

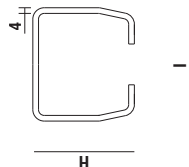


SERIA 1000 Poarta: G= 560 Kg / L max = 7 m



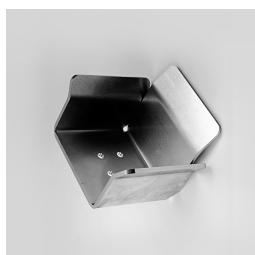
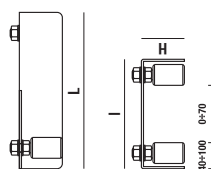
+ SINA ZINCATA
RANFORSATA

COD	P75MZ
Lungime / L	9 (m)
Inaltime / H	84
Latime / I	92



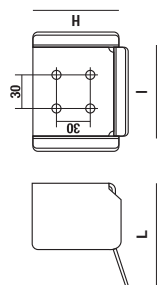
+ GHIDAJ SUPERIOR
REGLABIL

COD	222
Lungime / L	220
Inaltime / H	60
Latime / I	150



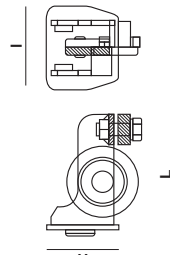
+ OPRITOR
CAPAT CURSA

COD	1030
Lungime / L	126
Inaltime / H	120
Latime / I	131



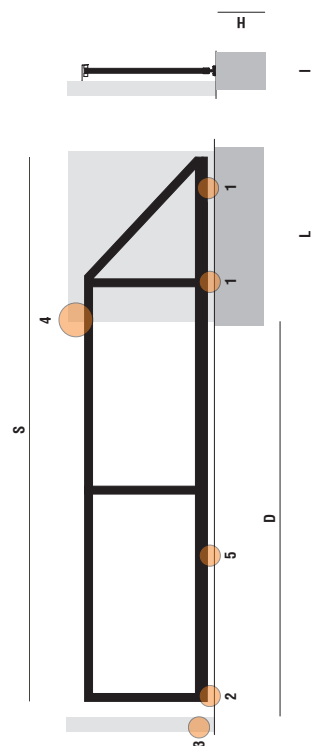
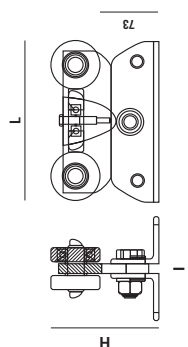
+ RULMENT
CAPAT SINA

COD	1020
Lungime / L	125
Inaltime / H	104
Latime / I	92



+ SISTEM
ROLE

COD	1010
Lungime / L	235
Inaltime / H	157
Latime / I	155



LEGENDA

- L x H x I : Dimensiuni fundatie
D : Deschidere poarta
1 : Sistem cu 5 role transport
2 : Rulment capat sina
3 : Opritor capat cursa
4 : Ghidaj superior reglabil
5 : Sina zincata ranforsata

FUNDATIE (m)

D	S	Lungime (L)	Adancime (H)	Latime (I)
6	9	3.5	0.9	0.5
7	10	3.5	0.9	0.5