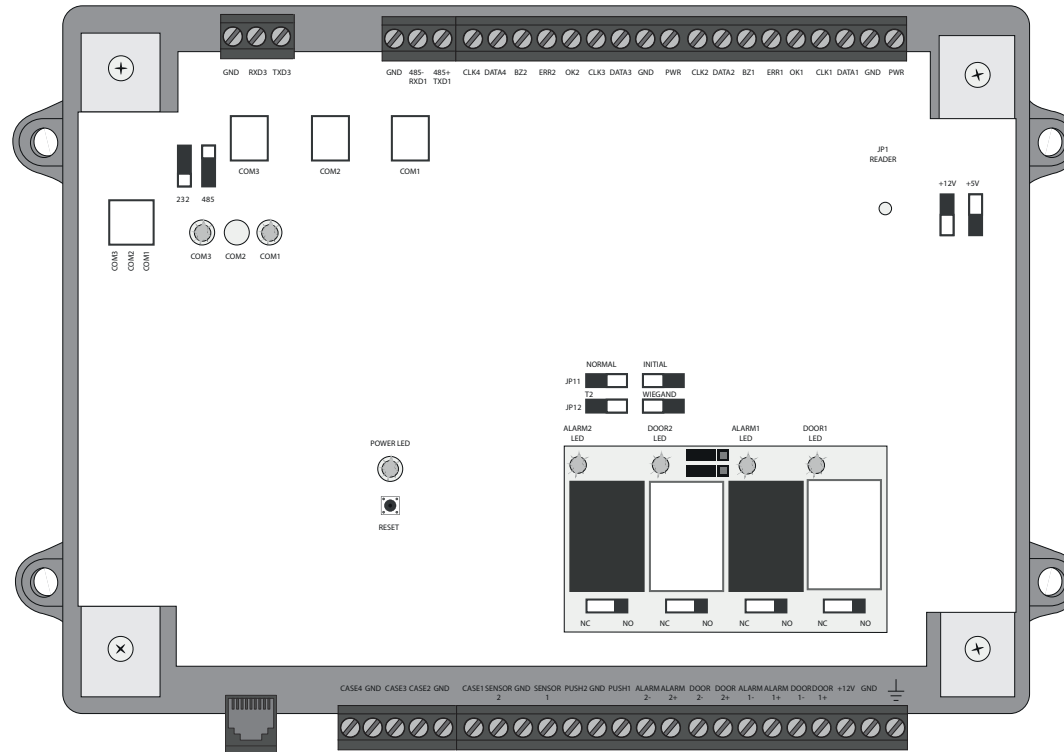




# MRAC2000WSN

## USER'S AND INSTALER'S MANUAL








# 00. CONTENT

## INDEX

<b>01. SAFETY INSTRUCTUONS</b>	<b>1B</b>
<b>02. THE PRODUCT</b>	
MRAC200WSN	4A
TECHNICAL CHARACTERISTICS	4A
CONTROL BOARD	4B
CONNECTORS DESCRIPTION	5A
<b>03. OPERATING SCHEME</b>	
SYSTEM SETUP	6A
<b>04. INSTALLATION</b>	
CONTROL BOARD INSTALLATION	6B
<b>05. CONNECTION SCHEME</b>	
CONNECTION OF RS 485 READERS	7A
CONNECTION OF ELECTRICAL LOCK AND ELECTROMAGNETIC LOCK	7B
CONNECTION OF PERIPHERALS	8A
<b>06. CONFIGURATION</b>	
RELAY MODE	8B
CONTROL BOARD TEST	8B
<b>07. SOFTWARE</b>	
SYSTEM OPERATION SUPPORTED BY SOFTWARE	9A
SOFTWARE INSTALLATION AND CONFIGURATION	9A
SET NETWORK IP TO USE	9A
ADD MRAC IN SOFTWARE	9B
ADD USER PER MIFARE CARD	10B
ADD USER BY PIN	11A
SET TIMES	11A
ASSIGN AUTHORIZATIONS	11B
TESTING AUTHORIZATIONS	12B
<b>08. TROUBLESHOOTING</b>	
INSTRUCTIONS FOR FINAL CONSUMERS / SPECIALIZED TECHNICIANS	13

# 01. SAFETY INSTRUCTIONS

## ATTENTION:

	This product is certified in accordance with European Community (EC) safety standards.
	This product complies with Directive 2011/65/EU of the European Parliament and of the Council, of 8 June 2011, on the restriction of the use of certain hazardous substances in electrical and electronic equipment and with Delegated Directive (EU) 2015/863 from Commission.
	(Applicable in countries with recycling systems). This marking on the product or literature indicates that the product and electronic accessories (eg. Charger, USB cable, electronic material, controls, etc.) should not be disposed of as other household waste at the end of its useful life. To avoid possible harm to the environment or human health resulting from the uncontrolled disposal of waste, separate these items from other types of waste and recycle them responsibly to promote the sustainable reuse of material resources. Home users should contact the dealer where they purchased this product or the National Environment Agency for details on where and how they can take these items for environmentally safe recycling. Business users should contact their vendor and check the terms and conditions of the purchase agreement. This product and its electronic accessories should not be mixed with other commercial waste.
	
	This marking indicates that the product and electronic accessories (eg. charger, USB cable, electronic material, controls, etc.) are susceptible to electric shock by direct or indirect contact with electricity. Be cautious when handling the product and observe all safety procedures in this manual.

# 01. SAFETY INSTRUCTIONS

## **GENERAL WARNINGS**

- This manual contains very important safety and usage information. very important. Read all instructions carefully before beginning the installation/usage procedures and keep this manual in a safe place that it can be consulted whenever necessary.
- This product is intended for use only as described in this manual. Any other enforcement or operation that is not mentioned is expressly prohibited, as it may damage the product and put people at risk causing serious injuries.
- This manual is intended firstly for specialized technicians, and does not invalidate the user's responsibility to read the "User Norms" section in order to ensure the correct functioning of the product.
- The installation and repair of this product may be done by qualified and specialized technicians, to assure every procedure are carried out in accordance with applicable rules and norms. Nonprofessional and inexperienced users are expressly prohibited of taking any action, unless explicitly requested by specialized technicians to do so.
- Installations must be frequently inspected for unbalance and the wear signals of the cables, springs, hinges, wheels, supports and other mechanical assembly parts.
- Do not use the product if it is necessary repair or adjustment is required.
- When performing maintenance, cleaning and replacement of parts, the product must be disconnected from power supply. Also including any operation that requires opening the product cover.
- The use, cleaning and maintenance of this product may be carried out by any persons aged eight years old and over and persons whose physical, sensorial or mental capacities are lower, or by persons without any knowledge of the product, provided that these are supervision and instructions given by persons with experienced in terms of usage of the product in a safe manner and who understands the risks and dangers involved.

- Children shouldn't play with the product or opening devices to avoid the motorized door or gate from being triggered involuntarily.

## **WARNINGS FOR TECHNICIANS**

- Before beginning the installation procedures, make sure that you have all the devices and materials necessary to complete the installation of the product.
- You should note your Protection Index (IP) and operating temperature to ensure that is suitable for the installation site.
- Provide the manual of the product to the user and let them know how to handle it in an emergency.
- If the automatism is installed on a gate with a pedestrian door, a door locking mechanism must be installed while the gate is in motion.
- Do not install the product "upside down" or supported by elements do not support its weight. If necessary, add brackets at strategic points to ensure the safety of the automatism.
- Do not install the product in explosive site.
- Safety devices must protect the possible crushing, cutting, transport and danger areas of the motorized door or gate.
- Verify that the elements to be automated (gates, door, windows, blinds, etc.) are in perfect function, aligned and level. Also verify if the necessary mechanical stops are in the appropriate places.
- The central must be installed on a safe place of any fluid (rain, moisture, etc.), dust and pests.
- You must route the various electrical cables through protective tubes, to protect them against mechanical exertions, essentially on the power supply cable. Please note that all the cables must enter the central from the bottom.
- If the automatism is to be installed at a height of more than 2,5m from the ground or other level of access, the minimum safety and health requirements for the use of work equipment workers at the work of Directive 2009/104/CE of European Parliament and of the Council of 16

# 01. SAFETY INSTRUCTIONS

September 2009.

- Attach the permanent label for the manual release as close as possible to the release mechanism.
- Disconnect means, such as a switch or circuit breaker on the electrical panel, must be provided on the product's fixed power supply leads in accordance with the installation rules.
- If the product to be installed requires power supply of 230Vac or 110Vac, ensure that connection is to an electrical panel with ground connection.
- The product is only powered by low voltage safety with central (only at 24V motors)

## WARNINGS FOR USERS

- Keep this manual in a safe place to be consulted whenever necessary.
  - If the product has contact with fluids without being prepared, it must immediately disconnect from the power supply to avoid short circuits, and consult a specialized technician.
  - Ensure that technician has provided you the product manual and informed you how to handle the product in an emergency.
  - If the system requires any repair or modification, unlock the automatism, turn off the power and do not use it until all safety conditions have been met.
  - In the event of tripping of circuits breakers or fuse failure, locate the malfunction and solve it before resetting the circuit breaker or replacing the fuse. If the malfunction is not repairable by consult this manual, contact a technician.
  - Keep the operation area of the motorized gate free while the gate in motion, and do not create strength to the gate movement.
- Do not perform any operation on mechanical elements or hinges if the product is in motion.

## RESPONSABILITY

- Supplier disclaims any liability if:
  - Product failure or deformation result from improper installation use or maintenance!
  - Safety norms are not followed in the installation, use and maintenance of the product.
  - Instructions in this manual are not followed.
  - Damaged is caused by unauthorized modifications
  - In these cases, the warranty is voided.

## SYMBOLS LEGEND:



• Important safety notices



• Useful information



• Programming information



• Potentiometer information



• Connectors information



• Buttons information

## 02. THE PRODUCT

### MRAC2000WSN



The MRAC2000WSN is a control board for access control of a given location.

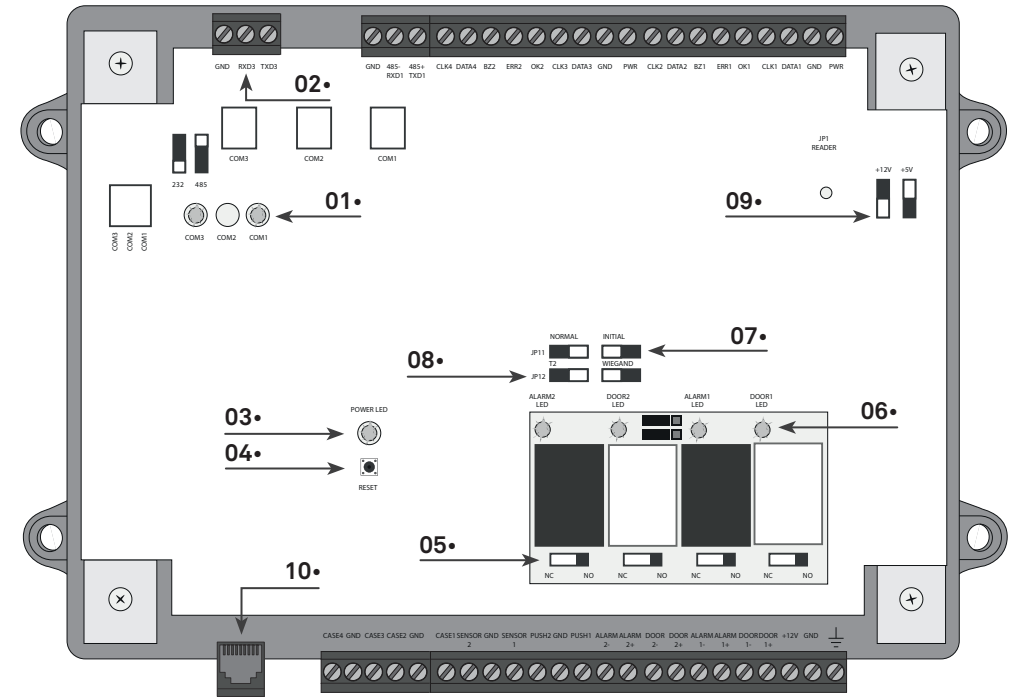
- Its characteristics are:
- Connect up to 4 Wiegand or RS 485 readers;
- Alarm card/code configuration;
- 128 time zones;
- 8 conditional schedules to unlock doors;
- Possibility of setting vacation schedules;
- Five input modes: [Card & Code], [Card], [Code], [Bluetooth] and [NFC];
- Blacklist to avoid unknown use of lost cards;
- Anti-Passback Function;
- Full control by Motorline software;
- Supports several actuators for alarm (example: door does not close, force open and reader broken);
- Possibility of communication with M-ACCESS MOTORLINE software in passive and active state.

### TECHNICAL CHARACTERISTICS

• Power Supply	12 Vdc
• Inputs	8 sensors [door sensor (2), exit button (2), reserved (4)]
• Outputs	4 relays [door control (2), alarm (2)]
• Cards	15000 max.
• Passage records	37000
• Diagnostic LEDs	Connection, State and Communication
• Internal clock	Yes
• Supported readers	4xWiegand or 4xRS485
• Consumption	500mA
• Communication with the software	TCP/IP
• Transmission rate	10/100 Mbps
• Operating temperature	-40°C ~ 70°C
• Operating humidity	20% ~ 80%
• Dimension	150 x 210 x 29mm

## 02. THE PRODUCT

### CONTROL BOARD

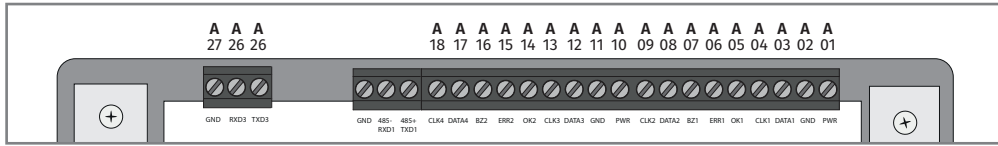


#### Main components:

- 01 • Communication status LED
- 02 • COM3 - Communication with 4xRS485 readers
- 03 • On indicator LED
- 04 • RESET button
- 05 • Relay NO/NC state selector
- 06 • Relay status indicator
- 07 • Factory reset or normal operating mode
- 08 • T2 Reader or Wiegand Reader
- 09 • Output selection for readers (5V or 12V)
- 10 • LAN Network Communication Port

## 02. THE PRODUCT

### CONNECTORS DESCRIPTION



Door 1 Reader	A1 •	PRW	Power for readers (12V or 5V)
	A2 •	GND	Power for readers (GND)
	A3 •	DATA1/W1	Reader 1 data (DATE 1)
	A4 •	CLK1/W0	Reader 1 data (CLOCK 1)
	A5 •	OK1	Reader LED output for valid card
	A6 •	ERR1	Reader LED output for invalid card
	A7 •	BZ1	Reader Alarm Output
	A8 •	DATA2/W1	Reader 2 data (DATA 2)
	A9 •	CLK2/W0	Reader 2 data (CLOCK 2)
Door 2 Reader	A1 •	PRW	Power for readers (12V or 5V)
	A2 •	GND	Power for readers (GND)
	A12 •	DATA1/W1	Reader 3 data (DATA 3)
	A13 •	CLK1/W0	Reader 3 data (CLOCK 3)
	A14 •	OK1	Reader LED output for valid card
	A15 •	ERR1	Reader LED output for invalid card
	A16 •	BZ1	Reader Alarm Output
	A17 •	DATA2/W1	Reader 4 data (DATA 4)
	A18 •	CLK2/W0	Reader 4 data (CLOCK 4)
RS 485 Connection	A25 •	TXD3	RS485+ reader input (Yellow)
	A26 •	RXD3	RS485- reader input (Blue)
	A27 •	GND	Negative (GND)

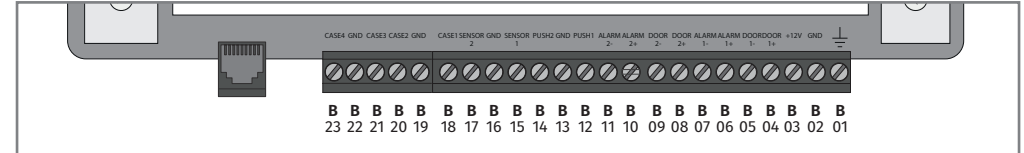
#### Notes:

- Provide a separate power supply to prevent power degradation due to long transmission distance and ensure normal reader operation;
- Use a DC switched power supply to power the reader;
- Add an insulator of adequate thickness on the back of the reader if you want to install it on a metallic object to avoid interference;
- The distance between 2 readers must be 1.5 times greater than the reading range to avoid radio frequency interference between them;

## 02. THE PRODUCT

### CONNECTORS DESCRIPTION

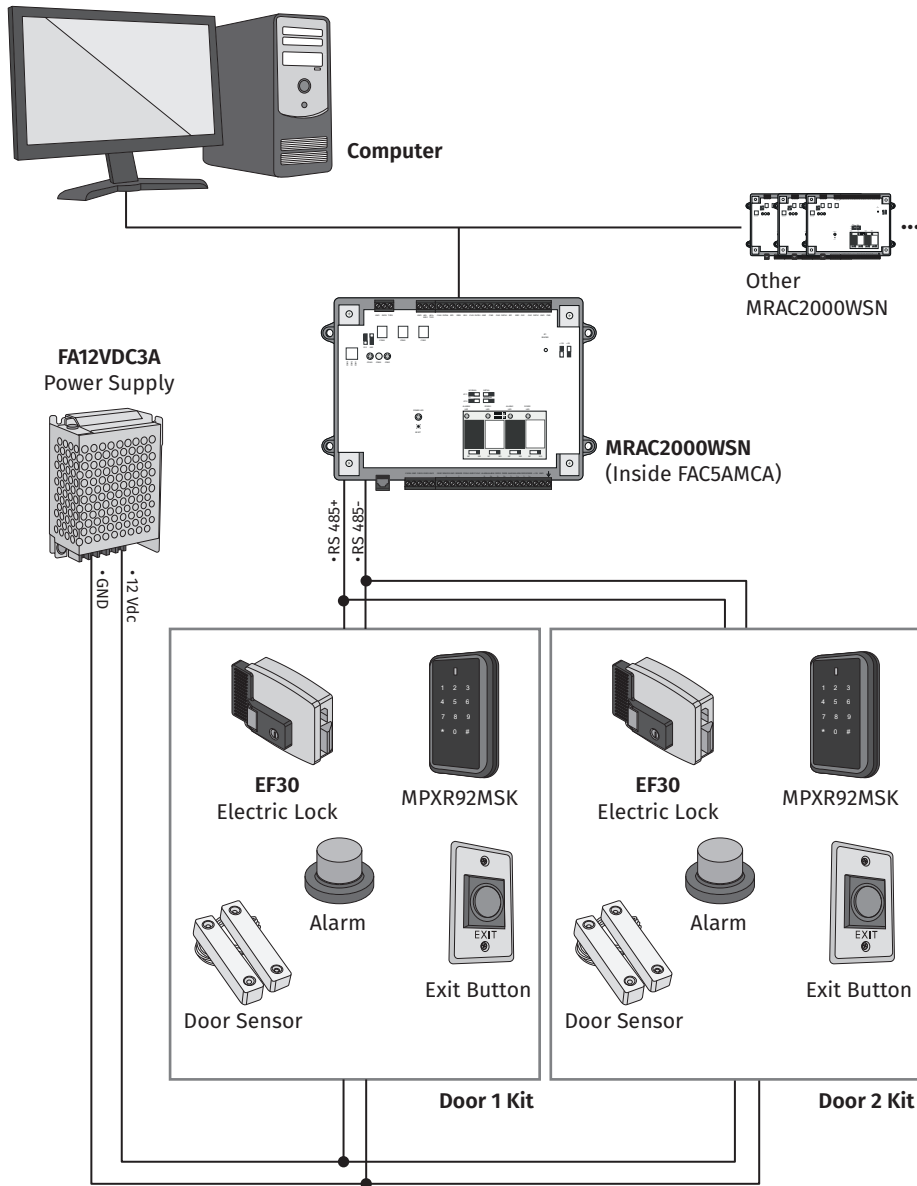
- TXD3 and RXD3 are designed for MRAC2000WSN compatible readers; Use 22AWG wire with insulation;
- Reader IDs 1 and 2 are for Port 1 (input/output) and Reader IDs 3 and 4 are for Port 2 (input/output).



Power Supply	B1 •	FG	Ground wire
	B2 •	GND	Power input (GND)
	B3 •	+12V	Power input (12V)
	B4 •	DOOR1+	Relay Output - Door 1 (NO/NC)
	B5 •	DOOR1-	COM
	B6 •	ALARM1+	Relay Output - Door 1 Alarm (NO/NC)
	B7 •	ALARM1-	COM
	B8 •	DOOR2+	Relay Output - Door 2 (NO/NC)
	B9 •	DOOR2-	COM
	B10 •	ALARM2+	Relay Output - Door 2 Alarm (NO/NC)
	B11 •	ALARM2-	COM
	B12 •	PUSH1	Exit button input - Door 1
	B13 •	COM	Common Line (COM)
	B14 •	PUSH2	Exit button input - Door 2
	B15 •	SENSOR1	Sensor input - Door 1
	B16 •	COM	Common Line (COM)
	B17 •	SENSOR2	Sensor input - Door 2
	B18 •	CASE1	Input of reader security sensor
	B19 •	COM	Common Line (COM)
	B20 •	CASE2	Input of reader security sensor
	B21 •	CASE3	Input of reader security sensor
	B22 •	COM	Common Line (COM)
	B23 •	CASE4	Input of reader security sensor

## 03. OPERATING SCHEME

### SYSTEM SETUP



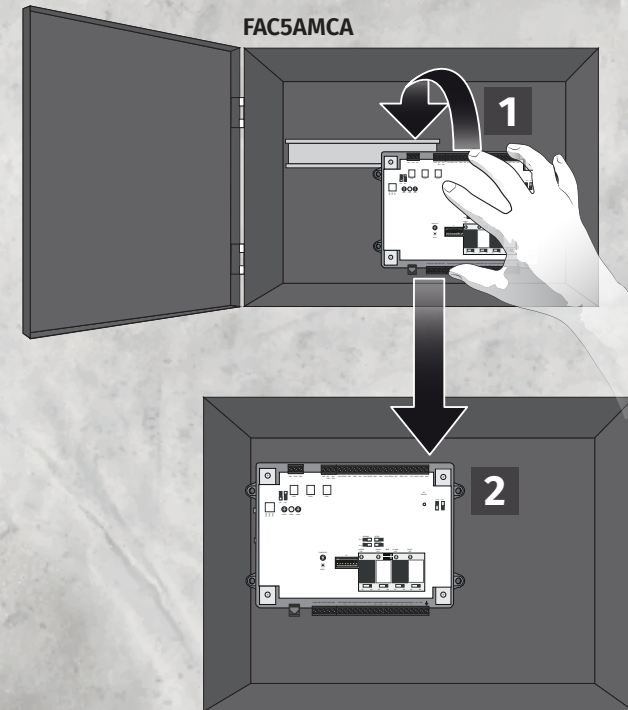
## 04. INSTALLATION

### CONTROL BOARD INSTALLATION



To install the control board, proceed with the following steps:

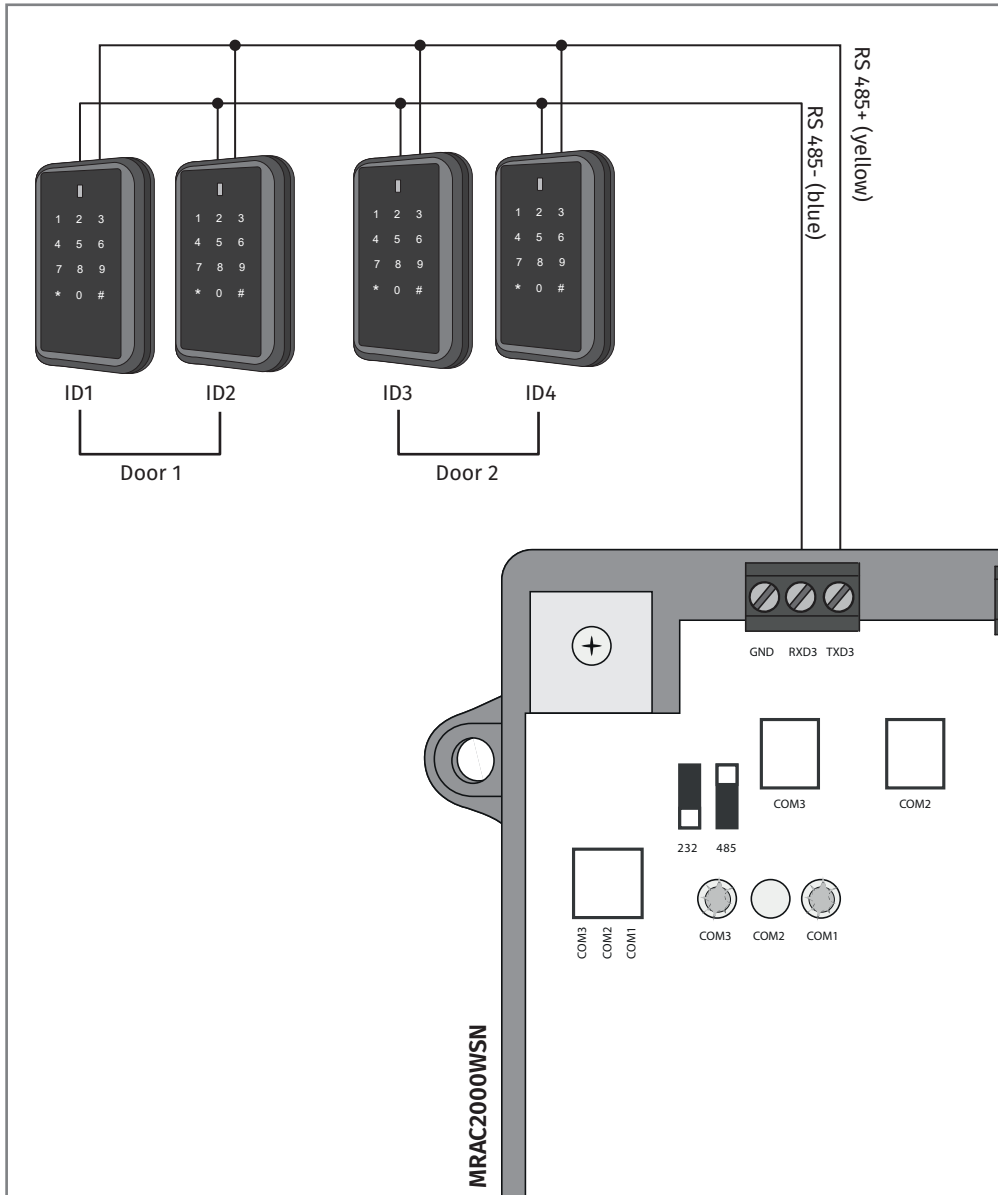
- 1 Position the control board triggers on guide fittings.
- 2 Press so that the control board snaps into the guide.



# 05. CONNECTION SCHEME

## CONNECTION OF RS 485 READERS

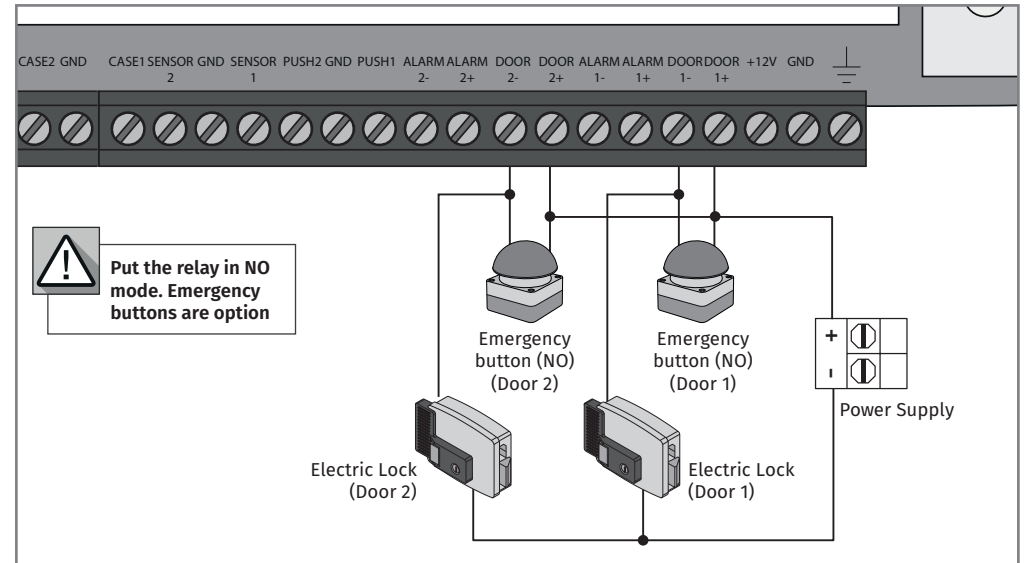
- The maximum distance between a controller and the last reader cannot exceed 1200m.



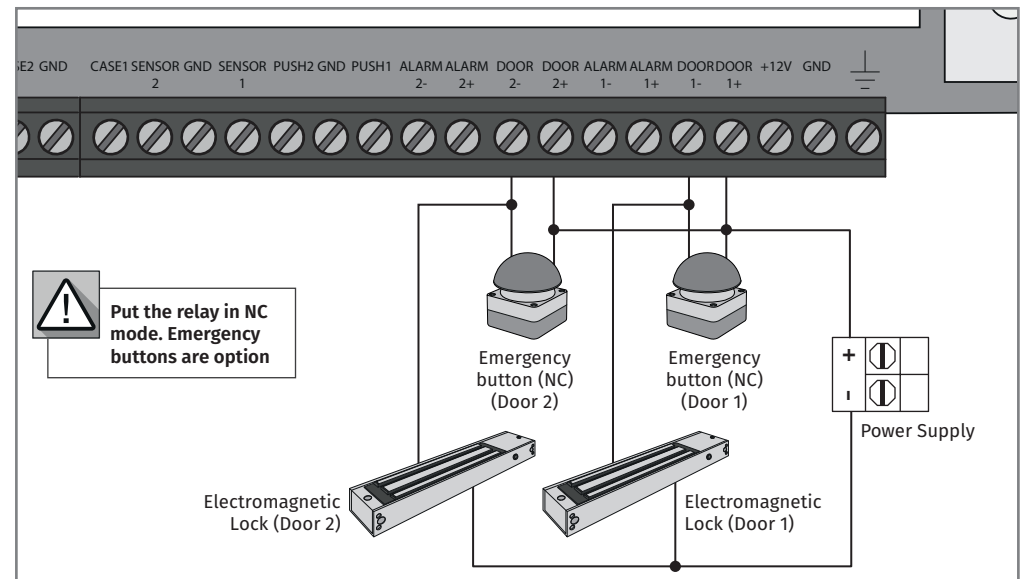
# 05. CONNECTION SCHEME

## CONNECTION OF ELECTRICAL LOCK AND ELECTROMAGNETIC LOCK

### ELECTRIC LOCK (NO)



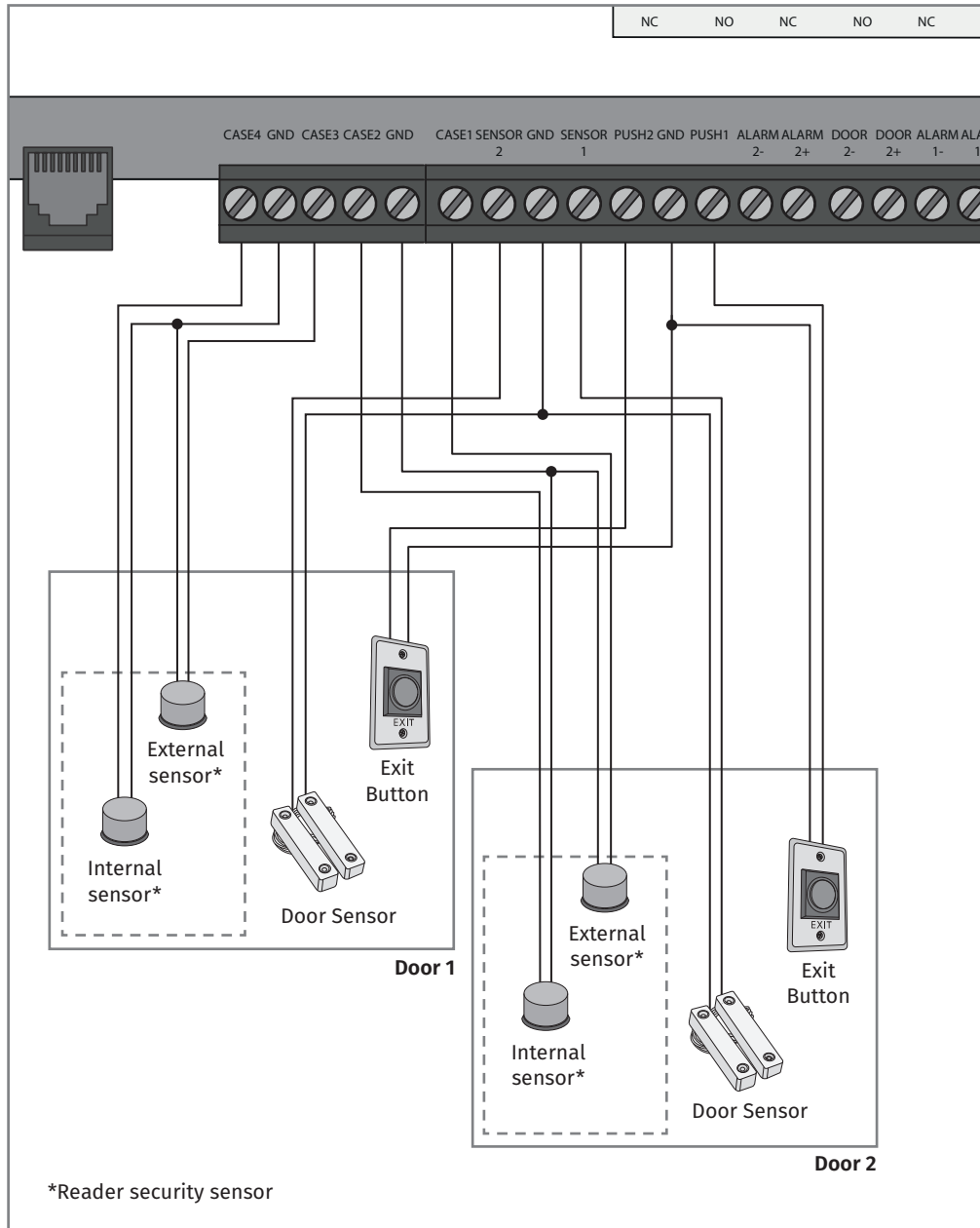
### ELECTROMAGNETIC LOCK (NC)





# 05. CONNECTION SCHEME

## CONNECTION OF PERIPHERALS

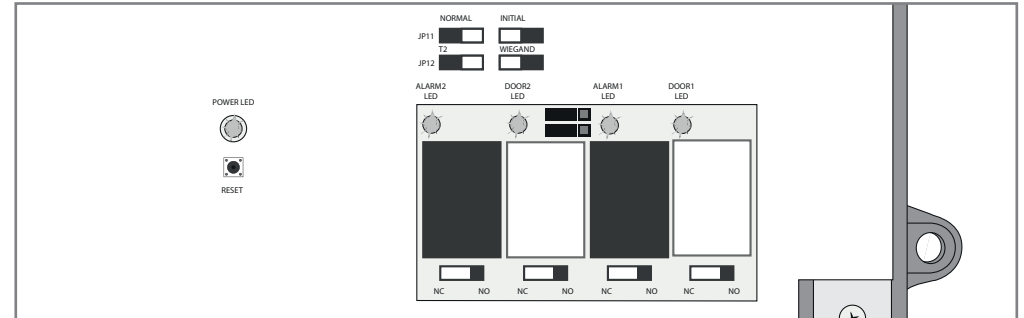


# 06. CONFIGURATION

## RELAY MODE

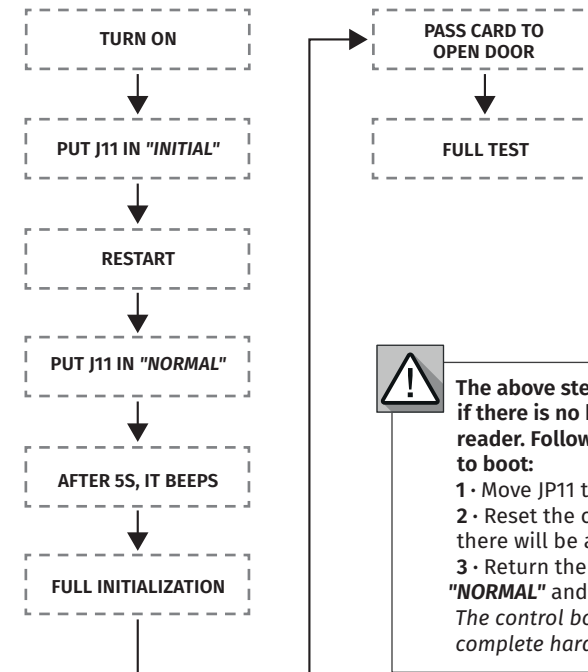
For relay mode you can configure according to:

- "NO" for electrical screw lock connection and Alarm output.
- "NC" for the connection of electrical faults and Electromagnetic Lock.



## CONTROL BOARD TEST

- The controller will beep after 2s and LED 4 will start flashing.
- The controller will emit a continuous beep.

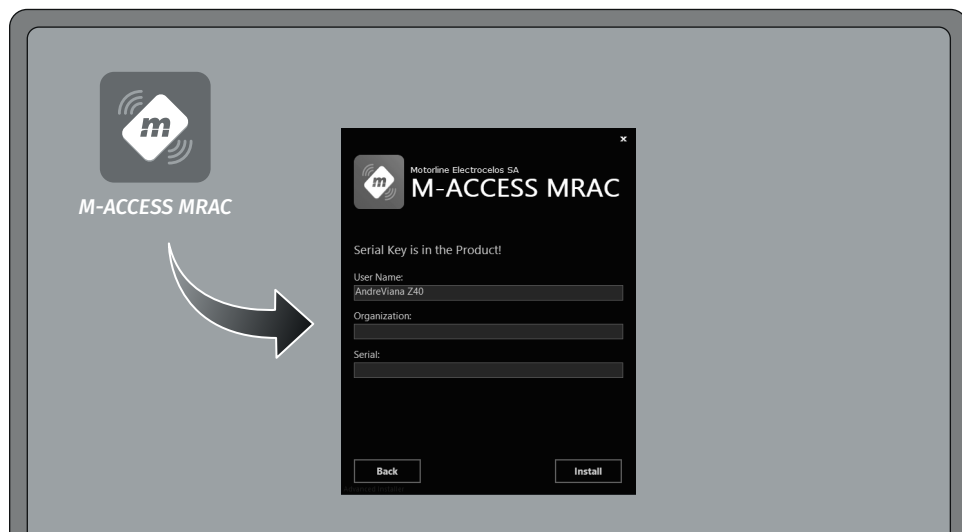


## 07. SOFTWARE

### SYSTEM OPERATION SUPPORTED BY SOFTWARE

OPERATING SYSTEM: *Windows 7* or higher

### SOFTWARE INSTALLATION AND CONFIGURATION



- 01 • Download the **M-ACCESS** software from [motorline.pt](http://motorline.pt). Run the "setup.exe" application.
- 02 • Open the application icon on the desktop to start **M-ACCESS** and configure it:
  - Select Language
  - Set a Username
  - Define a name for the Organization
  - Enter Serial Number



You can find the *Serial Number* on the product.

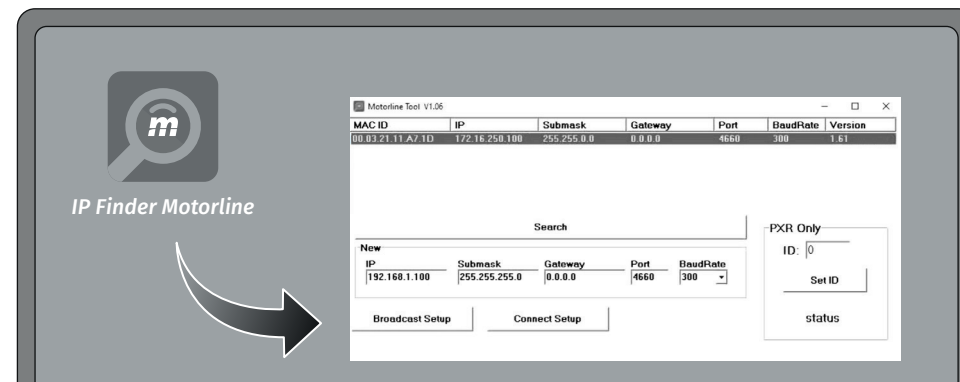
### SET NETWORK IP TO USE

01 • In the "IP Protocol Properties", set the **IP Address** you want to use on your system, as well as the Subnet Mask and save the changes made.

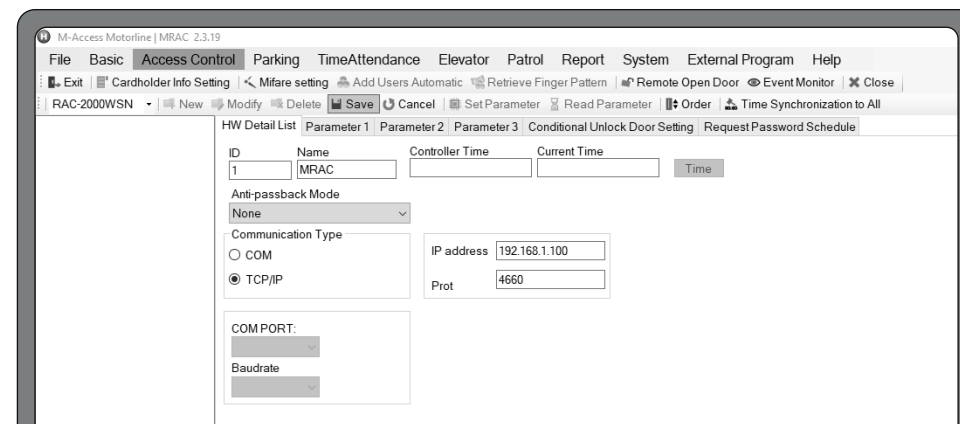
Path: **Control Panel\Network and Internet\Network and Sharing Center\Ethernet\Properties**

## 07. SOFTWARE

### ADD MRAC IN SOFTWARE



- 01 • Start the Motorline IP Tool software and search for the MRAC connected to your computer [**Search** Button].
- 02 • Select the MRAC device and change the **IP Address** and **Subnetmask** to the values you set in **SET NETWORK IP TO USE**. Confirm the [**Broadcast Setup** Button] operation.



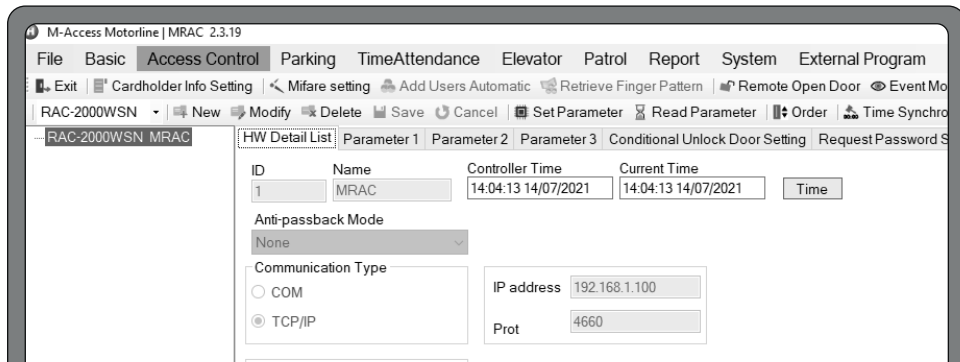
- 03 • Return to the **M-ACCESS** software and log in: **User: USER | Password: USER**.
- 04 • In the "Hardware Settings" window add the new MRAC device [**New** Button].  
Path: **Access Control/M-RAC2000/Hardware Settings**
- 05 • Atribua um ID e Nome à central e digite o IP definido anteriormente.



In the field Port enter the value **4660**.

# 07. SOFTWARE

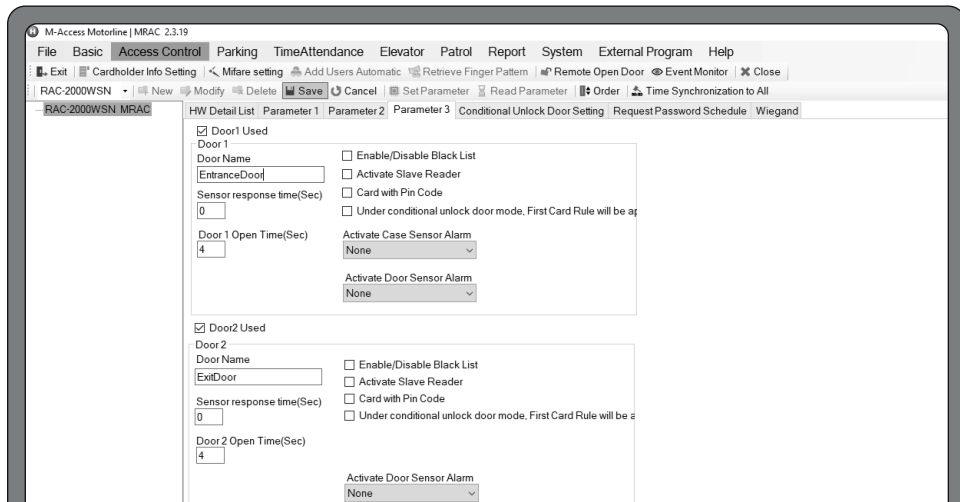
## ADD MRAC IN SOFTWARE



- 06 • Synchronize the time [Time Button] to test your communication with the MRAC device. If communication is established, the time fields will be automatically filled.
- 07 • Once the communication between computer and MRAC has been tested, you can save the settings [Save Button].



If there is a communication failure, check if the entered IP matches the previously defined IP.



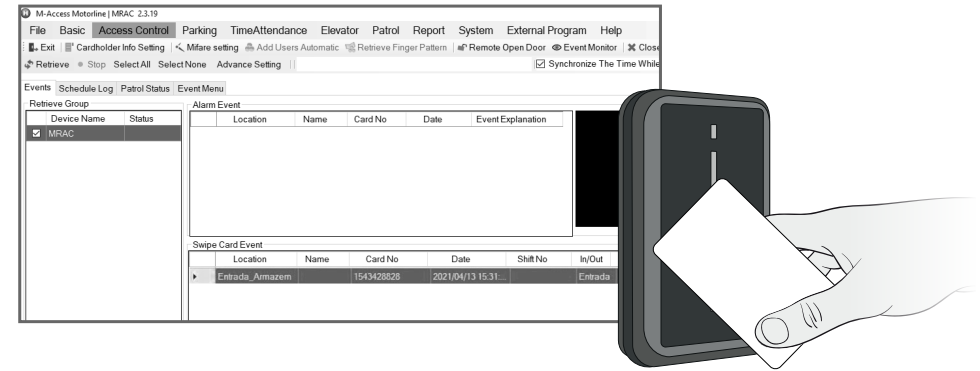
- 08 • Activate the edit mode [Modify Button] and in "Parameter 3", activate the required doors and assign a name to each of them. Save the changes [Save Button].

# 07. SOFTWARE

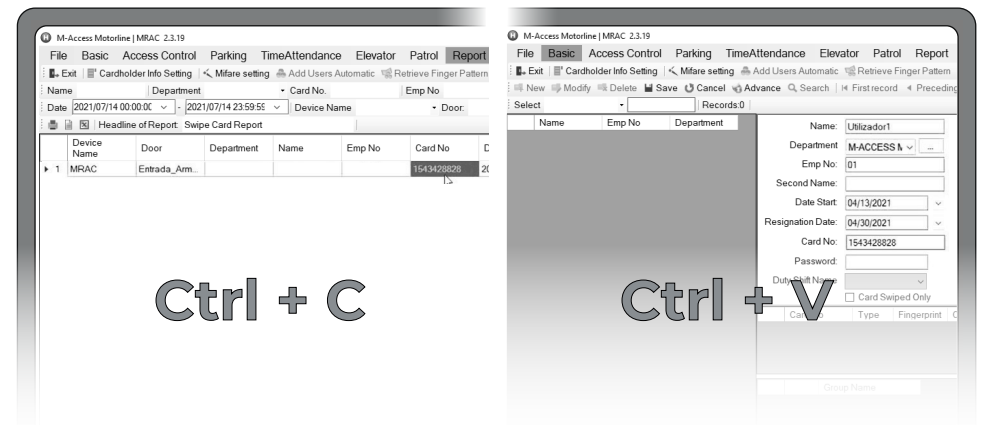
## ADD USER PER MIFARE CARD



The following steps demonstrate how to add a MIFARE Card User without resorting to a mass card recording device such as the MIM1100U.



- 01 • In the "EventMonitor" window, click [Retrieve] to start monitoring a card in real time.  
Path: **Access Control/EventMonitor**
- 02 • Swipe the card into a card reader device connected to the pc and check its registration in the software.



- 03 • In the "History Report" window click [Search], select the MIFARE card record and copy the card number (Ctrl + C).  
Path: **Report/History Report**
- 04 • In "Cardholder Info Settings" click on [New] to create the card record and in the "Card No." field paste the previously copied card number (Ctrl + V).

## 07. SOFTWARE

### ADD USER BY PIN

M-Access Motorline | MRAC 2.3.19

File Basic Access Control Parking TimeAttendance Elevator Patrol Report System External Program Help

Exit Cardholder Info Setting Mifare setting Add Users Automatic Retrieve Finger Pattern Remote Open Door Event Monitor Close

New Modify Delete Save Cancel Advance Search Firstrecord Preceding Next Lastrecord Update Apply to use mCardAc

Select Records:0

Name	Emp No	Department
Utilizador1	01	M-ACCESS...

Name: Utilizador2  
 Department: M-ACCESS  
 Emp No: 02  
 Second Name:  
 Date Start:  
 Resignation Date:  
 Card No: 2478  
 Password:  
 Duty Shift Name:  
 Card Swiped Only

Photo Setting  
Photo Delete

Card No Type Fingerprint Card Type Card Group Add

01 • In "Cardholder Info Setting" click [New] to create a new record and in the "Card No." field enter the desired PIN.

### SET TIMES

M-Access Motorline | MRAC 2.3.19

File Basic Access Control Parking TimeAttendance Elevator Patrol Report System External Program Help

Exit Cardholder Info Setting Mifare setting Add Users Automatic Retrieve Finger Pattern Remote Open Door Event Monitor Close

New Modify Access Control Time Schedule Setting

Periodic Setting Holiday Setting Conditional Unlock Door

Name

Time Zone Setting

No	Start Time	End Time
0	00:00	23:59
1	00:00	00:00
2	08:00	18:00
3		
4		
5		
6		
7		

Time Schedule Setting

No	Description	Mon	Tue	Wed	Thu	Fri	Sat	Sun	Universal Holiday Setting
0	turno_diano	2	2	2	2	2	2	0	0
1	2	0	0	0	0	0	0	0	0
2	3	0	0	0	0	0	0	0	0
3	4	0	0	0	0	0	0	0	0
4	5	0	0	0	0	0	0	0	0
5	6	0	0	0	0	0	0	0	0
6	7	0	0	0	0	0	0	0	0

01 • To set a new schedule enter "Periodic Setting".

Path: **Access Control/M-RAC2000/Periodic Setting**

02 • In the column "Time Zone Setting" click [Modify Button] to add a new schedule.

03 • In the column "Time Schedule Setting", create a timetable and assign the ID related to the range of hours you want for each day of the week. Save the changes [Save Button].



If you do not want to define a new schedule, you can use the **free schedules predefined in IDs 0 and 1.**

## 07. SOFTWARE

### ASSIGN AUTHORIZATIONS

M-Access Motorline | MRAC 2.3.19

File Basic Access Control Parking TimeAttendance Elevator Patrol Report System External Program Help

Exit Cardholder Info Setting Mifare setting Add Users Automatic Retrieve Finger Pattern Remote Open Door Event Monitor Close

Group Auth Setting Group Auth Inquire Download

New Modify Delete

Group Name	Holiday	Time Schedule
diary	<input checked="" type="checkbox"/>	<input checked="" type="checkbox"/>

Authorization Setting

Door Schedule Cardholder Delete Cardholder Export Cardholder Import

Total No:0

Door	Time Schedule[1]	Time Schedule[2]	Department	Emp No

01 • Go to "Group Auth Setting", create a new group of authorizations [New Button] and define the type of use that this group will have (Holiday or Time Schedule).

Path: **Access Control/M-RAC2000/Authorization Setup**



If the Group Auth Setting is intended for regular and non-sporadic use, deselect the **Holiday** option.

Authorization Setting

Select Door Group Schedule

OK Cancel

Set  Reverse Select

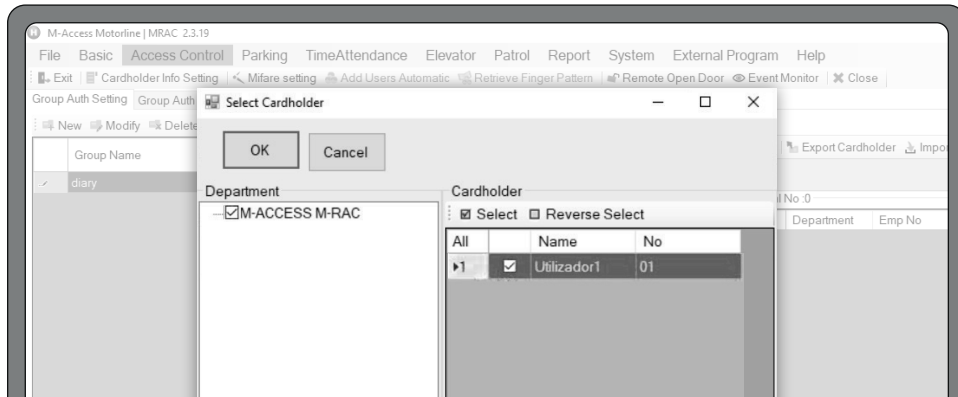
Time Schedule	Door	Time Schedule[1]	Time Schedule[2]	Time Schedule[3]	Time Schedule[4]	Time Schedule[5]
turno_diano	EntryDoor					
2	ExtDoor					
3						
4						
5						
6						
7						
8						
9						

02 • Click [Time Schedule] to assign the previously set schedule to the desired doors.

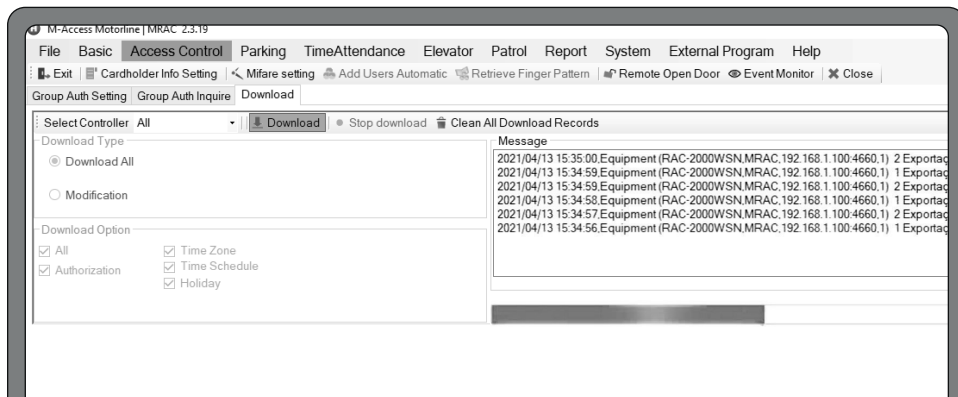
03 • Select the desired door and assign the schedule [Set Button]. Save changes [OK button].

## 07. SOFTWARE

### ASSIGN AUTHORIZATIONS



- 04 • Click [Cardholder] to give authorization to the intended Users.
- 05 • In the "Department" window select the device **MRAC2000WSN** and select the Users you want to authorize. Save changes [OK button].



- 06 • In the "Download" window, select the "Download All" field and then click [Download] to copy all changes made to the **MRAC2000WSN** device.  
Path: **Access Control/M-RAC2000/Download**

## 07. SOFTWARE

### TESTING AUTHORIZATIONS

To test the assigned authorizations:

- 01 • In the "Access Control" window and select [EventMonitor].
- 02 • Click [Retrieve] to enable **MRAC2000WSN** Monitoring.
- 03 • Swipe the registered card into the reader and see the feedback presented in the table.



If the registration is carried out correctly, the message in the table will display **Guaranteed Access** confirming the successful registration of the card.

## 08. TROUBLESHOOTING

### INSTRUCTIONS FOR FINAL CONSUMERS / SPECIALIZED TECHNICIANS

PROBLEM	SOLUTION
The control board power indicator LED does not flash.	<ul style="list-style-type: none"> <li>• Check if the 12V power is connected to the power supply.</li> <li>• Check whether the power polarity is correct and whether the power input is sufficient or not.</li> </ul>
The door does not open after swiping the card	<ul style="list-style-type: none"> <li>• Check if the reader wire connection and reader interface setting is correct.</li> <li>• Make sure you set the authorization and the card number is correct.</li> <li>• Check the connection of the MRAC with the lock.</li> <li>• Make sure the reader ID is correct.</li> </ul>
The reader beeps once after swiping the card. There is no other sound.	<ul style="list-style-type: none"> <li>• Make sure the reader ID is correct.</li> <li>• Reset the control board button and try to retrieve the connection.</li> </ul>
Occasionally it is not possible to access the door	<ul style="list-style-type: none"> <li>• Make sure the access authorization setting is correct.</li> <li>• Upload the authorization for the control board again.</li> </ul>
The door does not open after pressing the exit button.	<ul style="list-style-type: none"> <li>• Make sure the installed output button and wire connection are correctly connected.</li> <li>• Make sure the electric door lock wire connection is correctly connected.</li> </ul>
The door usually opens, but locks after swiping the card.	<ul style="list-style-type: none"> <li>• Wrong door relay activation mode. Adjust the jumpers and select the proper relay mode.</li> </ul>
The card is read in the door 1 reader, but it is door 2 that opens.	<ul style="list-style-type: none"> <li>• Check the wire connection of door relay.</li> <li>• Wrong reader ID setting. ID reader 1 (Exterior) and 2 (Interior) is for port 1, ID reader 3 (Exterior) and 4 (Interior) is for port 2.</li> </ul>
The reader's reading range is too short.	<ul style="list-style-type: none"> <li>• It is recommended to use separate linear direct current (do not switch power)</li> <li>• If the reader is installed on a metallic object, add a plastic spacer of suitable thickness on the back of the reader to insulate and avoid interference.</li> <li>• The distance between two readers should be 1.5 times greater than the reading range to avoid radio frequency interference with each other.</li> <li>• If readers are installed on a thin wall, add a plastic spacer of suitable thickness on the back of the readers or change the installation location to insulate and avoid interference.</li> </ul>
Door open after swiping card twice.	<ul style="list-style-type: none"> <li>• The distance between the reader and the card is too long. Make sure the reader is not more than 1200mm away from the MRAC.</li> </ul>
The door opens too long or locks too quickly.	<ul style="list-style-type: none"> <li>• Use the software to adjust the door relay activation time.</li> </ul>
There is no alarm when external forces happen.	<ul style="list-style-type: none"> <li>• Please activate the door sensor and select the alarm type from the software.</li> <li>• Check that the door sensor location is sufficient and that the wire connection is correct.</li> <li>• Check if the alarm relay wire connection is correct.</li> </ul>
The control board does not communicate with the PC.	<ul style="list-style-type: none"> <li>• Make sure the Led LEN is blinking, if the Led doesn't blink, check if the internet wire is correctly connected.</li> <li>• Search for the IP with the MOTORLINE IP TOOL software.</li> <li>• Check that the IP and Subnet Mask values are the same on the Control Panel and on the MRAC device.</li> <li>• Make sure the Control Panel IP is fixed.</li> </ul>