

smanos®
Dream Big. Live Smart.

smanos®



KP-20 Security Keypad

EN

DE

FR

NL

ES

PT

IT

USER MANUAL

FCC STATEMENT

1. This device complies with Part 15 of the FCC Rules.

Operation is subject to the following two conditions:

- (1) This device may not cause harmful interference, and
- (2) This device must accept any interference received, including interference that may cause undesired operation.

2. Changes or modifications not expressly approved by the party responsible for compliance could void the user's authority to operate the equipment.

NOTE: This equipment has been tested and found to comply with the limits for a Class B digital, pursuant to Part 15 or the FCC Rules. These limits are designed to provide reasonable protection against harmful interference in a residential installation. This equipment generates, uses and can radiate radio frequency energy and, if not installed and used in accordance with the instructions, may cause harmful interference to radio communications. However, there is no guarantee that interference will not occur in a particular installation. If the equipment does cause harmful interference to radio or television reception, which can be determined by turning the equipment off and on, the user is encouraged to try to correct the interference by one or more of the following measures:

- Reorient or relocate the receiving antenna.
- Increase the separation between the equipment and receiver.
- Connect the equipment into an outlet on a circuit different from that to which the receiver is connected.
- Consult the dealer or an experienced radio/ TV technician for help.

Industry Canada Notice

This device complies with Industry Canada licence-exempt RSS standard(s).

1. Operation is subject to the following two conditions:

- (1) this device may not cause interference, and
 - (2) this device must accept any interference, including interference that may cause undesired operation of the device."
2. Changes or modifications not expressly approved by the party responsible for compliance could void the user's authority to operate the equipment.

Avis d'Industrie Canada

Le présent appareil est conforme aux CNR d'Industrie Canada applicables aux appareils radio exempts de licence. L'exploitation est autorisée aux deux conditions suivantes : (1) l'appareil ne doit pas produire de brouillage, et (2) l'utilisateur de l'appareil doit accepter tout brouillage radioélectrique subi, même si le brouillage est susceptible d'en compromettre le fonctionnement. Cet appareil numérique ne dépasse pas les Règlements sur l'interférence radio par un appareil numérique de classe B stipulés dans les Règlement sur l'interférence radio d'industrie Canada.

Introduction

This KP-20 Security Keypad is a wireless device with four non-numeric keys that can be used to Arm, Disarm or Home Arm K1 system .

Pairing to the K1 Hub

This Keypad needs to be paired (other than the KP-20 that is included with the K1 System Kit) to the K1 Hub first before use. To pair the Keypad, please refer to the K1 Hub's user manual or in the K1 section of the smanos home app, press the "+" button and follow the instructions on the Accessories page.

Product Overview

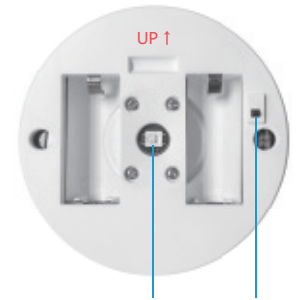
Front View

Rotatable Keypad Ring



LED Indicators
Four Non-numeric Keys *

Rear View



LED Indicator
Tampering Switch



Back Cover (Mounting Base)

LED Indication

Steady Red: System Armed

Steady Blue: System in Home Mode

Steady Green: System Disarmed

Blink once every 3 seconds: Low battery, please change the battery.

Tamper Switch

Anti-tampering protection ensures that any attempts to move the Keypad off the Back Cover results in an alarm and push notification.

Non-numeric Keys

Non-numeric Keys are used to set the password for changing the status of K1 system. The default password is shown as below and can be changed in app.



Press the key at the left top 6 times

How to Use After Pairing

Make sure the UP mark on the Back Cover points up before putting the Keypad on a flat surface.

Arm

Rotate the Keypad Ring to the right, and then enter the Keypad password (if you have not changed the default password, Press the left top key 6 times). The indicators will turn to Red.



Home Mode

Rotate the Keypad Ring to the right first, then to the left, and then enter the Keypad password (if you have not changed the default password, Press the left top key 6 times). The indicators will turn to Blue.



Disarm

Rotate the Keypad Ring to the left, and then enter the Keypad password (if you have not changed the default password, Press the left top key 6 times). The indicators will turn to Green.



Installation

Place the Keypad near the entrance of your home that is convenient for you to control the system on your way out/in.

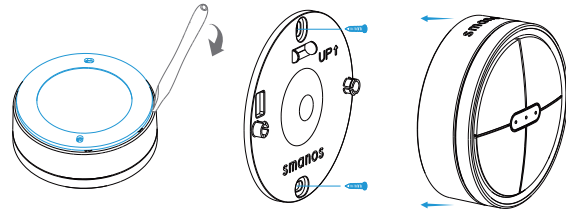
Set the K1 system to Test Mode, and then trigger the Keypad by pressing the Tampering Switch on the back of the Keypad



The K1 Hub will sound 3 beeps to confirm the connection and range with K1 Hub is good.

Start to install the Keypad with by supplied double-sided tape or screws.

Notice: Removing the Back Cover off of the KP-20 will result in an alarm; you can disarm the alarm and continue the installation.



Specifications

Model: KP-20

Power: 3V CR123A li-Mn battery x 2 pcs

Frequency: 915MHz (± 75 KHz)

Wireless range: ≤ 80 m (in open area)

Operating conditions:

0-50°C / 32° - 122°F, humidity < 90% RH (non-condensing)

Dimensions (L x W x H): 80 x 80 x 35.5mm / 3.15" x 3.15" x 1.34"