



DB7 Quick Installation with BlueEye application

Locating the DB7

Mount the DB7 near the door to be monitored. Use the angle bracket (purchased separately) if needed to better supervise the area.

Powering the DB7

ALLOW 8 hours of charging before full function may be available

Connect the two power wires (recommend 18 gauge up to 30 meters) to the DB7. A wide power supply voltage range can be used (12-24 volts AC or DC, minimum 10W power supply). The DB7 must be able to consume 500 mA and 10 volts at the DB7 connection terminals over the supplied wires. Make sure the wires and length support this power. Connecting to Aux bus wires of the alarm system may not be able to supply the current needed, especially 21-gauge wires or enough Aux reserve.

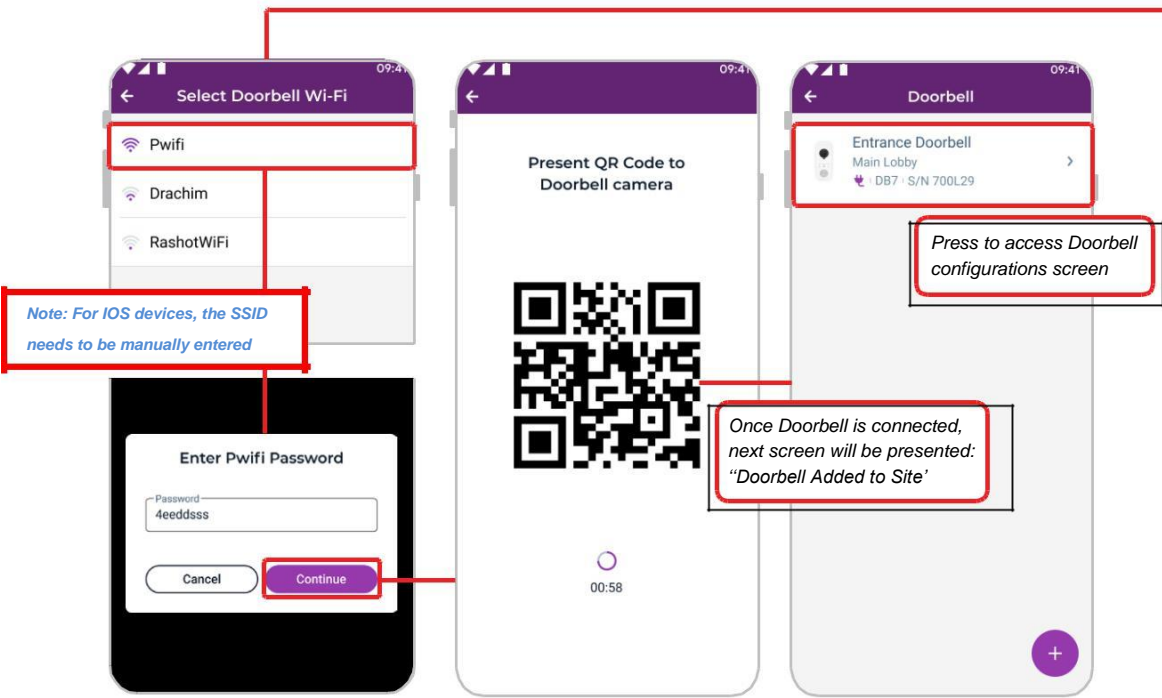
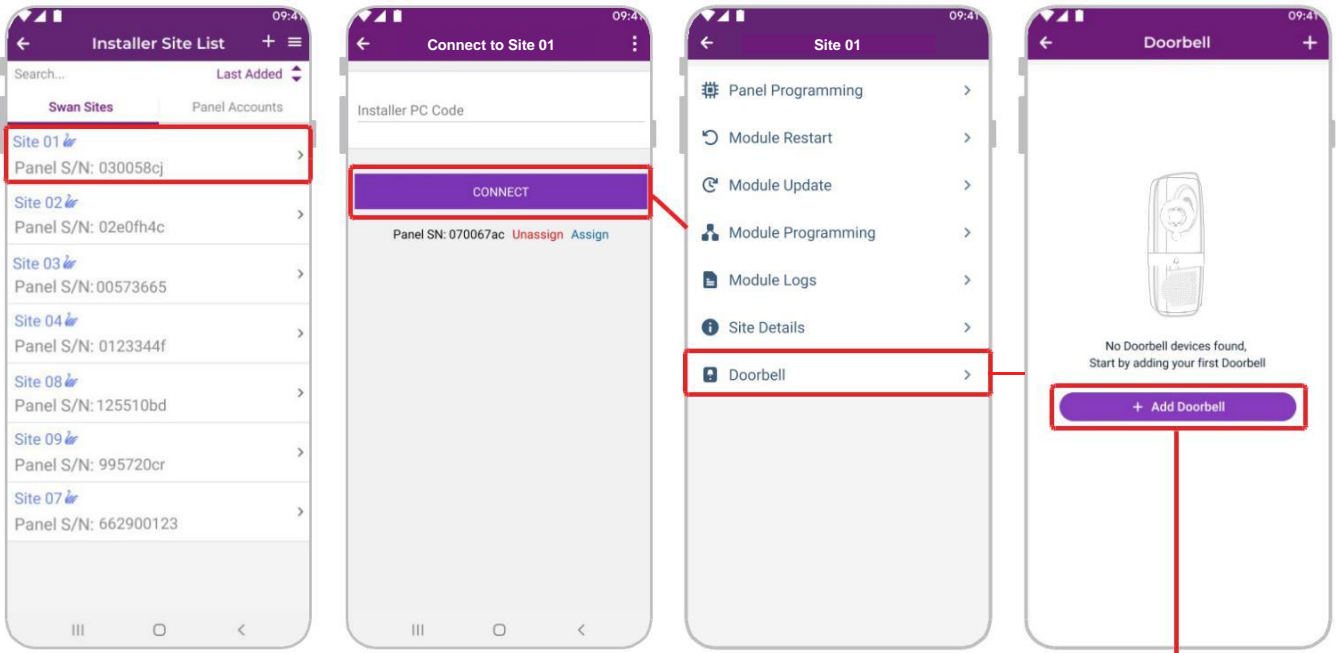
Power Supply

When connecting the DB7 for the first time to power, the battery must be charged at least 60%, otherwise, not all functions may be available and the DB7 might shut down. Usually, normal operation can be resumed when the battery is over 60% when connected the first time. Usually, with a proper power supply, the DB7 will be ready to test use after one hour of charging or out of the box. Battery indication will be available in the application after about 10 minutes.

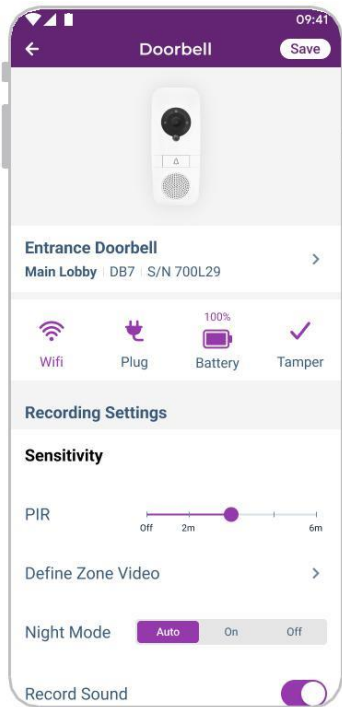
Using Existing Doorbell Wires

Existing doorbell wires can be used, but **DO NOT** connect the DB7 in series with previously installed bell(s). The DB7 may NOT function after the battery will be drained out due to weak power supply.

Adding the DB7 using Installer Section in BlueEye



Doorbell Configuration

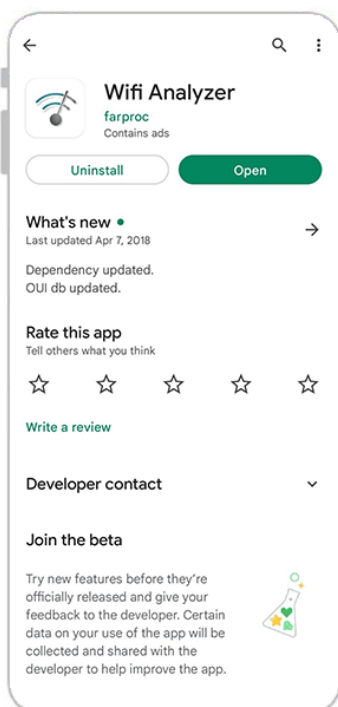


WiFi Connection:

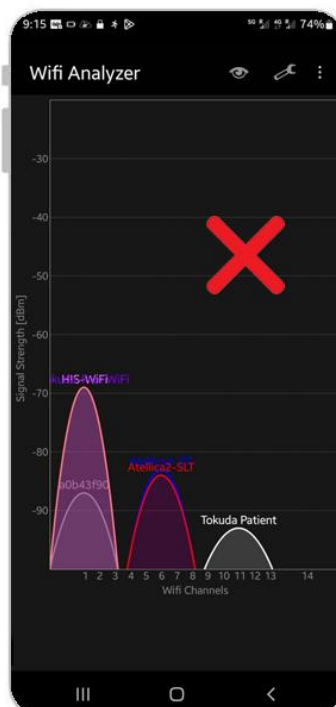
It is highly recommended to check that your WiFi access point network is installed properly and that it does not have overlaps that may seriously affect the quality of connections. Please download the WiFi Analyzer app, or similar to Picture 1, to scan the WiFi networks (GPS location should be activated in most apps).

Make sure that the WiFi network the DB7 is connected to is not sharing the same frequency with another network, as per Picture 2.

If there are at the same frequency with another network, as per Picture 3, you must change the channel frequency in the router as the video performance of the network will be affected.



Picture 1



Picture 2



Picture 3

DBC5 Chime Module

After the DB7 is connected, plug the DBC5 into the AC outlet. Press the “Forward” or “Backward” buttons to change the ringtone. To save the ringtone selection, press and hold the “Volume” button for 5 seconds until the beep sound. Next, press the Ring button on the DB7; you should hear a beep from the DBC5, indicating that the ringtone was set. For other adjustments, please refer to user manual.

Bell LED Indication (May vary from version to version)

Green - Connected to WiFi and Paradox server (MQTT), normal operation.

Green flashing - Speakerphone call in progress.

Blue solid - Connected to WiFi, No MQTT. Please confirm that the WiFi network has unrestricted internet access.

Red flashing for 1 minute, then solid - Lost WiFi connectivity.

Blue flashing - Indicates QR code scanning mode.

Purple solid - Firmware upgrading in process.

Marking Site per Regulations

In many countries/counties it is required by law to indicate that the area is video supervised by a clear notice, by sign, or sticker. If it is required where the DB7 is installed, make sure you comply with the local regulations.

Thank you for choosing Paradox Products

PARADOX