




Cautions in use

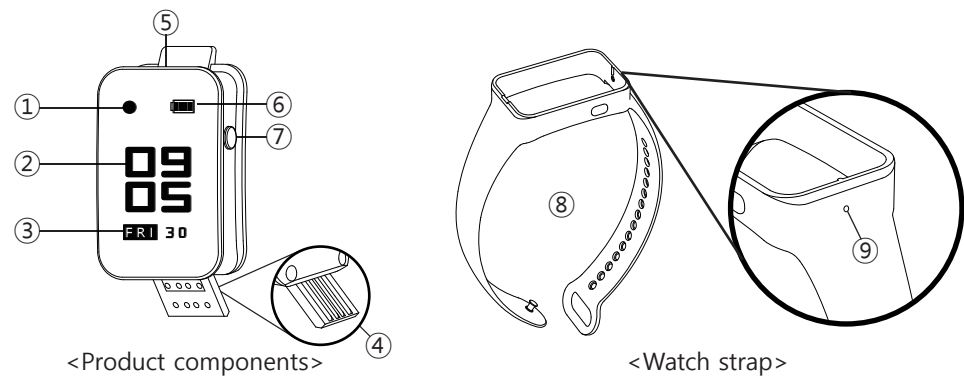
- * We are not responsible for the loss of recordings caused by wrong usage, A/S, other reasons.
- * We are not responsible for the damage or third party's claims caused by the usage of this product.
- * Disassembly, remodeling, impact, the usage in place of low temperature, high temperature, high humidity can be the cause of failure.
- * Please save the important recordings into PC frequently.



Water resistance

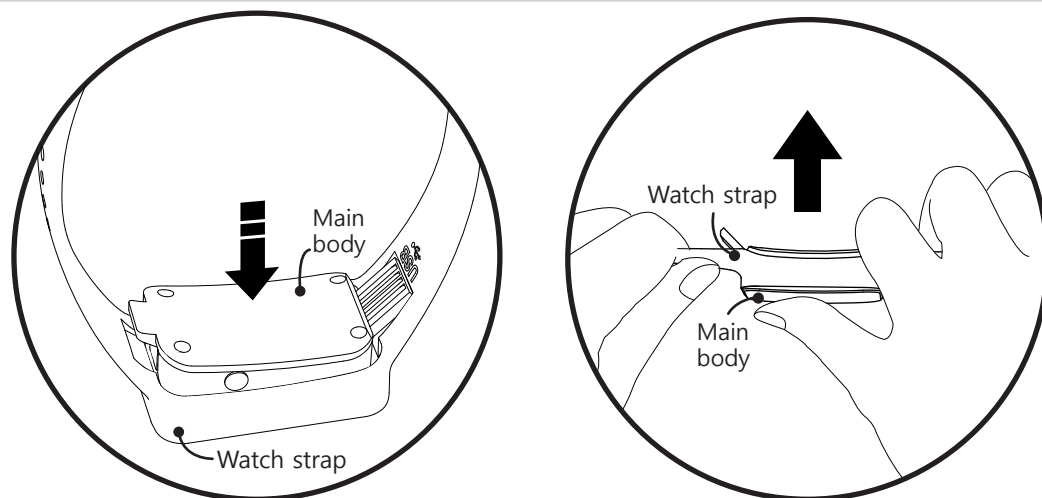
- * This product supports water resistance.
- * For normal use of water resistance, read the following carefully.
- * Failure to comply with the following may result in damage to the product or no performance guarantees.
- * Avoid exposure to contaminated water, chemicals etc.
- * Do not use products when diving or water sports.
- * Don't put excessive water pressure on the product. (For example, water from a faucet)
- * If the product is damaged or damaged by an external impact, the water resistance may deteriorate.
- * Don't take it apart yourself. Damage to the water resistance may occur.
- * If the product is submerged or the microphone is wet, smooth operation may be difficult. Dry the product completely before using it.

Name of each part & components



- ① Recording sign ② Watch screen ③ Day and date display ④ USB terminal
⑤ Microphone ⑥ Battery Indicator ⑦ Recording button ⑧ Watch strap ⑨ Microphone hole

Installing and separating the watch strap



※Install the main body to watch strap
Push the front of the main body from bottom to top and install it to the watch strap.

※Separate the main body from watch strap.
Push the front of the main body outwards the watch strap to separate the product from the watch strap to connect it to PC.

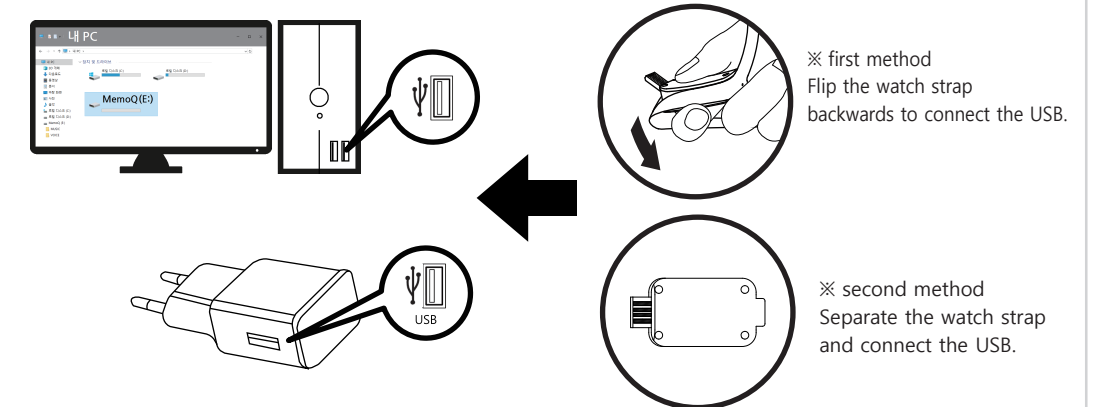
⚠ Caution : Install the directions of body USB terminal and watch strap to be exactly the same.

Instructions for use

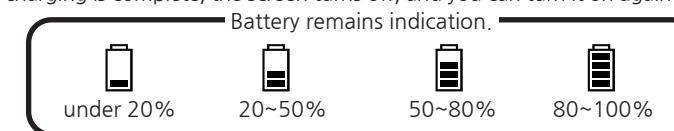


Charging

- * The product has a built-in battery and can be used after charging.
- * Charging starts when the product's USB terminal is connected to the PC's USB port or a charging adapter (optional).
- ⚠ Caution : Be sure to use a certified charging adapter (rated output DC5V/500mA or higher).
Damage to the product due to a defective charging adapter may result in paid repair.



- ⚠ Caution : Charging will not start if the USB terminal is connected in the wrong direction.
- * During recording, you can check the remaining battery status according to the battery icon displayed on the watch screen.
- * When charging is complete, the screen turns off, and you can turn it on again by pressing the recording button.




Connecting PC USB

- * When this device is connected into the USB port of PC, it is recognized as a "Removable disk (MEMOQ)", and copy, movement, deletion, playback of file is possible.
- * For playback, please use the music playback software of PC.

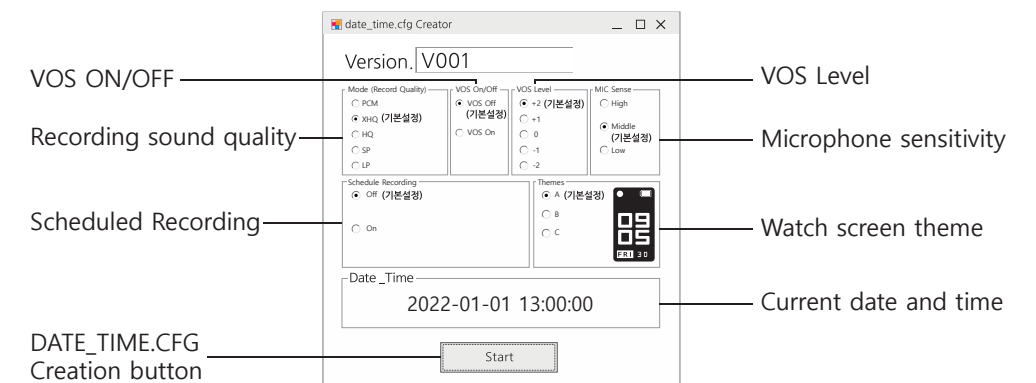
- ⚠ Caution : Do not connect to the PC USB port or charging adapter(option) when the USB terminal is wet.
- ⚠ Caution : When you separate product from PC, please be sure to perform "hardware safety removal".
When you remove product from PC by force, fatal error on product can occur.



Setting the recording function

How to use time setting program

1. After connecting the product's USB terminal to the PC's USB port, run the "TIME SETUP" program stored in the product.



2. After checking the settings according to the usage environment, click the "START" button.
3. If the "DATE_TIME.CFG" file is normally created in the product, disconnect the product from the USB port to complete the setting.

- ⚠ Caution : The date and time set on the PC are displayed.
If the date and time are displayed differently, please check the PC settings.
- ⚠ Caution : If the product is not separated immediately after clicking the START button, a time error will occur as much as the delayed time.
- ⚠ Caution : If the product is not separated from the PC after clicking the START button, the setting will not be completed.

1. MODE (Record Quality)

* Recording sound quality setting.

- PCM(No compression : 705kbps/44.1kHz), XHQ(Ultra high sound quality : 128kbps/32kHz), HQ(High sound quality : 64kbps/16kHz), SP(Low sound quality : 32kbps/8kHz), LP(Long time sound quality : 16kbps/8kHz)

💡 Tip : Higher recording quality improves sound quality, but increases memory and battery usage.

2. VOS ON/ OFF

* VOS Recording : If there is no sound during recording, the recording pauses, and when sound is heard, the recording resumes.

- VOS OFF ,VOS ON

💡 Tip : Unnecessary silent sections are not recorded, saving listening time and memory usage.

⚠ Caution : The battery life is the same regardless of VOS ON/OFF, the difference is that it creates a file by saving only the part where the sound is detected.

⚠ Caution : There is a risk that it may not be recorded depending on the volume, we recommend VOS OFF recording for important recordings.

3. VOS LEVEL

* Set the volume required to resume recording from a pause during VOS recording.

- +2 Very sensitive(About 52dBA), +1 Sensitive (About 55dBA), 0 Normal (About 58dBA), -1 Insensitive(About 61dBA), -2 Very insensitive(About 64dBA)

VOS Level				
+2	+1	0	-1	-2
(React to low sound)	←	Microphone sensitivity	→	(React to loud sound)

💡 Tip : Change the VOS LEVEL setting after testing it according to the location and situation.

4. MIC Sense

* Set the microphone sensitivity

- High sensitivity, Middle sensitivity, Low sensitivity

💡 Tip : When the recording sound is low, set it to the 'High', and when the recording sound is loud, set it to the 'Low'. Please change it after testing it to match the sound.

5. Scheduled recording

* Recording starts automatically once a day at a set time.

Schedule Recording

Off Start Time : 13 : 45

On Duration : 1

· Start time : Time to start scheduled recording (24-hour system), Minute (60 minutes)

· Duration : Time to continue scheduled recording (1/2/5/10/20 hours)

⚠ Caution : PCM mode can't be selected during scheduled recording.

⚠ Caution : VOS recording can't be used during scheduled recording.

⚠ Caution : If the scheduled recording set time overlaps during normal recording, the scheduled recording will be ignored.

⚠ Caution : If the date and time settings are not correct, scheduled recording may malfunction.

⚠ Caution : If the battery is low, scheduled recording will not work. Please use it after charging.

6. Theme

* Set the watch display style.

- A, B, C



A



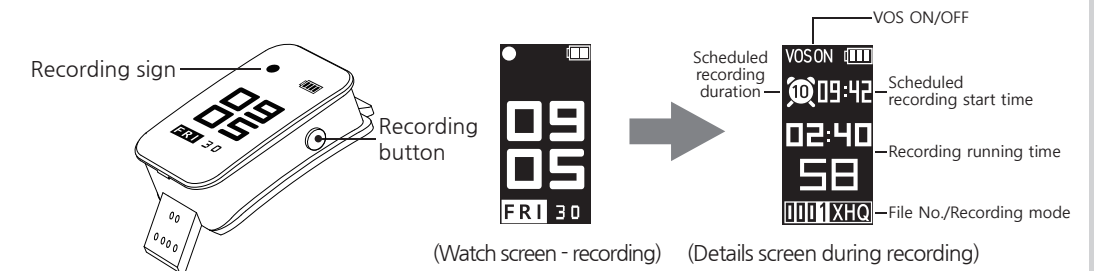
B



C

Turn on the power (start recording)

1. Press and hold the recording button to turn on the power and recording starts immediately.



2. If you press the recording button briefly while the watch screen is displayed, the recording detail screen is displayed.
3. The screen turns off automatically after about 20 seconds.
4. To turn on the screen again, you can display the watch screen by briefly pressing the recording button.

Turn off the power (End recording)

1. During recording, if you press and hold the recording button until the OFF screen is displayed, the recorded file is saved and the power is turned off.



- Recorded files are created sequentially from R-00001 in the Voice folder, and up to 9,999 files can be created.
- It is saved in R-00001_2201011200 (YY/MM/DD/HH/MM) format, and the file names are classified according to Normal Recording (REC)/VOS Recording (VOS)/Scheduled Recording (SCHED).

Ex) $\left\{ \begin{array}{l} R-00001_2201011200_REC.MP3 \text{ (Normal recording)} \\ R-00001_2201011200_VOS.MP3 \text{ (VOS recording)} \\ R-00001_2201011200_SCHED.MP3 \text{ (Scheduled recording)} \end{array} \right.$

⚠ Caution : If the battery is discharged, the set date & time will be reset to 00:00 on January 01, please use it after resetting it after charging.

⚠ Caution : If the watch strap and the body are not properly installed, the microphone hole may be covered and the microphone sensitivity may deteriorate.

⚠ Caution : If water or foreign matter gets into the microphone hole, the sound may become low or recording may not be possible. Always dry and clean before use.



Recording



Detailed explanation of time setting program

Specifications

Model	SR-600		
Memory	8 GB	16 GB	
Recording time	PCM	About 24 hours	About 48 hours
	XHQ	About 144 hours	About 288 hours
	HQ	About 288 hours	About 576 hours
	SP	About 576 hours	About 1152 hours
	LP	About 1152 hours	About 2304 hours
Hours of battery use	PCM	About 27 hours	
	XHQ	About 27 hours	
	HQ	About 33 hours	
	SP	About 33 hours	
	LP	About 33 hours	
Charging time	1 hours		
Max recording files	9,999 files		
Size, Weight	(W)27.7 X (D)75.2 X (H)112.3mm, 27.2g		
Battery	3.7V, Li-Polymer, 180mAh		
Usage environment	Temperature : 0~40, Humidity : 20~80%		
Component	Watch, Watch strap, Manual		

Warranty Card

Product name	Voice Recorder	
Model No.	SR-600	
Purchasing Date		
Purchasing Place		
Telephone No		
Others		
Warranty period	1 Year	
Customer	Name	
	Address	
	Telephone	

Paid service

- Defect caused by careless use.
- Defect caused by user's internal modification.
- Defect caused by natural disasters like fire, salt damage, flood, earthquake, etc.
- Defect out of warranty period.
- If parts need to be replaced.