

# NVR USER MANUAL

**Tips:**User manual and more software(include CMS),  
please go to <http://www.dvr163.com/help/download.php> to download

## 1 Fast Networking

**Step:** Right click mouse in main menu→fast networking→Choose Auto Config→Click OK.

If want to manual config, input IP address, click diagnose. If shows healthy network, indicates the connection of Internet is good.

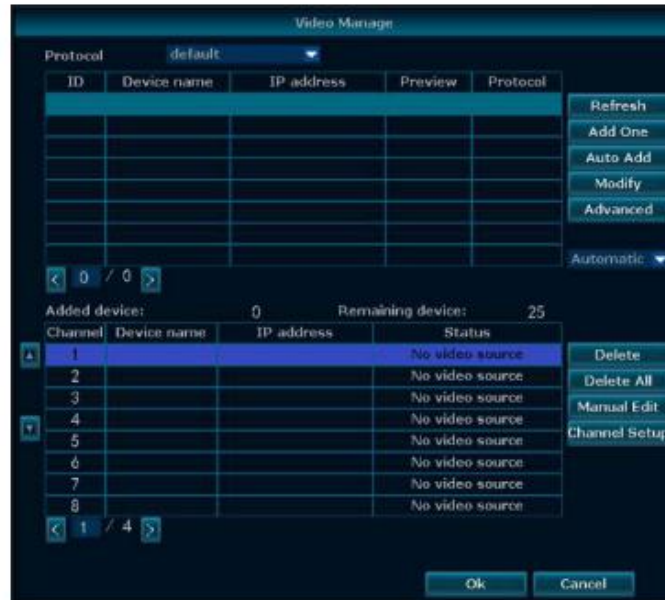
If shows network anomaly, plz process according to the dew.(Ensure your device has accessed network)



## 2 Add IPC

**Step 1: Auto add** ( Upon V2.8.6.0 Version support this Function):

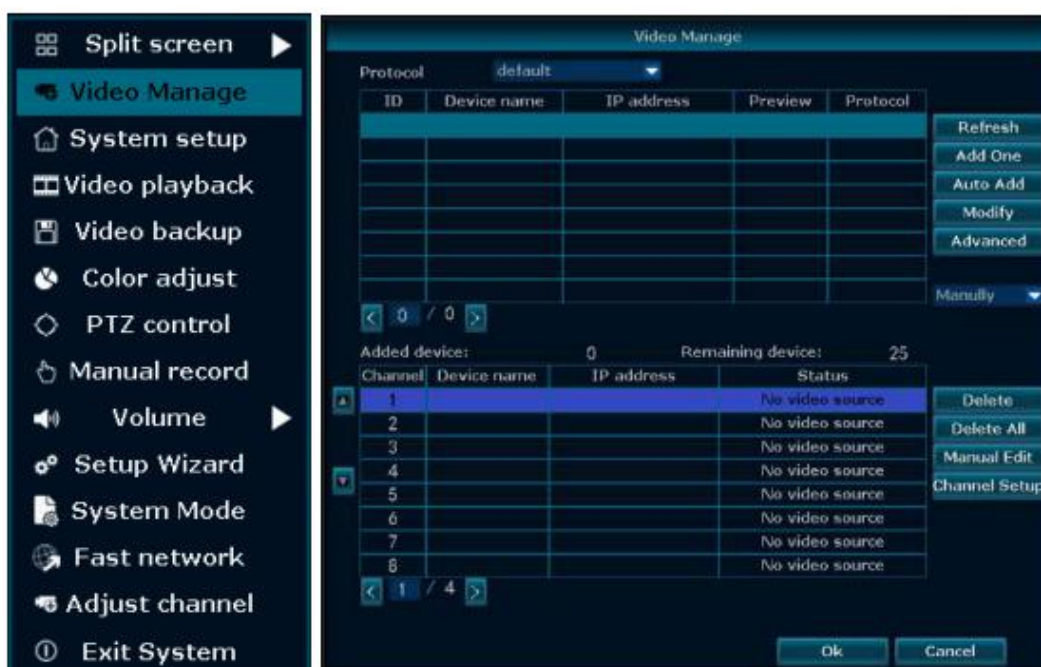
Power on Recorder and camera , and let them in the same LAN. After automatic set up function is enabled, the recorder will auto add the searched cameras to the channel.



**Step 2: Manually add**

If don't want to use "auto add" function , Right click mouse in Preview Interface →Click "Video Manage", →Click the drop-down frame in the selected box at the right side of video management, double left click mouse or click the "add" button to add IPC to the channel . Or Click Auto add (Auto add can add all the IPC Searched to channel list )

Delete channel : Delete Specified IPC Channels Edit channel: Manually Revise channel parameters (such as IPC password and user name ) ,Click ok to finish the operation .

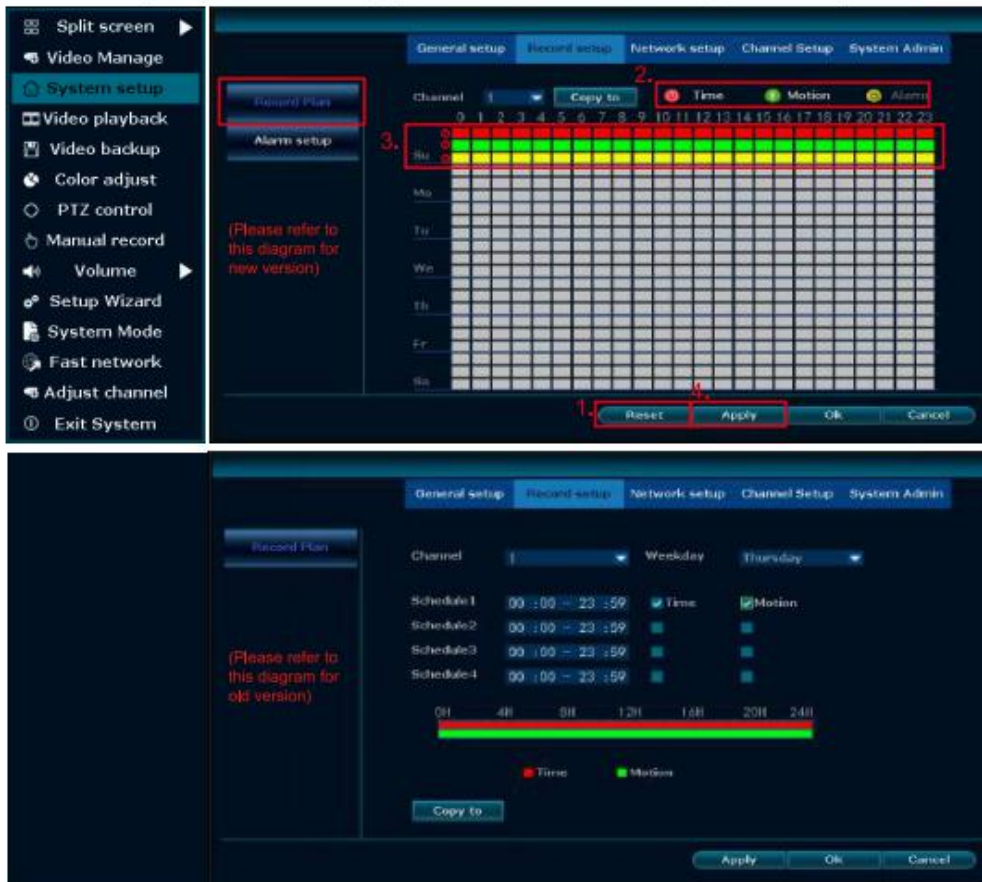


### 3 Record Video

Recording video is very easy on surveillance system.

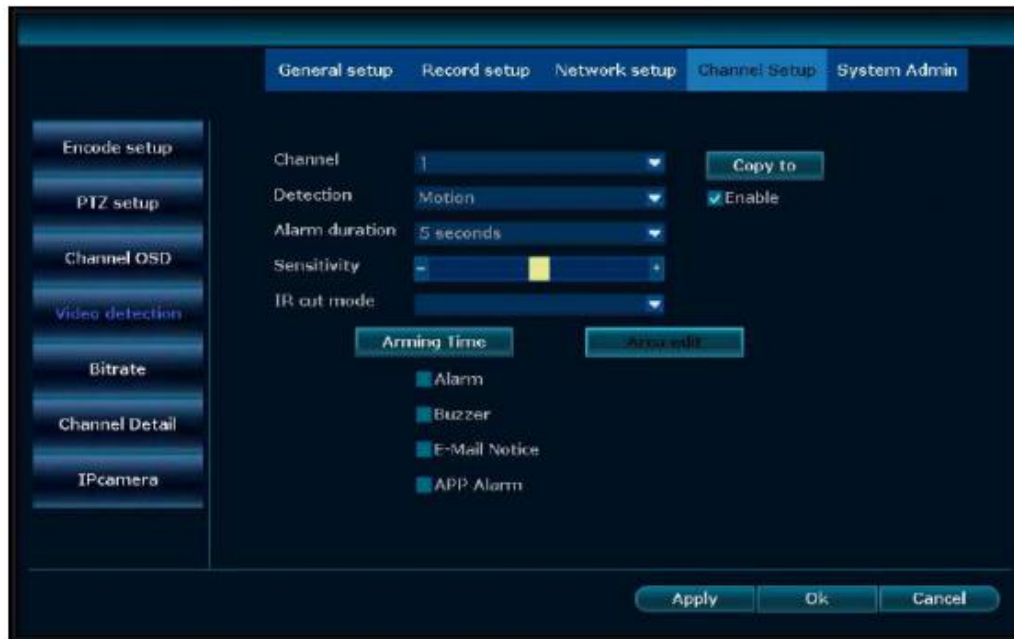
**Timing Recording:** Setup recording time range: Right click mouse →System setup →Recording setup →Recording plan . Click Reset Button ( For example "1" as picture shows ),After come into Reset Interface →Click Timing Button (For example "2" as pictures shows ) ,And put mouse icon on the upper left corner (For example"①" as pictures shows ) , Press and drag the mouse to the right to choose the time , Then list will turn to red color , Press "Apply "Button , Then setup successfully.

**Alarm Recording:** Set up recording time arange ,Right click mouse→System setup →Record setup →Record plan. Click Reset button ( For example "1" as picture shows ),After come into Reset Interface →Click alarm Button (For example "2" as pictures shows ) ,And put mouse icon on the upper left corner (For example "3" as pictures shows ) , Press and drag the mouse to the right to choose the time , Then list will turn to yellow color , Press "Apply "Button , Then Alarm recording successfully .



**Motion Recording: Step 1:**Setup recording time range. Right click mouse →System setup →Recording setup→Recording plan. Click Reset Button ( For example "1" as picture shows ),After come into Reset Interface-Click Motion Button (For example "2" as pictures shows ) ,And put mouse icon on the upper left corner (For example"②" as pictures shows ) , Press and drag the mouse to the right to choose the time , Then list will turn to green color , Press "Apply "Button , Then setup successfully.

**Step 2 :** Choose Channel setup →Video detection →Choose Sensitivity as you want →Detection type change into Motion →check Buzzer , Alarm , Email Notification ,App Alarm notification etc →Set up the protection time →Click Copy to →Click Ok .






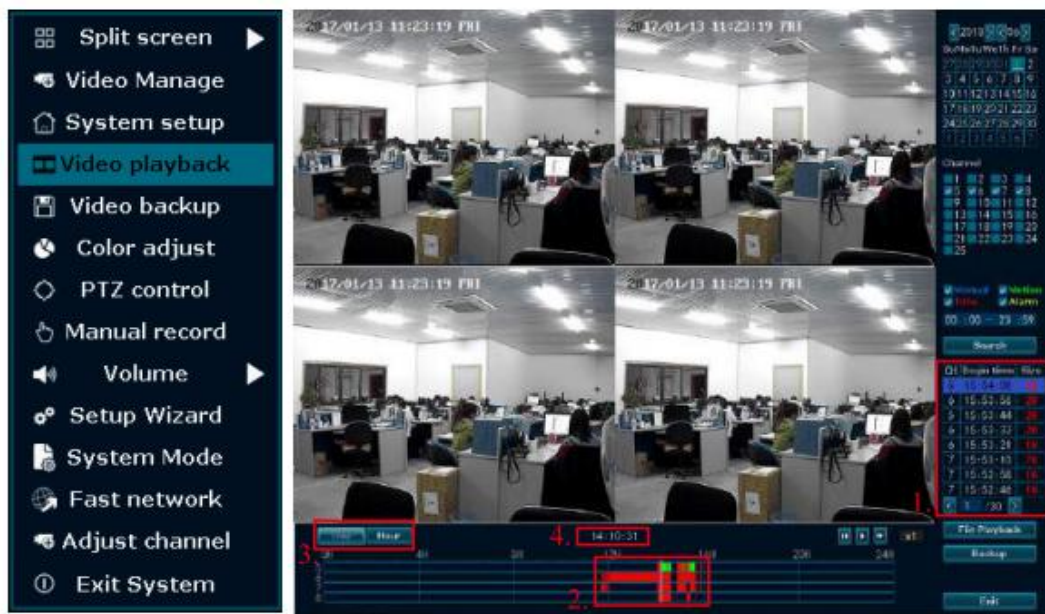
**Note :** User can set up any period of the time they want , for example 0:00:00–23:59:59, That is 24 hours \*7 days recording ,When NVR detects hard disk the default setting will be 24 hours \*7 days recording , Red color means Timing recording , Green color means motion recording , Yellow color means Alarm recording.

## 4 Video Playback

**Steps:** Right click mouse in main menu→Video playback→choose date, channel, record mode→click Search→then can view playback file.

**Warm prompt:**

1. Illustration for playback button:  Play,  Pause,  Fast forward x2,x4,x8.
2. Play file: Choose the recording file in file list, as number "1" shown in picture. Choose one of the recording, click "play" to play to recording file;
3. Video backup: Choose the recording file in file list, as number "1" shown in picture. Insert the U flash disk, click "video backup" to backup the file;
4. Timeline: click "date" and "time" at left bottom to check the timeline of recording, show number "2" shown in picture;
5. On the timeline with recording file, left click the mouse, then can playback the file.



## 5 Video Backup

**Steps:** Right click mouse in main menu→Video backup→Choose channel No.→Choose Record mode →In search time, input beginning time and end time→Click search, recording will come out→Choose the video which need to backup→Click video backup.

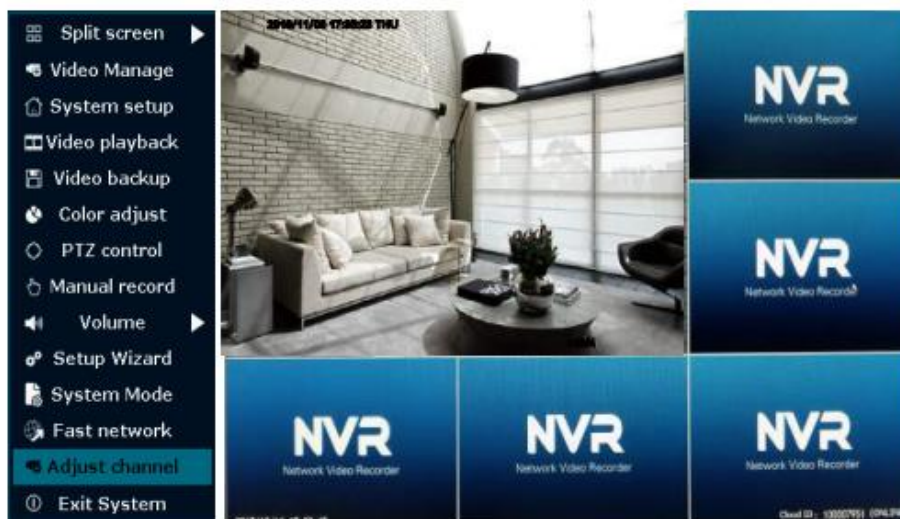
**Tips:** Support 32G U disk backup maximum, recording file will be packed every one hour.



## 6 Adjust Channel

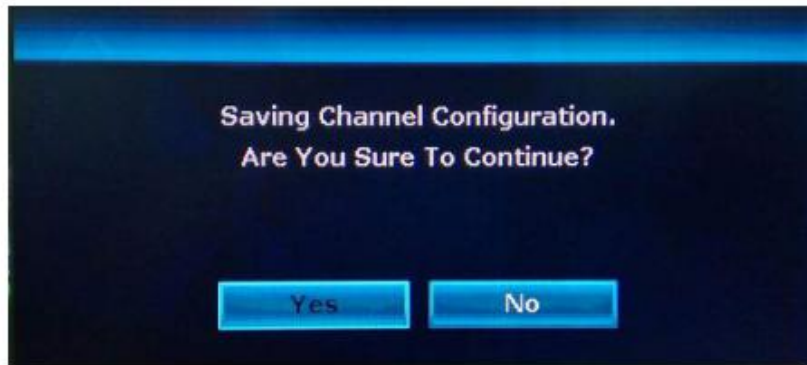
**Step 1:** Right click main interface→Adjust channel , click it and enter into setup interface.

**Step 2:** On channel setup interface, click one channel image, press tight the left button of mouse and drag the image to other channel position.



**Step 3:** After setup, right click interface, and it will remind to save the settings, click "Yes" and save.

**Tips:** After setup please remember to click "save", otherwise it won't work.



## 7 Confirm setup result

**Step:** After channel setup, right click main interface→video management→added device, if the position of newly setup channel has changed, that means the setup works.



## 8 Access In LAN

**Step 1:** Fast Networking—check the IP address of the device.

**Step 2:** Access the computer in same LAN, input video recorder's IP address and port(if port is 80, no need to input) in IE browser or any other browser. Then it will access in LAN log in web page, input user name and password, click log in.



**Step 3:** Once access successfully, you can get the video.

**Tips:** Please make sure video recorder and computer are in the same network segment.





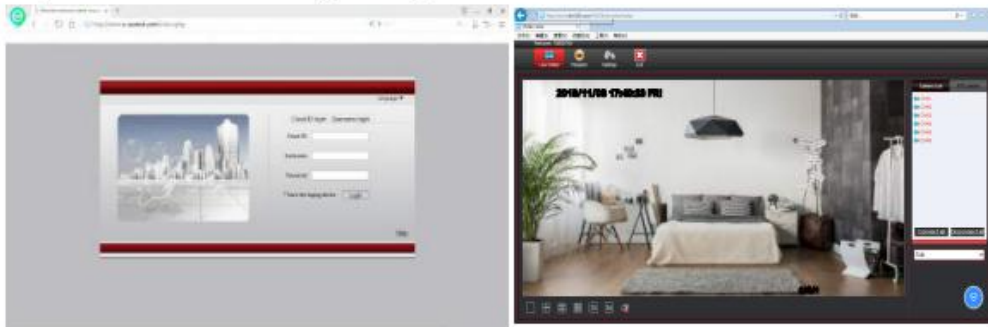
## 9 Access In WAN

**Step 1:** Right click mouse in main menu  
→Fast Networking→check the ID of the device.



**Step 2:** Open the IE browser, enter the [www.e-seenet.com](http://www.e-seenet.com) in the address bar.  
Then it will access log in web page, input ID, user name and password, click log in.

**Step 3:** Once access successfully, you can get the video.



**Tips:** Video quality and fluency depend on the upload speed of video recorder and download speed of computer, each channel need above 30KB.

## 10 Mobile application download and installation

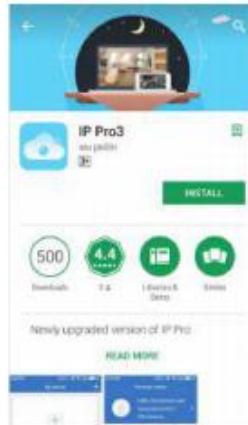
**No. 1:** Go to <http://www.dvr163.com/download/indexm.php?p=ipro3> in mobile browser, enter download page, click install to download and install APP.

**No.2:** Please scan the QR code in manual to download APP.

**Note:** For IOS system, it requires IOS 8.0 version or above. For Android, Android 4.4 or above.



APP Store



Google play APP

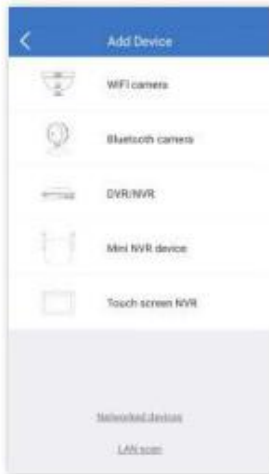


APP download

## 11 Esee mobile application(IP PRO3)-Add device

**Step 1:** Register | **Step 2:** Enter device interface | **Step 3:** Add device | **Step 4:** Added successfully. Click channel No.to get video | **Step 5:** Remote playback

A screenshot of the 'Log in' screen. It has a white background with a blue header. The text 'Log in' is at the top. Below it, there are two input fields: 'Please input email address/cellphone number' and 'Please input password'. There are links for 'Forgot password?' and 'Register'. A blue 'Confirm' button is at the bottom. At the very bottom, there is a link for 'Local experience'.A screenshot of the 'registered' screen. It has a white background with a blue header. The text 'registered' is at the top. Below it, there is an input field for 'Please enter email/phone number'. A blue 'determine' button is in the center. Below the button, there is a checkbox and text: 'Agreed with the software's usage service agreement, and privacy agreement'. At the bottom, there is a link: 'Already have an account? Log in now'.A screenshot of the 'set password' screen. It has a white background with a blue header. The text 'set password' is at the top. Below it, there is a message: 'The verification code has been sent to 13852888888@NET, please note that check'. There are three input fields: 'Please enter verification code', 'Please input verification code', and 'Please confirm your password'. A blue 'determine' button is at the bottom. At the very bottom, there is a link: 'Already have an account? Log in now'.



Note: Each cellphone number/email address can be used for registration one time.