



Valkyrie ABI IP65

ma_valkyrieabiip65_01_010001_en_190102

Addressable Wall Beacon Outdoor Use-IP65

MADE IN PORTUGAL - EU

GLOBAL FIRE EQUIPMENT S.A.

Sítio dos Barrabés, Armazém Nave Y, Caixa Postal 908-Z, 8150-016 São Brás de Alportel - PORTUGAL

Tel: +351 289 896 560 • Sales: sales@globalfire.pt • Technical Support: techs@globalfire.pt • www.globalfire.pt

TECHNICAL SPECIFICATIONS

SUPPLY VOLTAGE	20 V to 30 V DC
LOOP CURRENT - QUIESCENT / BEACON ACTIVE	0.5 mA / 3 mA - 80 mW @ 30 V DC
CABLE SIZE	0.5-2.5 mm ²
RESET/START-UP TIMES	20 seconds max.
PROTECTION CATEGORY	Type B - Outdoor Use / Rating IP65
COLOUR / CASE MATERIAL	Red / ABS & PC - Flame Retardant rating 94V0
OPER. TEMPERATURE / MAX. HUMIDITY	-25°C to 70°C / 95% RH Non-Condensing
DIMENSIONS	112 (D) x 82 (H) mm

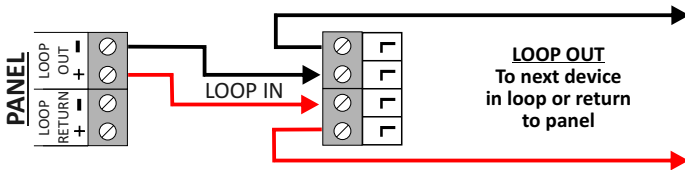
ORDER CODE

DESCRIPTION

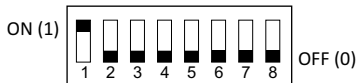
VALKYRIE ABI IP65

ADDRESSABLE WALL MOUNTED BEACON W/ ISOLATOR - IP65 RATED

TERMINALS - LOOP CONNECTIONS



D.I.L. SWITCH CONFIGURATIONS



Switches 1-5
Used to configure address
in the range 94-125

Switch 6 and 7
Not used

Switch 8
Shadow Beacon

Address Switches

1 ON = 1

2 ON = 2

3 ON = 4

4 ON = 8

5 ON = 16

Sounder Type

Switch No. 8

OFF = Shadow

ON = Normal

BEACON ADDRESS SETTINGS

Sounder 1	Sounder 2	Sounder 3	Sounder 4	Sounder 5	Sounder 6	Sounder 7	Sounder 8
94	95	96	97	98	99	100	101
Sounder 9	Sounder 10	Sounder 11	Sounder 12	Sounder 13	Sounder 14	Sounder 15	Sounder 16
102	103	104	105	106	107	108	109
Sounder 17	Sounder 18	Sounder 19	Sounder 20	Sounder 21	Sounder 22	Sounder 23	Sounder 24
110	111	112	113	114	115	116	117
Sounder 25	Sounder 26	Sounder 27	Sounder 28	Sounder 29	Sounder 30	Sounder 31	Sounder 32
118	119	120	121	122	123	124	125

NOTE: Address programmed on switches 1-5 has an OFFSET of 94.

For example if D.I.L. switches 1-5 are all set to OFF the actual beacon address, as read by the panel, will be 94.