

# TrackMix WiFi

TrackMix WiFi with 4K 8MP Ultra HD resolution captures images with great details. Discover more when zooming in. It can distinguish people, vehicles and pets\* from other objects, providing more accurate alerts. Plus, you can talk back via the camera's built-in mic and speaker.

## 1. Specs



1	Infrared LED
2	Lens
3	Mic
4	Daylight Sensor
5	Spotlight



1	Micro SD Card Slot
2	Reset Button

## 2. Setup and Install

### Set up the Camera

#### What's in the Box

**Note:** The package content may vary and update with different version and platforms, please take the below information only for a reference. And the actual package content are subject to the latest information on the product selling page.

TrackMix WiFi



Reolink TrackMix  
WiFi\*1



1m Network  
Cable\*1



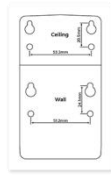
Quick Start Guide\*1



Surveillance Sticker\*1



Pack of Screws\*1



Mounting Template \*1



4.5m Power Extension  
Cable \*1



Power Adapter  
12V/2A \*1




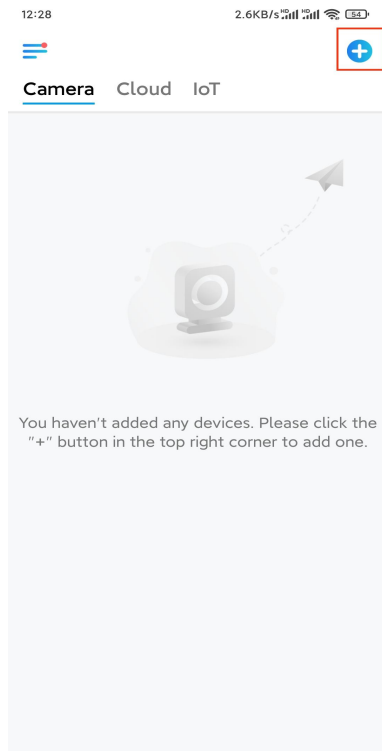
Waterproof Lid \*1

## Set up the Camera on the App

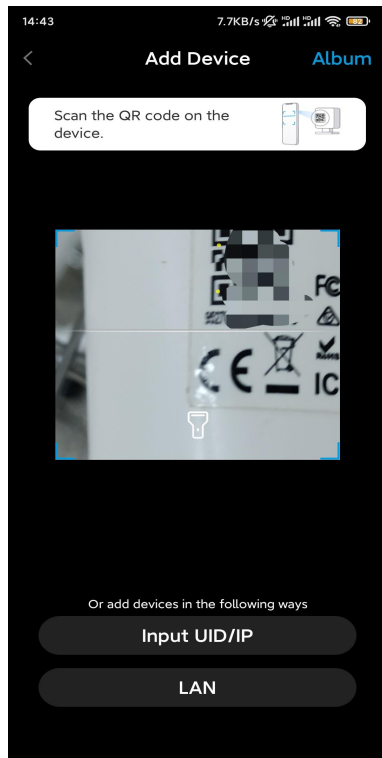
There are two methods to do the initial setup of the camera:  
1. with a Wi-Fi connection; 2. with a network cable connection.

### 1. With Wi-Fi Connection

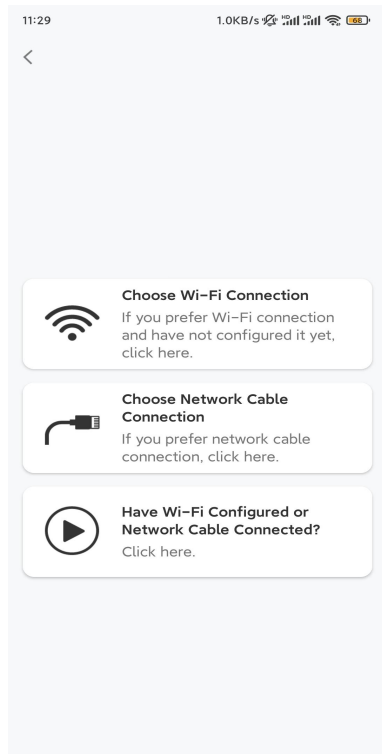
**Step 1.** Tap the  icon in the top right corner to add the camera.



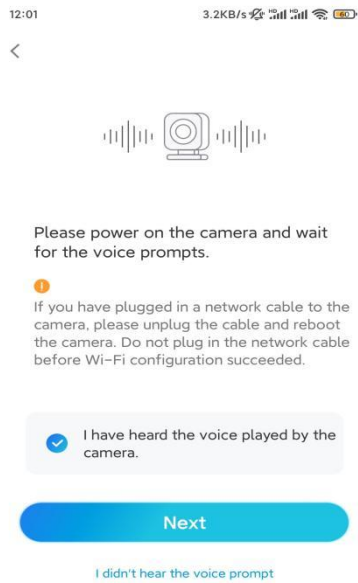
**Step 2.** Scan the QR code on the camera.



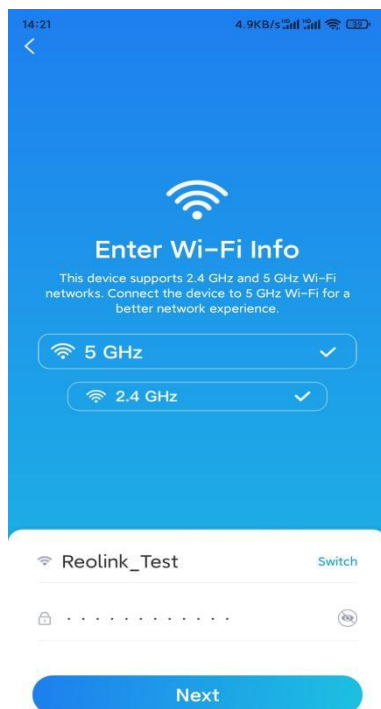
**Step 3.** Tap **Choose Wi-Fi Connection** to configure the Wi-Fi settings.



**Step 4.** After you hear the voice prompts from the camera, tick "I have heard the voice played by the camera" and tap **Next**.

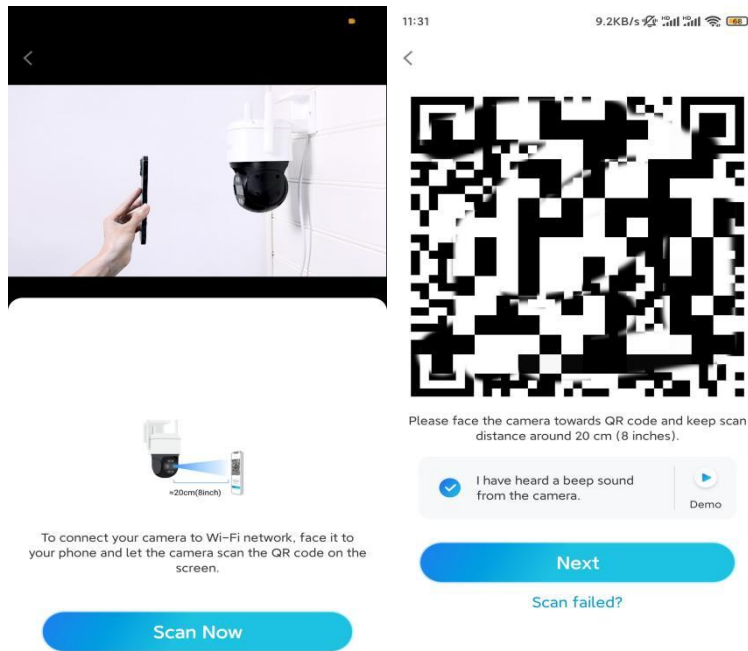


**Step 5.** Select a WiFi network, enter the WiFi password, and tap **Next**.

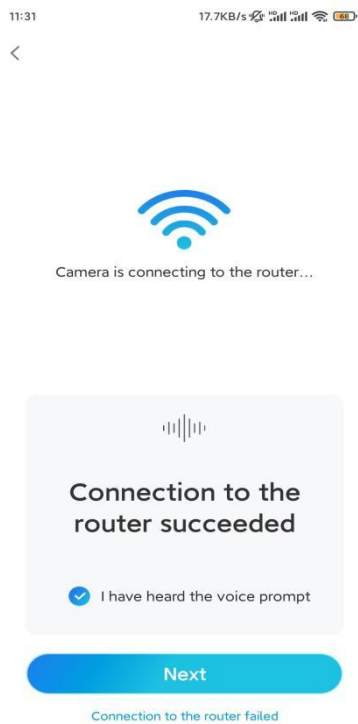


**Step 6.** Scan the QR code on the app with the camera lens. Tap **Scan Now**. The QR code will be generated and displayed on your phone. Please hold your phone in front of the camera at a distance of about 20 cm (8 inches) and have the phone face the camera lens to let the camera scan the QR code.

After you hear the beep sound, tick "I have heard a beep sound from the camera" and tap **Next**.



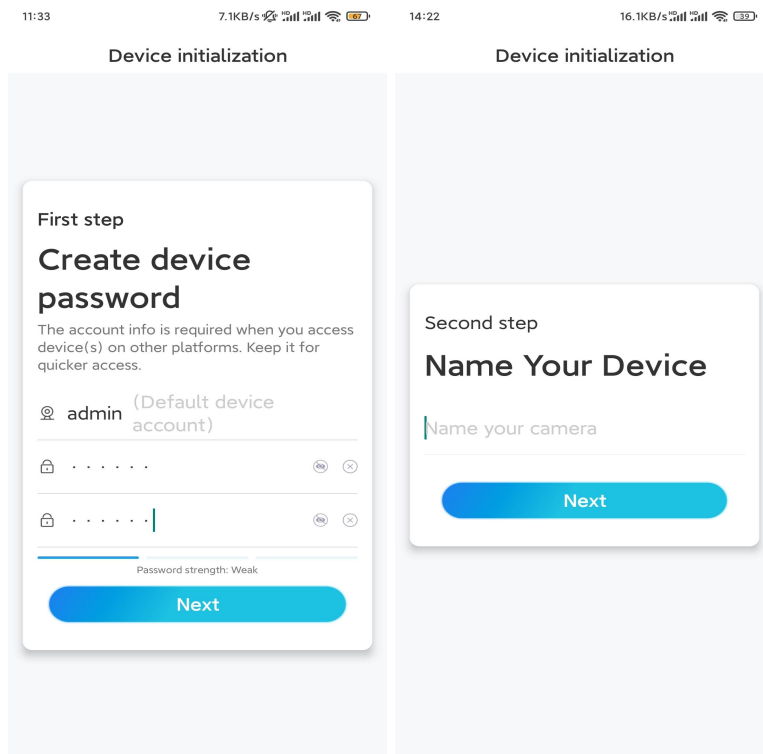
**Step 7.** After you hear a voice prompt "Connection to the router succeeded" from the camera, tick "I have heard the voice prompt" and tap **Next**.



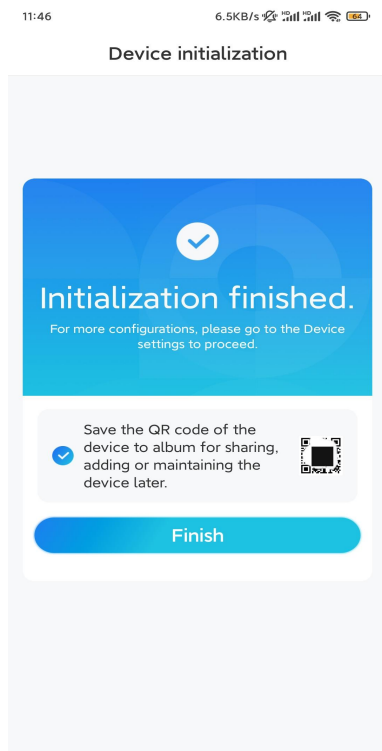
**Note:** If you hear the voice prompt "Connection to the router failed", please double-check if you have entered the Wi-Fi information correctly in the previous

step.

**Step 8.** Create a login password and name your camera.



**Step 9.** Initialization finished. Tap **Finish**, and you can start live viewing now.

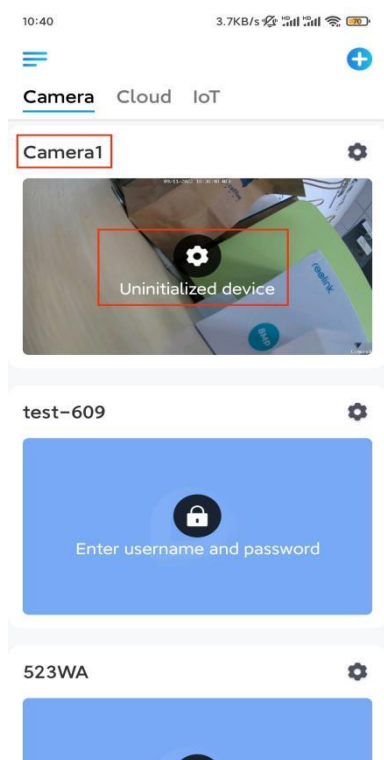
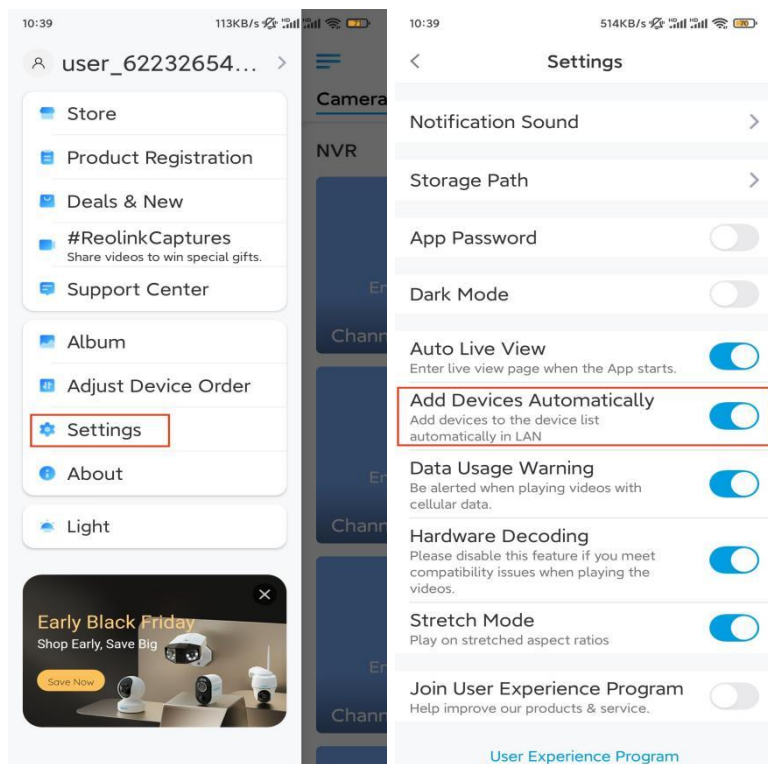


2. With a Network Cable Connection


To do the initial setup, please power on the camera with the DC adapter, connect

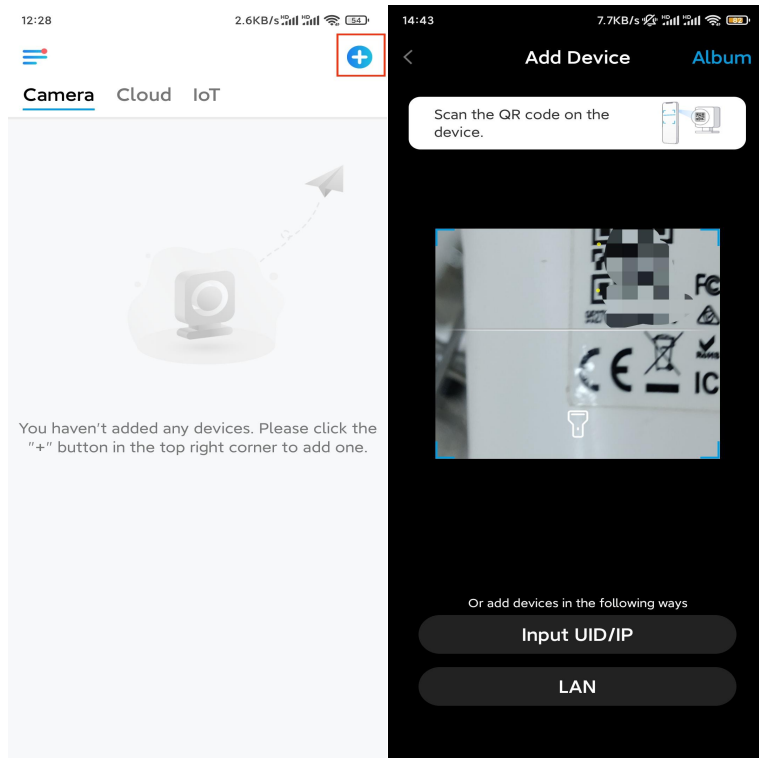
the camera to your router's LAN port with an Ethernet cable, and follow the steps below.

**Step 1.** If your phone, the camera, and the router are on the same network and you've enabled the **Add Device Automatically** option in the App **Settings**, you can tap and select this device on the **Devices** page and skip to **Step 3**.



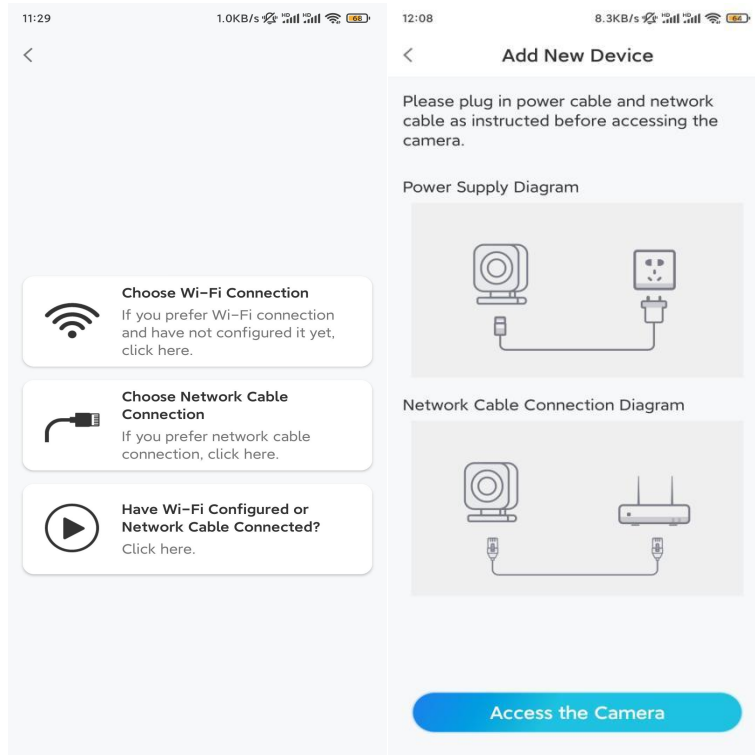


Otherwise, you can tap the  icon in the top right corner and scan the QR code on the camera to add the camera.

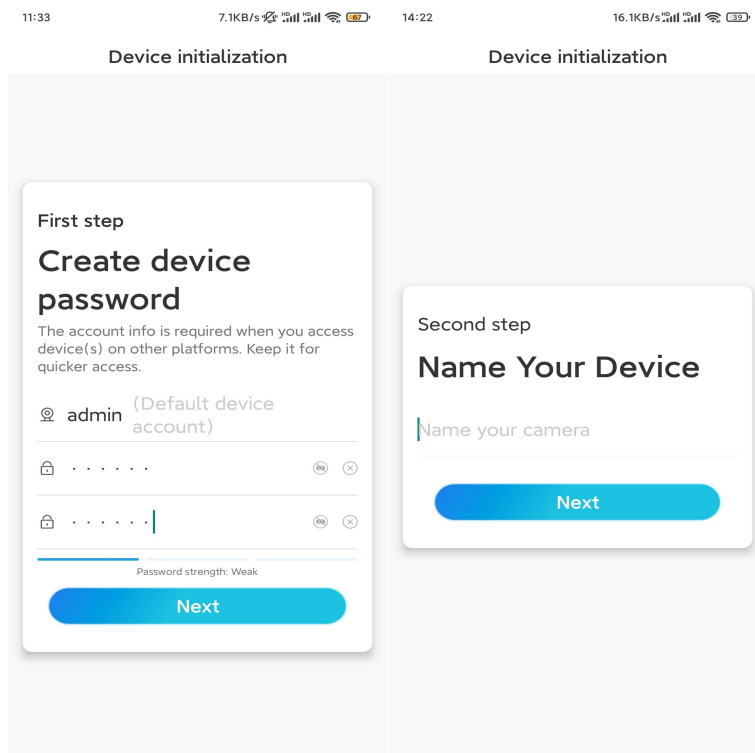


**Step 2. Tap Choose Network Cable Connection.**

Please make sure the camera is connected in the correct way, as shown in the diagram, and then tap **Access the Camera**.

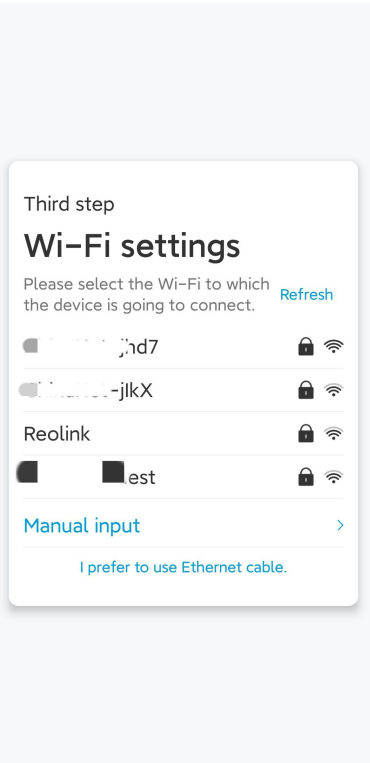


**Step 3.** Create a device password and name the device.



**Step 4.** Select the WiFi network that you want to join, enter the password of the WiFi network, and tap **Save** to save the configuration.

### Device initialization



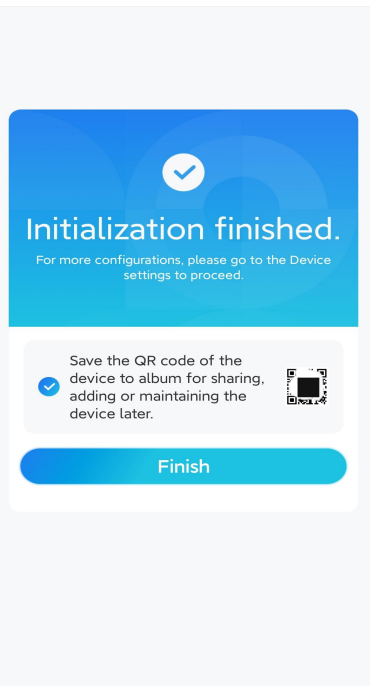
[Cancel](#) Enter the password [Save](#)

Please enter the password of Reolink.

.....|

**Step 5.** Initialization finished. Tap **Finish**, and you can start live viewing now.

### Device initialization



## Install the Camera

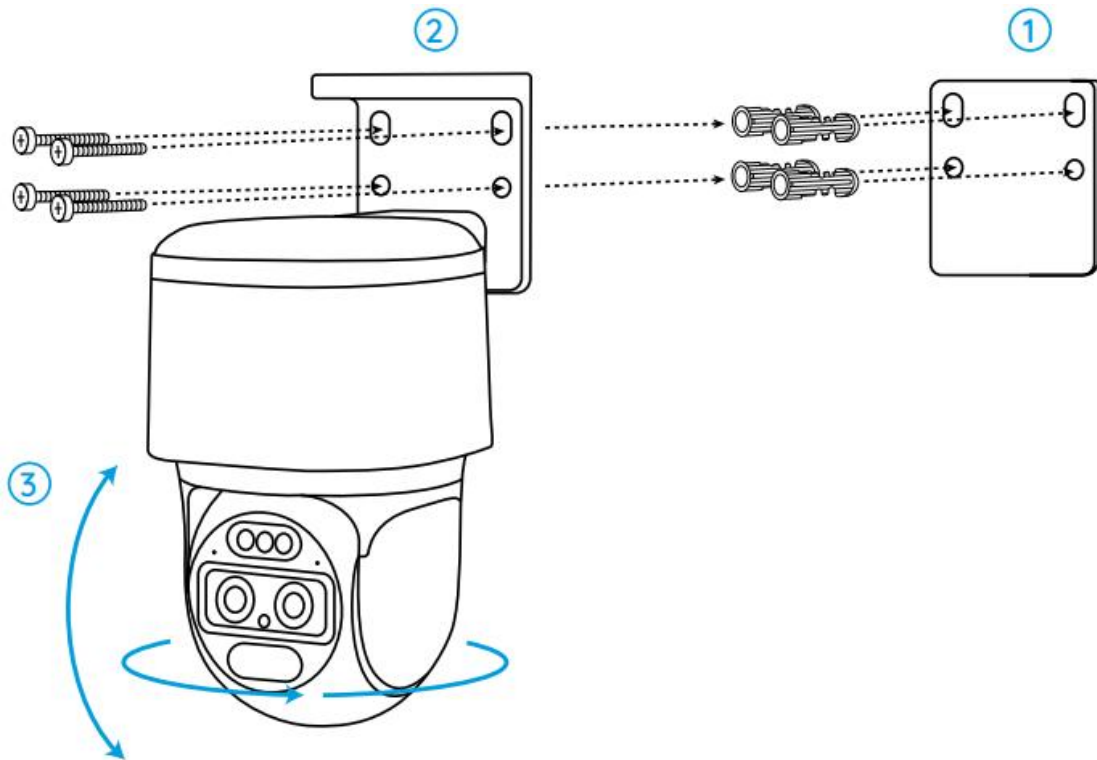
Following the excitement of setting up your TrackMix, you will face up the installation of the camera. So we are here to help you with guides on how to mount the TrackMix camera on the wall or the ceiling. It's up to you.

### Mount the Camera on the Wall

**Step 1.** Stick the mounting hole template on the wall and drill holes correspondingly.

**Step 2.** Screw the mount base to the wall using the screws included in the package.

**Step 3.** You may control the camera to pan and tilt via Reolink App or Client to adjust the camera's direction.



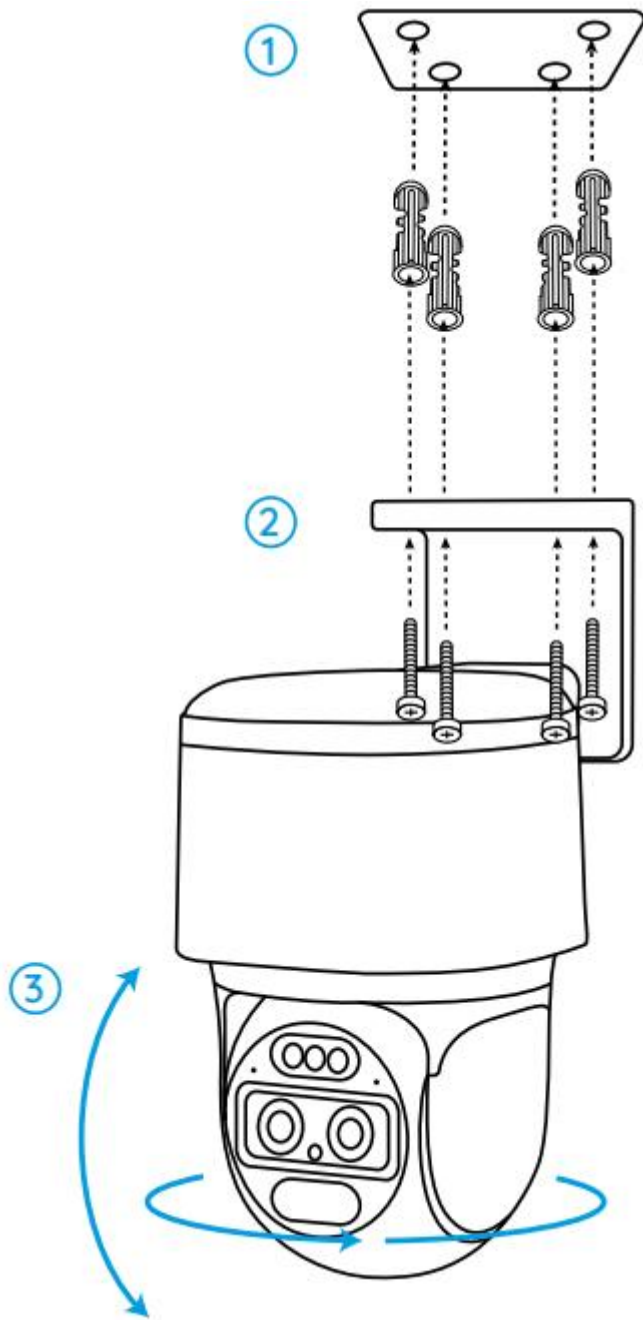
**Note:** If you install the camera on a pretty hard surface such as drywall, use the drywall anchors included in the package.

### Mount the Camera on the Ceiling

**Step 1.** Stick the mounting hole template on the ceiling and drill holes correspondingly.

**Step 2.** Install the mount base to the wall using the screws included in the package.

**Step 3.** Adjust the camera's direction by controlling the camera to pan and tilt via the Reolink App or Client.



**Note:** Use the drywall anchors included in the package if needed.