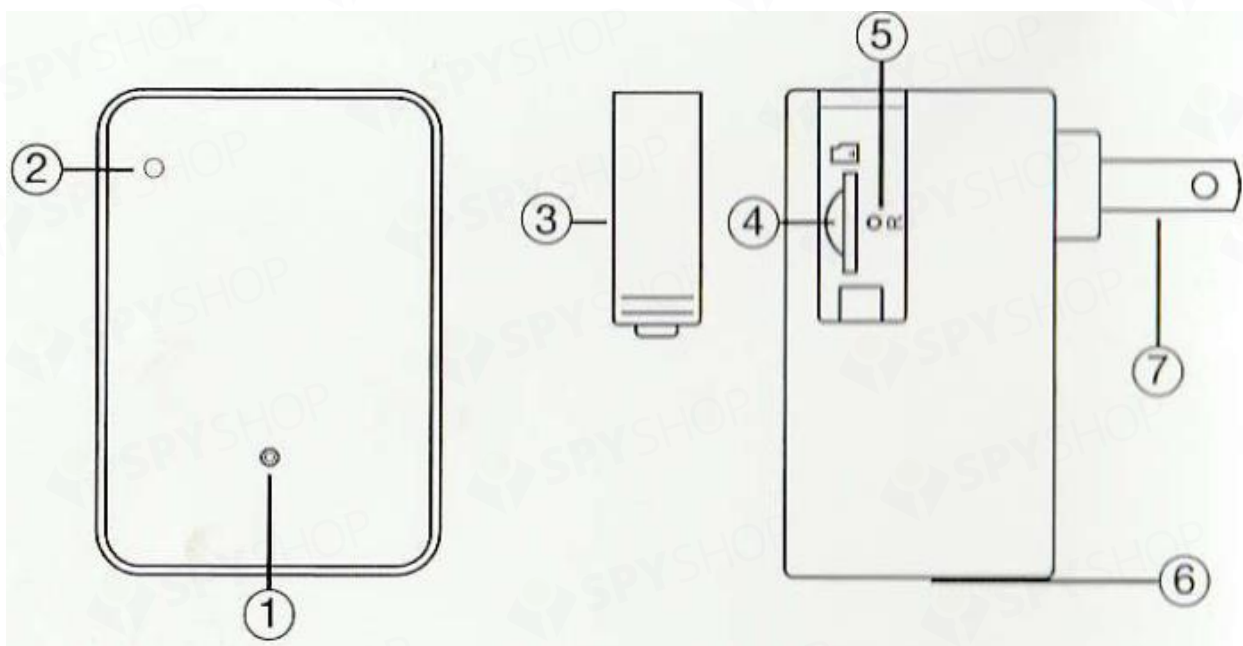


Camera ascunsa in alimentator Aishine

AI-IP025

Alimentatorul Aishine vine cu o camera incorporata ce ofera rezolutii HD 1080p si poate functiona pe baza detectiei miscarii.

- **Ce este in cutie:**
 - Camera ascunsa in alimentator
 - Cititor carduri MicroSD
 - Manual de utilizare



- **Conexiunea cu aplicatia mobila**

Cauta, descarca si instaleaza aplicatia mobila **“HDSmartIPC”**.

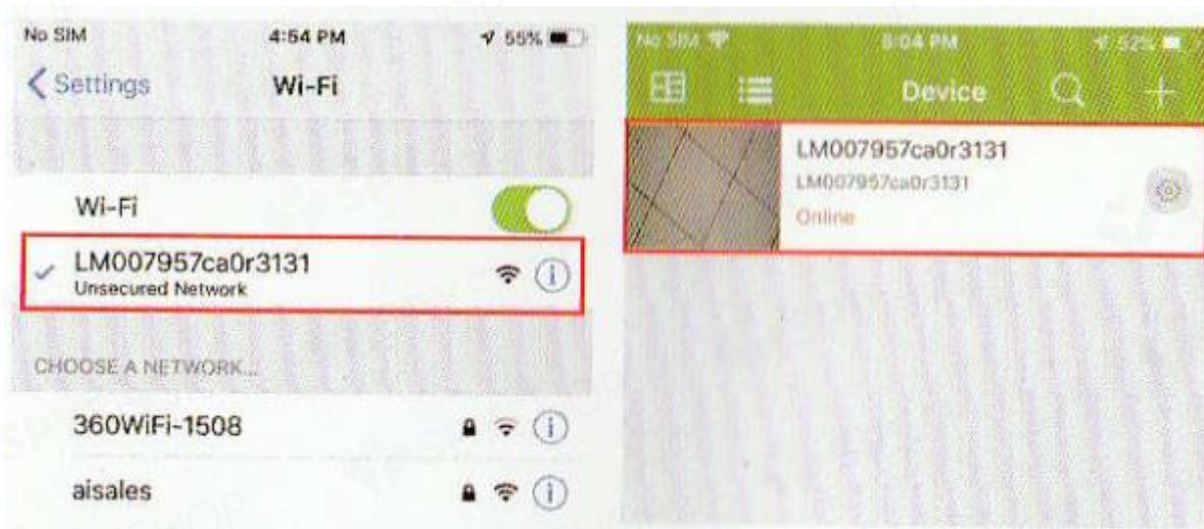
Mai apoi, conecteaza dispozitivul la o sursa de alimentare si asteapta 1 minut pentru a porni.

Stabileste conexiunea WiFi.

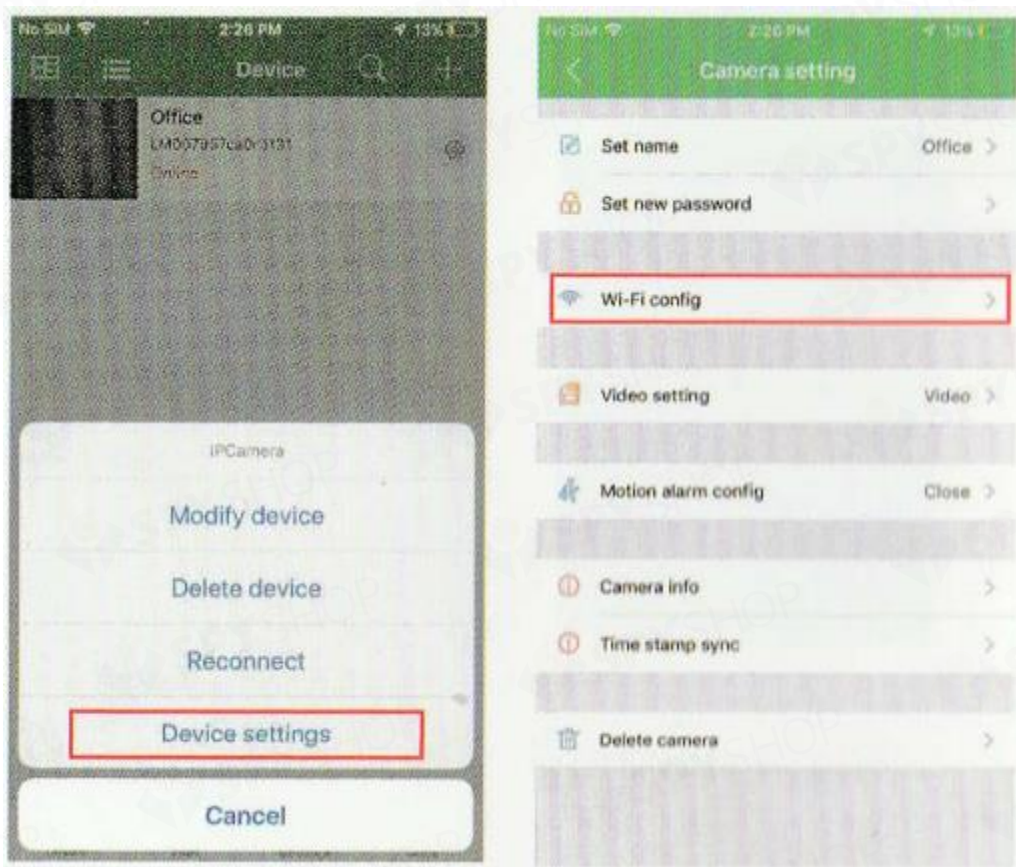
Deschide smartphone-ul, intra in setarile de retea, cauta si conecteaza-te la reseaua aplicatiei care se numeste **“AI/LM...”**.



Intra in aplicatie si camera va fi adaugata automat; acest pas este considerat modul P2P de vizualizare a imaginilor fara conexiune WiFi.



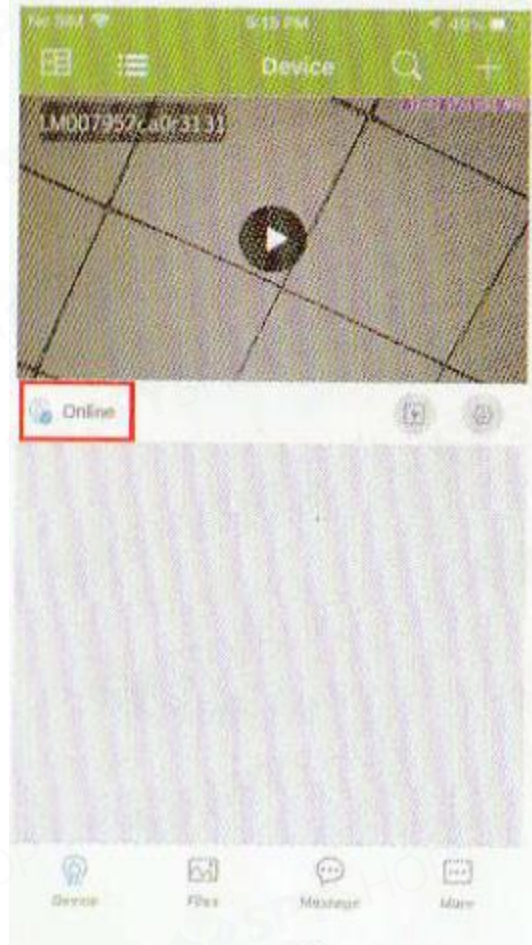
Apasa pictograma de setari din aplicatie, selecteaza Other Config si apoi WiFi Config.



Selecteaza retea ta WiFi, introdu parola si conecteaza-te cu smartphone-ul. Acesta se va deconecta de la retea aplicatiei si va trece pe cea selectata de tine.

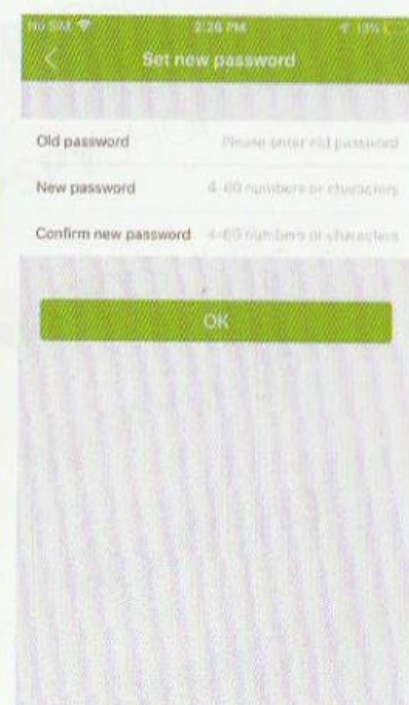
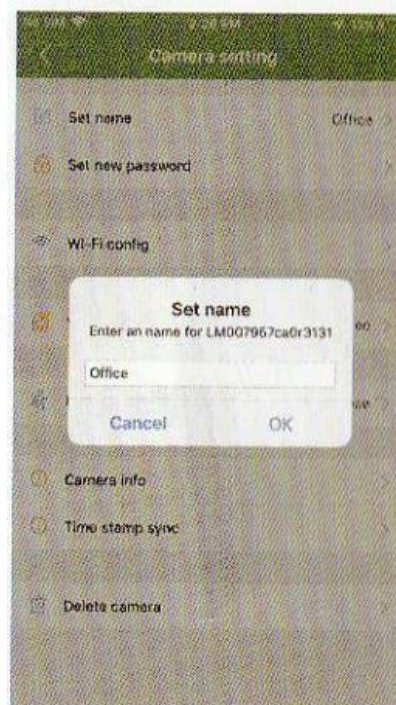
In acest moment iesi din aplicatie si asteapta 30 de secunde pentru ca dispozitivul sa reporneasca.

Acum poti intra in aplicatie si poti accesa fluxul video oricand si oricum

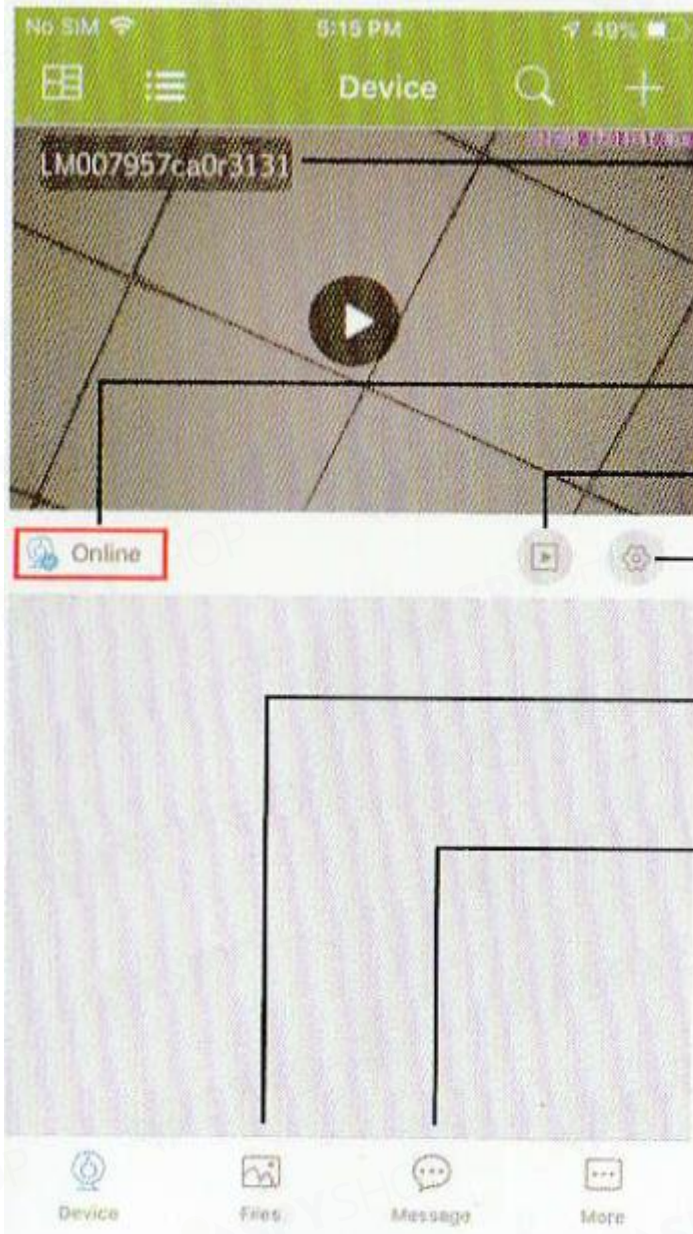


- **Setare nume si parola**

- Setare nume: apasa pictograma setarilor, selecteaza Set name si introdu un nou nume camerei.
- Setare parola: apasa pictograma setarilor, selecteaza Set new password si introdu o parola noua camerei.



Aplicatia mobila



Nume/UID camera

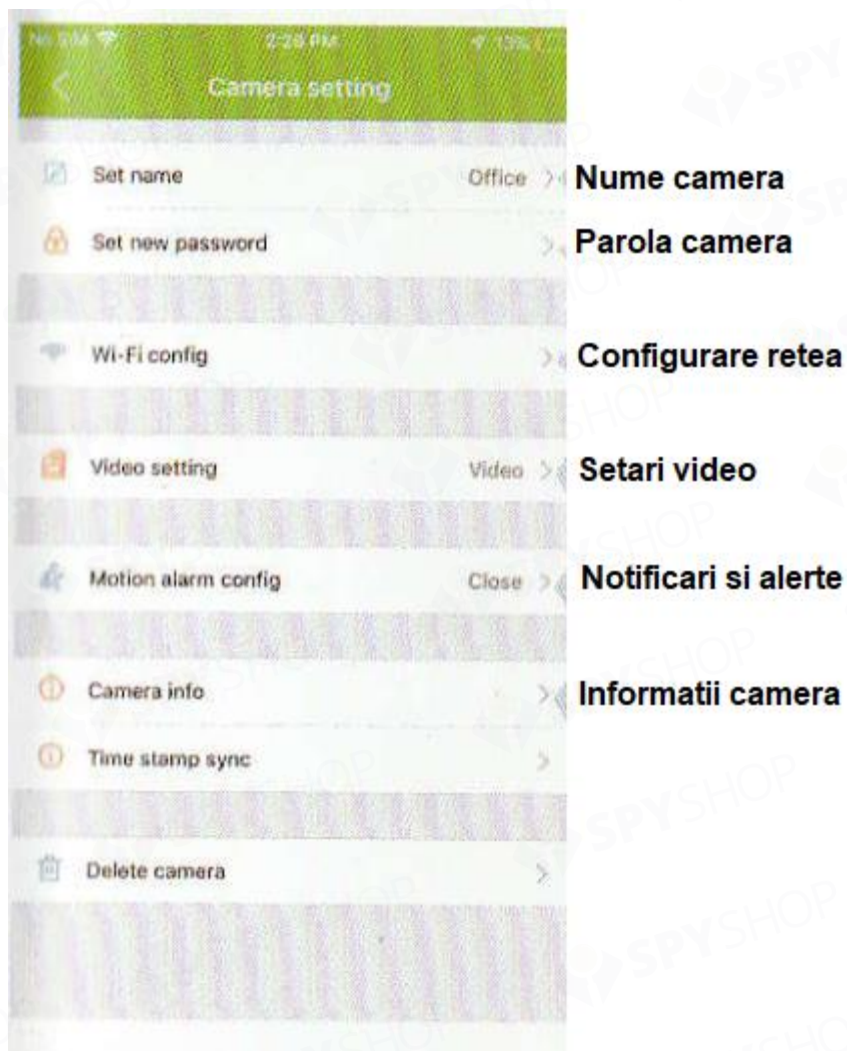
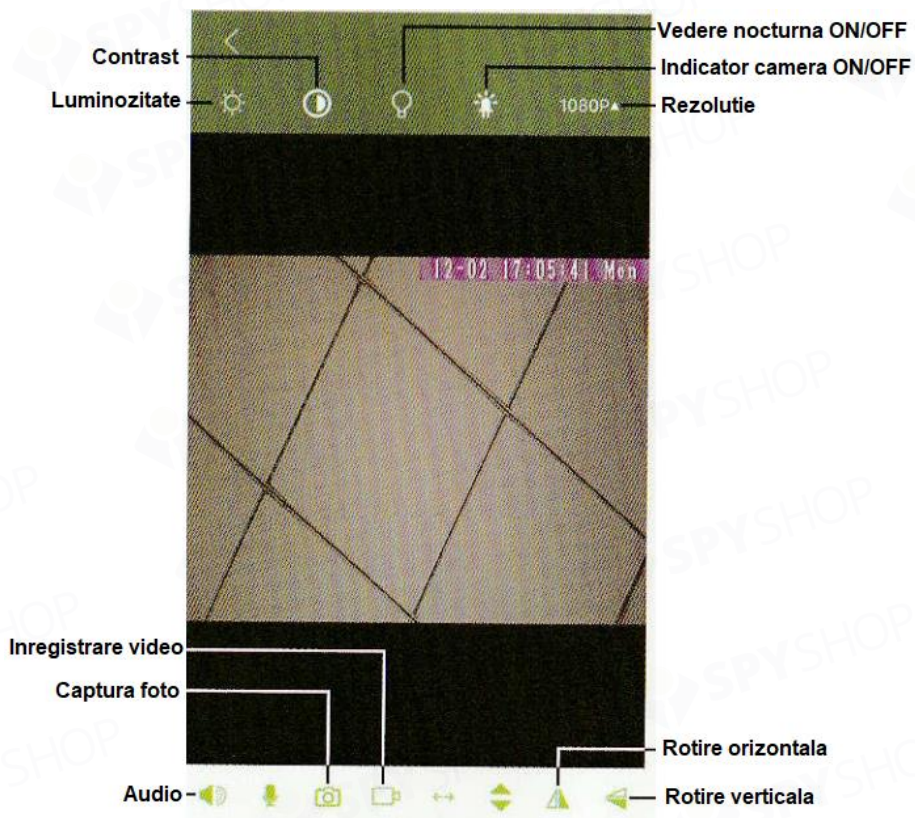
Status camera

Video pe cardul de memorie

Setari camera

Fisiere: foto si video inregistrate

Notificari si alerte pe baza detectiei miscarii



SPECIFICATII TEHNICE

Senzor	1.0 / 2.0 Mega CMOS
Rezolutie	Max 1920*1080
Rata de cadre	Max 25fps
Compresie	H.264
Unghi de vizualizare	90°
Tip card de memorie	TF, clasa 4/10, marcat HC
Capacitate maxima card	128GB
Sistem de operare PC	Windows 7, 8 / MAC OS X
Software redare	VLC Player / SM Player
Sistem de operare smartphone	Android / iOS
Browser web	IE 7 sau mai mare, Chrome, Firefox
Consum	300mA / 3.7V
Inregistrare	1 minut / 20MB
Adaptor alimentare	5V 2A