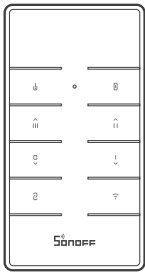


SONOFF

RM433R2

Quick User Guide V1.1

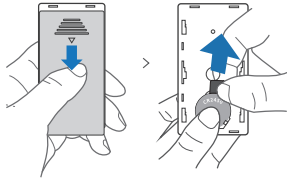


433MHz Remote Controller

CN > EN > DE > ES > FR > IT > RU > PT

取出电池绝缘片

Pull out the battery insulation sheet
Ziehen Sie die Batterieisierungsfolie heraus
Retire la lámina de aislamiento de la batería
Retirez la feuille d'isolation de la batterie
Rimuovere il foglio di isolamento della batteria
Снимите изоляционный лист батареи
Retire a plástico de isolamento da bateria



1

设备分带电池和不带电池版本。

The device has the version with battery and without battery.
Das Gerät ist in der Version mit Batterie und ohne Batterie verfügbar.
El dispositivo viene en el diseño con batería y sin batería. Cet appareil existe en deux versions, à savoir avec batterie et sans batterie.
Il dispositivo possiede la versione con batteria e senza batteria.
Устройство имеет версию с батареей и без батареей.
O aparelho possui a versão com bateria e sem bateria.

产品介绍

Product Introduction
Produktvorstellung
Introducción al producto
Présentation du produit
Introduzione al prodotto
Знакомство с изделием
Introdução ao produto

RM433R2适用于带433MHz遥控功能的SONOFF产品, 以及支持433MHz通讯协议的其他设备。
The RM433R2 applies to all SONOFF products with 433MHz frequency and other devices supporting the 433MHz communication protocol.
Der RM433R2 ist für alle SONOFF-Geräte mit 433 MHz Frequenz und andere Geräte gedacht, die das 433 MHz Kommunikationsprotokoll unterstützen.
El RM433R2 se utiliza con todos los productos SONOFF con 433 MHz de frecuencia y otros dispositivos que admitan el protocolo de comunicación de 433 MHz.
La RM433R2 s'aplique à tous les produits SONOFF utilisant la fréquence de 433 MHz ainsi qu'aux autres appareils supportant le protocole de communications 433 MHz.
L'RM433R2 è applicabile a tutti i prodotti SONOFF aventi una frequenza di 433 MHz e ad altri dispositivi che supportano il protocollo di comunicazione 433 MHz.
Model RM433R2 совместима со всеми продуктами SONOFF с частотой 433 МГц и другими устройствами, поддерживающими протокол обмена данными 433 МГц.
O RM433R2 se aplica a todos os produtos SONOFF com frequência 433MHz e outros dispositivos que suportam o protocolo de comunicação 433MHz.

2

3

与不同的设备配对使用时, 每个按键对应的功能不同。
Buttons are created with different functions when pairing with different products.
Die Tasten erhalten bei der Kopplung mit unterschiedlichen Produkten unterschiedliche Funktionen.
Los botones reciben distintas funciones al emparejarlos con productos distintos.
Les boutons sont créés avec différentes fonctions lors du jumelage avec différents produits.
I pulsanti sono definiti in base alle diverse funzioni quando si accoppiano con prodotti differenti.
При сопряжении с различными продуктами используются кнопки с различными функциями.
Os botões são criados com diferentes funções ao emparelhar com diferentes produtos.

适配 SONOFF 设备

Works with SONOFF devices
Funktioniert mit SONOFF-Geräten
Funciona con los dispositivos SONOFF
Fonctionne avec les appareils SONOFF
Compatibili con i dispositivi SONOFF
Поддерживаемые устройства SONOFF
Funciona com dispositivos SONOFF

- FRF2
- BASICRF3
- Slampher2
- 4CHPRO3
- RF Bridge2
- D1
- TX(EU/UK/US)
- IFan03

3

RM433R2-BASE: 安装方法

RM433R2-BASE: Installation methods
RM433R2-BASE: Installationsmethoden
RM433R2-BASE: Métodos de instalación
RM433R2-BASE: Méthodes d'installation
RM433R2-BASE: Metodi di installazione
RM433R2-BASE: Способы установки
RM433R2-BASE: Métodos de instalação

4

本产品不提供底座, 请单独购买。
The base is not included into the package, please purchase it separately.
Die Basis ist nicht im Lieferumfang enthalten, bitte separat erwerben.
La base no está incluida en el paquete y se debe adquirir por separado.
La base n'est pas incluse dans l'emballage, veuillez l'acheter séparément.
La base non è inclusa nella confezione, da acquistare separatamente.
База не входит в комплект поставки, необходимо приобрести ее отдельно.
A base não está incluída no pacote; please adquira-o separadamente.

4

LIKE IT!

Glad to know you are satisfied with SONOFF products.

It would mean a lot to us if you can take a minute to share your buying experience.



Share it on Amazon



Share it on your social media



Share it with your friends and family

Get the latest news by following us:
New arrival
Promotion
How-to videos

HAVE A PROBLEM?

We are so sorry for the inconvenience caused by the product.
Please contact us for help via the email address below.

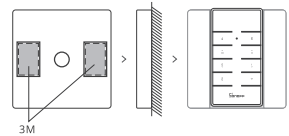


support@itead.cc

We will get back to you as soon as possible.



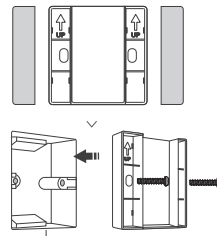
1



可直接用3M胶贴在遥控器底座背面两边安装。
Install the base on the wall with 3M adhesive tapes.
Montieren Sie die Basis an der Wand mit 3M-Klebebändern.
Installe la base en la pared con las cintas adhesivas 3M.
Installez la base sur le mur avec des bandes adhésives 3M.
Installare la base a parete utilizzando nastri adesivi 3M.
Установите базу на стену с помощью клейкой ленты 3M.
Instale a base na parede com fitas adesivas da 3M.

5

2



拆下取遥控器底座两边的盖子, 用螺丝安装底座。
Remove the two upper covers from both sides of the base to install with screws.
Entfernen Sie die beiden oberen Abdeckungen von beiden Seiten der Basis, um sie mit Schrauben zu befestigen.
Quite las dos tapas superiores de ambos lados de la base para realizar la instalación con tornillos.
Retirez les deux couvercles supérieurs des deux côtés de la base pour l'installer avec des vis.
Rimuovere le due protezioni superiori da entrambi i lati della base per il montaggio da effettuare utilizzando le apposite viti.
Снимите две верхние крышки с обеих сторон базы для выполнения установки с использованием винтов.
Remova as duas tampas superiores de ambos os lados da base para instalar com parafusos.

6

User Manual



Https://sonoff.tech/usermanuals

扫码或输入网址查看产品详细的说明书和帮助。
Scan the QR code or visit the website to learn about the detailed user manual and help.
Scannen Sie den QR-Code oder besuchen Sie die Website um auf die detaillierte Bedienungsanleitung zuzugreifen und Hilfe.
Escanee el código QR o visite el sitio web para consultar la guía del usuario detallada y ayuda.
Scannez le code QR ou visitez le site web pour consulter le guide détaillé et aide.
Scansionare il codice QR o visita il sito web per consultare la guida utente dettagliata e aiuto.
Сканируйте этот QR-код или перейдите на наш веб-сайт для просмотра подробного руководства пользователя и помощи.
Scaneeie o código QR ou visite o nosso website para consultar detalhadamente o guia do usuário e ajuda.

7

FCC Warning

Changes or modifications not expressly approved by the party responsible for compliance could avoid the user's authority to operate the equipment.
This device complies with part 15 of the FCC Rules. Operation is subject to the following two conditions: (1) This device may not cause harmful interference, and (2) this device must accept any interference received, including interference that may cause undesired operation.

FCC Radiation Exposure Statement:
This equipment complies with FCC radiation exposure limits set forth for an uncontrolled environment. This equipment should be installed and operated with minimum distance 20cm between the radiator & your body. This transmitter must not be co-located or operating in conjunction with any other antenna or transmitter.
Note:
This equipment has been tested and found to comply with the limits for a Class B digital device, pursuant to part 15 of the FCC Rules. These limits are designed to provide reasonable protection against harmful interference in a residential installation. This equipment generates, uses and can radiate radio frequency energy and, if not installed and used in accordance with the instructions, may cause harmful interference to radio communications. However, there is no guarantee that interference will not occur in a particular installation. If this equipment does cause harmful interference to radio or television reception, which can be determined by turning the equipment off and on, the user is encouraged to try to correct the interference by one or more of the following measures:
— Reorient or relocate the receiving antenna.
— Increase the separation between the equipment and receiver.
— Connect the equipment into an outlet on a circuit different from that to which the receiver is connected.
— Consult the dealer or an experienced radio/TV technician for help.

8

Hereby, Shenzhen Sonoff Technologies Co., Ltd. declares that the radio equipment type RM433R2 is in compliance with Directive 2014/53/EU. The full text of the EU declaration of conformity is available at the following internet address:
<https://sonoff.tech/usermanuals>



Shenzhen Sonoff Technologies Co., Ltd.
1001, BLDG8, Lianhua Industrial Park, shenzhen, GD, China
ZIP code: 518000 Website: sonoff.tech
MADE IN CHINA



9

品牌	松诺/SONOFF
物料	快速指南 RM433R2 V1.1
材料	105g铜板 四色印刷 手风琴6折页
尺寸	展开: 252x80mm 折后: 42x80mm
日期	2021.02.28