

FW2 KP-ICON

2WAY WIRELESS
USER CONTROL KEYPAD

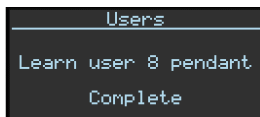


ELECTRONIC ENGINEERING LTD.

INSTALLATION & PROGRAMMING INSTRUCTIONS

KEYPAD LEARNING WITH SERENITY PANEL

- Insert at least one battery to the back side of the FW2-KP ICON and wait until LED turn off.
- On Serenity panel, Enter to **installer programming mode** (P>>installer code>>E).
- Go to **learn user pendant** level (P27E)
- Select the required **user pendant number** for learning (use +/- keys).
- Press the enter key to start the learning process, beeps sound will be heard
- Press any key on the FW2-KP ICON and verify "**complete**" message on the control panel display



SOUND INDICATIONS

When the keypad is used to activate or deactivate the different functions it emits different audible beeps.

Sound	Description
Long beep	Played when correct system status is set following user keypad entry, successful programming action, program mode entry/exit.
3 short beeps	Played when system status is not set following user keypad entry, wrong PIN code entry, unsuccessful attempt to enter programming mode.

CHANGE/ADD RFID TAG ID

The RFID Tag may be changed or added only while Keypad is in Programming mode.

Up to 8 RFID Tags may be set for keypad. The RFID Tag IDs are saved and ready after every Keypad power up.

How to modify RFID Tag #1 (user 1):

Press key **1** and approach tag to

The 1 second duration tone is played on code add/change.

FW2 KP-ICON DESCRIPTION



The FW2-KP ICON is a Crow 2-way wireless keypad working with the Serenity family control panel. It includes built-in proximity RFID tag reader and several buttons.

ACCESS TAG LEARNING WITH FW2-KP ICON

The RFID Tag may be changed or added only while Keypad is in Programming mode.

Up to 8 RFID Tags may be set for keypad. The RFID Tag IDs are saved and ready after every Keypad power up.

Learning process:

- On FW2-KP ICON, press the key "C"
- Enter the programming code (by default 0000)
- The "tool" LED indication is turning on
- Select the required user by pressing its dedicated number on the keypad (example: press the key "1" for the user 1, the key "2" for user 2...)
- Approach the access tag in front of the FW2-KP ICON logo to learn the user access tag.
- Verify beep and back light from FW2-KP ICON
- Press the "C" key for 5 seconds to exit from the programming mode.

FW2-KP ICON PROGRAMMING MODE

ENTER PROGRAMMING MODE

C Button + Enter Master Code

The default Master code is: 0000

The 1 second duration tone is played on programming entry.

EXIT PROGRAMMING MODE

Any Button long press or wait 20 seconds.

CHANGE MASTER CODE

The master code may be changed only while keypad is in programming mode.

Press **0** (zero) Button + new 4 digits Master code

The 1 second duration tone is played on code change.

DELETE USER CODE / ACCESS TAG

DELETE USER CODE

Press User Code serial number + **C**

Example of delete User Code #1:

Press button **1** + **C**

The 1 second duration tone is played on code add/change.

DELETE USER ACCESS TAG

Press Tag ID serial number + touch

Example of delete Tag ID 1:

1 + touch

The 1 second duration tone is played on code change.

CONTROL KEYPAD FEATURES

- Crow 2-way wireless keypad working with the Serenity family control panel.
- Numerical keypad
- Built in proximity RFID tag reader.
- Lithium battery powered
- Range up to 500m on open space.
- Multi function: ARM, DISARM, Initiating of Panic Alarms.
- Add/Change of User code and/or user tags
- Status, trouble and beep ready/Not-ready indications
- Low battery report
- Back light
- Wall mounted or can be used as a portable unit.
- 1 Master code for program mode entry
- Up to 8 User Codes may be add/changed
- Up to 8 RFID tags may be add/changed while in programming mode
- Confirmation tone (long beep)
- Error tone (3 short beeps)

KEYPAD FUNCTIONS MANIPULATION

SYSTEM ARM

Button + Enter User code

Button + Approach Tag to

SYSTEM HOME ARM

Button + Enter User Code

Button + Approach Tag to

SYSTEM DISARM

Enter User Code or Approach Tag to

SYSTEM PANIC

Press both **SOS** Buttons Simultaneously

CHANGE/ADD USER CODE

The User Code may be changed or added only while Keypad is in Programming mode.

Up to 8 User Codes may be set for keypad.

The User Code 1 default is 1234. The next 7 User codes are black.

Example of change User Code #1:

1. Enter in programming mode
2. Press key "1" + new 4 digits user code
3. The 1 second duration tone is played on code add/change.

FACTORY DEFAULTS

You can reset your FW2-KP ICON to factory defaults.

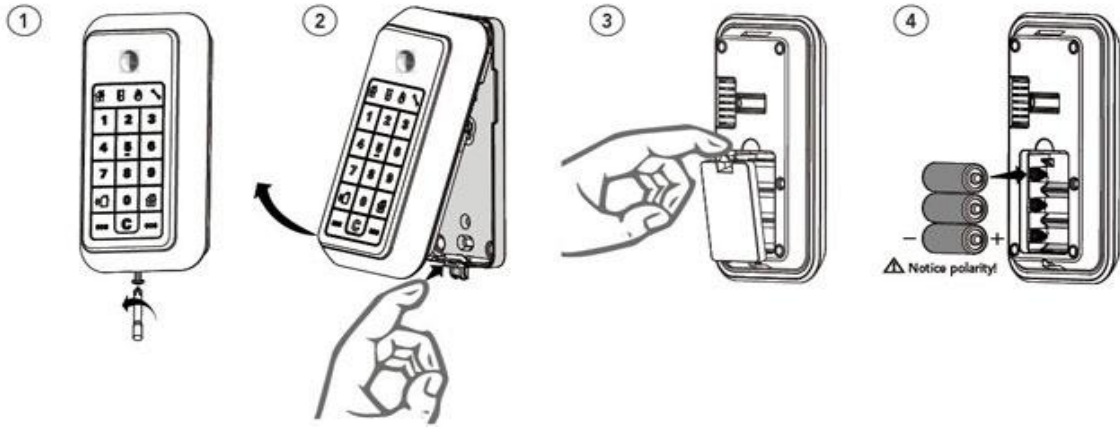
Attention!!!
this procedure erases all data
(user codes and tags)

To reset FW2-KP ICON to factory defaults:

Enter the programming mode by pressing on "C" key Button + Enter Master Code

Long press both **SOS** keys until the "tool" Indication LED turns off.

INSTALLATION

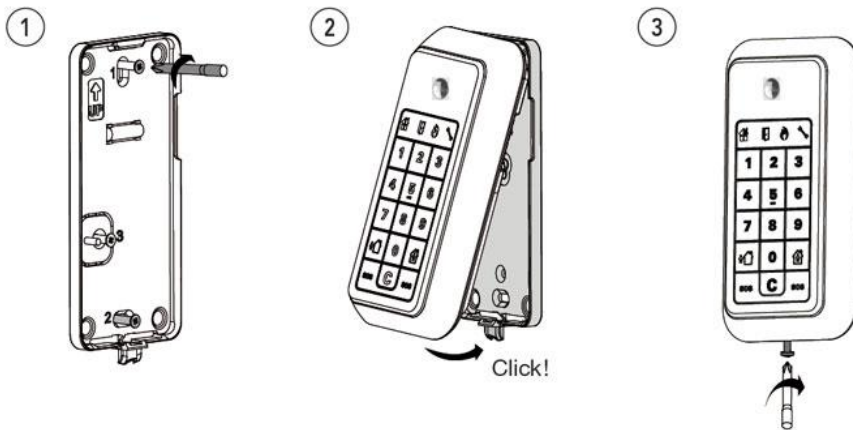


1

14

15

WALL MOUNTING



16

17

CAUTION!!!

RISK OF EXPLOSION IF BATTERY IS REPLACED BY DIFFERENT TYPE / MODEL.

DISPOSE USED BATTERIES ACCORDING TO ITS INSTRUCTIONS

The battery must be replaced by 3V Lithium battery Size 2/3A Models such as:

1. VARTA CR123A
2. GP CR123A

CROW ELECTRONIC ENGINEERING LTD. ("Crow") - WARRANTY POLICY CERTIFICATE

This Warranty Certificate is given in favor of the purchaser (hereunder the "Purchaser") purchasing the products directly from Crow or from its authorized distributor.

Crow warrants these products to be free from defects in materials and workmanship under normal use and service for a period of 24 months from the last day of the week and year whose numbers are printed on the printed circuit board inside these products (hereunder the "Warranty Period").

Subject to the provisions of this Warranty Certificate, during the Warranty Period, Crow undertakes, at its sole discretion and subject to Crow's procedures, as such procedures are from time to time, to repair or replace, free of charge for materials and/or labor, products proved to be defective in materials or workmanship under normal use and service. Repaired products shall be warranted for the remainder of the original Warranty Period.

All transportation costs and in-transit risk of loss or damage related, directly or indirectly, to products returned to Crow for repair or replacement shall be borne solely by the Purchaser.

Crow's warranty under this Warranty Certificate does not cover products that is defective (or shall become defective) due to: (a) alteration of the products (or any part thereof) by anyone other than Crow; (b) accident, abuse, negligence, or improper maintenance; (c) failure caused by a product which Crow did not provide; (d) failure caused by software or hardware which Crow did not provide; (e) use or storage other than in accordance with Crow's specified operating and storage instructions. There are no warranties, expressed or implied, of merchantability or fitness of the products for a particular purpose or otherwise, which extend beyond the description on the face hereof.

This limited Warranty Certificate is the Purchaser's sole and exclusive remedy against Crow and Crow's sole and exclusive liability toward the Purchaser in connection with the products, including without limitation - for defects or malfunctions of the products. This Warranty Certificate replaces all other warranties and liabilities, whether oral, written, (non-mandatory) statutory, contractual, in tort or otherwise.

In no case shall Crow be liable to anyone for any consequential or incidental damages (inclusive of loss of profit, and whether occasioned by negligence of the Crow or any third party on its behalf) for breach of this or any other warranty, expressed or implied, or upon any other basis of liability whatsoever. Crow does not represent that these products cannot be compromised or circumvented; that these products will prevent any person injury or property loss or damage by burglary, robbery, fire or otherwise; or that these products will in all cases provide adequate warning or protection.

Purchaser understands that a properly installed and maintained product may in some cases reduce the risk of burglary, fire, robbery or other events occurring without providing an alarm, but it is not insurance or a guarantee that such will not occur or that there will be no personal injury or property loss or damage as a result.

Consequently, Crow shall have no liability for any personal injury; property damage or any other loss based on claim that these products failed to give any warning.

If Crow is held liable, whether directly or indirectly, for any loss or damage with regards to these products, regardless of cause or origin, Crow's maximum liability shall not in any case exceed the purchase price of these products, which shall be the complete and exclusive remedy against Crow.



12 Kineret St.
Airport City, 70100 Israel

Tel. +972 3 9726000
Fax. +972 3 9726001

sales@crow.co.il
support@crow.co.il

www.thecrowgroup.com

These instructions supersede all previous issues in circulation prior to November 2013.