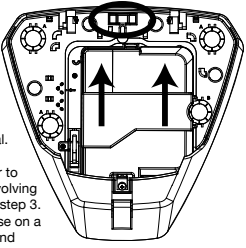




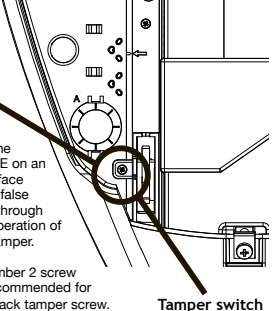
**Installation Steps: Step 1**

Slide the PCB module upwards. The sprung back-tamper arm can be retracted to allow removal. This must be done in order to install the revolving guides - see step 3. Place the base on a flat surface and ensure it is vertical using the spirit level that is already installed. Drill and plug in each of the fixing locations. The revolving guides will correct any misalignment. If the Deltabell WE must be mounted on an uneven surface, it is recommended that a tamper levelling screw is used to ensure correct back-tamper operation. See step 2.



**Step 2**

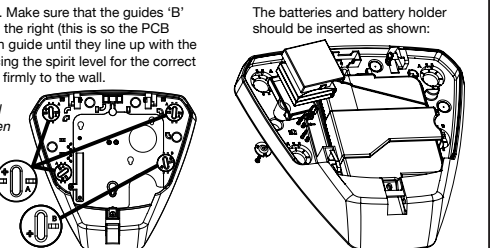
**Tamper levelling screw**  
Mounting the Deltabell WE on an uneven surface may cause false triggering, through incorrect operation of the back-tamper.  
A POZI number 2 screw driver is recommended for adjusting back tamper screw.  
NOTE: This is for wall mounting only.



**Step 3**

Insert the guides as shown. Make sure that the guides 'B' are aligned with the tabs to the right (this is so the PCB module slides in). Turn each guide until they line up with the drilled holes, while referencing the spirit level for the correct alignment, and fix the base firmly to the wall.

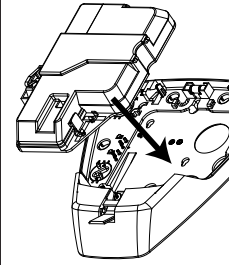
*Please note, if the Deltabell WE is installed on an uneven surface, it is recommended that you do not tighten up the wall screws until after the module is installed (step 4)*



**NOTE: Older Deltabell products were supplied with a single cylindrical battery type (1x BATT-CR34615D) instead of the two square batteries (2x BATT-ES1) in the current product. The different battery types are NOT INTERCHANGEABLE between products. Replace like with like under all circumstances.**

**Step 4**

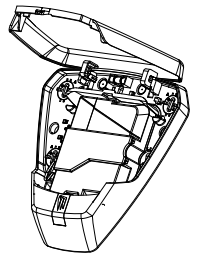
Place the PCB module, ensuring that the arrow is aligned with the marker (on the left of the module). Expose the terminals by releasing the latch on the top of the PCB module.



NOTE: The bottom battery holder should be installed as shown - in order to allow to installation or removal of the Deltabell Module.

**Step 5**

Fit the lid by sliding its hinges into place. The lid can be supported in the fully open position. To close the lid, apply a little force to push the lid past the holds.



Close the cover, ensure the tamper is operating correctly, insert the 25mm long screw supplied and rotate the screw cover to a close.

\*Lid sold separately

**Learning the DELTABELL-WE onto the Control Panel**

When you are ready to learn the device to the control panel receiving equipment, and when the equipment is in the learn mode (see the Control Panel Programming Manual) follow the procedure below.

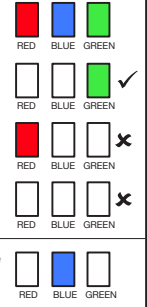
The three coloured LEDs give a visual indication of the signal strength.

Green indicates good signal strength and is a good location to install.

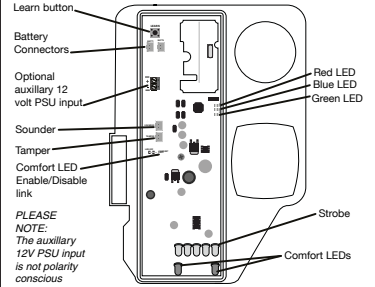
Red indicates poor signal strength and the device should not be installed in that position.

If no LED illuminates then the device is completely out of range.

The blue LED will illuminate when the device is activated.

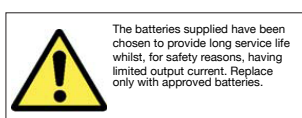


**Printed Circuit Board**



PLEASE NOTE: The auxiliary 12V PSU input is not polarity conscious

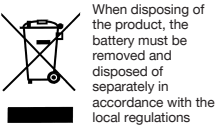
**Battery**



The batteries supplied have been chosen to provide long service life whilst, for safety reasons, having limited output current. Replace only with approved batteries.

To prevent possible damage to components, any static charge on your body needs to be eliminated before touching the inside of the unit. This can be accomplished by touching some grounded/earthed metallic conductor such as a radiator/pipework immediately before replacing batteries.

For electrical products sold within the European Community. At the end of the electrical products life, it should not be disposed of with household waste. Please recycle where facilities exist. Check with your Local Authority or retailer for recycling advice in your country.



**Technical Specification**

**Low voltage Threshold:**  
Batt1: 2.2V +/-5% at 25 C,  
Batt2: 2.5V +/-5% at 25 C  
**Batteries:** 2x 3V 5Ahr  
Lithium battery packs (BATT-ES1)  
**Acoustic output:** Tone.  
**Strobe duration:** 10ms  
**Strobe Frequency:** 1Hz  
**Sound pressure level:** 101dB(A)  
**Max sound duration:** 15 mins  
**Dimensions:** 290 x 285 x 50 mm  
**Selectable comfort LEDs:**  
4 second flash rate  
**Operation from external PSU (optional):**  
11V to 14V  
**IMPORTANT NOTE:** The batteries should still be connected if using an external PSU.  
Case Tamper: Reverse polarity protected

**Warranty and compliance**

**WARRANTY:** This product is sold subject to our standard warranty against defects in workmanship for a period of two years (batteries excluded). Please note: In positions where the Deltabell WE casing is subjected to high levels of U.V. sunlight, there may be risk of case colour fading, this is not covered by the warranty. In the interest of continuing improvement of quality, customer care and design, Pyronix Ltd reserve the right to amend specifications without giving prior notice.

Pyronix Ltd, Braithwell Way, Hellaby, Rotherham, South Yorkshire, S66 8QY  
Customer support: +44(0)845 6434 999 (local rate) or +44(0)1709 535225  
Hours: Mon to Fri, 8.00am till 6:30pm  
Email: customer.support@pyronix.com  
Website: www.pyronix.com

