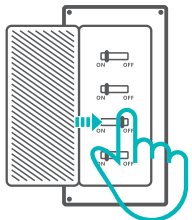


Wi-Fi Smart Switch  
Model: BASICR2  
Model: RFR2

①

**断电**  
Power off  
Ausschalten  
Apagado  
Éteindre  
Spegnimento  
Выключить  
Desligar



⚠️ 设备安装、故障维修请由专业资质电工操作，以免发生触电危险！设备在正常使用的情况下不可拆卸到。  
To avoid electric shocks, please contact the dealer or a qualified professional for help when installing and repairing! Please do not touch the switch during use.  
Wenden Sie sich bitte an den Händler oder einen qualifizierten Fachmann, um Hilfe bei der Installation und Reparatur zu erhalten und um Stromschläge zu vermeiden! Bitte berühren Sie den Schalter nicht während des Betriebs nicht.

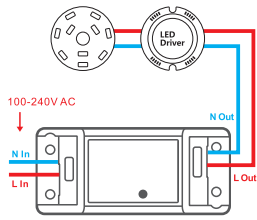
Para evitar descargas eléctricas, consulte con su distribuidor o un profesional cualificado para solicitar ayuda durante la instalación y la reparación! No toque el interruptor durante el uso.  
Pour éviter les électrocutions, prenez contact avec le revendeur ou un professionnel qualifié pour obtenir de l'aide pour l'installation et les réparations éventuelles! Veuillez ne pas toucher l'interrupteur pendant l'utilisation.  
Per evitare scosse elettriche, consultate il rivenditore o un professionista qualificato per assistenza durante l'installazione e la riparazione! Non toccare l'interruttore durante l'uso.  
Во избежание поражения электрическим током при установке и ремонте обращайтесь за консультациями к продавцу или квалифицированному специалисту! Не касайтесь переключателя во время использования.  
Para evitar choques eléctricos, por favor consulte a seu distribuidor ou um profissional qualificado para auxiliar na instalação e reparo. Por favor não toque no painel durante o uso.

②

**接线**  
Wiring instruction  
Verkabelungsanleitung  
Instrucciones de cableado  
Instructions de câblage  
Istruzioni per il cablaggio  
Инструкции по проводке  
Instruções de instalação

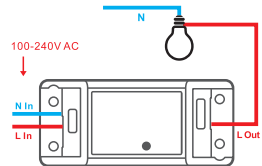
吸顶灯接线示意图  
Ceiling lamp wiring instruction

Make sure the neutral wire and live wire connection is correct.  
Vergewissern Sie sich, dass der Anschluss von Neutralleiter und stromführender Phase korrekt sind. Compruebe que las conexiones del cable neutro y activo sean correctas. Assurez-vous que le fil neutre et le fil sous tension sont correctement installés. Assicurarsi che il collegamento del cavo di neutro e del cavo di fase sia corretto. Убедитесь, что провод нейтрали (ноль) и провод под напряжением (фаза) подключены правильно. Certifique-se de que os cabos neutro e fase estejam conectados corretamente.



单火线输出接线示意图  
One live wire wiring instruction

Verkabelung mit einer Stromführenden  
Instrucciones de cableado con un solo cable activo  
Instructions pour le câblage du fil sous tension  
Istruzioni per il cablaggio con un solo cavo di fase  
Инструкции по проводке: один провод под напряжением  
Instruções para instrução de fiação de fio único (fase)

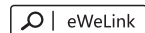


①

確保零火线接入无误。  
Make sure the neutral wire and live wire connection is correct.  
Vergewissern Sie sich, dass der Anschluss von Neutralleiter und stromführender Phase korrekt sind. Compruebe que las conexiones del cable neutro y activo sean correctas. Assurez-vous que le fil neutre et le fil sous tension sont correctement installés. Assicurarsi che il collegamento del cavo di neutro e del cavo di fase sia corretto. Убедитесь, что провод нейтрали (ноль) и провод под напряжением (фаза) подключены правильно. Certifique-se de que os cabos neutro e fase estejam conectados corretamente.

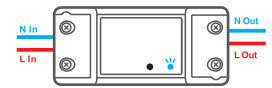
③

**下载APP**  
Download APP  
APP herunterladen  
Descargar la aplicación  
Télécharger l'application  
Scarica la APP  
Скачать приложение  
Baixar o aplicativo



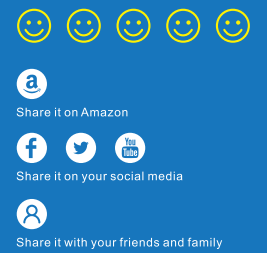
④

**上电**  
Power on  
Einschalten  
Encender  
Allumer  
Accensione  
Включить  
Ligue



通电后，设备首次使用，默认进入快速配网模式 (Touch)。Wi-Fi指示灯呈“两短一长”闪烁。  
After powering on, the device will enter the quick pairing mode (Touch) during the first use. The Wi-Fi LED indicator changes in a cycle of two short and one long flash and release.  
Nach dem Einschalten wechselt das Gerät bei der ersten Inbetriebnahme in den Schnellkopplungsmodus (Touch). Die WLAN-LED-Anzeige zu einem Intervall von „zweimalig kurzen Blinken und einem langen Blinken“ wechselt.  
Después de encender, el dispositivo se pondrá en modo de emparejamiento rápido (Touch) durante el primer uso. El indicador LED de Wi-Fi cambia a "un ciclo de dos parpadeos cortos y uno largo".  
Após a ligação, o aparelho entra em modo de associação rápida (Touch) lors de l'utilisation initiale. Que l'indicateur DEL Wi-Fi clignote « deux fois rapidement puis une fois rapidement ».

**LIKE IT!**  
Glad to know you are satisfied with SONOFF products. It would mean a lot to us if you can take a minute to share your buying experience.



Get the latest news by following us:  
**New arrival Promotion**  
**How-to videos**

**HAVE A PROBLEM?**

We are so sorry for the inconvenience caused by the product. Please contact us for help via the email address below.



support@itead.cc

We will get back to you as soon as possible.



Dopo l'accensione, il dispositivo entrerà nella modalità di accoppiamento (Touch) durante il primo utilizzo. L'indicatore LED del Wi-Fi passa a "un ciclo di due lampeggi brevi e uno lungo".  
После первого включения устройство перейдет в режим быстрого сопряжения. Светодиодный индикатор Wi-Fi начнет мигать в режиме «два раза коротко, один раз длинно».  
Após ligar o aparelho entrará em modo de pareamento (Touch) durante o primeiro uso. O indicador LED Wi-Fi mudará para um ciclo de dois flashes curtos e um longo.  
El dispositivo saldrá del modo de emparejamiento rápido (Touch) si no se ha emparejado al cabo de 3 minutos. Si necesita volver a ese modo, mantenga presionado el botón de configuración 5 segundos hasta que el LED Indicador de Wi-Fi cambie a un ciclo de dos parpadeos cortos y uno largo. A continuación, suelte el botón.

①

三分钟内没有进行配网，设备将退出快速模式。如需再次进入，长按手动开关键5秒直到Wi-Fi指示灯呈两短一长闪烁即可。  
The device will exit the quick pairing mode (Touch) if not paired within 3mins. If you want to enter this mode, please long press the manual button for about 5s until the Wi-Fi LED indicator changes in a cycle of two short and one long flash and release.  
Das Gerät beendet den Schnellkopplungsmodus (Touch), wenn innerhalb von 3 Minuten keine Kopplung erfolgt. Wenn der Schnellkopplungsmodus erneut aufgerufen werden soll, drücken Sie bitte Konfigurationstaste 5 Sekunden, bis die WLAN-LED-Anzeige zu einem Intervall von zweimaligem kurzen Blinken und einem langen Blinken wechselt und lassen Sie erst dann die Taste los.  
O aparelho irá sair do modo de pareamento se a conexão com o Wi-Fi não for feita em até 3 minutos. Se você quiser entrar nesse modo, por favor pressione botão 5 s até que o indicador LED do Wi-Fi mude para um ciclo de dois flashes curtos e um longo em seguida solte.  
Устройство выйдет из режима быстрого сопряжения (Touch), если сопряжение не будет выполнено в течение 3 минут. Если нужно войти снова, нажмите и удерживайте кнопку конфигурации 5 секунд, пока индикатор Wi-Fi не изменится по очереди на два коротких и одно длинное мигание, затем отпустите.  
Tippen Sie auf „+“, wählen Sie „Quick Pairing“ und arbeiten Sie dann gemäß der Aufforderung auf der APP.  
Tapez sur « + » et sélectionnez « Quick Pairing », puis suivez l'invite sur l'application.  
Toccare « + » e selezionare « Quick Pairing », quindi procedere seguendo le indicazioni dell'APP.  
Коснитесь «+» и выберите «Quick Pairing», затем выполняйте действия после появления подсказки в приложении.  
Toque «+» e seleccione «Quick Pairing» então prossiga seguindo as instruções do aplicativo.

⑤

**添加设备**  
Add the device  
Gerät hinzufügen  
Añadir el dispositivo  
Ajouter l'appareil  
Aggiungere il dispositivo  
Добавить устройство  
Adicione o aparelho



点击“+”，选择“快速添加”，再根据APP提示进行操作。  
Scan the QR code or visit the website to learn about the detailed user manual and help.  
Scannen Sie den QR-Code oder besuchen Sie die Website um auf die detaillierte Bedienungsanleitung zuzugreifen und Hilfe.  
Escanee el código QR o visite el sitio web para consultar la guía del usuario detallada y ayuda.  
Scannez le code QR ou visitez le site web pour consulter le guide détaillé et aide.  
Scansionare il codice QR o visita il sito web per consultare la guida utente dettagliata e aiuto.  
Сканируйте этот QR-код или перейдите на наш веб-сайт для просмотра подробного руководства пользователя и помощи.  
Escanee o código QR ou visite o nosso website para consultar detalhadamente o guia do usuário e ajuda.  
扫码阅读使用天猫精灵、Echo、google语音控制教程。  
Scan the QR code to read the voice control instruction for Amazon Echo and Google Home.  
Scannez le code QR Code, um die Anweisungen für die Sprachsteuerung für Amazon Echo und Google Home zu lesen.

User Manual



https://www.sonoff.tech/usermanuals

扫码或输入网址查看产品详细的说明书和帮助。  
Scan the QR code or visit the website to learn about the detailed user manual and help.  
Scannen Sie den QR-Code oder besuchen Sie die Website um auf die detaillierte Bedienungsanleitung zuzugreifen und Hilfe.  
Escanee el código QR o visite el sitio web para consultar la guía del usuario detallada y ayuda.  
Scannez le code QR ou visitez le site web pour consulter le guide détaillé et aide.  
Scansionare il codice QR o visita il sito web per consultare la guida utente dettagliata e aiuto.  
Сканируйте этот QR-код или перейдите на наш веб-сайт для просмотра подробного руководства пользователя и помощи.  
Escanee o código QR ou visite o nosso website para consultar detalhadamente o guia do usuário e ajuda.  
扫码阅读使用天猫精灵、Echo、google语音控制教程。  
Scan the QR code to read the voice control instruction for Amazon Echo and Google Home.  
Scannez le code QR Code, um die Anweisungen für die Sprachsteuerung für Amazon Echo und Google Home zu lesen.

Escanee el código QR para leer las instrucciones de control por voz de Amazon Echo y Google Home. Scannez le code QR pour lire les instructions de contrôle vocal de l'Amazon Echo et Google Home. Scansionare il codice QR per leggere le istruzioni di controllo vocale per Amazon Echo e Google Home. Сканируйте этот QR для просмотра инструкций по голосовому управлению для Amazon Echo и Google Home. Escanee o código QR para ler as instruções para controle de voz Amazon Echo e Google Home.

FCC Warning

Changes or modifications not expressly approved by the party responsible for compliance could void the user's authority to operate the equipment.  
This device complies with part 15 of the FCC Rules. Operation is subject to the following two conditions: (1) This device may not cause harmful interference, and (2) this device must accept any interference received, including interference that may cause undesired operation.  
FCC Radiation Exposure Statement:  
This equipment complies with FCC radiation exposure limits set forth for an uncontrolled environment. This equipment should be installed and operated with minimum distance 20cm between the radiator & your body. This transmitter must not be co-located or operating in conjunction with any other antenna or transmitter.  
Note:  
This equipment has been tested and found to comply with the limits for a Class B digital device, pursuant to part 15 of the FCC Rules. These limits are designed to provide reasonable protection against harmful interference in a residential installation. This equipment generates, uses and can radiate radio frequency energy and, if not installed and used in accordance with the instructions, may cause harmful interference to radio communications. However, there is no guarantee that interference will not occur in a particular installation. If this equipment does cause harmful

interference to radio or television reception, which can be determined by turning the equipment off and on, the user is encouraged to try to correct the interference by one or more of the following measures:  
— Reorient or relocate the receiving antenna.  
— Increase the separation between the equipment and receiver.  
— Connect the equipment into an outlet on a circuit different from that to which the receiver is connected.  
— Consult the dealer or an experienced radio/TV technician for help.  
Hereby, Shenzhen Sonoff Technologies Co., Ltd. declares that the radio equipment type BASICR2/RFR2 is in compliance with Directive 2014/53/EU. The full text of the EU declaration of conformity is available at the following internet address:  
<https://www.sonoff.tech/usermanuals>

**TX Frequency:**  
WiFi: 2412-2472MHz  
**RX Frequency:**  
WiFi: 2412-2472MHz  
SRD: 433.92MHz (RFR2)  
**Output Power:**  
14.43dBm(802.11b),  
11.94dBm(802.11g),  
11.96dBm(802.11n20)

**SONOFF**  
Shenzhen Sonoff Technologies Co., Ltd.  
1001, BLDG8, Lianhua Industrial Park, shenzhen, GD, China  
ZIP code: 518000 Website: sonoff.tech  
MADE IN CHINA

品牌	松诺/SONOFF
物料	BASICR2 RFR2 快速指南 V1.2
材料	105g铜板 四色印刷 手风琴8折页
尺寸	展开: 304x80mm 折后: 38x80mm