

## Install Guide

For more features that are not covered in this Install Guide, please refer to the product's user manual available at [www.tendacn.com](http://www.tendacn.com).

### Package contents

- Wireless Dual Band USB Adapter \* 1
- USB Extension Cable \* 1
- CD Resource \* 1
- Install Guide \* 1

\* If any item is incorrect, missing or damaged, please keep the original package and contact the vendor for replacement immediately.

### Technical Support

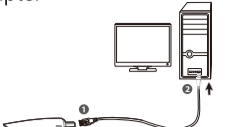
**Manufacturer:** SHENZHEN TENDA TECHNOLOGY CO., LTD.  
**Address:** 6-B Floor, Tower E3, No. 1001, Zhongshanyuan Road, Nanshan District, Shenzhen, China 518052  
**Technical Support:** [support@tenda.com.cn](mailto:support@tenda.com.cn)  
**Telephone:** +86 (0)755 2262810  
**Email:** [sales@tenda.com.cn](mailto:sales@tenda.com.cn)  
**Website:** <http://www.tendacn.com>  
**Skype:** tendasz  
**YouTube:** Tendasz1999

**Manufacturer:** Tenda technology GmbH  
**Address:** Neumann-Richardt-Str. 27-33, Haus 12, 22041, Hamburg  
**Technical Support:** [support@tenda.com.cn](mailto:support@tenda.com.cn)  
**Telephone:** +49 (0)430 2262810  
**Email:** [sales@tenda.com.cn](mailto:sales@tenda.com.cn)  
**Website:** <http://www.tendacn.com>  
**Skype:** tendasz  
**YouTube:** Tendasz1999

## English

### 1 Install the wireless USB adapter

Method 1: Connect the wireless USB adapter to the USB port of your computer using the USB extension cable.



Method 2: Connect the wireless USB adapter to the USB port of your computer directly.



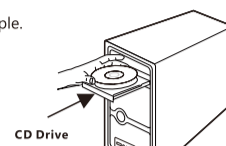
#### Tip

1. For better wireless performance, we recommend that you use the USB extension cable.
2. The wireless USB adapter is compatible with Windows 10/8.1/8/7/XP and Mac operating systems.

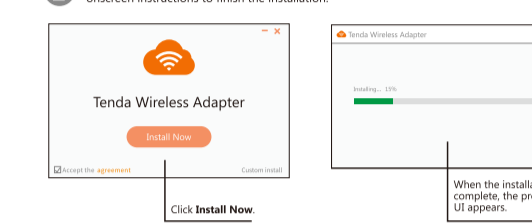
### 2 Install the Tenda network adapter program

Here we take Windows 7 as an example.

Insert the included CD resource to the CD drive of your computer. If your computer has no CD drive, go to [www.tendacn.com](http://www.tendacn.com) and download the program of the product.

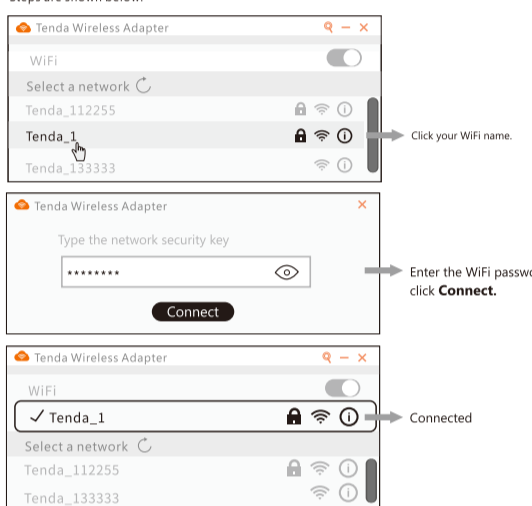


On your computer, access the CD resource folder, double-click **Setup.exe** and follow onscreen instructions to finish the installation.



### 3 Connect to a WiFi network

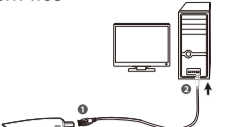
This is a dual band wireless USB adapter which enables you to connect to a 2.4G or 5G WiFi network. Steps are shown below:



## Português

### 1 Instalar o adaptador USB sem fios

Método 1: Conecte o adaptador USB sem fios à porta USB do seu computador usando o cabo de extensão USB.



Método 2: Ligue o adaptador USB sem fios à porta USB do seu computador diretamente.



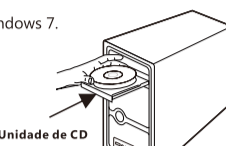
#### Dica

1. Para um melhor desempenho sem fio, recomendamos que use o cabo de extensão USB.
2. O adaptador USB sem fios é compatível com os seguintes sistemas operativos a versões do Windows 10/8.1/8/7/XP e Mac.

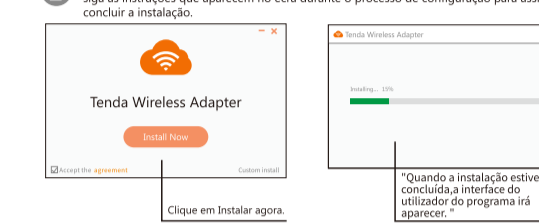
### 2 Instale o programa de adaptador de rede Tenda

Aqui vamos dar como exemplo o Windows 7.

Insira o CD de recursos fornecido na unidade de CD do seu computador. Se o seu computador não tem uma drive de CD, entre em [www.tendacn.com](http://www.tendacn.com) e realize o download do programa do produto.

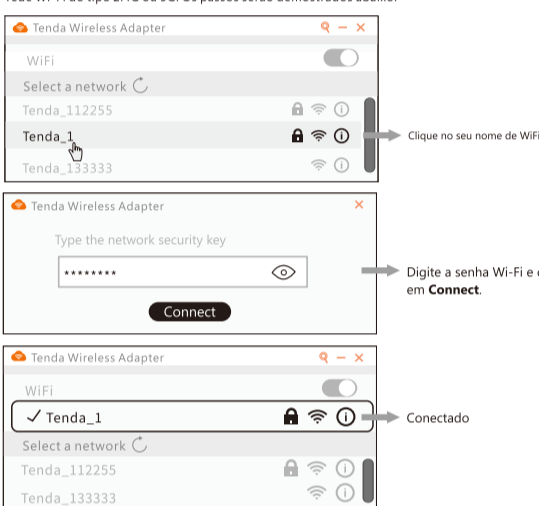


No seu computador, entre na pasta de recursos do CD, clique duas vezes em **Setup.exe** e siga as instruções que aparecem no ecrã durante o processo de configuração para assim concluir a instalação.



### 3 Conecte-se a uma rede Wi-Fi

Este é um adaptador wireless USB de banda dupla, que irá permitir-lhe que se possa conectar a uma rede Wi-Fi do tipo 2.4G ou 5G. Os passos serão demonstrados abaixo:



## Italiano

### 1 Installare l'adattatore USB senza fili

Metodo 1: Collegare l'adattatore USB senza fili alla porta USB del proprio computer utilizzando il cavo di prolunga USB.



Metodo 2: Collegare l'adattatore USB senza fili alla porta USB del proprio computer direttamente.



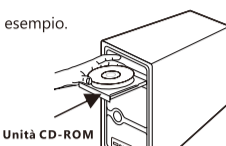
#### Suggerimento

1. Per ottenere prestazioni senza fili migliori, si consiglia di utilizzare il cavo di prolunga USB.
2. L'adattatore USB senza fili è compatibile con Windows 10/8.1/8/7/XP e Mac, sistemi operativi.

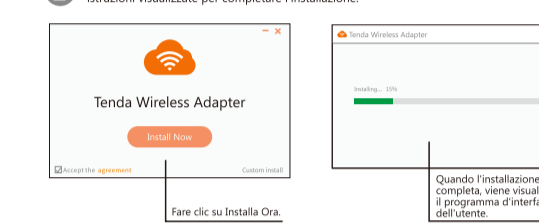
### 2 Installare il programma dell'adattatore di rete Tenda

Qui viene utilizzato Windows 7 come esempio.

Inserire la risorsa CD inclusa nell'unità CD del computer. Se il computer non dispone di alcuna unità CD-ROM, accedere a [www.tendacn.com](http://www.tendacn.com) e scaricare il programma del prodotto.

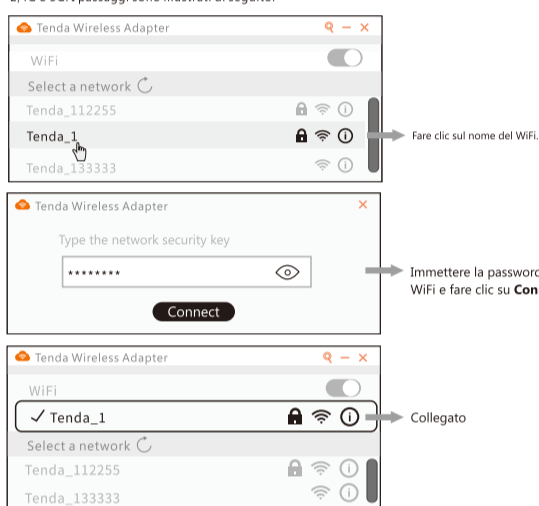


Sul computer, accedere alla cartella risorse del CD, fare doppio clic su **Setup.exe** e seguire le istruzioni visualizzate per completare l'installazione.



### 3 Connettersi a una rete Wi-Fi

Si tratta di un adattatore senza fili dual-band USB che consente di connettersi a una rete Wi-Fi 2.4G o 5G. I passaggi sono illustrati di seguito:



## Deutsch

### 1 Installation des drahtlosen USB-Adapters

Methode 1: Schließen Sie den drahtlosen USB-Adapter mit dem USB-Verlängerungskabel an den USB-Anschluss Ihres Computers an.



Methode 2: Stecken Sie den drahtlosen USB-Adapter direkt in den USB-Anschluss Ihres Computers.



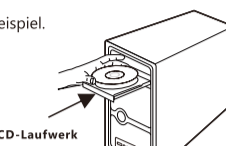
#### Tip

1. Sie erreichen eine bessere drahtlose Leistung, wenn Sie das USB-Verlängerungskabel verwenden.
2. Der drahtlose USB-Adapter ist mit den Betriebssystemen Windows 10/8.1/8/7/XP und Mac kompatibel.

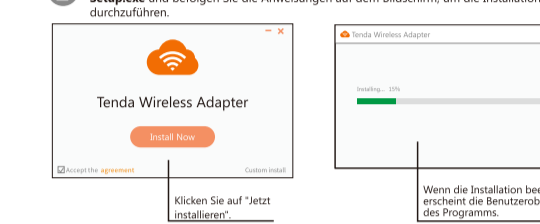
### 2 Installation des Tenda Netzwerk Adapterprogramms

Hier verwenden wir Windows 7 als Beispiel.

Legen Sie die beiliegende CD in das CD-Laufwerk Ihres Computers. Wenn Ihr Computer kein CD-Laufwerk hat, gehen Sie zu [www.tendacn.com](http://www.tendacn.com), wo Sie das Programm zum Produkt herunterladen können.

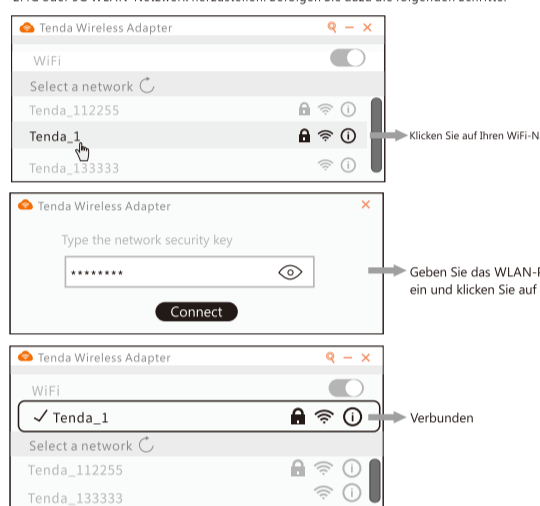


Öffnen Sie in Ihrem Computer den Ordner der CD-Ressourcen, doppelklicken Sie auf **Setup.exe** und befolgen Sie die Anweisungen auf dem Bildschirm, um die Installation durchzuführen.



### 3 Die Verbindung zu einem WLAN-Netzwerk herstellen.

Dies ist ein drahtloser Dualband USB-Adapter, der es Ihnen ermöglicht, die Verbindung zu einem 2.4G oder 5G WLAN-Netzwerk herzustellen. Befolgen Sie dazu die folgenden Schritte:



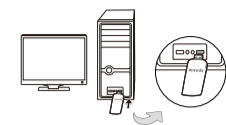
## Polski

### 1 Instalacja bezprzewodowej karty sieciowej USB

Metoda 1: Podłączyć bezprzewodową kartę sieciową USB do gniazda USB komputera używając kabla przedłużającego USB.



Metoda 2: Podłączyć bezprzewodową kartę sieciową USB do gniazda USB komputera bezpośrednio.



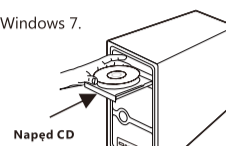
#### Wskazówka

1. Dla uzyskania lepszej wydajności, zalecamy użycie kabla przedłużającego.
2. Bezprzewodowa karta sieciowa USB jest kompatybilna z systemami Windows 10/8.1/8/7/XP i Mac.

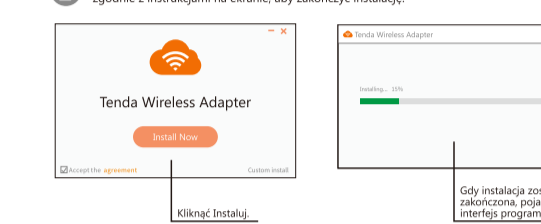
### 2 Zainstalować program do karty sieciowej Tenda

W przykładzie wykorzystano system Windows 7.

Włożyć dołączoną płytę CD do napędu komputera. Jeśli komputer nie posiada napędu, przejść na [www.tendacn.com](http://www.tendacn.com) i pobrać program dla produktu.



Na komputerze, otworzyć folder płyty CD, kliknąć dwukrotnie plik **Setup.exe** i postępować zgodnie z instrukcjami na ekranie, aby zakończyć instalację.



### 3 Łączenie z siecią WiFi

Jest to dwupasmowa bezprzewodowa karta sieciowa USB, która pozwala na łączenie z sieciami WiFi 2.4G i 5G.



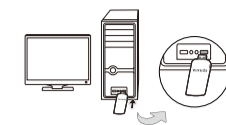
## Русский

### 1 Установите беспроводной USB адаптер

Способ 1: Подключите беспроводной USB-адаптер к USB-порту Вашего компьютера с помощью кабеля удлинителя USB.



Способ 2: Подключите беспроводной USB-адаптер напрямую к USB-порту компьютера.



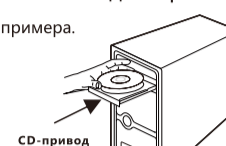
#### Подсказка

1. Для лучшей производительности беспроводной сети мы рекомендуем использовать кабель удлинителя USB.
2. Беспроводной USB-адаптер совместим с операционными системами Windows 10/8.1/8/7/XP и Mac.

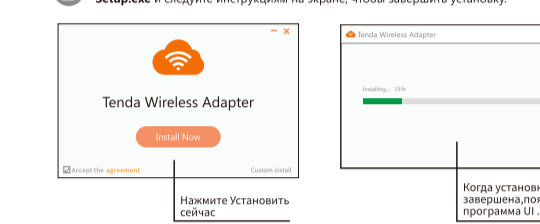
### 2 Установите программу сетевого адаптера Tenda

Возьмем Windows 7 в качестве примера.

Вставьте прилагаемый CD-ресурс в CD-привод Вашего компьютера. Если у Вашего компьютера нет CD-привода, зайдите на [www.tendacn.com](http://www.tendacn.com) и скачайте программу для данного устройства.

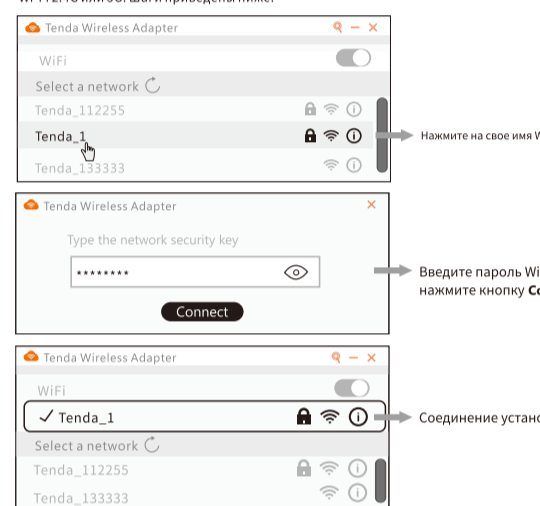


Найдите в папке CD-ресурсов на Вашем компьютере, дважды щелкните файл **Setup.exe** и следуйте инструкциям на экране, чтобы завершить установку.



### 3 Подсоединитесь к сети Wi-Fi

Это двухдиапазонный беспроводной USB-адаптер, который позволяет подключать к сети Wi-Fi 2.4G или 5G. Шаги приведены ниже:



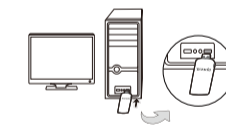
## Español

### 1 Instalar el adaptador inalámbrico USB

Método 1: Conecte el adaptador inalámbrico USB al Puerto USB de su computadora usando el cable de extensión USB.



Método 2: Conecte el adaptador inalámbrico USB al Puerto USB de su computadora directamente.



#### Consejo

1. Para mejor desempeño inalámbrico, recomendamos que use el cable de extensión USB.
2. El adaptador inalámbrico USB es compatible con los sistemas operativos Windows 10/8.1/8/7/XP y Mac.

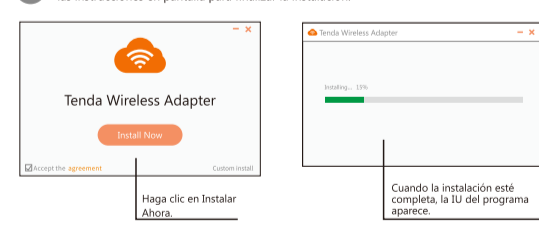
### 2 Instale el programa adaptador de red Tenda

Aquí ponemos a Windows 7 como ejemplo.

Inserte el CD recurso incluido en la unidad de CD de su computadora. Si su computadora no tiene unidad de CD, visite [www.tendacn.com](http://www.tendacn.com) y descargue el programa del producto.

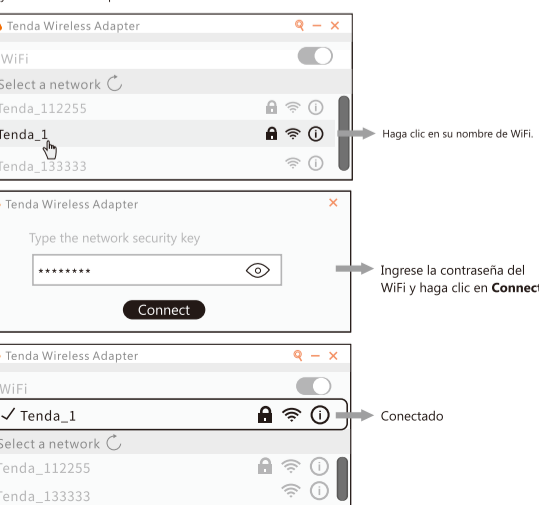


En su computadora, acceda a la carpeta de CD recurso, haga doble clic en **Setup.exe** y siga las instrucciones en pantalla para finalizar la instalación.



### 3 Conectarse a la red WiFi

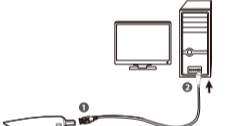
Este es un adaptador USB inalámbrico que le permite conectarse a una red WiFi 2.4G o 5G. Más abajo se muestran los pasos:



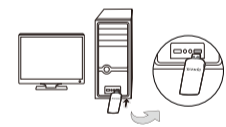
## Français

### 1 Installer l'adaptateur USB sans fil

Méthode 1: Connecter l'adaptateur USB sans fil au port USB de votre ordinateur avec une rallonge USB.



Méthode 2: Connecter l'adaptateur USB sans fil au port USB de votre ordinateur directement.



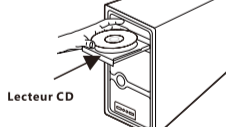
#### Conseil

1. Pour de meilleures performances, nous vous recommandons d'utiliser la rallonge USB.
2. L'adaptateur USB sans fil est compatible avec Windows 10/8.1/8/7/XP et les systèmes opérationnels Mac.

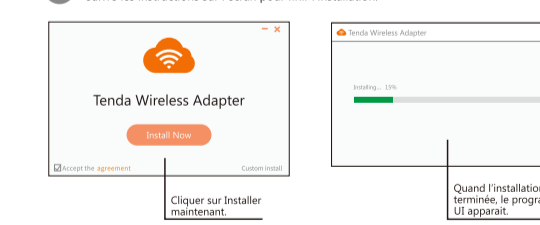
### 2 Installer le programme d'adaptateur de réseau Tenda

Nous prenons ici Windows 7 en exemple.

Insérer le CD inclus dans le lecteur CD de votre ordinateur. Si votre ordinateur n'a pas de lecteur CD, allez sur [www.tendacn.com](http://www.tendacn.com) et télécharger le programme du produit.

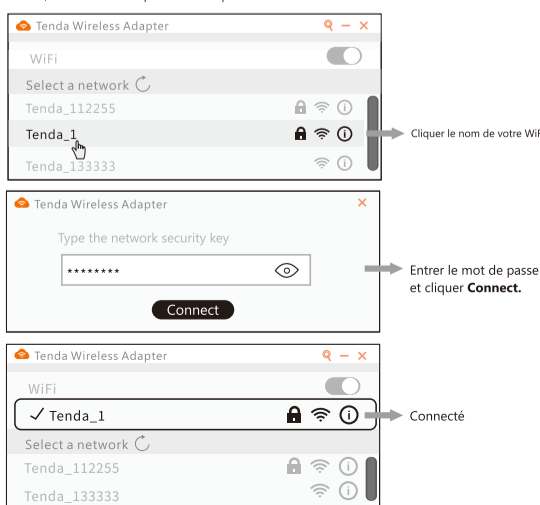


Sur votre ordinateur, accéder au dossier de ressource CD, cliquer double sur **Setup.exe** et suivre les instructions sur l'écran pour finir l'installation.



### 3 Connecter à un réseau WiFi

C'est un adaptateur USB sans fil de bande jumelée qui vous permet de vous connecter à un réseau WiFi 2.4G ou 5G. les étapes sont indiquées ci-dessous.



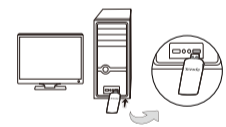
## Czech

### 1 Instalace USB adaptéru bezdrátové sítě

Metoda 1: Připojte USB adaptéru bezdrátové sítě k portu USB na Vašem počítači pomocí prodlužovacího USB kabelu.



Metoda 2: Připojte USB adaptéru bezdrátové sítě k portu USB na Vašem počítači přímo.



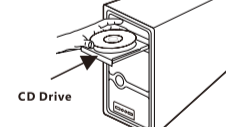
#### Tip

1. Pro lepší výkon bezdrátové sítě doporučujeme použít prodlužovacího USB kabelu.
2. USB adaptéru bezdrátové sítě je kompatibilní s Windows 10/8.1/8/7/XP a operačním systémem Mac.

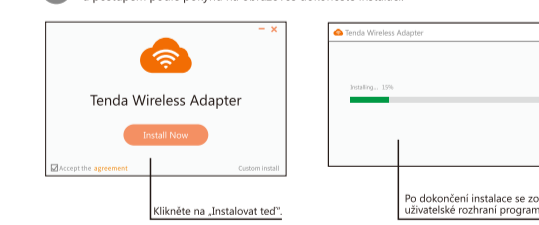
### 2 Nainstalujte si program se síťovým adaptérem Tenda

Zde uvádíme jako příklad Windows 7.

Vložte příložený prostředek (CD) do CD-mechaniky svého počítače. Nemá-li váš počítač CD-mechaniku, jít na [www.tendacn.com](http://www.tendacn.com) a stáhnout si příslušný program k tomuto produktu.

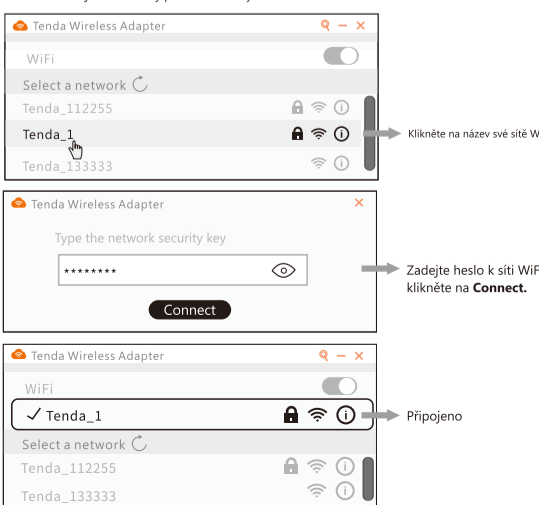


Na svém počítači získejte přístup ke složce prostředků CD, dvakrát klikněte na ikonu **Setup.exe** a postupem podle příkazu na obrazovce dokončete instalaci.



### 3 Připojení k síti WiFi

Toto je dvoupásmový USB adaptéru bezdrátové sítě, který Vám umožňuje připojení k síti 2.4G nebo 5G WiFi. Níže jsou uvedeny potřebné kroky:



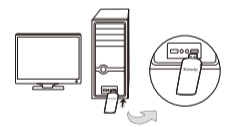
## Türk

### 1 Kablosuz USB adaptörünü takın

Yöntem 1: Kablosuz USB adaptörünü, bilgisayarınızın USB yanına pochtacı pomocí uzatma kablosunu kullanarak.



Yöntem 2: Kablosuz USB adaptörünü, bilgisayarınızın USB yanına bağlayın doğrudan.



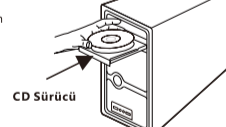
#### İpucu

1. Kablosuz daha iyi verim almak için, USB uzatma kablosunu kullanmanız öneririz.
2. Kablosuz USB adaptörü Windows 10/8.1/8/7/XP ve Mac işletim sistemleriyle uyumludur.

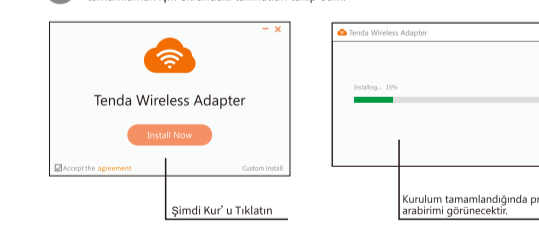
### 2 Tenda ağ adaptörünü programını kurun

Burada Windows 7'yi örnek olarak gösteriyoruz.

Öğün ile birlikte gelen CD'y bilgisayarınızın CD sürücüsüne takın. Eğer bilgisayarınızda CD sürücüsü yoksa, [www.tendacn.com](http://www.tendacn.com) adresine ziyaret edin ve istenilen programı indirin.

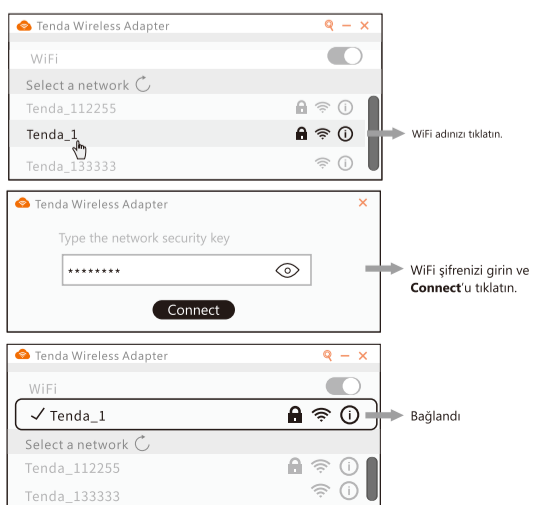


Bilgisayarında CD klasörünü **Setup.exe** dosyasını çift tıklayın ve kurulumu tamamlamak için ekrandaki talimatları takip edin.



### 3 Bir WiFi ağına bağlan

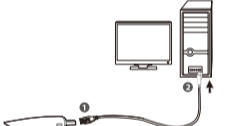
Bu, 2.4G veya 5G WiFi ağına bağlanmanızı sağlayan bir çift bantlı kablosuz USB adaptörüdür.



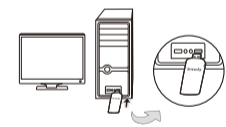
## Română

### 1 Instalati adaptorul USB fără fir

Metoda 1: Conectați adaptorul USB fără fir la portul USB al computerului dvs. utilizând cablul prelungitor USB.



Metoda 2: Conectați adaptorul USB fără fir la portul USB al computerului dvs. direct.



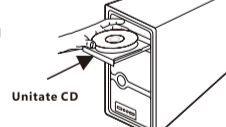
#### Sfat

1. Pentru o mai bună performanță fără fir, vă recomandăm să utilizați cablul prelungitor USB.
2. Adaptorul USB fără fir este compatibil cu sistemele de operare Windows 10/8.1/8/7/XP și Mac.

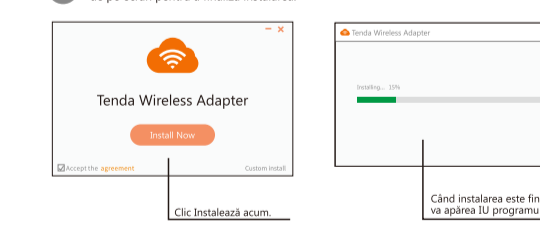
### 2 Instalați programul adaptorului de rețea Tenda

Mai jos aveți Windows 7 drept exemplu.

Introduceți resursa CD inclusă în unitatea CD al computerului dvs. Dacă computerul dvs. nu are unitate CD, accesați [www.tendacn.com](http://www.tendacn.com) și descărcati programul produsului.

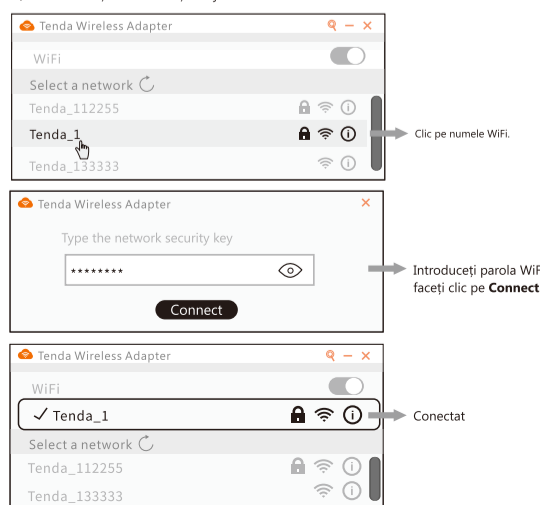


Pe calculatorul dvs., accesați dosarul resurselor CD, dublu clic **Setup.exe** și urmați instrucțiunile de pe ecran pentru a finaliza instalarea.



### 3 Conectați-vă la o rețea WiFi

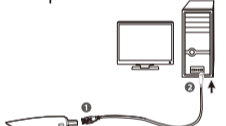
Acesta este un adaptor USB fără fir cu bandă duală, care vă permite să vă conectați la o rețea WiFi 2.4G sau 5G. Pașii sunt indicați mai jos.



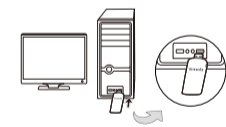
## Magyar

### 1 Wireless (wi-fi) USD adapter telepítése

1. módszer: Connect the wireless USB adapter to the USB port of your computer using the USB extension cable.



2. módszer: Csatlakoztassa a wi-fi USD adaptert a számítógép USB portjához az USB hosszabító kábel segítségével.



#### Tipp

1. A jobb wi-fi teljesítményért az javasolt, hogy használja az USB hosszabító kábelt.
2. A wi-fi USB adapter kompatibilis a Windows 10/8.1/8/7/XP és Mac operációs rendszerekkel.

### 2 A Tenda hálózati adapter program telepítése