



### Quick Installation Guide

AC650 Wireless Dual Band High Gain USB Adapter U10

- Wireless USB Adapter x 1
- Quick Installation Guide x 1

## English

### 1 Install the wireless USB adapter

Connect the wireless USB adapter to the computer's USB port.

1. Connect the wireless USB adapter to a USB port on your computer.



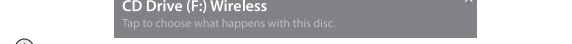
2. Click the system notification.



3. Click **Run Setup.exe** in the pop-up window.

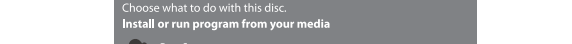


Wait a moment until the installation finishes, and you can connect your computer to a WiFi network now.



### 2 Connect to a WiFi network

Click the **WiFi** icon, select the desired WiFi network, and click **Connect**.



2. If a WiFi password is required for connecting to the network, enter the password and click **Next**.



3. Click **Yes**.



Done.



## Appendix

Scenario 1: No notification appears after you connect the wireless USB adapter to the computer.

Perform the following procedures (Example: Windows 10):

1. Double-click the **WiFi** icon on the desktop.

If there is no such an icon on the desktop, please perform the following procedures to add it to the desktop:

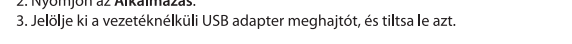
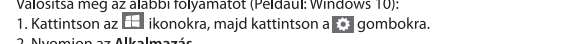
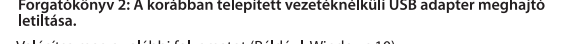
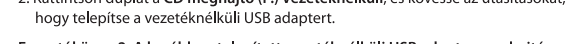
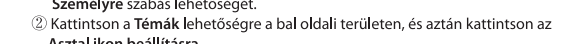
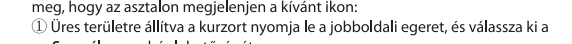
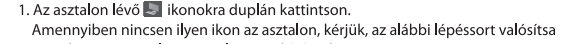
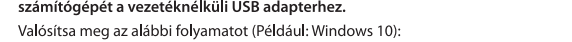
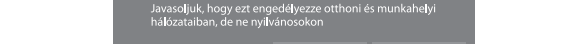
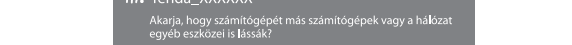
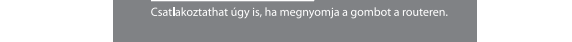
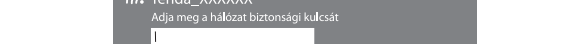
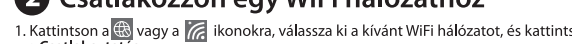
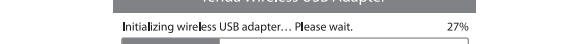
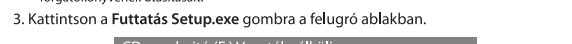
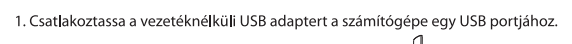
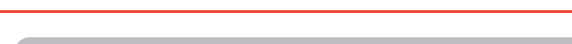
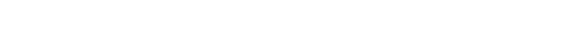
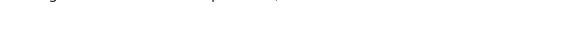
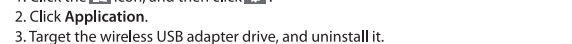
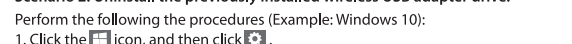
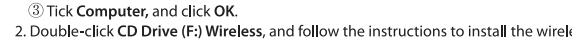
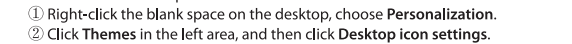
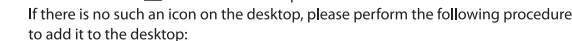
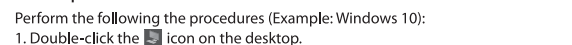
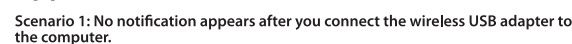
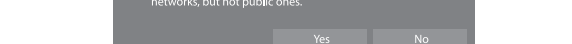
1. Right-click the blank space on the desktop, choose **Personalization**.
2. Click **Themes** in the left area, and then click **Desktop icon settings**.
3. Check **WiFi** and click **OK**.

2. Double-click **CD Drive (F:) Wireless**, and follow the instructions to install the wireless USB adapter.

Scenario 2: Uninstall the previously installed wireless USB adapter drive.

Perform the following the procedures (Example: Windows 10):

1. Click the **WiFi** icon, and then click **WiFi**.
2. Click **Application**.
3. Target the wireless USB adapter drive, and uninstall it.



## Español

### 1 Instalar el adaptador inalámbrico USB

Conecte el adaptador inalámbrico USB al puerto USB de su computadora.

1. Conecte el adaptador inalámbrico USB al Puerto USB de su computadora directamente.



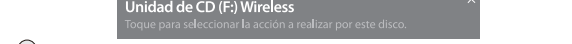
2. Haga clic en la notificación del sistema.



3. Haga clic en **Run Setup.exe** en la ventana emergente.

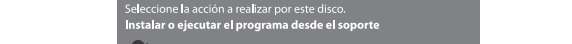


Espera un momento hasta que finalice la instalación, ahora ya puede conectar el ordenador a una red WiFi.

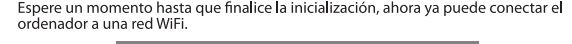


### 2 Conectarse a la red WiFi

Click the **WiFi** icon, select the desired WiFi network, and click **Connect**.

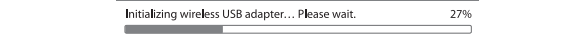


2. Si se requiere una contraseña de WiFi para conectarse a la red, introduzca la contraseña y, a continuación, haga clic en **Siguiente**.



3. Haga clic en **Si**.

Hecho.



## Appendix

Scenario 1: No aparece ninguna notificación después de conectar el adaptador inalámbrico USB al ordenador.

Realice los siguientes procedimientos (Ejemplo: Windows 10):

1. Haga doble clic en el icono **WiFi** en el escritorio.

Si no encuentra este icono en el escritorio, realice los siguientes procedimientos para agregarlo al escritorio:

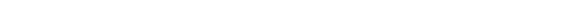
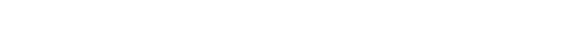
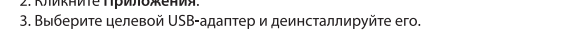
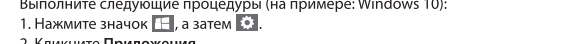
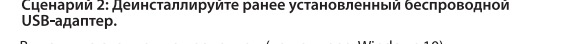
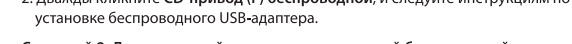
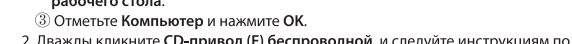
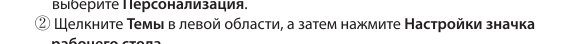
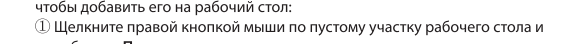
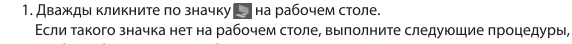
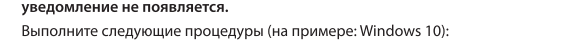
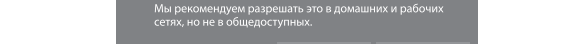
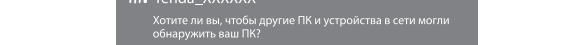
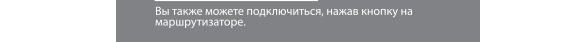
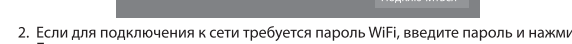
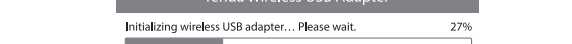
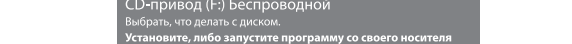
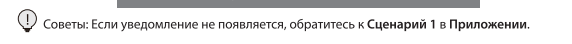
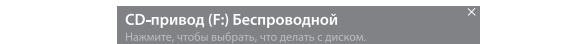
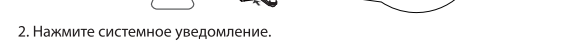
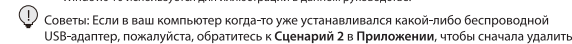
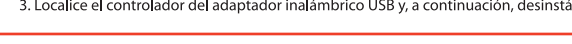
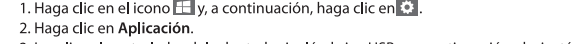
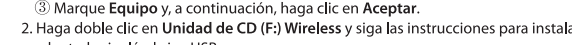
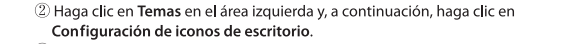
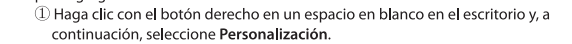
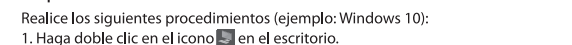
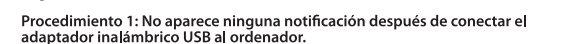
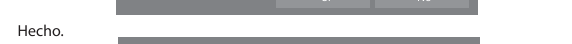
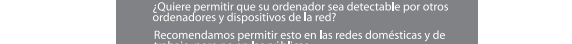
1. Haga clic con el botón derecho en un espacio en blanco en el escritorio y, a continuación, seleccione **Personalización**.
2. Haga clic en **Temas** en el área izquierda y, a continuación, haga clic en **Configuración de iconos de escritorio**.
3. Marque **WiFi** y haga clic en **OK**.

2. Haga doble clic en **Unidad de CD (F:) Wireless** y siga las instrucciones para instalar el adaptador inalámbrico USB.

Scenario 2: Desinstalar el controlador del adaptador inalámbrico USB instalado previamente.

Realice los siguientes procedimientos (Ejemplo: Windows 10):

1. Haga clic en el icono **WiFi**, seleccione la red WiFi deseada y, a continuación, haga clic en **Aplicación**.
2. Haga clic en **Aplicación**.
3. Localice el controlador del adaptador inalámbrico USB y, a continuación, desinstálalo.

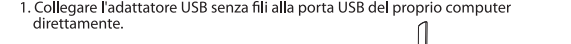


## Italiano

### 1 Installare l'adattatore USB senza fili

Collegare l'adattatore USB senza fili alla porta USB del proprio computer direttamente.

1. Collegare l'adattatore USB senza fili alla porta USB del proprio computer direttamente.



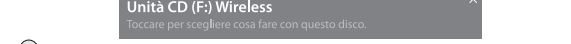
2. Cliccare sulla notifica di sistema.



3. Cliccare **Esegui Setup.exe** nella finestra pop-up.



Attendere un momento fino al termine dell'installazione: ora è possibile connettere il computer a una rete WiFi.

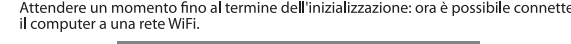


### 2 Connettersi a una rete Wi-Fi

Click the **WiFi** icon, select the desired WiFi network, and click **Connect**.

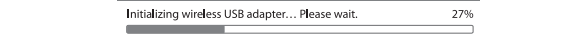


2. Se è necessario una password WiFi per la connessione alla rete, inserire la password e cliccare su **Prossimo**.



3. Cliccare su **Si**.

Fatto.



## Appendix

Scenario 1: Non