

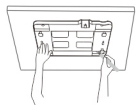
Package contents

- Wireless ceiling AP x 1
  - Bracket x 1
  - Accessories (Screws, plastic nuts, and plastic anchors)
  - Quick installation guide x 1
- If any item is missing, or damaged, please keep the original package and contact the local reseller or distributor immediately.
- This Quick Installation Guide is for installation instruction only. For more product or function details, please go to [www.tendacn.com](http://www.tendacn.com).

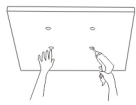
2. Installing your AP

Ceiling installation

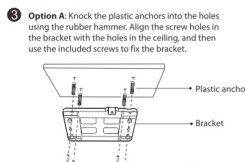
1 Position the bracket on the ceiling and mark screw holes on the ceiling with the marker.



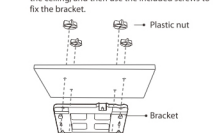
2 Drill holes in the marked positions using a hammer drill.



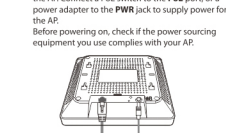
3 **Option A:** Knock the plastic anchors into the holes using the rubber hammer. Align the screw holes in the bracket with the holes in the ceiling, and then use the included screws to fix the bracket.



3 **Option B:** Align the plastic nuts with the holes in the ceiling, and then use the included screws to fix the bracket.



4 Connect a CAT5 or better cable to the LAN port of the AP. Connect a PoE switch to the PoE port, or a power adapter to the PWR jack to supply power for the AP. Before powering on, check if the power sourcing equipment you use complies with your AP.



5 Insert the slots of the AP into the hooks of the bracket, and push the AP to one side until you hear a click.

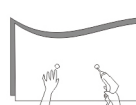


Wall mounting

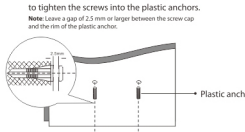
1 Position the bracket on the wall, and mark screw holes on the wall with the marker.



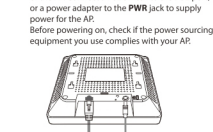
2 Drill holes in the marked positions using a hammer drill.



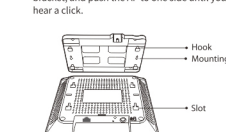
3 Knock the plastic anchors into the holes using the rubber hammer. Then use the screwdriver to tighten the screws into the plastic anchors. Note: Leave a gap of 2.5 mm or larger between the screw cap and the rim of the plastic anchor.



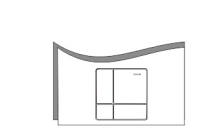
4 Connect a CAT5 or better cable to the LAN port of the AP. Connect a PoE switch to the PoE port, or a power adapter to the PWR jack to supply power for the AP. Before powering on, check if the power sourcing equipment you use complies with your AP.



5 Insert the slots of the AP into the hooks of the bracket, and push the AP to one side until you hear a click.



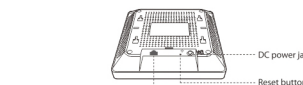
6 Align the wall mounting holes on the bracket with the screws to mount it.



1. Getting to know your AP



LED Indicator	Status	Description
SYS	Solid on	The system is starting.
	Blinking	After startup, it indicates that the system is faulty.
	Off	The system is working properly.
	Off	The AP is not powered on, or the LED indicator has been turned off using the web UI of AP.



Ports/Button	Description
LAN	It is a 10/100/1000 Mbps auto negotiation port used to transmit data or supply PoE power for the AP using Ethernet cables.
RESET	When the SYS LED indicator of the AP blinks, you can hold this button down for about 8 seconds to reset the AP.
PWR	DC power jack. You can use a power adapter to supply power for the AP.

Caution: The power specification may vary. Before powering on, check if the power sourcing equipment you use complies with your AP.

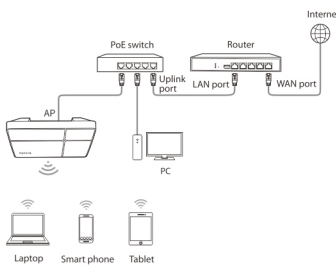
3. Connecting and Configuring your APs

Scenario 1: Deploying your network without a management device for Tenda AP

Tip: Connect and configure your APs one by one. That is to say, connect one AP to your PoE switch and configure it. After finished, connect the second AP and repeat 1 and 2 on them.

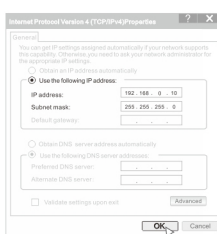
1 Connect devices

Connect your AP to a PoE port of the PoE switch using an Ethernet cable. Refer to the following figure for detailed connection. After finishing, check your connection, ensure that the AP's LED indicator blinks and the lower-right Internet icon on your computer is not displayed.



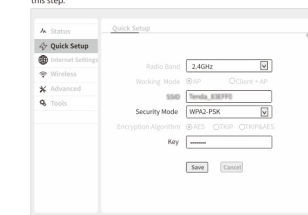
2 Configure the IP address of your computer (Example: Win10)

Right-click the network icon on the lower-right corner of your computer. Click **Network and Sharing Center > Change adapter settings**. Right-click the **Ethernet**, then **Properties**. Double-click **Internet Protocol Version 4 (TCP/IPv4)**, select **Use the following IP address**, set **IP address to 192.168.0.x (x: 2 to 253)** and **Subnet mask to 255.255.255.0**, and click **OK**.



3 Log in to the web UI of the AP

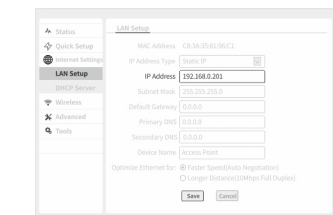
Start a web browser on your computer, and access **192.168.0.254**. Follow the on-screen instructions for login. Choose **Quick Setup**, the **2.4GHz** configuration page appears. Configure **SSID (WiFi name)**, **Security Mode (WPA2-PSK is recommended)**, **Key**, and click **Save**. Then select **5GHz** from the **Radio Band** drop-down list and repeat this step.



Tip: If you cannot log in to the web UI of the AP, refer to Q1 in FAQ.

4 Modifying the IP address of the AP

Choose **Internet Settings > LAN Setup**. Modify the IP address of the AP to **192.168.0.x (x: 2 to 253)**, and ensure that the new IP address has not been used in this network, then click **Save**. Example: You can set the new IP address of the first AP to **192.168.0.201**, and the new IP address of the second AP to **192.168.0.202**.

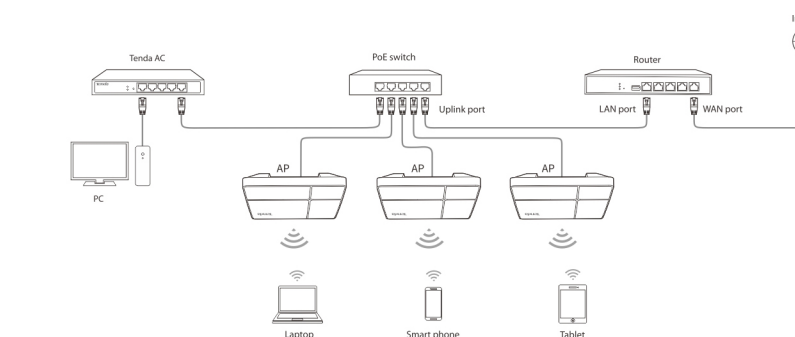


Done. WiFi name: The **SSID** you set in step 3. WiFi password: The **Key** you set in step 3.

Scenario 2: Deploying your network with an Tenda access controller (AC)

1 Connect devices

Use Ethernet cables to connect APs to PoE ports of the switch. Refer to the following figure for detailed connection.



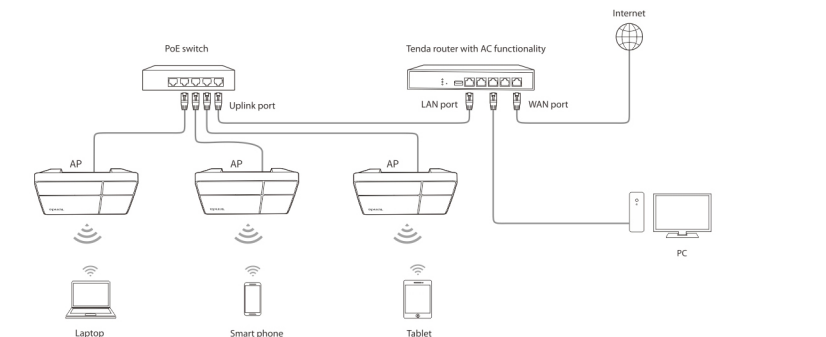
2 Configure APs

Start a web browser on your computer and log in to the web UI of the AC. Refer to your AC's user guide for detailed instructions.

Scenario 3: Deploying your network with an Tenda router that includes the AC functionality

1 Connect devices

Use Ethernet cables to connect APs to the PoE ports of the switch. Refer to the following figure for detailed connection.



2 Configure APs

Start a web browser on your computer and log in to the web UI of your Tenda router. Refer to the router's user guide for detailed instructions.

FAQ

Q1. I cannot access the web UI of the AP after entering 192.168.0.254.

- What should I do?**
- Try the following solutions:
    - Check if your Ethernet cables are connected properly. If yes, the corresponding LED indicator lights up.
    - Ensure that the IP address of your computer has been set to 192.168.0.x (x: 2 to 253), and the IP address is not used by any other devices in the network.
    - Clear the cache of your web browser, or replace the web browser.
    - Disable the firewall of your computer, or replace the computer.
    - If two or more APs are connected in the network without an AC Controller, you should leave only one AP in the network first and configure the AP's IP address. Then repeat this procedure to change the IP addresses of the other APs. Meanwhile, ensure that the AP's new IP addresses are in the same network segment with the IP address of your computer. Then try logging in to the AP's web UI using their new IP addresses.
    - The AP may be being managed by an AC, and therefore its IP address is no longer 192.168.0.254. In this case, go to the web UI of the AC to view the new IP address of the AP, and then log in to the AP's web UI using the new IP address.
    - If the problem persists, reset the AP.

Q2. My wireless AC cannot find the AP. What should I do?

- A2.** Try the following solutions:
- Check if you use the Tenda AC. The AP can only be managed by Tenda AC.
  - Ensure that all the devices in the network are connected properly and the AP has completed startup.
  - If VLANs have been defined in your network, verify that the corresponding VLAN has been added to your AC.
  - Reboot the AP.
  - Ensure that the firmware versions of your AP and AC are the same with the latest firmware versions available on <http://www.tendacn.com>.
  - Reset your AP.

Q3. How to upgrade my AP?

- A3.** Perform as follows:
- Choose your firmware version and download it from our official website <http://www.tendacn.com>.
  - Unzip the file you downloaded.
  - Log in to the web UI of the AP, choose **Tools > Maintenance**, and navigate to the **Firmware Upgrade** section. Click **Upgrade**, select and upload the file ending with **.bin** from the file folder you unzipped, and click **Upgrade**.
  - After successful upgrade, reset your AP to apply your settings.

Q4. How to reset my AP?

- A4.**
- Option 1:** Reset using the RESET button  
When the SYS LED indicator of the AP blinks, hold down the **RESET** button for about 8 seconds. The AP is reset successfully when the SYS LED indicator lights solid on.
- Option 2:** Reset using the web UI  
Log in to the web UI of the AP, choose **Tools > Maintenance**, and navigate to the **Reset** section, then follow the on-screen instruction to reset it.

Note: Resetting clears all configurations of your AP.

CE

CE Mark Warning

This is a Class B product. In a domestic environment, this product may cause radio interference, in which case the user may be required to take adequate measures. Operations in the 5.15-5.25 GHz band are restricted to indoor use only. This equipment should be installed and operated with minimum distance 20cm between the device and your body. The mains plug is used as disconnect device, the disconnect device shall remain readily operable.

NOTE: (1) The manufacturer is not responsible for any radio or TV interference caused by unauthorized modifications to this equipment. (2) To avoid unnecessary radiation interference, it is recommended to use a shielded RJ45 cable.



RECYCLING

This product bears the selective sorting symbol for Waste electrical and electronic equipment (WEEE). This means that this product must be handled pursuant to European directive 2012/19/EU in order to be recycled or dismantled to minimize its impact on the environment. User has the choice to give his product to a competent recycling organization or to the retailer when he buys a new electrical or electronic equipment.

Declaration of Conformity

Hereby, SHENZHEN TENDA TECHNOLOGY CO., LTD. declares that the radio equipment type (24 is in compliance with Directive 2014/53/EU. The full text of the EU declaration of conformity is available at the following internet address: <http://www.tendacn.com/en/service/download-cata-101.html>

Operating Frequency:  
2.4GHz: 2.412GHz - 2.472GHz 5GHz: 5.15 - 5.25GHz  
ERP Power (Max.):  
2.4GHz: 19.8dBm 5GHz: 22.8dBm  
Software Version: V1.0.0.2

FCC

FCC Statement

This equipment has been tested and found to comply with the limits for a Class B digital device, pursuant to Part 15 of the FCC Rules. These limits are designed to provide reasonable protection against harmful interference in a residential installation. This equipment generates, uses and can radiate radio frequency energy and, if not installed and used in accordance with the instructions, may cause harmful interference to radio communications. However, there is no guarantee that interference will not occur in a particular installation. If this equipment does cause harmful interference to radio or television reception, which can be determined by turning the equipment off and on, the user is encouraged to try to correct the interference by one or more of the following measures:  
— Reorient or relocate the receiving antenna.  
— Increase the separation between the equipment and receiver.  
— Connect the equipment into an outlet on a circuit different from that to which the receiver is connected.  
— Consult the dealer or an experienced radio/TV technician for help.

The device is for indoor usage only.

Operation is subject to the following two conditions: (1) this device may not cause harmful interference, and (2) this device must accept any interference received, including interference that may cause undesired operation.

Radiation Exposure Statement

This device complies with FCC radiation exposure limits set forth for an uncontrolled environment and it also complies with Part 15 of the FCC RF Rules. This equipment should be installed and operated with minimum distance 20cm between the device and your body.

Caution:

Any changes or modifications not expressly approved by the party responsible for compliance could void the user's authority to operate this equipment. This transmitter must not be co-located or operating in conjunction with any other antenna or transmitter.

Operating Frequency: 2.412GHz - 2.462GHz, 5.15 - 5.25GHz, 5.725 - 5.825GHz  
**NOTE:** (1) The manufacturer is not responsible for any radio or TV interference caused by unauthorized modifications to this equipment. (2) To avoid unnecessary radiation interference, it is recommended to use a shielded RJ45 cable.

Operating temperature: -10°C - 40°C  
Operating humidity: 10% - 90% RH, non-condensing  
Storage temperature: -30°C - 70°C  
Storage humidity: 5% - 93% RH, non-condensing

For EU/EFTA, this product can be used in the following countries:

BE	BG	CZ	DK	DE	EE	IE	EL	ES	FR
HR	IT	CY	LV	LT	LU	HU	MT	NL	AT
PL	PT	RO	SI	SK	FI	SE	UK		

**Technical Support**  
Shenzhen Tenda Technology Co., Ltd.  
6-8 Floor, Tower E3, NO.1001, Zhongyuan Road, Nanshan District, Shenzhen, China, 518052  
USA hotline: 1-800-570-8892  
Toll Free: Daily 9am to 6pm EST  
Canada hotline: 1-888-998-9966  
Toll Free: Mon - Fri 9 am - 6 pm PST  
HongKong hotline: 00852-81931998  
Global hotline: +86 755-2762 7180 (China Time Zone)  
Website: <http://www.tendacn.com>  
E-mail: [support@tenda.com.cn](mailto:support@tenda.com.cn)

**Copyright**  
© 2019 Shenzhen Tenda Technology Co., Ltd. All rights reserved.  
Tenda is a registered trademark legally held by Shenzhen Tenda Technology Co., Ltd. Other brand and product names mentioned herein are trademarks or registered trademarks of their respective holders. Specifications are subject to change without notice.