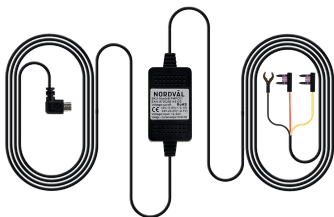


PARKING MODE CABLE SET

NORDVÄL PMPC01



English



NORDVÄL

DECLARATION OF CONFORMITY

Product information

For the following

Product: Hardwire cable

Type: PMPC01 Parking mode cable set



Declaration and applicable standards

Hereby, TJM Supplies B.V. declares that the type of hardwire cable PMPC01 conforms to: Directive EMC 2014/53/EU and the RoHS directive (2011/65/EU) and its amendment directives 2015/863/EU on the restriction of the use of certain hazardous substances in electronic equipment.

The full text of the EU declaration of conformity can be found at the following internet address: www.nordval.eu/declaration-of-conformity/

Importer

Company:	TJM Supplies B.V.
Address:	Zompstraat 8 8102 HX Raalte The Netherlands
Email:	info@tjmsupplies.nl
Phone number:	+31 85-0402973
Business license number:	72016981
VAT number:	NL858946439B01

Nordvål® is the registered trademark of TJM Zwerink Holding B.V.

Specifications are subject to change without notice.

Copyright© 2021 TJM Supplies B.V. All rights reserved.

Manufactured in China.

PMPC01 PARKING MODE CABLE SET



Caution

- Read this manual carefully before installation and, if in doubt, consult an authorized installer.
- Nordvål is not responsible for any damage caused by incorrect connection or by not following the instructions in this manual.

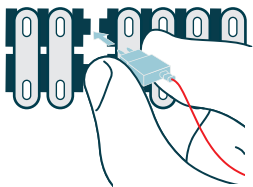
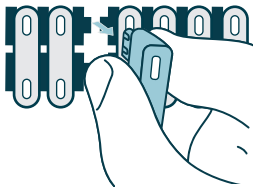
- ▶ Power your Nordvål dashcam while your car is parked.
- ▶ If the voltage level drops, the PMPC01 will automatically turn off the power to prevent an empty car battery.

1 Stop the engine and remove the fuse box lid.

Refer to your car owner's manual to locate the fuse box and remove the lid. The location and layout of the fuse box and the type of fuse depends on the brand and type of vehicle.

2 Connect the red ACC(+) fuse to the fuse box.

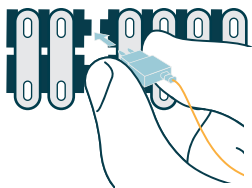
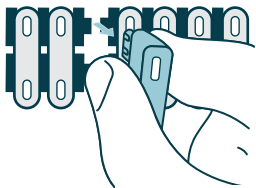
Find a spare switched fuse or remove a switched fuse from the fuse box. Then place the red ACC(+) fuse in the referred place.



3 Connect the **yellow BATT(+)** fuse to the fuse box.

Find a spare constant fuse, or remove one from the fuse box.

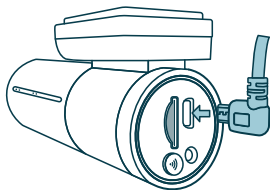
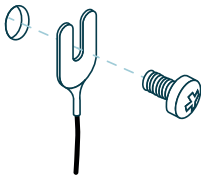
Then place the yellow BATT(+) fuse in the referred place.



4 Connect the **black GND** wire to a ground point.

Attach the GND wire to a grounding point, such as a bolt located directly on a metal part of the vehicle frame.

Connect the micro USB cable to the Nordvål dashcam and start the engine. Check if the dashcam turns on and keeps recording when you stop the engine.



SPECIFICATIONS

Cable length	3,5 meters
Voltage	12V and 24V
Outgoing	5V / 3 ampère
Voltage cut-off	< 11,6V and 23,2V





NORDVÄL
Smart technology