

INSTRUCTION MANUAL

# WALL PLUG

— FIBARO SYSTEM —



## Technical support

Should you need any assistance in connecting or configuring your Home Center, please use our guides and technical presentations which can be found on our website:

**<http://www.fibaro.com/en/support>**

## Functional features



Power consumption  
metering



Energy consumption  
history



Controlled remotely



Z-Wave network  
tester

## Download FIBARO app for smartphone



## Your Wall Plug is ready to be added to the Home Center.

Wall Plug must be in range of the Home Center because it requires a direct communication with the controller.



## Start inclusion mode

**STEP 1**  
Go to Settings.



## Start inclusion mode

### STEP 2

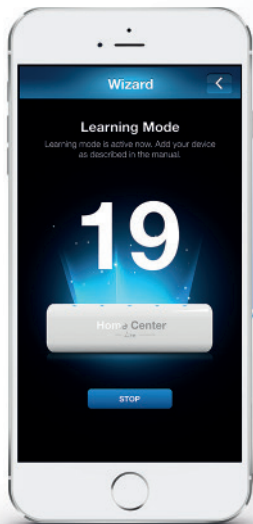
Press "add device".



### STEP 3

Press "Next".

Inclusion mode has been launched



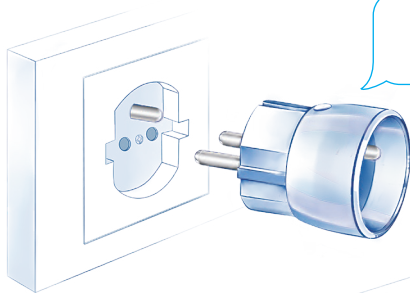


## Add your device

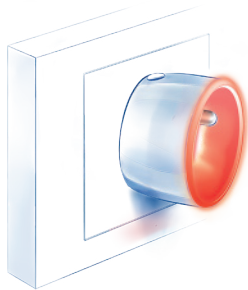
It is recommended to use the socket located possibly the closest from the Home Center.

### STEP 4

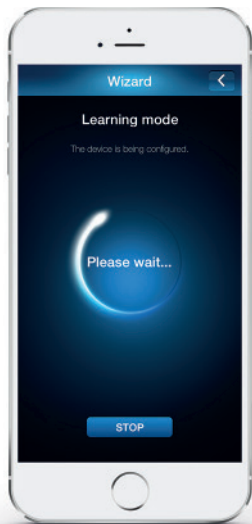
Insert the device in the power outlet.



Once the Plug is turned on, the LED ring will glow red.



## Processing your configurations



## The device has been added

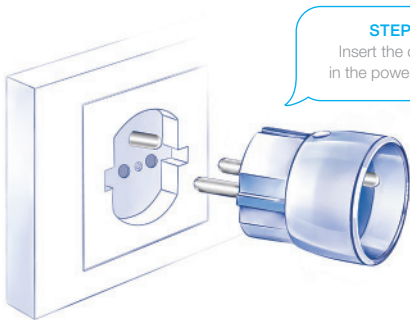


### STEP 5

Name the device and assign it to the room.

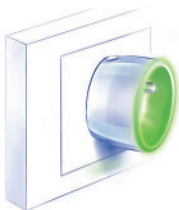


## Installation

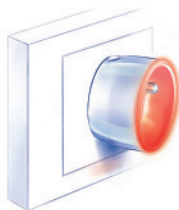


### STEP 6

Insert the device  
in the power outlet.



If the LED ring glows green, it means that the device has been added successfully to the Home Center.



If the LED ring glows red, it means that the device has not been added successfully to the Home Center. System configuration needs to be repeated.

## Network range test

It is recommended to check if the device's destination is in range of your Home Center.

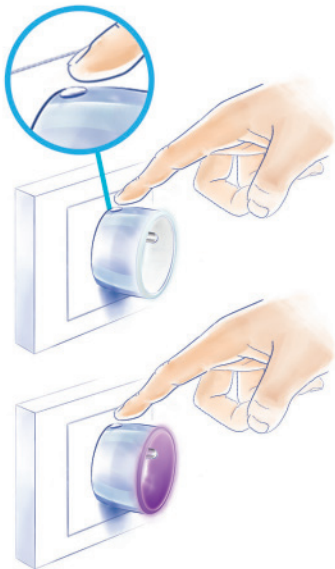
### STEP 7

Hold the button for a few seconds until LED ring blinks violet.

### STEP 8

Release the button, and press it again.

Network range test will be activated.  
LED ring will indicate the quality of the network range.



## Network range test – quality indicator



Direct  
communication



Routed  
communication



Limited  
communication

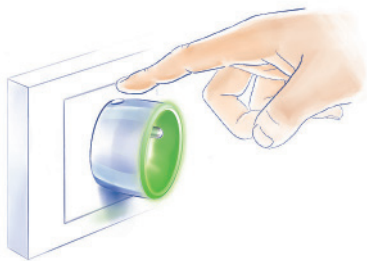


No signal! The device  
will not work correctly!



### STEP 9

Press the button in order  
to leave testing mode.



## Wall Plug data available in the energy usage overview panel.

The energy usage panel is available in FIBARO app for tablet, PC and MAC.





[www.fibaro.com](http://www.fibaro.com)