

Road Traffic Management



DATASHEET



INTRODUCTION

Mileight Road Traffic Management Camera combines video surveillance with AI, ANPR, 3D Radar and other cutting-edge technologies helps traffic management agencies systematically and intelligently monitor and understand road users' behavior and gain valuable insights based on real-time data to optimize traffic flow, minimize accident risks, and respond to emergencies more efficiently. It can be widely used in urban public security management systems, which can significantly improve management efficiency and make traffic smarter, safer and smoother.

AI Road Traffic Pro Bullet Plus Camera



- 4X/12X Optical Zoom
- 1/2" STARVIS Starlight Sensor
- 90fps
- 140dB Super WDR
- Up to 70m Illumination Distance
- Smart IR II Technology
- IP67 & IK10
- Versatile Interfaces
- Integrated Cable Management

AI Road Traffic Supplement Light Pro Bullet Plus Camera



- Integrated Supplement Light
- 4X Optical Zoom
- 1/2" STARVIS Starlight Sensor
- 90fps
- 140dB Super WDR
- Up to 70m Illumination Distance
- Smart IR II Technology
- IP67
- Versatile Interfaces

AI Road Traffic Radar Pro Bullet Plus Camera



- Advanced 3D Radar Technology
- 4X/12X Optical Zoom
- 1/2" STARVIS Starlight Sensor
- 90fps
- 140dB Super WDR
- Up to 70m Illumination Distance
- Smart IR II Technology
- IP67
- Versatile Interfaces
- Easy Deployment and Compact Structure
- Integrated Cable Management

AI Road Traffic PTZ Bullet Camera

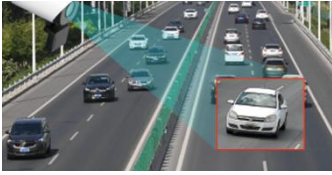


- IFlexible Pan, Tilt and Zoom Tasks
- 12X Optical Zoom
- 1/2.8" STARVIS Starlight Sensor
- 90fps
- 140dB Super WDR
- Up to 175m Illumination Distance
- Smart IR II Technology
- Intelligent White LED
- Smart PTZ Motion Detection
- IP66
- Keyboard Control



Application of Milesight Traffic Solution

Advanced AI LPR Algorithm Improves Road Safety



No-plate Vehicle Capture

- Real-time Detection of Vehicles without License Plates.
- Capture Snapshot & Smart Search.



Specific Lane Management

- Detection of Cars and Trucks Traveling or Parking in Bus Lanes.
- Customize Permitted Vehicles & Residence Time.



Parking Violation Detection

- Real-time Capture of Violated Vehicles that Exceed the Set Time.
- Smart Parking Search.



Vehicle Attributes Alarm based on Schedule

- Various Vehicle Attributes Recognition to Search & Locate Target Vehicles Faster.
- Avoid Illegal Vehicles on the Road.
- Locate Stolen & Abnormal Vehicles.



Speeding Detection

(Only for Radar Models)



Reverse Driving Detection



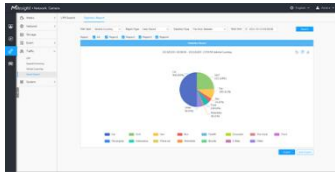
Black/White List Management

Ideal for Traffic Flow Statistics and Analysis



Vehicle Counting Based on Vehicle Type

- Car/Motorcycle/Non-motor
- Small/Medium/Large Vehicle
- Various Vehicle Attributes.



Intuitive Report

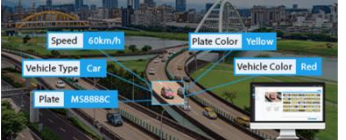
- The Vehicle Counting Results are Visually Displayed in The Live View Interface.
- Multiple Report Types including Line Chart and Pie Chart.

Evidence Capture Improves Enforcement Efficiency



Evidence Camera Linkage

- Linking LPR Camera and Regular Camera for Evidence Capture
- LPR Camera for License Plate Recognition and Linkage Triggering
- Regular Camera for Full Snapshot of the Scene



LPR Smart Search Function

- Real-time detection results
- Manual Export & Auto Export
- Detected time, live screenshot, license plate
- Search by Plate Color, Vehicle Type & Color, Speed, Direction, etc.

Intelligent Plate Data Management Helps Enhance City Management



Black/White List Management

- Add the license plates & Batch Upload.
- Black List/White List/Visitor Mode.
- List Scheduling Management.
- Set the alarm action for the plates.



Stand alone LPR Solution

- Built-in AL LPR Algorithm.
- Embedded Black & White Lists.



Closed-loop Back-end Integration

- Full Compatibility with Milesight Back-ends.
- Completely Closed-loop ANPR Solutions.



Open Integration with 3rd Party

- Various CGI/APIs.
- Diverse Protocols Available to Reduce Extra Human Labour (Wiegand, TCP, HTTP, etc.).
- Full Data Push.

License Plates Administration Backed by Intelligence

Improve Road Safety and Enforcement Efficiency



Embedded AI LPR Algorithm



AI-based Vehicle Attributes Recognition



Integrated 3D Radar Technology



Broad Range of Countries and Regions Supported



Superior Image Quality for 24/7 Traffic Monitoring

Excellent Capture Performance



• LPR Image Mode



• Integrated Supplement Light



HLC Off



HLC On

• HLC (Highlight Compensation)



By Conventional Camera



By MileSight Camera

• 0.002Lux Starlight

- Accurately Capture Plates of Fast Moving Vehicles



Dynamic Clarity Off



Dynamic Clarity On



30fps@1080



90fps@1080

- Excellent Capture Performance at High Speed and Accuracy

200km/h
Recognizable Speed

>95%
High Recognition Accuracy

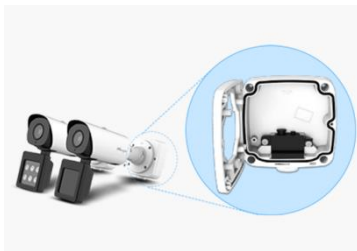


License Plate
Serial Format

4 Detection
Regions

Maximized Flexibility for Your Convenience

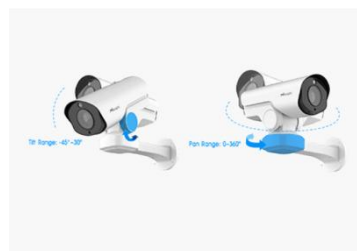
Unique Design, Easy and Flexible Installation



- Integrated Junction Box



- 3-Axis Mechanical Design



- Flexible Pan,
Tilt and Zoom Tasks for ANPR




- Easy Deployment and
Compact Structure



**OBTAIN
THE USER MANUAL**




	Name	AI Road Traffic Pro Bullet Plus Camera		
Camera	Appearance			
	Model	TS2866-X4TPE (2MP)	TS2966-X12TPE (2MP)	TS8266-X4PE (4K)
	Image Sensor	1/2" Progressive Scan CMOS	1/2.8" Progressive Scan CMOS	1/1.8" Progressive Scan CMOS
	Min. Illumination	Color: 0.002Lux@F1.6 B/W: 0Lux with IR on	Color: 0.005Lux@F1.6 B/W: 0Lux with IR on	Color: 0.009Lux@F1.6 B/W: 0Lux with IR on
	WDR	140dB Super WDR		120dB Super WDR
	Shutter Time	1/100000s~1s		
	Day/Night Mode	Day/Night/Auto/Customize/Schedule		
	S/N	>55dB		
	Lens	Lens	8~32mm, 4X Optical Zoom	5.3~64mm, 12X Optical Zoom
Field of View		H44°~H13°/D51°~D15°/V25°~V7°	H61°~H5°/D69°~D5°/V36°~V2°	H44°~H13°/D51°~D15°/V25°~V7°
Mount		Φ14		
Focus Control		Auto/Manual		
Aperture		F1.6~F1.7	F1.6~F2.8	F1.6~F1.7
Iris Control		Auto		
Road Traffic Management	Max. Vehicle Speed	200km/h		
	Recognition Accuracy	>95%		
	Coverage	Support simultaneous detection of 4 regions		
	Country Region Supported	More than 80 countries and regions		
	Illumination Distance	Up to 70m during the day; Up to 35m during the night with illumination		
	Attributes Identification	Plate Color, Vehicle Type, Vehicle Color, Vehicle Brand, No-plate Vehicle Capture, Vehicle Direction Detection,		
	Smart Traffic Function	Evidence Camera Linkage, Specific Lane Management		
	White/Black List	Up to 1000 records inside the camera		
Interface	LPR Smart Search	Support		
	Ethernet	1*RJ45 10M/100M Ethernet Port		
	Audio I/O	1/1		
Video	Alarm I/O	2/2		
	Max. Image Resolution	1920x1080		3840x2160
	Primary Stream	60Hz/50Hz: 90fps@(1920x1080, 1280x960, 1280x720, 704x576)		60Hz: 30fps@(3840x2160, 3072x2048, 2592x1944, 2592x1520, 2048x1536, 1920x1080, 1280x960, 1280x720, 704x576) 50Hz: 25fps@(3840x2160, 3072x2048, 2592x1944, 2592x1520, 2048x1536, 1920x1080, 1280x960, 1280x720, 704x576)
Secondary Stream	60Hz: 60fps@(704x576, 640x480, 640x360, 352x288, 320x240) 50Hz: 50fps@(704x576, 640x480, 640x360, 352x288, 320x240)			

Road Traffic Management



Video	Tertiary Stream	60Hz: 30fps@(1920x1080, 1280x720, 704x576, 640x480, 640x360, 320x240) 50Hz: 25fps@(1920x1080, 1280x720, 704x576, 640x480, 640x360, 320x240)		
	Video Compression	H.265*/H.265(HEVC)/H.264*/H.264/MJPEG		
	Video Bit Rate	16Kbps~16Mbps(CBR/VBR Adjustable)		
	Privacy Masking	Up to 8 Areas (Mask Area and Mosaic Area are optional)		
	ROI	Up to 8 areas		
	Image Setting	Brightness/Contrast/Saturation/Sharpness		
Network	Network Storage	NAS(Support NFS, SMB/CIFS), ANR		
	Protocol	IPv4/IPv6, ARP, TCP, UDP, RTCP, RTP, RTSP, RTMP, HTTP, HTTPS, DNS, DDNS, DHCP, FTP, NTP, SMTP, SNMP, UPnP, Bonjour, SIP, PPPoE, VLAN, 802.1x, QoS, IGMP, ICMP, SSL		
Audio	Audio Compression	G.711/AAC/G.722/G.726		
	Audio Sampling Rate	8/16/32/44.1/48KHz		
	Audio Bit Rate	16~256kbps		
	Two-way Audio	Support		
System	System Compatibility	API, HTTP, TCP, ONVIF Profile G & Q & S & T		
	Storage	Support microSD/SDHC/SDXC Card Local Storage, up to 256G		
	Advanced Function	BLC, HLC, 2D DNR, 3D DNR, Defog, AWB, IP Address Filtering, AGC, Anti-flicker, Corridor Mode, Deblur, Watermark		
	SIP/VoIP Support	Yes, Voice & Video-over-IP		
	Event Trigger	Black/White List, Attributes Event, Motion Detection, Network Disconnection, External Input, Audio Alarm, etc.		
	Event Action	FTP Upload, SMTP Upload, SD Card Record, External Output, SIP Phone, HTTP Notification, etc		
General	Working Temperature	-40°C~60°C		
	Working Humidity	0~95%(Non-condensing)		
	Power Supply	PoE (802.3at) / DC 12V±10%		
	Power Consumption	8W MAX 13W MAX (With IR on)	8W MAX 14W MAX (With IR on)	9W MAX 13W MAX (With IR on)
	Weather Proof	Up to IP67-rated for Weather-resistant Performance		
	Housing	Vandal-proof IK10-rated Metal Housing		
	Surge Protection	4KV		
	Weight	1445.8g		
	Dimensions	320mmX134mmX126mm		
	Warranty	3/5 Years		



	Name	AI Road Traffic Radar Pro Bullet Plus Camera		
Camera	Appearance			
	Model	TS2866-X4TVPE (2MP)	TS2966-X12TVPE (2MP)	TS8266-X4VPE (4K)
	Image Sensor	1/2" Progressive Scan CMOS	1/2.8" Progressive Scan CMOS	1/1.8" Progressive Scan CMOS
	Min. Illumination	Color: 0.002Lux@F1.6 B/W: 0Lux with IR on	Color: 0.005Lux@F1.6 B/W: 0Lux with IR on	Color: 0.009Lux@F1.6 B/W: 0Lux with IR on
	WDR	140dB Super WDR		120dB Super WDR
	Shutter Time	1/100000s~1s		
	Day/Night Mode	Day/Night/Auto/Customize/Schedule		
	S/N	>55dB		
Lens	Lens	8~32mm, 4X Optical Zoom	5.3~64mm, 12X Optical Zoom	8~32mm, 4X Optical Zoom
	Field of View	H44°~H13°/D51°~D15°/V25°~V7°	H61°~H5°/D69°~D5°/V36°~V2°	H44°~H13°/D51°~D15°/V25°~V7°
	Mount	Φ14		
	Focus Control	Auto/Manual		
	Aperture	F1.6~F1.7	F1.6~F2.8	F1.6~F1.7
	Iris Control	Auto		
Road Traffic Management	Max. Vehicle Speed	200km/h		
	Recognition Accuracy	>95%		
	Coverage	Support simultaneous detection of 4 regions		
	Country Region Supported	More than 80 countries and regions		
	Illumination Distance	Up to 70m during the day; Up to 35m during the night with illumination		
	Attributes Identification	Plate Color, Vehicle Type, Vehicle Color, Vehicle Brand, No-plate Vehicle Capture, Vehicle Direction Detection, Speed Detection, Traffic Flow Detection		
	Smart Traffic Function	Evidence Camera Linkage, Specific Lane Management		
	White/Black List	Up to 1000 records inside the camera		
LPR Smart Search	Support			
Radar	Working Frequency	60GHz, 61~62GHz		
	Capture Rate	>99% (Traffic jam >95%)		
	Lane Coverage	1~4 Lanes (Recognition ≥95% individually)		
	Tracking Target	Up to 32		
	Speed Detection Range	±5km/h~±200km/h		
	Speed Detection Accuracy	±0.36km/h		
	Detection Distance	Up to 90m		
	Distance Detection Accuracy	±0.4m		
	Angle Measurement Accuracy	±0.5°		
Installation Height	2~7m			

Road Traffic Management



Interface	Ethernet	1*RJ45 10M/100M Ethernet Port	
	Audio I/O	1/1	
	Alarm I/O	1/1	
Video	Max. Image Resolution	1920x1080	3840x2160
	Primary Stream	60Hz/50Hz: 90fps@(1920x1080, 1280x960, 1280x720, 704x576)	60Hz: 30fps@(3840x2160, 3072x2048, 2592x1944, 2592x1520, 2048x1536, 1920x1080, 1280x960, 1280x720, 704x576) 50Hz: 25fps@(3840x2160, 3072x2048, 2592x1944, 2592x1520, 2048x1536, 1920x1080, 1280x960, 1280x720, 704x576)
	Secondary Stream	60Hz: 60fps@(704x576, 640x480, 640x360, 352x288, 320x240) 50Hz: 50fps@(704x576, 640x480, 640x360, 352x288, 320x240)	
	Tertiary Stream	60Hz: 30fps@(1920x1080, 1280x720, 704x576, 640x480, 640x360, 320x240) 50Hz: 25fps@(1920x1080, 1280x720, 704x576, 640x480, 640x360, 320x240)	
	Video Compression	H.265+/H.265(HEVC)/H.264+/H.264/MJPEG	
	Video Bit Rate	16Kbps~16Mbps(CBR/VBR Adjustable)	
	Privacy Masking	Up to 8 Areas (Mask Area and Mosaic Area are optional)	
	ROI	Up to 8 areas	
	Image Setting	Brightness/Contrast/Saturation/Sharpness	
Network	Network Storage	NAS(Support NFS, SMB/CIFS), ANR	
	Protocol	IPv4/IPv6, ARP, TCP, UDP, RTCP, RTP, RTSP, RTMP, HTTP, HTTPS, DNS, DDNS, DHCP, FTP, NTP, SMTP, SNMP, UPnP, Bonjour, SIP, PPPoE, VLAN, 802.1x, QoS, IGMP, ICMP, SSL	
Audio	Audio Compression	G.711/AAC/G.722/G.726	
	Audio Sampling Rate	8/16/32/44.1/48KHz	
	Audio Bit Rate	16~256kbps	
	Two-way Audio	Support	
System	System Compatibility	API, HTTP, TCP, ONVIF Profile G & Q & S & T	
	Storage	Support microSD/SDHC/SDXC Card Local Storage, up to 256G	
	Advanced Function	BLC, HLC, 2D DNR, 3D DNR, Defog, AWB, IP Address Filtering, AGC, Anti-flicker, Corridor Mode, Deblur, Watermark	
	SIP/VoIP Support	Yes, Voice & Video-over-IP	
	Event Trigger	Black/White List, Attributes Event, Motion Detection, Network Disconnection, External Input, Audio Alarm, etc.	
	Event Action	FTP Upload, SMTP Upload, SD Card Record, External Output, SIP Phone, HTTP Notification, etc	
General	Working Temperature	-40°C~60°C	
	Working Humidity	5~90%(Non-condensing)	
	Power Supply	PoE (802.3at) / DC 12V ± 10%	
	Power Consumption	9W MAX 16W MAX (With IR on)	9W MAX 15W MAX (With IR on)
	Weather Proof	Up to IP67-rated for Weather-resistant Performance	
	Surge Protection	4KV	
	Weight	1623g	
	Dimensions	320mmX134mmX171mm	
	Warranty	3/5 Years	




Name		AI Road Traffic Supplement Light Pro Bullet Plus Camera			
Camera	Appearance				
	Model	TS2866-X4TWE /W (2MP)	TS2866-X4TWE /R (2MP)	TS8266-X4WE /W (4K)	TS8266-X4WE /R (4K)
	Image Sensor	1/2" Progressive Scan CMOS		1/1.8" Progressive Scan CMOS	
	Min. Illumination	Color: 0.002Lux@F1.6 B/W: 0Lux with IR on		Color: 0.009Lux@F1.6 B/W: 0Lux with IR on	
	WDR	140dB Super WDR		120dB Super WDR	
	Shutter Time	1/100000s~1s			
	Day/Night Mode	Day/Night/Auto/Customize/Schedule			
	S/N	>55dB			
	Lens	Lens	8~32mm, 4X Optical Zoom		
Field of View		H44°~H13°/D51°~D15°/V25°~V7°			
Mount		Φ14			
Focus Control		Auto/Manual			
Aperture		F1.6-F1.7			
Iris Control		Auto			
Road Traffic Management	Max. Vehicle Speed	200km/h			
	Recognition Accuracy	>95%			
	Coverage	Support simultaneous detection of 4 regions			
	Country Region Supported	More than 80 countries and regions			
	Illumination Distance	Up to 70m during the day; Up to 45m during the night with illumination			
	Attributes Identification	Plate Color, Vehicle Type, Vehicle Color, Vehicle Brand, No-plate Vehicle Capture, Vehicle Direction Detection			
	Smart Traffic Function	Evidence Camera Linkage, Specific Lane Management			
	White/Black List	Up to 1000 records inside the camera			
LPR Smart Search	Support				
Illuminator	Supplement Light	White LED Light	IR LED Light	White LED Light	IR LED Light
	Light Bead	6 (For White LED Light)	9 (For IR LED Light)	6 (For White LED Light)	9 (For IR LED Light)
	Light Control	Auto/Always On/Off/Customize			
Interface	Ethernet	1*RJ45 10M/100M Ethernet Port			
	Audio I/O	1/1			
	Alarm I/O	2/2			
	Wiegand	Standard Wiegand 26-bit			

Road Traffic Management



Video	Max. Image Resolution	1920x1080		3840x2160	
	Primary Stream	60Hz/50Hz: 90fps@(1920x1080, 1280x960, 1280x720, 704x576)		60Hz: 30fps@(3840x2160, 3072x2048, 2592x1944, 2592x1520, 2048x1536, 1920x1080, 1280x960, 1280x720, 704x576) 50Hz: 25fps@(3840x2160, 3072x2048, 2592x1944, 2592x1520, 2048x1536, 1920x1080, 1280x960, 1280x720, 704x576)	
	Secondary Stream	60Hz: 60fps@(704x576, 640x480, 640x360, 352x288, 320x240) 50Hz: 50fps@(704x576, 640x480, 640x360, 352x288, 320x240)			
	Tertiary Stream	60Hz: 30fps@(1920x1080, 1280x720, 704x576, 640x480, 640x360, 320x240) 50Hz: 25fps@(1920x1080, 1280x720, 704x576, 640x480, 640x360, 320x240)			
	Video Compression	H.265+/H.265(HEVC)/H.264+/H.264/MJPEG			
	Video Bit Rate	16Kbps~16Mbps(CBR/VBR Adjustable)			
	Privacy Masking	Up to 8 Areas (Mask Area and Mosaic Area are optional)			
	ROI	Up to 8 areas			
	Image Setting	Brightness/Contrast/Saturation/Sharpness			
Network	Network Storage	NAS(Support NFS, SMB/CIFS), ANR			
	Protocol	IPv4/IPv6, ARP, TCP, UDP, RTCP, RTP, RTSP, RTMP, HTTP, HTTPS, DNS, DDNS, DHCP, FTP, NTP, SMTP, SNMP, UPnP, Bonjour, SIP, PPPoE, VLAN, 802.1x, QoS, IGMP, ICMP, SSL			
Audio	Audio Compression	G.711/AAC/G.722/G.726			
	Audio Sampling Rate	8/16/32/44.1/48KHz			
	Audio Bit Rate	16~256kbps			
	Two-way Audio	Support			
System	System Compatibility	API, HTTP, TCP, Wiegand Protocol, ONVIF Profile G & Q & S & T			
	Storage	Support microSD/SDHC/SDXC Card Local Storage, up to 256G			
	Advanced Function	BLC, HLC, 2D DNR, 3D DNR, Defog, AWB, IP Address Filtering, AGC, Anti-flicker, Corridor Mode, Deblur, Watermark			
	SIP/VoIP Support	Yes, Voice & Video-over-IP			
	Event Trigger	Black/White List, Attributes Event, Motion Detection, Network Disconnection, External Input, Audio Alarm, etc.			
	Event Action	FTP Upload, SMTP Upload, SD Card Record, External Output, SIP Phone, HTTP Notification, etc			
General	Working Temperature	-40°C~60°C			
	Working Humidity	5~90%(Non-condensing)			
	Power Supply	DC 12V / 3A ± 10% (Non-PoE)			
	Power Consumption	4W MAX 28W MAX (For White LED Light)	4W MAX 28W MAX (For IR LED Light)	5W MAX 31W MAX (For White LED Light)	5W MAX 31W MAX (For IR LED Light)
	Surge Protection	4KV			
	Weather Proof	Up to IP67-rated for Weather-resistant Performance			
	Housing	Vandal-proof IK10-rated Metal Housing (Without Supplement Light)			
	Surge Protection	4KV			
	Weight	1445.8g 2100g (With Supplement Light)			
	Dimensions	282mmX108mmX120mm 282mmX108mmX225mm (With Supplement Light)			
	Warranty	3/5 Years			



	Name	AI Road Traffic PTZ Bullet Camera
Camera	Appearance	
	Model	TS2961-X12TPE (2MP)
	Image Sensor	1/2.8" Progressive Scan CMOS
	Min. Illumination	Color: 0.005Lux@F1.6 B/W: 0Lux with IR on
	WDR	140dB Super WDR
	Shutter Time	1/100000s~1s
	Digital Zoom	16X
	Day/Night Mode	Day/Night/Auto/Customize/Schedule
	S/N	>55dB
Lens	Focal Length	5.3~64mm, 12X Optical Zoom
	Zoom Speed	Approx 4s (Wide-Tele)
	Field of View	H61°~H5°/D69°~D5°/V36°~V2°
	Focus Control	Auto/Semi-Auto/Manual
	Minimum Working Distance	1000/1500mm (Wide/Tele)
	Aperture	F1.6~F2.8
	Iris Control	Auto
Road Traffic Management	Max. Vehicle Speed	200km/h
	Recognition Accuracy	>95%
	Coverage	Support simultaneous detection of 4 regions
	Country Region Supported	More than 80 countries and regions
	Illumination Distance	Up to 175m during the day; Up to 60m during the night with illumination
	Attributes Identification	Plate Color, Vehicle Type, Vehicle Color, Vehicle Brand, No-plate Vehicle Capture, Vehicle Direction Detection,
	Smart Traffic Function	Evidence Camera Linkage, Specific Lane Management
	White/Black List	Up to 1000 records inside the camera
	LPR Smart Search	Support
Interface	Ethernet	1*RJ45 10M/100M Ethernet Port
	Audio I/O	1/1 (Optional)
	Alarm I/O	1/1 (Optional)
PTZ	Pan Range/Pan Speed	360°endless / Pan Manual Speed: 0.1°~50°/s, Pan Preset Speed: 50°/s
	Tilt Range/Tilt Speed	-45°~30° / Tilt Manual Speed: 0.1°~25°/s, Tilt Preset Speed: 25°/s
	Proportional Zoom	Support
	Preset Quantity	300
	Patrol	8 Patrols, up to 48 presets each patrol
	Pattern	4 Patterns
	Power Off Memory	Support
	Other Function	Auto Scan, Auto Home, Preset Freezing, 3D Positioning, PTZ Limits, Initial Position

Road Traffic Management

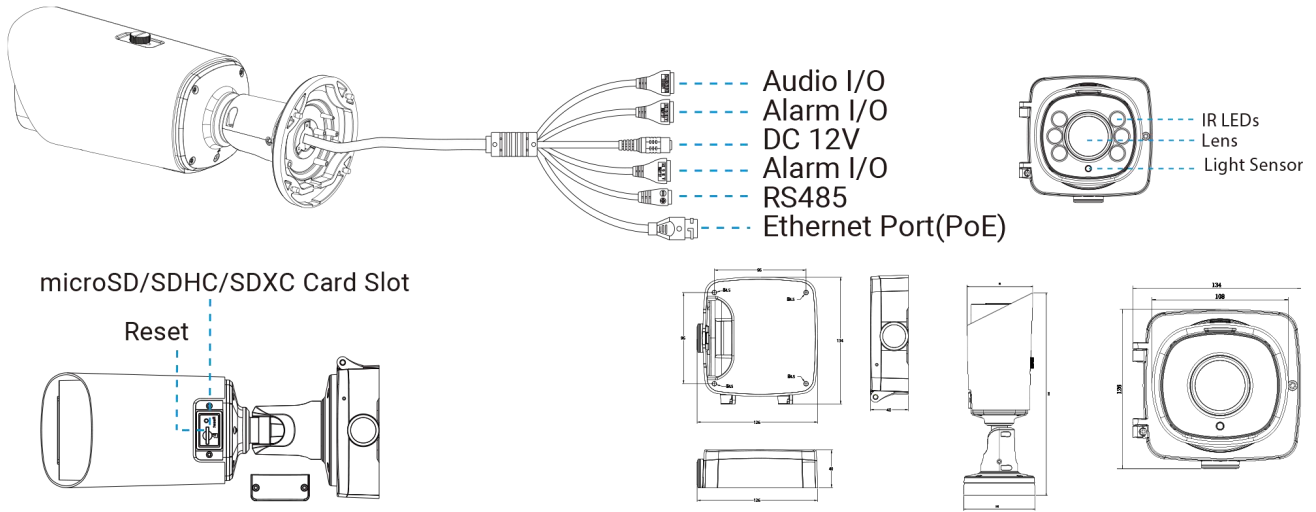


Video	Max. Image Resolution	1920x1080
	Primary Stream	60Hz/50Hz: 90fps@(1920x1080, 1280x960, 1280x720, 704x576)
	Secondary Stream	60Hz: 60fps@(704x576, 640x480, 640x360, 352x288, 320x240) 50Hz: 50fps@(704x576, 640x480, 640x360, 352x288, 320x240)
	Tertiary Stream	60Hz: 30fps@(1920x1080, 1280x720, 704x576, 640x480, 640x360, 320x240) 50Hz: 25fps@(1920x1080, 1280x720, 704x576, 640x480, 640x360, 320x240)
	Video Compression	H.265*/H.265(HEVC)/H.264*/H.264/MJPEG
	Video Bit Rate	16Kbps~16Mbps(CBR/VBR Adjustable)
	Privacy Masking	Up to 8 Areas (Mask Area and Mosaic Area are optional)
	ROI	Up to 8 areas
	Image Setting	Brightness/Contrast/Saturation/Sharpness
Network	Network Storage	NAS(Support NFS, SMB/CIFS), ANR
	Protocol	IPv4/IPv6, ARP, TCP, UDP, RTCP, RTP, RTSP, RTMP, HTTP, HTTPS, DNS, DDNS, DHCP, FTP, NTP, SMTP, SNMP, UPnP, Bonjour, SIP, PPPoE, VLAN, 802.1x, QoS, IGMP, ICMP, SSL
Audio	Audio Compression	G.711/AAC/G.722/G.726
	Audio Sampling Rate	8/16/32/44.1/48KHz
	Audio Bit Rate	16~256kbps
	Two-way Audio	Support
System	System Compatibility	API, HTTP, TCP, ONVIF Profile G & Q & S & T
	Storage	Support microSD/SDHC/SDXC Card Local Storage, up to 256G
	Advanced Function	BLC, HLC, 2D DNR, 3D DNR, Defog, AWB, IP Address Filtering, AGC, Anti-flicker, Corridor Mode, Deblur, Watermark
	SIP/VoIP Support	Yes, Voice & Video-over-IP
	Event Trigger	Black/White List, Attributes Event, Motion Detection, Network Disconnection, External Input (Optional), Audio Alarm (Optional), etc.
	Event Action	FTP Upload, SMTP Upload, SD Card Record, External Output (Optional), SIP Phone, White LED, PTZ Motion, HTTP Notification, etc.
General	Working Temperature	-40°C~60°C
	Working Humidity	0~95%(Non-condensing)
	Power Supply	PoE (802.3at) / DC 12V/2A±10%
	Power Consumption	15W MAX 19W MAX (With IR on)
	Weather Proof	Up to IP66-rated for Weather-resistant Performance
	Weight	2Kg (Wall Mount) / 1.8Kg (Pedestal Mount)
	Dimensions	160mmX273.5mmX210mm (Wall Mount) /218mmX120mmX172mm (Pedestal Mount)
	Warranty	2 Years / 3 Years (Optional)

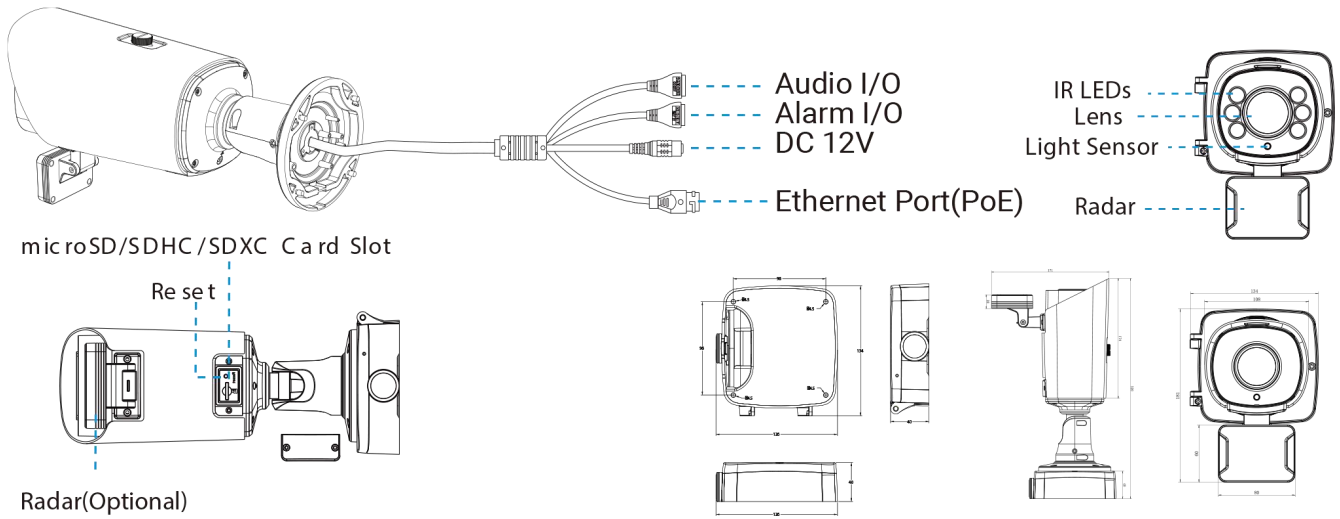


Structure Diagrams

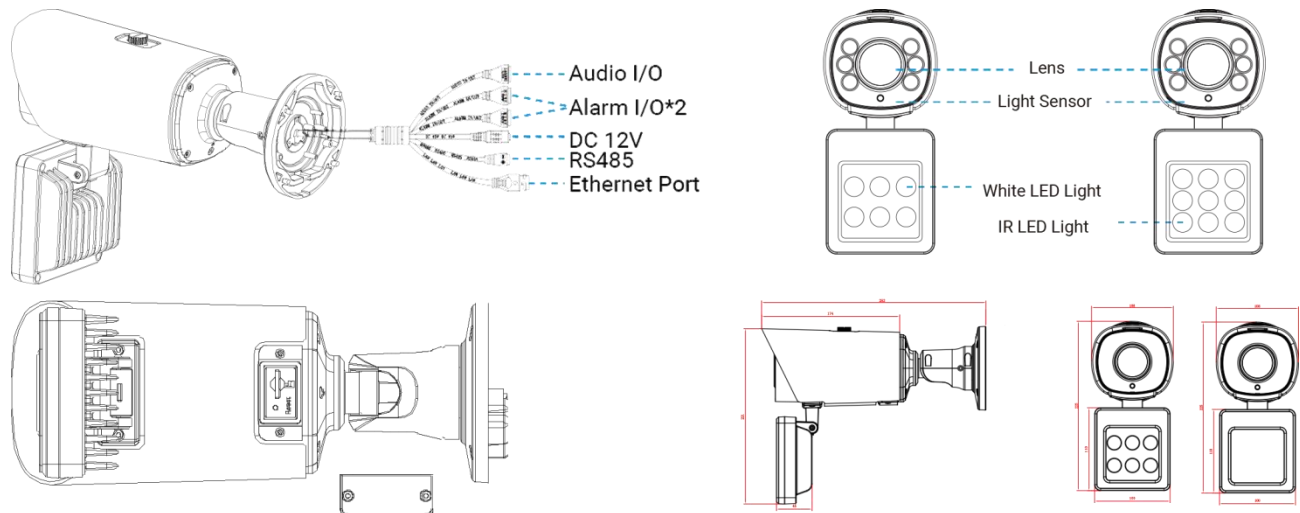
AI Road Traffic Pro Bullet Plus Camera



AI Road Traffic Radar Pro Bullet Plus Camera

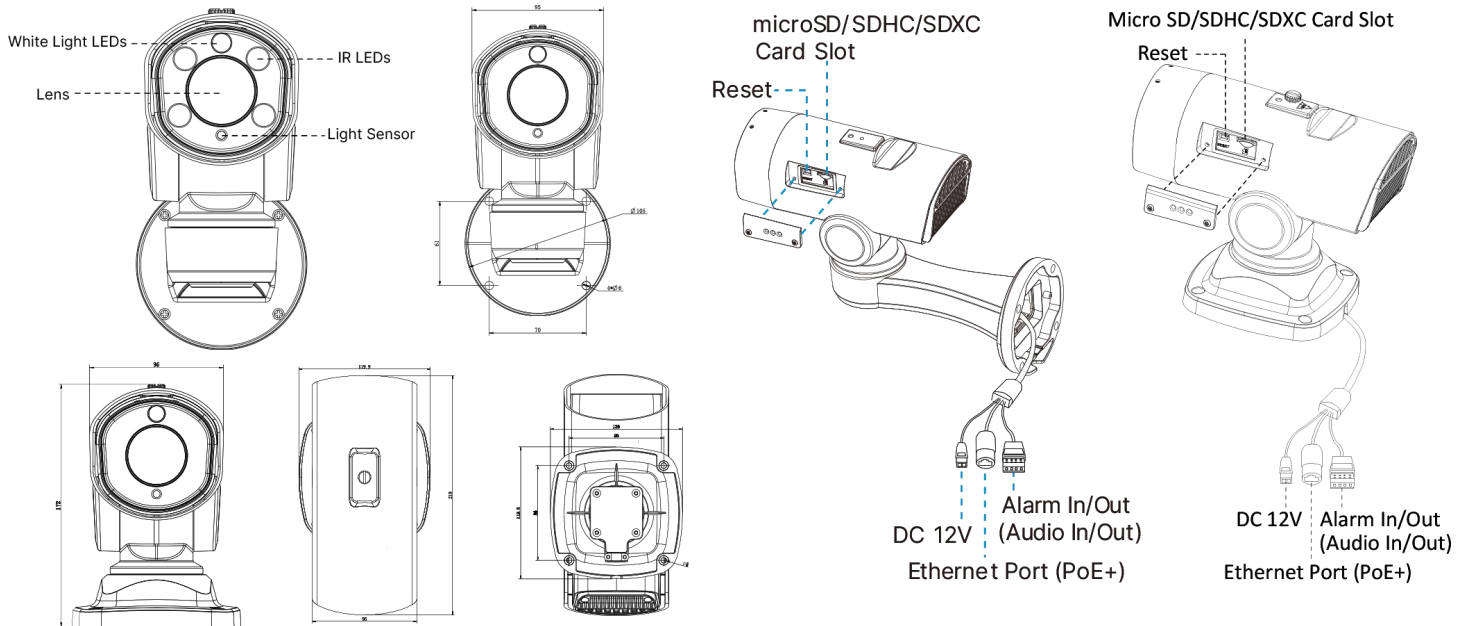


AI Road Traffic Supplement Light Pro Bullet Plus Camera





AI Road Traffic PTZ Bullet Camera



Accessories Support

AI Road Traffic Pro Bullet Plus Camera/AI Road Traffic Radar Pro Bullet Plus Camera



A62 Junction Box

Weight: 510g

Dimensions: 134*126*40mm



A01 Pole Mount

Weight: 720g

Dimensions: 170*51.5*152.6mm



A03 External Corner Bracket

Weight: 900g

Dimensions: 170*152.5*76.3mm

AI Road Traffic Pro Bullet Plus Camera/AI Road Traffic Radar Pro Bullet Plus Camera



A62 Junction Box

Weight: 510g

Dimensions: 134*126*40mm



A01 Pole Mount

Weight: 720g

Dimensions: 170*51.5*152.6mm



A03 External Corner Bracket

Weight: 900g

Dimensions: 170*152.5*76.3mm

