

# G1016G

16-Port Gigabit Unmanaged Rackmount Switch

# G1016G

## 16-Port Gigabit Unmanaged Rackmount Switch

---

### Products Description

G1016G is a green energy-conservation layer2 switch . It is specially designed to build a fast, convenient and easy-maintained wired access network. G1016G apply with the world's leading chipset vendor Broadcom solution, which brings a strong switch performance. The all-steel-shell body improves the heat dissipation and ensures the stability. Professional port lightning-proof enables to reduce the damage of severe weather. It supports full wire-speed non-blocking forwarding and port auto-flip. With high enterprise-level art, it is the ideal solution to build your gigabit wired access network (SMBs, hotels, Video Surveillance).



- 16 10/100/1000Mbps RJ45 ports
- 19-inch rack-mountable, 1U steel case
- Plug and play, Without configuration

## Key Feature

- Compliant with IEEE802.3, IEEE802.3u, IEEE802.3x, IEEE802.3ab
- Store & forward, share memory, non-blocking architecture
- Supports MAC address self-learning and auto MDI/MDIX
- Provide 16 10/100/1000Mbps auto-negotiation ports
- Supports full-duplex 802.3x flow control and half-duplex backpressure flow control
- Supports 8K MAC address list, MAC address learning and auto-ageing
- Supports port Inductive Lightning Protection up to 4KV
- Supports Power Inductive Lightning Protection up to 6KV
- Supports loop detection and prevention
- Built-in switching power adapter, support AC 110-240V 50/60Hz input
- Fanless design
- Standard 19-inch rack-mountable, 1U steel case
- Plug and play, no need configuration

## Product Features



### Full wire-speed

Provide 16 10/100/1000M auto-negotiation RJ45 ports. All ports have the the wire-speed forwarding capability and support IEEE 802.3x full-duplex flow control and half-duplex backpressure flow control.



### Excellent Lightning-Proof design

Integrated professional lightning-proof circuit which supports port lightning-proof (common mode protection 4KV)and power lightning-proof (common mode protection 6KV). Effectively reduce the damage to the network system caused by the thundery weather.



### Loop guard

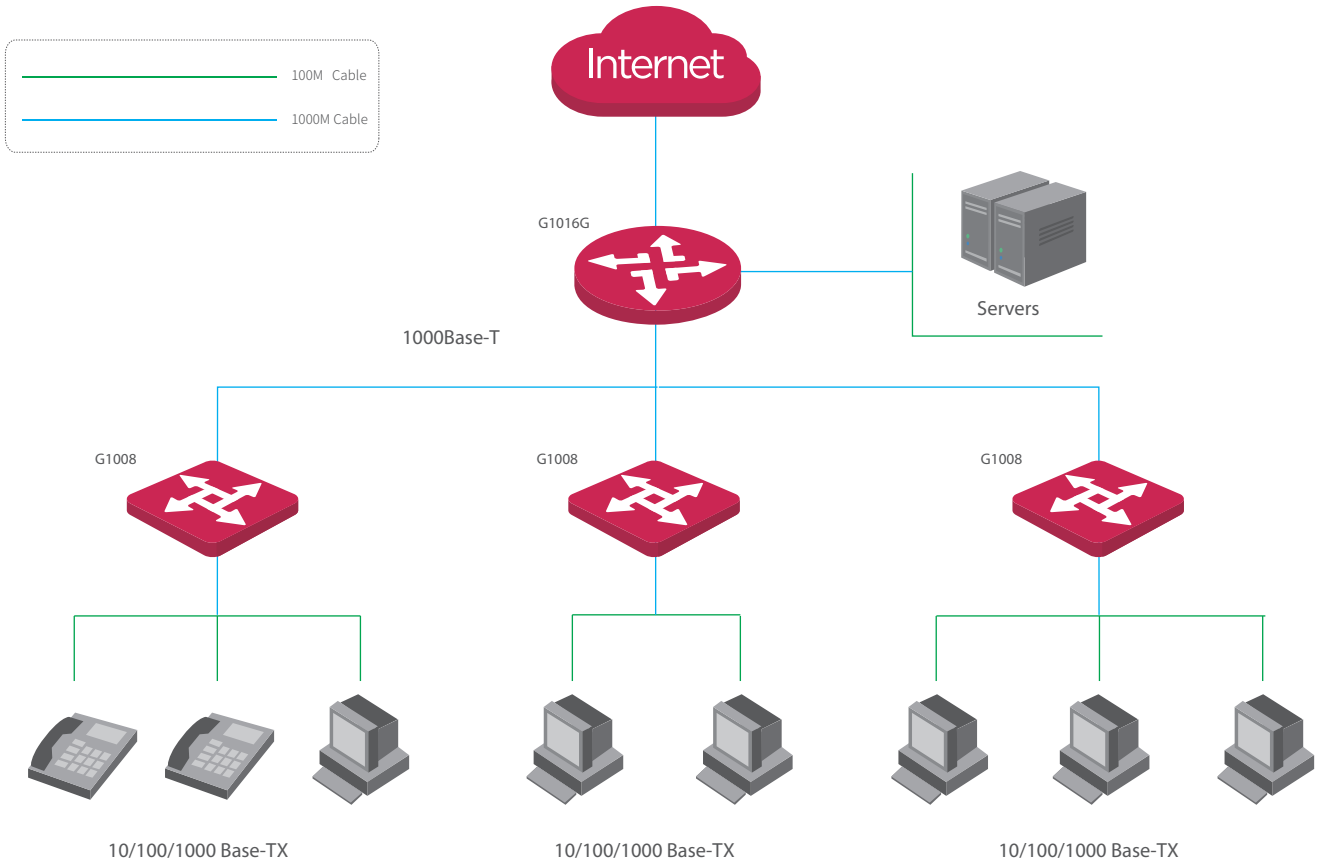
Supports loop detection and prevention, adopts advanced loop algorithm to prevent loop effectively.



### Easy to use

Plug-and-play, which helps you quickly build Gigabit wired network and greatly simplify the management and maintenance of equipment, It supports desktop and standard 19-inch rack mounted installation with two pairs of rack-mounted hangers, which can be easily installed in a standard 19-inch machine room cabinet.

# Application Scenarios



Product Model	G1016G
Hardware Features	
Standards&Protocols	IEEE 802.3, IEEE 802.3u, IEEE 802.3ab, IEEE 802.3x
MTBF	≥100,000 hours
LED	16*Link/Ack, 1*Power
Interface	16*10/100/1000M J45 ports (Auto MDI/MDIX)
Transfer Method	Store-and-Forward
Switching Capacity	32 Gbit/s
Packet Forwarding Rate	23.8Mpps
Address Table	8K MAC
Power	100-240VAC, 50/60Hz
Dimension (L×W×H)	440mm*178mm*44m
Power Consumption	<9.2W
Fan Quantity	Fanless
Environment	Operating Temperature: 0°C~40°C Storage Temperature: -40°C~70°C Operating Humidity: 10%~90% non-condensing Storage Humidity: 5%~90% non-condensing
Lightning Proof	RJ45 Ports>4KV, Power supply>6KV
Advance Feature	Loop Detection&Prevention
Certification	FCC, CE, RHOS

**IP-COM**  
World Wide Wireless

## Headquarters

IP-COM Networks Co.,Ltd.

Tel: +86 755-27653089

Fax: +86 755-27657178

Email: [marketing@ip-com.com.cn](mailto:marketing@ip-com.com.cn)

Website: [www.ip-com.com.cn](http://www.ip-com.com.cn)

ADD: Tower E3,No1001,Zhongshanyuan Road,Nanshan District,Shenzhen,China.

