

G4 Pro

Multi-Biometric Attendance & Access Control Terminal with Enhanced Visible Light Facial Recognition



G4PRO is a multi-biometric identification terminal which features ZKTeco's innovative Enhanced Visible Light Facial Recognition and SilkID fingerprint sensor technology. The device with latest technologies can perform recognition in a distance from 0.5m to 3m and will function automatically when face are detected so as to deliver higher recognition quality in terms of speed and accuracy than the previous near IR facial recognition. With the applied Deep Learning algorithm, pose angle tolerance and anti-spoof function have been greatly enhanced against dynamic environment and various spoofing attacks. Also with the world's cutting-edge 3D Neuron Fingerprint Algorithm, it precisely authenticates dry, wet, or rough fingerprints efficiently and accurately.

Features



Revolutionary SilkID FingerPrint Sensor



Proactive Facial Recognition



Wide Pose Angle Acceptance



Enhanced Visible Light Facial Recognition



New Height of Anti-Spoofing



Touchless for Better Hygiene



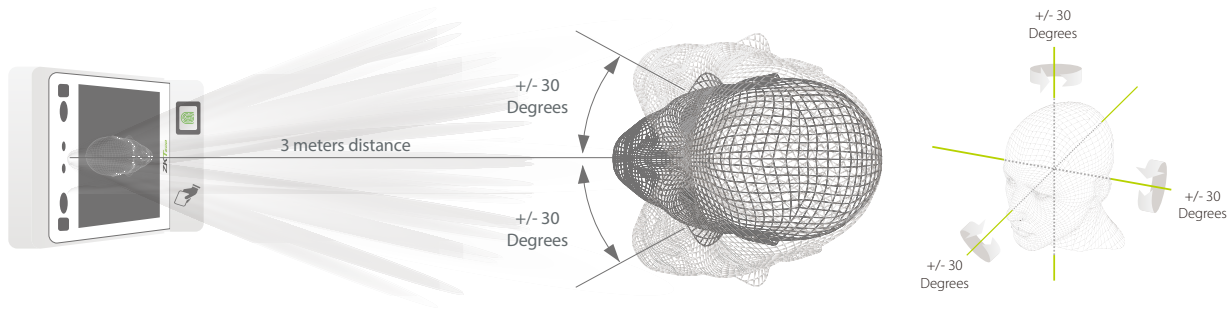
Multiple Verifications: Face/FingerPrint/Card/Password



Speedy Recognition

Recognition distance up to 3m long and extra wide angle recognition

The recognition distance has been greatly extended up to 3 meters long, which significantly improves maximum traffic rate. While most of algorithms only support 15-degree angle facial recognition, ZKBioFace supports 30-degree angle facial recognition.



Specifications Ⓞ: GL Premium Feature)

Capacity

Users	10,000
Ⓞ Face Template	10,000
Fingerprints	10,000
ID Cards	10,000
Transactions	1,000,000

Hardware

High Performance Android Industrial CPU
2GB DDR3 RAM
16GB ROM
Ⓞ SilkID FingerPrint Sensor
7-inches Touch Screen, 1280*800 Pixel
Ⓞ 2NP Binocular Camera

Compatibility

BioTime8.0
ZKBiosecurity (Time Attendance)

Communication

TCP/IP
USB Host
Wiegand Input
Wiegand Output

Standard Functions

ID Card / Work Code / ADMS
DST / Schedule Bell /
Automatic Status Switch
Record Query / Photo ID
Optional Functions: 13.56MHz IC Card

Additional Info

Algorithms	ZKFace V10.0 & ZKFinger V12.0
Working Temperature	0°C~+50°C
Working Humidity	<90%
Dimensions	264*120*51mm
Facial Recognition Speed	≤1s
Facial Recognition Distance	0.5m~3m
Power	DC12V 3A

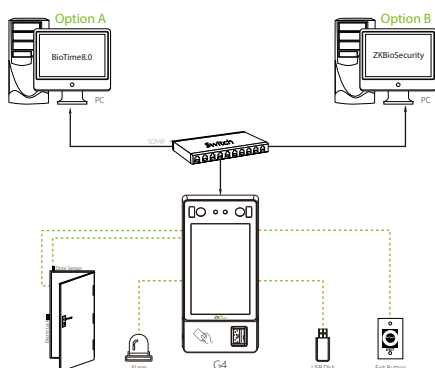
Access Control Interface

Lock Relay Output
Exit Button
Alarm Output
Door Sensor
External Bell

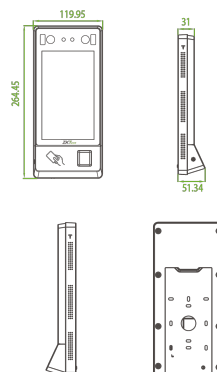
Special Functions

Ⓞ Enhanced Visible Light Facial Recognition
Ⓞ Liveness Face Detection
Multiple Biometric Verification Modes

Configuration



Dimensions (mm)



User Interface

