



# AX3000 Wi-Fi 6 Air Router

Ultra-Thin Design, Flexible Installation



Archer Air R5

Ultra-thin Design





| EasyMesh-Compatible<sup>†</sup>

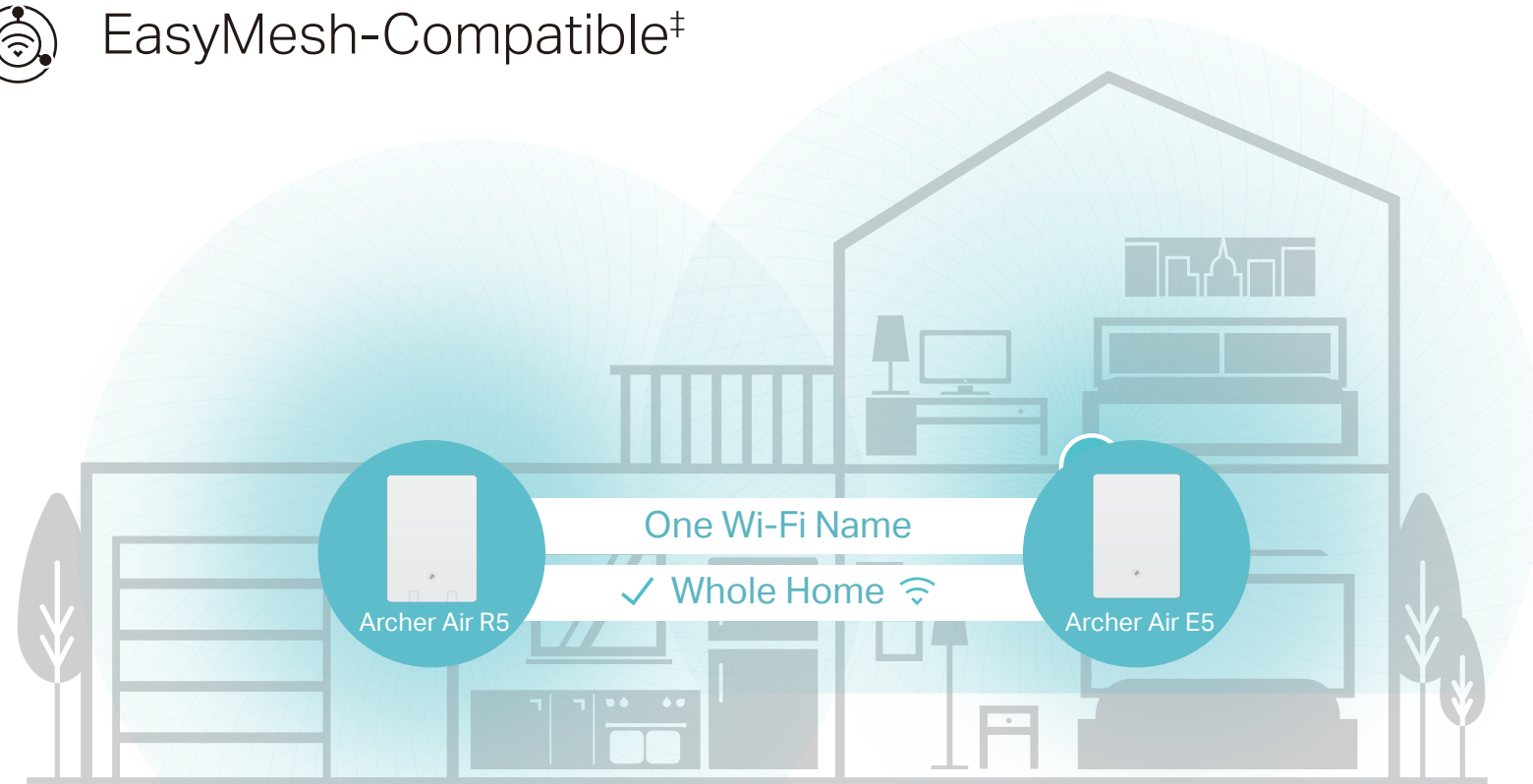
| Smart Antennas

| HomeShield

# Highlights

## One-Touch Mesh Networking via WPS Button

-  One Wi-Fi Name
-  Smart Roaming
-  Unified Management
-  EasyMesh-Compatible<sup>†</sup>



Mesh networking creates smooth, fast, stable roaming. Archer Air R5 can build an EasyMesh network with extenders that use EasyMesh technology. It also works with other TP-Link OneMesh products to create a TP-Link OneMesh network. Eliminate Wi-Fi dead zones, expand your network, and fill your entire home with high-speed Wi-Fi.

## Wi-Fi 6<sup>E</sup> Faster. Broader. Unstoppable.

Reaches incredible speeds up to 3 Gbps (2402 Mbps on 5 GHz band and 574 Mbps on 2.4 GHz band) for faster streaming and gaming like you have never experienced before.<sup>†</sup>



### Super Fast Wi-Fi

Enjoy full access to 8K streaming and high-speed downloading with HE160 on the 5 GHz band providing doubled bandwidth.



### Connect Numerous Devices

Allow more applications to run at the same time. OFDMA transmits data to multiple devices simultaneously across 4 streams, drastically reducing latency.



### Smart Power Saving

Conserve the power of your mobile devices by scheduling the connection time of battery-powered devices with Target Wake Time.



### Backwards Compatible

Take your Wi-Fi to the next level while being backwards compatible with 802.11a/b/g/n/ac Wi-Fi standards.

# Highlights

## TP-Link HomeShield

TP-Link's premium security services keep your home network safe with cutting-edge fetures for network and IoT protection.<sup>§</sup>



### Network Protection

Detect cyber threats to keep your privacy and connected devices well protected.



### Quality of Service (QoS)

Prioritize your bandwidth needs to get a better networking experience.



### Parental Controls

Manage online time and block inappropriate content to keep families healthy online.



### Comprehensive Reports

Gain full statistics and insights to help you know your home network better.

## Smart Antennas Boosts Wi-Fi Coverage

Built-in smart antennas use intelligent algorithms to auto-detect your devices and concentrate strong signals towards them to provide the optimal performance.

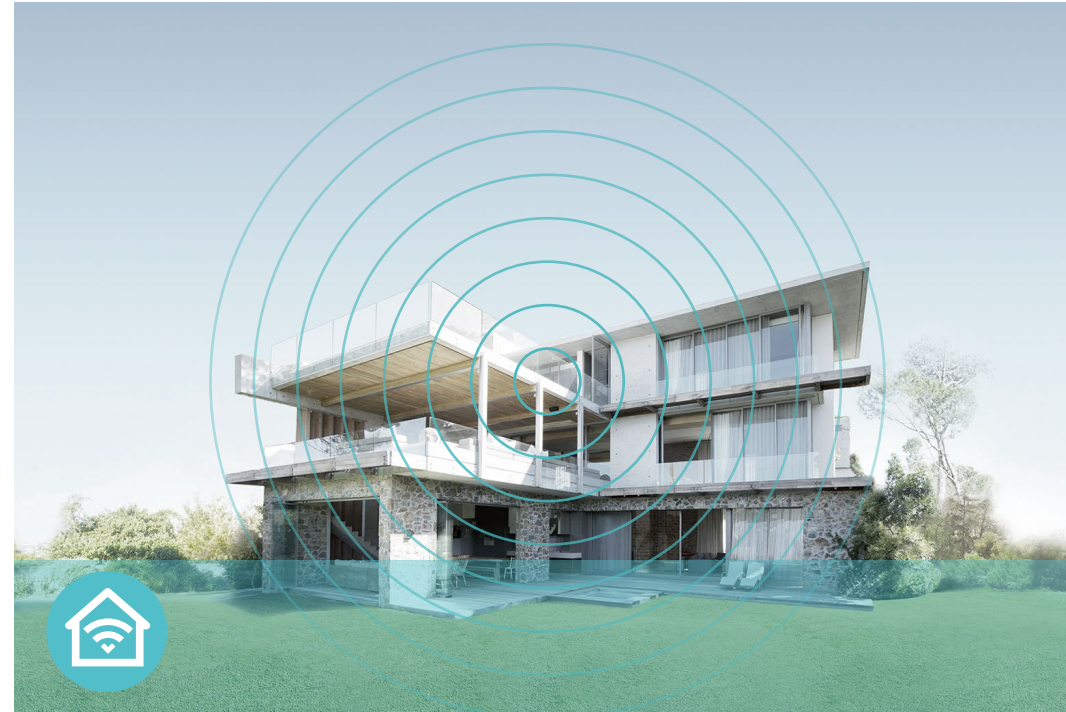


# Features



## Speed

- **Super-Fast Wi-Fi** – 3 Gbps Wi-Fi for faster browsing, streaming, and downloading—all at the same time
- **Connect More, Stay Fast** – The new Wi-Fi 6 standard reduces congestion and quadruples your average throughput.



## Wi-Fi Range

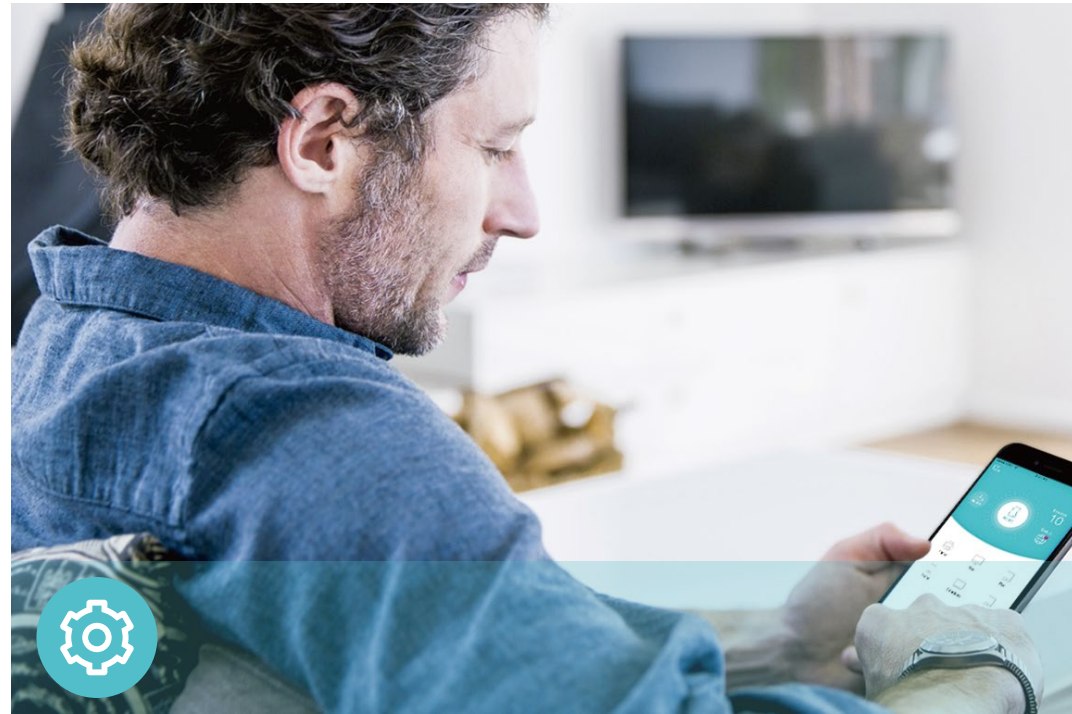
- **Ultimate Range Wi-Fi** – Internal antennas deliver a Wi-Fi signal to every corner of your home, making all of your connections more efficient and stable
- **Beamforming Technology** – Concentrates Wi-Fi signals towards individual devices to ensure stronger connections
- **Seamless EasyMesh network** – Transfer between signals without any drops or lag and manage your whole network using a centralized panel



## Reliability

- **Secure VPN Access** – Connects to a private network with a safe and secure OpenVPN and PPTP VPN connection
- **Airtime Fairness** – Balances bandwidth of connected devices to improve overall throughput and efficiency
- **Smart Connect** – Intelligently switches each device's connection to the optimum available Wi-Fi band

# Features



## Ease of Use

- Intuitive Web UI – Ensures quick and simple installation without hassle
- WPS (Wi-Fi Protected Setup) – Help you to quickly and securely connect your devices to the router's network with a tap
- Hassle-free Management with Tether App – Network management is made easy with the TP-Link Tether app, available on any Android and iOS device



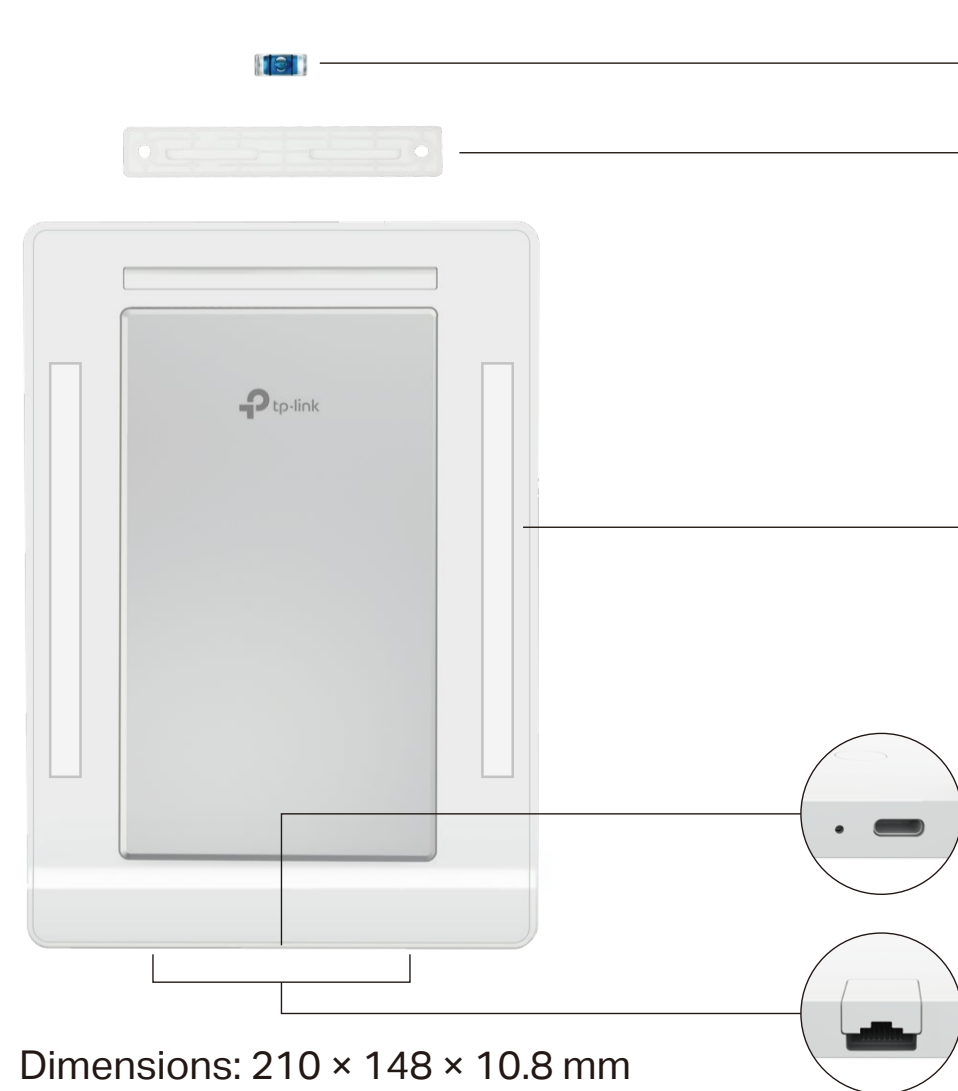
## Security

- HomeShield – TP-Link's premium security services keep your home network safe with cutting-edge features for network and IoT protection
- Guest Network – Provides separate access for guests to secure the home network
- Access Control – Establishes a whitelist or blacklist to allow or restrict certain devices to access the internet
- Encryptions for Secure Network – WPA/WPA2-Personal, WPA2/WPA3-Personal, WPA/WPA2-Enterprise encryptions provide active protection against security threats

# Specifications

## Hardware

- Ethernet Ports:  
1 × Gigabit WAN Port + 1 × Gigabit LAN Port
- LED & Button: Status LED/ WPS button (on front panel)



**An Level**  
Ensuring horizontal installation

**A Plastic Bracket**  
Hang the router on the wall

**3M Adhesives On the Two Sides**  
Paste the router to the wall

**Type-C Power Port**

**Two Gigabit Ethernet Ports**

## Wireless

- **Wireless:** 2402 Mbps (5 GHz) + 574 Mbps (2.4 GHz), compatible with 11a/b/g/n/ac Wi-Fi standards
- **Frequency:** 2.4 GHz and 5 GHz
- **Reception Sensitivity:**  
2.4GHz:  
11g 6Mbps:-96dBm, 11g 54Mbps:-78dBm  
11n HT20 MCS7:-76dBm, 11n HT40 MCS7:-72dBm  
11ax HE20 MCS0: -95dBm, 11ax HE20 MCS11: -65dBm  
11ax HE40 MCS0: -93dBm, 11ax HE40 MCS11: -62dBm  
5GHz:  
11a 6Mbps:-97dBm, 11a 54Mbps:-78dBm  
11ac HT20 MCS8:-74dBm, 11ac HT40 MCS9:-69dBm, 11ac HT80 MCS9:-65dBm  
11ax HE20 MCS0: -97dBm, 11ax HE20 MCS11: -66dBm  
11ax HE40 MCS0: -94dBm, 11ax HE40 MCS11: -63dBm  
11ax HE80 MCS0: -91dBm, 11ax HE80 MCS11: -60dBm  
11ax HE160 MCS0: -88dBm, 11ax HE160 MCS11: -58dBm
- **Wireless Function:** Enable/Disable Wireless Radio, WMM, Wireless Statistics
- **Wireless Security:** WPA/WPA2-Personal, WPA2/WPA3-Personal, WPA/WPA2-Enterprise

# Specifications

## Software

- WAN Type: Dynamic IP/Static IP/PPPoE/PPTP/L2TP
- Management: Access Control, Local Management, Remote Management
- DHCP: Server, DHCP Client List, Address Reservation
- NAT Forwarding: Port Forwarding, Port Triggering, UPnP, DMZ
- Dynamic DNS: DynDns, NO-IP, TP-Link
- Network Access Management: Access Control, Parental Controls, Local Management Control
- Firewall Security: SPI Firewall, IP and MAC Address Binding
- Protocols: IPv4, IPv6
- Guest Network: 2.4 GHz Guest Network, 5 GHz Guest Network
- VPN Server: OpenVPN, PPTP VPN

## Others

- Certification:  
CE, RoHS
- System Requirements:  
Internet Explorer 11+, Firefox 12.0+, Chrome 20.0+, Safari 4.0+, or other JavaScript-enabled browser  
Cable or DSL Modem (if needed)  
Subscription with an internet service provider (for internet access)
- Environment:  
Operating Temperature: 0°C~40°C (32°F ~104°F)  
Operating Humidity: 10%~90% non-condensing
- Package Contents  
Wireless Router Archer Air R5  
Quick Installation Guide  
Power Adapter  
Plastic Bracket  
Gigabit Network cable  
Installation Accessories



For more information, please visit

<https://www.tp-link.com/home-networking/wifi-router/archer-air-r5/>

or scan the QR code left

<sup>†</sup>Use of 802.11ax (Wi-Fi 6) and its features including OFDMA, HE160, and TWT requires clients to also support corresponding features. The 160 MHz bandwidth may be unavailable in the 5 GHz band in some regions/countries due to regulatory restrictions. Actual power reduction by Target Wake Time may vary as a result of network conditions, client limitations, and environmental factors.

<sup>†</sup>TP-Link EasyMesh-compatible products can network with other devices that use EasyMesh. Failed connections may be due to firmware conflicts of different vendors. The EasyMesh-Compatible function is still being developed on some models and will be supported in subsequent software updates.

<sup>§</sup>HomeShield includes the Free Basic Plan. Fees apply for the Pro Plan. Visit <https://www.tp-link.com/homeshield> for more information.

<sup>^</sup>Use of WPA3 requires clients to support WPA3.

<sup>\*</sup>8mm refers to the thickness of the majority of the device. Some portions may exceed this size out of necessity.

<sup>\*\*</sup>Pictures are for reference only. If there are any inconsistencies between the product image and the actual product, the actual product shall prevail.

©2023 TP-Link