

# SDM-50

Protectie de cablu

## Imagine



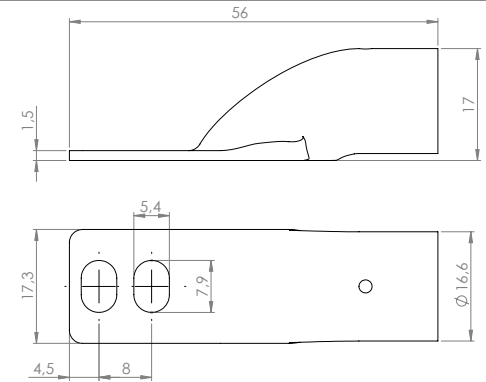
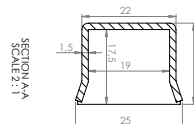
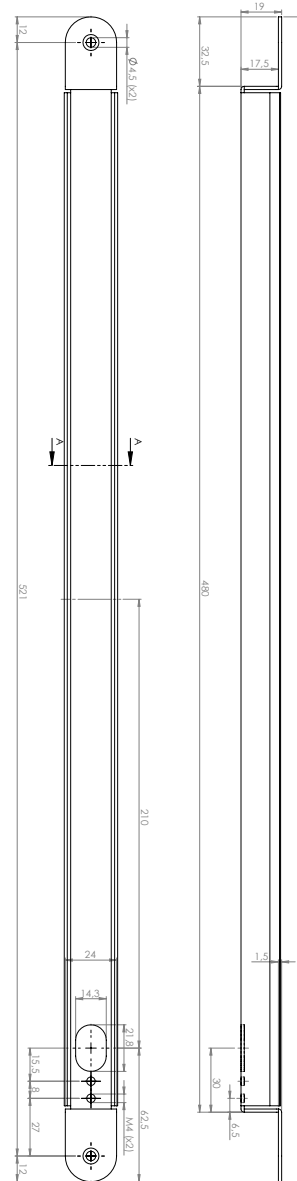
## Descriere

SDM-50 este o protectie de cablu din inox care este destinata protectiei firelor de cablu expuse. Aceasta protectie de cablu se monteaza incastrabil.

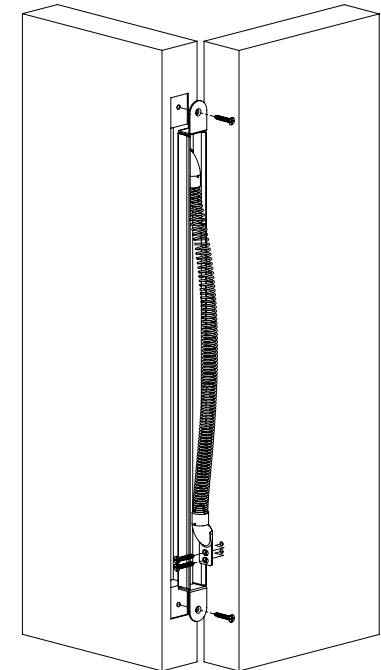
## Specificati tehnice

•Lungime totala:	545 [mm]
•Distanța dintre gauri:	521 [mm]
•Adancime:	17,5 [mm]
•Latime:	24 [mm]
•Diametrul interior:	10 [mm]
•Diametrul exterior:	13,7 [mm ]
•Instalare:	ingropata

## Dimensiuni



## Schema de instalare



## Observatii



EEE FAC OBIECTUL UNEI  
COLECTARI SEPARATE