



## DESCRIPTION

CAT6A SFTP SHIELDED PATCH CABLE  
26AWG STRANDED LSZH JACKET

## FEATURES

- High-Performance Patch Cable
- Suitable for 10Gbps Ethernet
- Rated for 500MHz , Fluke Pass
- Exceeds TIA/EIA-568, ISO/IEC 11801
- CE ROHS Approval

## APPLICATION

Rated For Any 10GBase-T Ethernet  
Perfect For data center and SMB applications  
Ideal For Switches, Servers, Patch panels,  
Or Other Equipment.

## MODEL

No	Color
160201	White
160202	Gray

## CONNECTORS

Shielded RJ45 Connector Gold Plated

## SPECIFICATION

### Technical Data

Data Rate Support	10GBase-T
Standard Bandwidth (MHz)	500
Reference Standard	EIA/TIA 568 & ISO/IEC 11801

### Conductor

Material	Bare Copper ( 99.99% )
AWG	26AWG
Conductor Diameter	4 × 2 × 7/0.16 ± 0.01mm

### Insulation

AVG. Thickness	0.21mm
Insulation Diameter	0.98 ± 0.01mm

### Shielding

Braiding	64# AL_MG Braiding
----------	--------------------

### Jacket

AVG. Thickness	0.6 ± 0.01mm
Outer Diameter	6.1 ± 0.1mm
Color	Available
Marking	Available

### Color of Pairs

Pair 1	Blue	White-Blue
Pair 2	Orange	White-Orange
Pair 3	Green	White-Green
Pair 4	Brown	White-Brown

### Stranded BC

Material	Bare Copper ( 99.99% )
AWG	26AWG
Conductor Diameter	4 × 2 × 7/0.16 ± 0.01mm

### HDPE

AVG. Thickness	0.21mm
Insulation Diameter	0.98 ± 0.01mm

### S/FTP (Al Foil To Every Pair)

Braiding	64# AL_MG Braiding
----------	--------------------

### LSZH

AVG. Thickness	0.6 ± 0.01mm
Outer Diameter	6.1 ± 0.1mm
Color	Available
Marking	Available



**Cable ID: CAT6ASFTP26#-01**

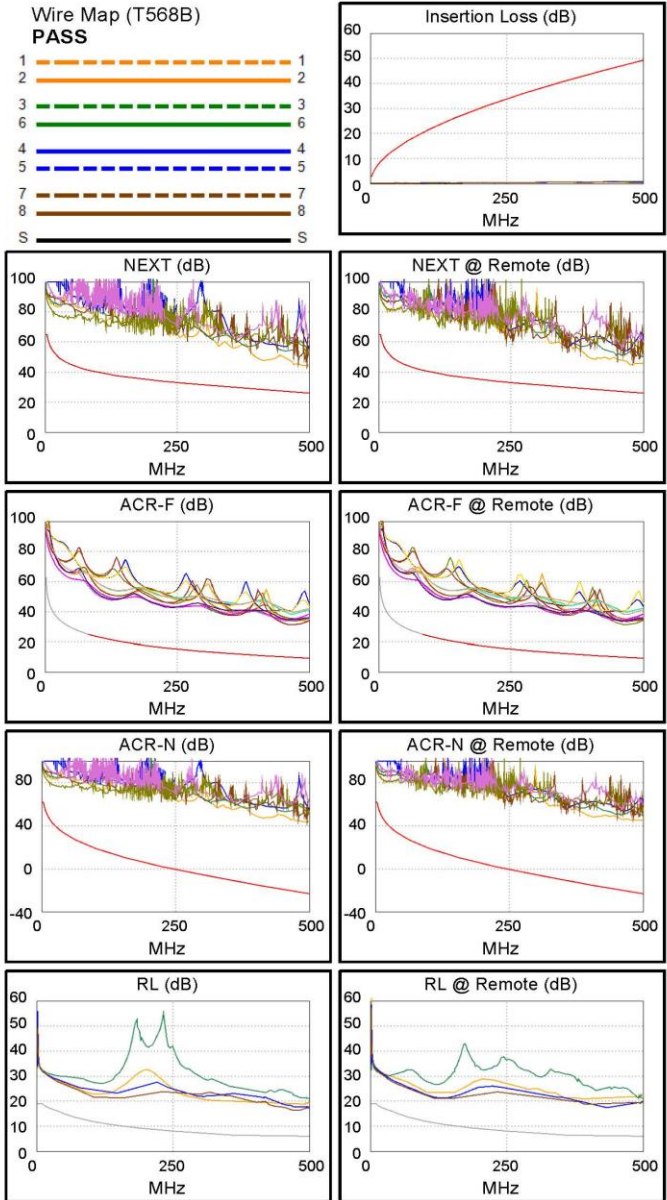
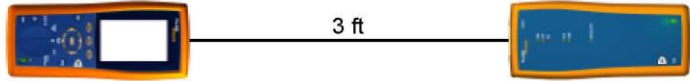
Date / Time: 04/29/2022 07:53:09 PM  
**Headroom 17.8 dB (NEXT 12-36)**  
**Test Limit: TIA Cat 6A Channel**  
 Cable Type: Cat 7 S/FTP  
 NVP: 76.0%

Operator: Your Name  
 Software Version: 2.7800  
 Limits Version: 1.9500  
 Calibration Date:  
 Main (Tester): 09/15/2021  
 Remote (Tester): 09/15/2021

**Test Summary: PASS**

Model: DTX-1800  
 Main S/N: 3192039  
 Remote S/N: 3192040  
 Main Adapter: DTX-CHA002  
 Remote Adapter: DTX-CHA002

Length (ft), Limit 328	[Pair 12]	3
Prop. Delay (ns), Limit 555	[Pair 12]	4
Delay Skew (ns), Limit 50	[Pair 12]	0
Resistance (ohms)	[Pair 78]	0.3
Insertion Loss Margin (dB)	[Pair 36]	46.7
Frequency (MHz)	[Pair 36]	467.0
Limit (dB)	[Pair 36]	47.5



**Worst Case Margin Worst Case Value**

PASS	MAIN	SR	MAIN	SR
Worst Pair	12-36	12-36	12-36	12-36
<b>NEXT (dB)</b>	17.8	18.3	17.9	18.3
Freq. (MHz)	480.0	476.0	488.0	479.0
Limit (dB)	26.6	26.7	26.4	26.6
Worst Pair	36	36	36	36
<b>PS NEXT (dB)</b>	18.4	19.7	18.4	19.7
Freq. (MHz)	495.0	481.0	495.0	481.0
Limit (dB)	23.3	23.7	23.3	23.7

PASS	MAIN	SR	MAIN	SR
Worst Pair	45-36	36-45	45-36	36-45
<b>ACR-F (dB)</b>	21.3	21.5	21.3	21.5
Freq. (MHz)	467.0	467.0	467.0	467.0
Limit (dB)	9.9	9.9	9.9	9.9
Worst Pair	36	45	36	45
<b>PS ACR-F (dB)</b>	21.4	22.2	21.4	22.2
Freq. (MHz)	467.0	467.0	467.0	467.0
Limit (dB)	6.9	6.9	6.9	6.9

N/A	MAIN	SR	MAIN	SR
Worst Pair	36-78	12-36	12-36	12-36
<b>ACR-N (dB)</b>	27.1	28.6	65.9	65.8
Freq. (MHz)	2.9	3.0	488.0	479.0
Limit (dB)	61.4	61.4	-22.3	-21.6
Worst Pair	36	36	36	36
<b>PS ACR-N (dB)</b>	27.1	27.0	66.7	67.3
Freq. (MHz)	2.9	3.3	495.0	481.0
Limit (dB)	58.4	58.2	-25.7	-24.6

N/A	MAIN	SR	MAIN	SR
Worst Pair	78	78	78	45
<b>RL (dB)</b>	9.3	9.8	10.3	11.4
Freq. (MHz)	123.5	115.5	470.0	433.0
Limit (dB)	11.1	11.4	6.0	6.0

Compliant Network Standards:  
 10BASE-T      100BASE-TX      100BASE-T4  
 1000BASE-T    2.5GBASE-T      5GBASE-T  
 10GBASE-T    ATM-25            ATM-51  
 ATM-155      100VG-AnyLan    TR-4  
 TR-16 Active    TR-16 Passive