




PRODUCT TECHNICAL DATASHEET

H30/643

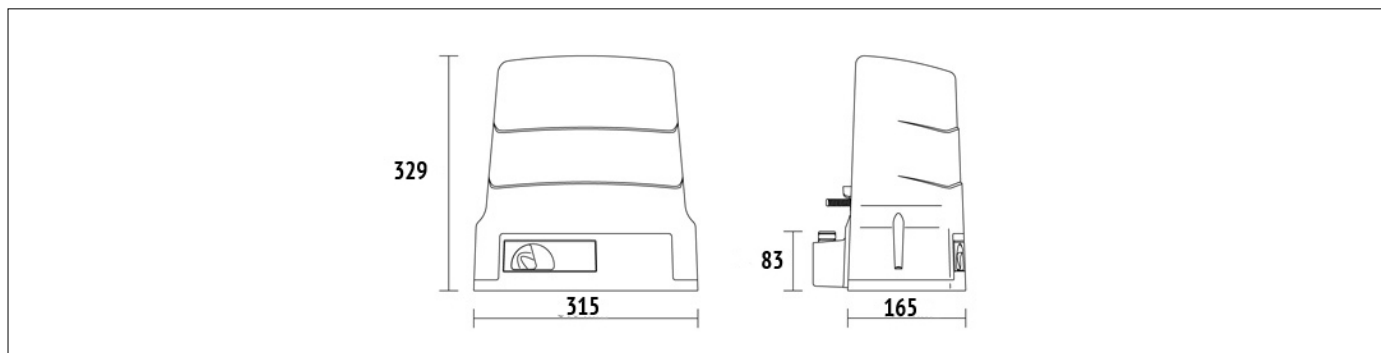
- Optical encoder 
- Mechanic limit switch 
- 230V AC 



CODE	DESCRIPTION	PCS/PALLET
H30/643	Electromechanical motor 230V AC irreversible ideal for sliding gates up to 600 kg with built-in control unit H70, optical encoder and mechanical limit switch.	44

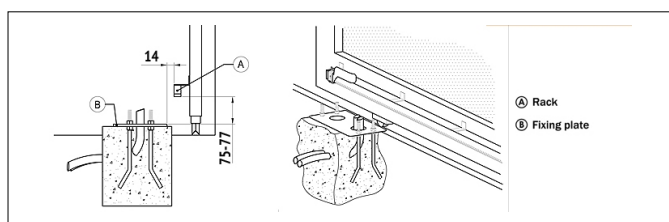
PRODUCT TECHNICAL SPECIFICATIONS	
Max gate weight	600 kg
Power line supply	230V AC - 50Hz
Motor power supply	230V AC
Power rating	240W
Frequency of use	50%
Thrust	300N
Operating temperature	-20+55 C°
Protection level	IP44
Reductor Type	Irreversible
Manoeuvre speed	9.5 m/min (0.16 m/s)
Motor thermal protection	150°C
Incorporated condenser	12,5 µF
Limit switch	Mechanical
Onboard control unit	H70/104AC
Encoder	Optical
Type exit gear	Z15/mod 4
Maximum dimension product in mm (L x W x H)	315 x 165,8 x 329
Product weight packed (Kg)	11,4
Number items per pallet	44

PRODUCT DIMENSIONS AND PREPARING FOR INSTALLATION

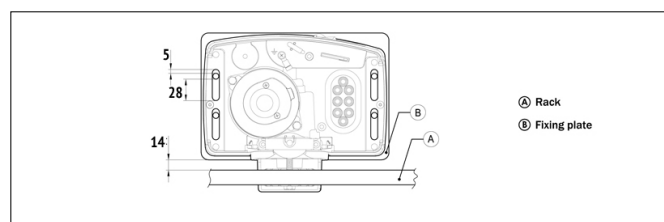


DIMENSIONS

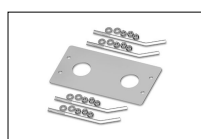
PRODUCT PREPARING FOR INSTALLATION



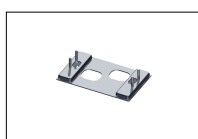
PREDISPOSITION FOR STANDARD INSTALLATION



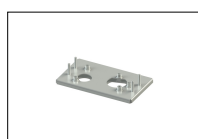
PRODUCT ACCESSORIES



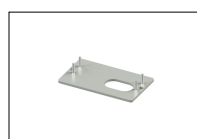
KT214
Fixing plate with stay bolts and screws H30 series.



KT214/SC
Adapter plate with stay bolts and screws H30 series.



KT214/SF
Adapter plate with stay bolts and screws H30 series.



KT214/SN
Adapter plate with stay bolts and screws H30 series.



KT221
Raised fixing plate for H30 series (+3,5 cm).



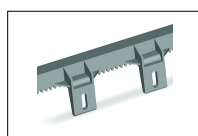
GA550
Galvanised steel rack 22x22x1000 module 4.



GA551
Galvanised steel rack 30x12x1000 module 4 with spacers and screws.



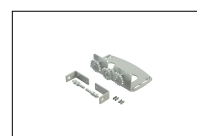
GA554
Pocket of 6 spacers (2,5 cm) and screws.



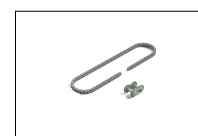
GA553
Nylon rack module 4 with 6 connectors L.1000.



GA557
Roger Technology nylon rack module 4 with 6 connectors L.1000.



LT330
Chain drive kit for H30 - BH30 series.



LT334
1/2" X 5/16" 5 meter chain piece for LT330 with joint.



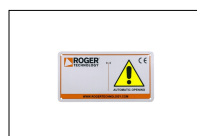
LT335
1/2" X 5/16" joint for LT334 chain section.



MC773
Kit mechanical limit switch for control unit H70/103AC, H70/104AC, B70/1DC, B70/1DCHP.



R99/C/001AL
Signboard "Automatic Opening" Aluminium version.



R99/C/001
Signboard "Automatic Opening".