

PRODUCT TECHNICAL DATASHEET

R20/300

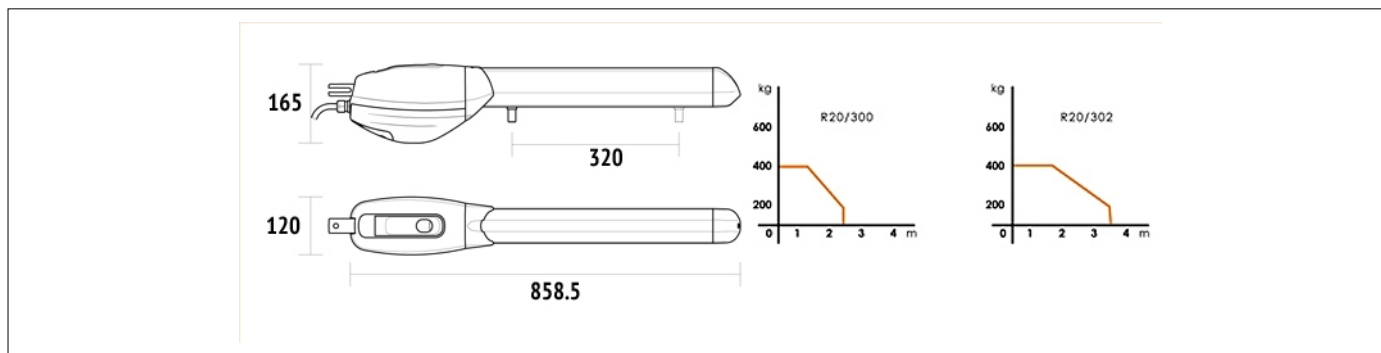


CODE	DESCRIPTION	PCS/PALLET
R20/300	Electromechanical actuator 230V AC irreversible for swing gate with leaf up to 2.5 mt. short, fast, with 1 microswitch, complete with fixing plates.	50

PRODUCT TECHNICAL SPECIFICATIONS

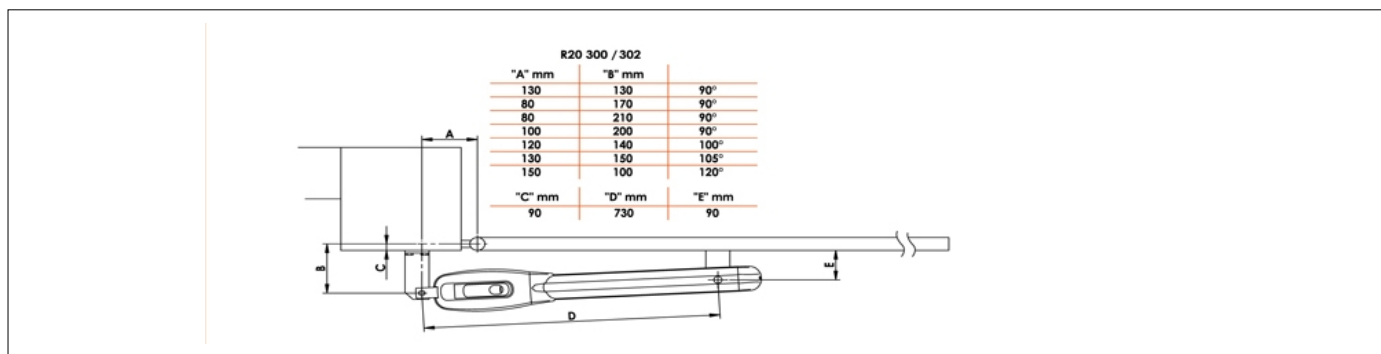
Power line supply	230V AC - 50Hz
Motor power supply	230V AC
Power rating	200W
Frequency of use	40%
Thrust	2500N
Operating temperature	-20+55 C°
Protection level	IP43
Reductor Type	Irreversible
Manoeuvre speed	1,66 cm/s
Opening time at 90°	19 s
Stroke	320 mm
Motor thermal protection	150 C°
Incorporated condenser	15 µF
Limit switch	Microswitch in opening (optional in closing)
Encoder	-
Maximum dimension product in mm (L x W x H)	858,5 x 120 x 165
Product weight packed (Kg)	9,2
Number items per pallet	50

PRODUCT DIMENSIONS AND PREPARING FOR INSTALLATION



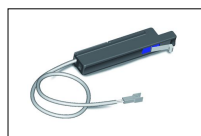
DIMENSIONS

PRODUCT PREPARING FOR INSTALLATION



PREDISPOSITION FOR STANDARD INSTALLATION

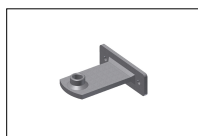
PRODUCT ACCESSORIES



MC770
Kit optional microswitch in dosing with cable series R20.



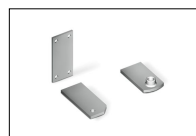
MC780
Kit 2 mechanical stop R20 series.



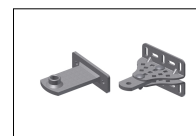
KT202/R
Screw-welded short front bracket.



KT204/R
Screw-adjustable short rear bracket.



KT206
Kit 3 hinge plates short, to weld.



KT206/R
Kit of screw-adjustable short rear bracket and screw-welded short front bracket.



R99/C/001
Signboard "Automatic Opening".