

PRODUCT TECHNICAL DATASHEET

R20/500

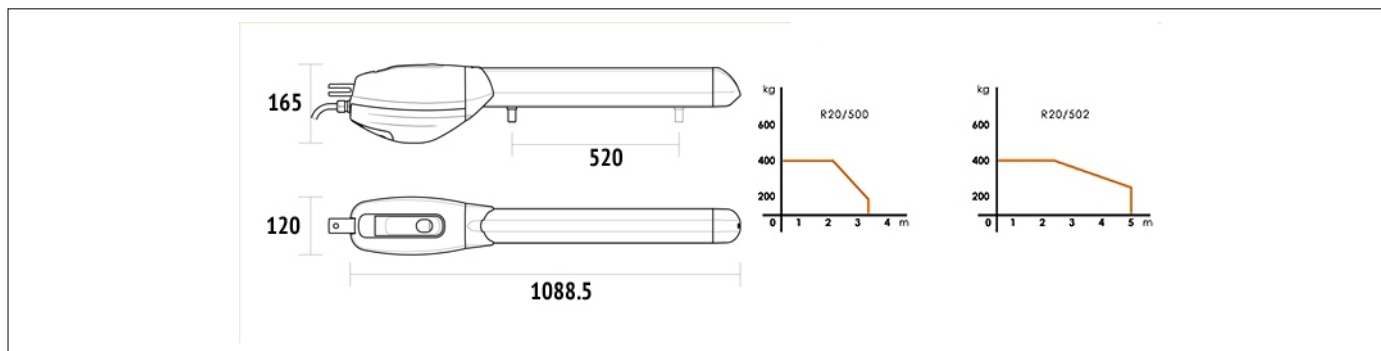


CODE	DESCRIPTION	PCS/PALLET
R20/500	Electromechanical actuator 230V AC irreversible ideal for swing gates with leaf up to 3,5 mt. long, fast, with 1 microswitch, complete with fixing plates.	36

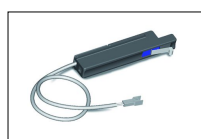
PRODUCT TECHNICAL SPECIFICATIONS

Power line supply	230V AC - 50Hz
Motor power supply	230V AC
Power rating	200W
Frequency of use	40%
Thrust	2500N
Operating temperature	-20+55°C
Protection level	IP43
Reductor Type	Irreversible
Manoeuvre speed	1,66 cm/s
Opening time at 90°	27 s
Stroke	520 mm
Motor thermal protection	140°C
Incorporated condenser	15 µF
Limit switch	Microswitch in opening (optional in closing)
Encoder	-
Maximum dimension product in mm (L x W x H)	1088,5 x 120 x 165
Product weight packed (Kg)	10,7
Number items per pallet	36

PRODUCT DIMENSIONS AND PREPARING FOR INSTALLATION



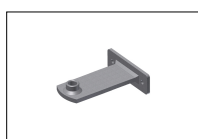
PRODUCT ACCESSORIES



MC70
Kit optional microswitch in closing with cable series R20.



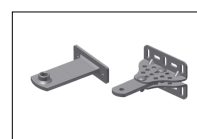
MC780
Kit 2 mechanical stop R20 series.



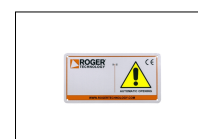
KT201/R
Screw-welded Long front bracket.



KT205
Kit 3 hinge plates long series, to weld.



KT205/R
Kit of screw-adjustable long rear bracket and screw-welded long front bracket.



R99/C/001
Signboard "Automatic Opening".