

# Milesight

## AI Motorized Mini Bullet Network Camera

**NDAA** 

**IP67 + IK10**

**Motorized Lens**



**DATASHEET**



### KEY FEATURES

- ▶ NDAA Compliance (Milesight Fully NDAA-compliant products are well suited for government, defense and a range of projects subject to the NDAA.)
- ▶ Smart IR II (Combining the High Beam and Low Beam to adjust IR intensity to fit different lighting conditions.)
- ▶ 120dB Super WDR (Excellent performance even when the ratio of the luminosity of brightest and darkest is up to 120dB.)
- ▶ Advanced Functions (Boasting to support various advanced functions such as HLC, ROI.)
- ▶ 256G (Supporting ultra-large external microSD/SDHC/SDXC card storage up to 256G.)
- ▶ Adjustable 3-Axis Bracket (Providing a robust mounting platform for angle adjustments on a 3-axis plane.)
- ▶ Smart Stream (Bandwidth, storage and bit rate are saved with Smart Stream On, eg, H.265+ saves 70%~80% bandwidth that of H.264.)

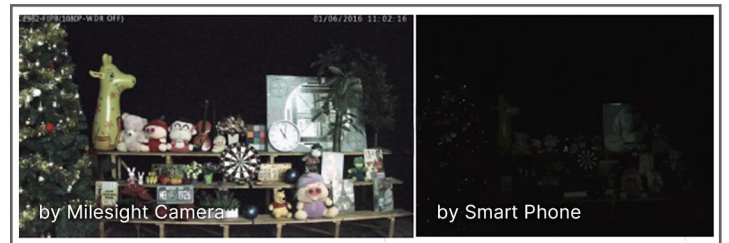
### AI Video Analytics

- 8 intelligent VCA modes powered by AI engine, which can intelligently filter objects to focus on human and vehicle detection.
- People Counting technology provides high accuracy and real-time data based on AI algorithm with statistic reports.



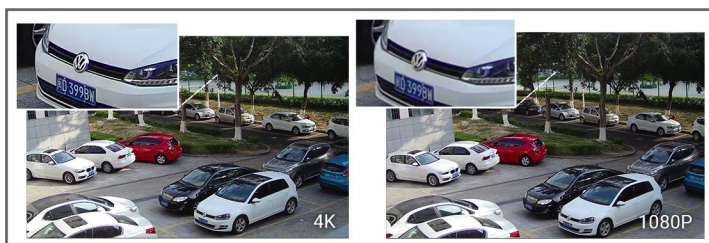
### 0.002Lux Ultra Low-light

The starlight camera is able to deliver high detailed color images even in low light environment reaching 0.002Lux(Color) or 0Lux(B/W), and near infrared light environments without any supplementary lighting.



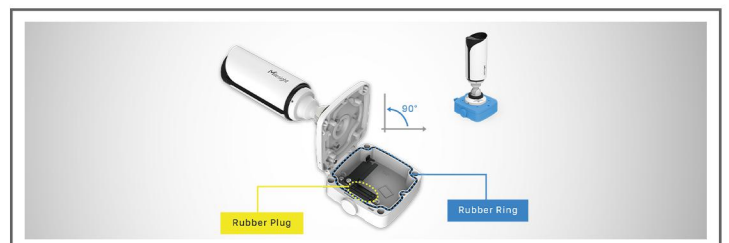
### 30fps@4K

Providing 4K HD resolution with frame rate of 30fps, the camera performs well in catching detailed image regardless of the moving speed.



### Integrated Junction Box

The well-designed integrated Junction Box especially the Clamshell structure ensures efficient and simple installation. It enlarges the space to make cable connection neat and as easy as a piece of cake.



# AI Motorized Mini Bullet Network Camera



	Model	MS-C2964-RFPA (2MP)	MS-C5364-FPA (5MP)	MS-C8164-FPA (4K)
<b>Camera</b>	Image Sensor	1/2.8" Progressive Scan CMOS		
	Min. Illumination	Color: 0.002Lux@F1.2 Color: 0.005Lux@F1.4 B/W: 0Lux with IR on	Color: 0.005Lux@F1.2 Color: 0.008Lux@F1.4 B/W: 0Lux with IR on	Color: 0.01Lux@F1.2 Color: 0.012Lux@F1.4 B/W: 0Lux with IR on
	WDR	120dB Super WDR		
	Shutter Time	1/100000s~1s		
	IR Distance	Up to 50m		
	Day/Night Mode	Day/Night/Auto/Customize/Schedule		
	S/N	>55dB		
	<b>Lens</b>	Lens	Motorized 2.7~13.5mm/3.0~10.5mm/7~22mm@F1.4 P-Iris(Optional)	
Field of View		H111°~H34°/D130°~D39°/V60°~V19° (2.7~13.5mm) H100°~H33°/D115°~D38°/V54°~V18° (3.0~10.5mm) H42°~H17°/D48°~D19°/V24°~V9° (7~22mm)	H99°~H31°/D124°~D38°/V72°~V23° (2.7~13.5mm) H89°~H31°/D111°~D38°/V66°~V23° (3.0~10.5mm) H37°~H15°/D46°~D19°/V28°~V11° (7~22mm)	H107°~H33°/D125°~D37° /V58°~V18°
Mount		Φ14		
Focus Control		Auto/Manual		
Iris Control		N/A		
<b>Video</b>		Max. Image Resolution	1920x1080	2592x1944
	Primary Stream	60Hz: 60fps@(1920x1080, 1280x960, 1280x720, 704x576) 50Hz: 50fps@(1920x1080, 1280x960, 1280x720, 704x576)	60Hz: 30fps@(2592x1944, 2592x1520, 2048x1536, 1920x1080, 1280x960, 1280x720, 704x576) 50Hz: 25fps@(2592x1944, 2592x1520, 2048x1536, 1920x1080, 1280x960, 1280x720, 704x576)	60Hz: 30fps@(3840x2160, 3072x2048, 2592x1944, 2592x1520, 2048x1536, 1920x1080, 1280x960, 1280x720, 704x576) 50Hz: 25fps@(3840x2160, 3072x2048, 2592x1944, 2592x1520, 2048x1536, 1920x1080, 1280x960, 1280x720, 704x576)
	Secondary Stream	60Hz: 60fps@(704x576, 640x480, 640x360, 352x288, 320x240, 320x192) 50Hz: 50fps@(704x576, 640x480, 640x360, 352x288, 320x240, 320x192)	60Hz: 30fps@(704x576, 640x480, 640x360, 352x288, 320x240, 320x192) 50Hz: 25fps@(704x576, 640x480, 640x360, 352x288, 320x240, 320x192)	
	Tertiary Stream	60Hz: 30fps@(1280x720, 704x576, 640x480, 640x360, 352x288, 320x240, 320x192) 50Hz: 25fps@(1280x720, 704x576, 640x480, 640x360, 352x288, 320x240, 320x192)		
	Video Compression	H.265+/H.265(HEVC)/H.264+/H.264/MJPEG		
	Video Bit Rate	16Kbps~16Mbps(CBR/VBR Adjustable)		

# AI Motorized Mini Bullet Network Camera

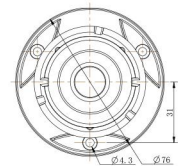
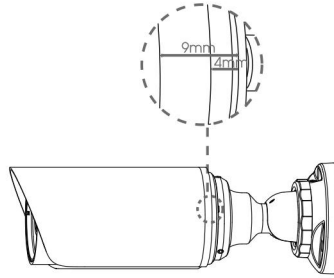
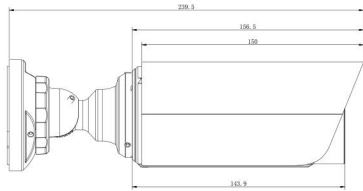
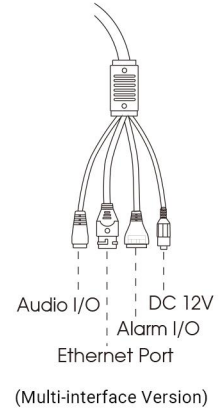
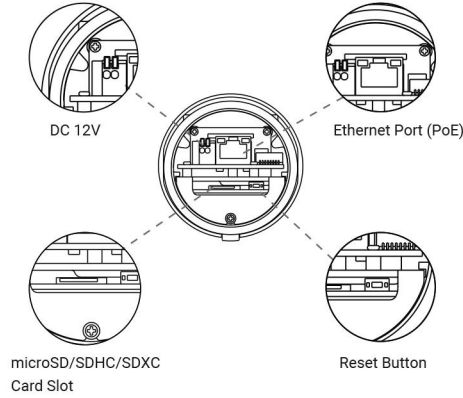
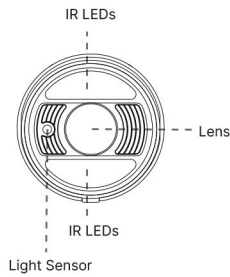


<b>Video</b>	Privacy Masking	Up to 24 areas						
	ROI	Up to 8 areas						
	Image Setting	Brightness/Contrast/Saturation/Sharpness						
<b>Interface</b>	Ethernet	1*RJ45 10M/100M Ethernet Port						
	Audio I/O	1/1 (Multi-interface Version)						
	Alarm I/O	1/1 (Multi-interface Version)						
<b>Network</b>	Network Storage	NAS(Support NFS, SMB/CIFS), ANR						
	Protocol	IPv4/IPv6, ARP, TCP, UDP, RTCP, RTP, RTSP, RTMP, HTTP, HTTPS, DNS, DDNS, DHCP, FTP, NTP, SMTP, SNMP, UPnP, Bonjour, SIP, PPPoE, VLAN, 802.1x, QoS, IGMP, ICMP, SSL						
<b>Audio</b>	Audio Compression	G.711/AAC/G.722/G.726						
	Audio Sampling Rate	8/16/32/44.1/48KHz						
	Audio Bit Rate	16~256kbps						
	Two-way Audio	Support						
<b>Intelligent Analytics</b>	Video Analysis	Region Entrance, Region Exiting, Advanced Motion Detection, Tamper Detection, Line Crossing, Loitering, Object Left, Object Removed						
	People Counting&Report	Count the number of people entering or exiting, up to 4 detection areas for regional people counting						
<b>System</b>	Storage	Support microSD/SDHC/SDXC Card Local Storage, up to 256G						
	Advanced Function	BLC, HLC, 2D DNR, 3D DNR, AWB, IP Address Filtering, AGC, Anti-flicker, Corridor Mode, Deblur, Watermark						
	SIP/VoIP Support	Yes, Voice & Video-over-IP						
	Event Trigger	Motion Detection, Network Disconnection, etc.						
	Event Action	FTP Upload, SMTP Upload, SD Card Record, SIP Phone, HTTP Notification, etc.						
	System Compatibility	ONVIF Profile G & Q & S & T, API						
<b>General</b>	Working Temperature	-40°C~60°C						
	Working Humidity	0~90%(Non-condensing)						
	Power Supply	PoE (802.3af) / DC 12V±10%						
	Power Consumption	<table border="0" style="width: 100%; text-align: center;"> <tr> <td style="width: 33%;">8W MAX</td> <td style="width: 33%;">8.5W MAX</td> <td style="width: 33%;">9W MAX</td> </tr> <tr> <td>10W MAX (With IR on)</td> <td>11W MAX (With IR on)</td> <td>11W MAX (With IR on)</td> </tr> </table>	8W MAX	8.5W MAX	9W MAX	10W MAX (With IR on)	11W MAX (With IR on)	11W MAX (With IR on)
	8W MAX	8.5W MAX	9W MAX					
	10W MAX (With IR on)	11W MAX (With IR on)	11W MAX (With IR on)					
	Housing	Vandal-proof IK10-rated Metal Housing / Up to IP67-rated for Weather-resistant Performance						
	Weight	825g						
Dimensions	Φ76mmX239.5mm							
Warranty	3/5 Years							

# AI Motorized Mini Bullet Network Camera



## Structure Diagrams



Units: mm

## Accessories Support

A01 Pole Mount

Weight: 720g  
Dimensions: 170\*51.5\*152.6mm



A03 External Corner Bracket

Weight: 900g  
Dimensions: 170\*152.5\*76.3mm



A63 Junction Box

Weight: 620g  
Dimensions: 134\*126\*40mm



**Milesight Technology** | [www.milesight.com](http://www.milesight.com)  
Contact Us: [sales@milesight.com](mailto:sales@milesight.com) [support@milesight.com](mailto:support@milesight.com)

Add: 220 NE 51st Street, Oakland Park, Florida 33334, USA  
Tel: +1-800-561-0485

Add: 925, Anyang SK V1 Center, LS-ro 116beon-gil, Dongan-gu, Anvng-si, Korea  
Tel: +82-31-990-7732

Add: Building C09, Software Park Phase III, Xiamen 361024, Fujian, China  
Tel: +86-592-5922772

