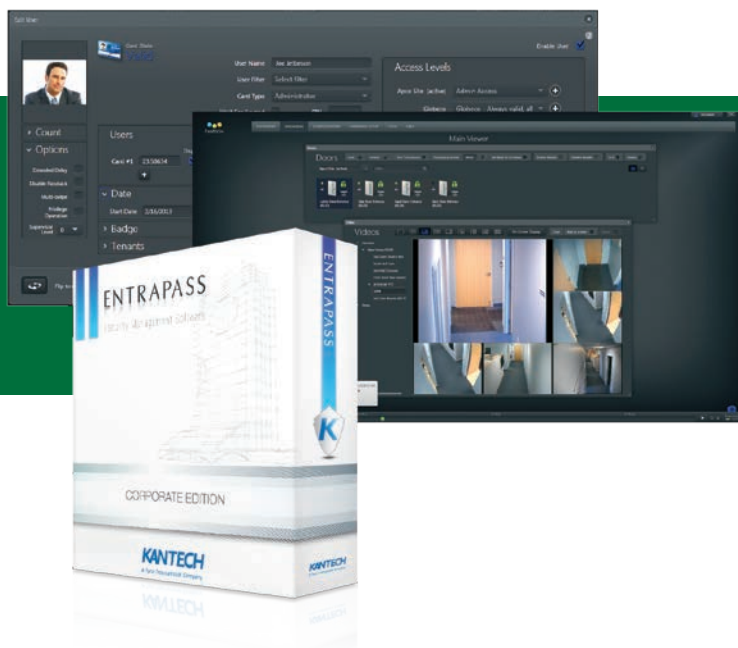


EntraPass Corporate Edition Multiple Workstation Security Management Software



Features That Make a Difference¹:

- Supports up to 20 workstations and controls hundreds of thousands of doors
- Integrates with EntraPass Go mobile app – interact with EntraPass with a few taps on your mobile device
- Integrates with EntraPass Web (remote user platform) to manage access control, IP video, telephone entry and/ or intrusion security assets
- Supports up to 50* concurrent logins of EntraPass Web and/or EntraPass Go
First login is provided as standard
- Integrates with Exacq video management systems, American Dynamics DVRs/NVRs (VideoEdge, HDVR, ADTVR and Intellex) and Kantech INTEVO integrated security platform
- Integrates with DSC PowerSeries, PowerSeries NEO and MAXSYS intrusion alarm panels
- Double and triple swipe card at reader (with KT-1/KT-400 controller) to activate such features as: activate relay, arm alarm system and lock/unlock doors
- Assign 5 access levels per site to a user utilizing KT-1/KT-400 controller

Network-Ready

EntraPass Corporate Edition is a proven platform that offers the ultimate balance between power and affordability in a network environment. EntraPass offers the flexibility to securely connect controllers directly on the network, as well over RS-485. EntraPass software is compatible with Kantech IP devices such as KT-400/ KT-1 controllers and Kantech IP Link (KT-IP) which all utilize highly secure 128-bit AES encryption to ensure communication is not compromised. KT-IP is an RS-232 to TCP/ IP interface that connects KT-100 or KT-300 door controllers to a network and the KT-400 controller is a high proven IP controller that supports up to 8 ioProx readers (4 doors IN/OUT control using ioProx XSF readers). For the utmost flexibility and as a truly plug & play IP device, the new KT-1 controller from Kantech features a direct Ethernet port, PoE/PoE+ capabilities and can be easily surface mounted above the door, thus reducing cabling and installation time. With its innovative one-touch set-up and enrollment process, KT-1 provides integrators with the ultimate IP access control installation in minutes. Kantech's IP devices offer real-time access to security information and integrate seamlessly into an existing TCP/IP network; meaning no changes to existing equipment, network, or related systems. They also act as a

polling device to ensure the controllers communicate with EntraPass only as required, reducing network traffic.

Remote, mobile access

EntraPass Corporate Edition supports the intuitive, state-of-the-art EntraPass Web and EntraPass Go mobile applications which offer customers an unparalleled feature rich security experience. System administrators can securely connect via the web or a dedicated app on their smart phone/ tablet and manage common access control, video and intrusion functions wherever they are.

Site Architecture

A site within EntraPass represents a customer's building, campus etc and is composed of many different connections, which have multiple door controllers attached. The system can manage up to 2048 local/secure IP connections (consisting of KT-100, KT-200, KT-300, KT-1 or KT-400 door controllers) per Multi-Site Gateway. EntraPass supports the use of third party card readers as well as Kantech's renowned ioProx readers. ioProx readers feature a highly secure 39 bit XSF format and can be connected using existing CAT5e cabling for installation cost savings.

EntraPass software is highly scalable and can seamlessly expand as the security requirements of your business grow.



¹ All of the features listed on this data sheet are available with the latest build of EntraPass v6.03 and higher

Features

Redundancy Server

Redundancy server protects the EntraPass database against unexpected failures and is an option available with Corporate and Global Edition software. It features real-time data transfer, creating fully functional redundancy at low cost. In the event of primary server failure, the mirror database automatically launches the redundancy server which supports all the features and functionality of the primary server. Best of all, the redundancy server is easy-to-implement and configure. Multiple redundant servers with mirror database can be used to provide local redundancy in an enterprise environment.

Door Controller Compatibility

EntraPass software is compatible with Kantech's complete line of door controllers to create a highly scalable solution that can be deployed within one building or across multiple locations. Depending on software/controller selected, the system easily scales from controlling a few doors to a million doors and managing millions of cards at multiple locations.

Remote System Management Tools

The EntraPass Web platform enhances the user experience by delivering remote and convenient real-time access to manage common security tasks and reports from any computer connected to the internet. Security managers on the go can perform a host of functions via EntraPass Web, including locking/unlocking doors, managing cards and schedules, requesting reports, viewing live and recorded video, monitoring events by floor plan and so much more. Simply download the EntraPass Web application from any Windows PC web browser and stay connected even when on the go!

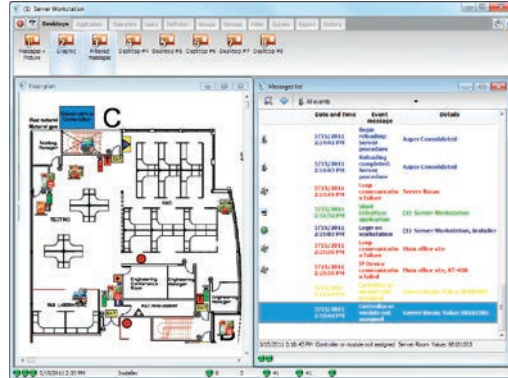
EntraPass Go is a mobile app that allows you to remotely control your security system from anywhere without being tied to a workstation. EntraPass Go puts you in control of your security. It enables you to interact with EntraPass security management software using only a few taps on your mobile device. The easy-to-use mobile app offers anytime, anywhere real-time management of over 20 security tasks. You can manage/create cards, lock/unlock doors, arm/disarm partitions, view live video from Exacq exacqVision video servers and Kantech INTEVO integrated security platform, requests reports and more. EntraPass Go is available for download on the App Store and Google Play.

SmartLink for Advanced System Integration and Automation

The SmartLink application enables operators to integrate EntraPass with most intelligent devices such as video multiplexers, HVAC systems, LCD panels, video matrix switchers, etc. SmartLink uses an RS-232, API or network connection between EntraPass and the external device. With the SmartLink Task Builder, EntraPass reaches new levels in task automation. A series of tasks, similar to macros, can be created and triggered on any event and component in the system. When an event occurs, the tasks are then executed by the system.

WebViews Provide An Enhanced Operator Experience

WebViews enhance the EntraPass user experience. They allow you to embed a web page or file and integrate this graphic into the desktop. You can import a building floor plan and add objects, such as doors and relays, directly onto the floor plan for a visual representation of applications in various locations across the world.



Kantech Advantage Program

As EntraPass security management software continues to deliver new features and enhancements, it is important to have the productivity tools and training support to effectively use this solution. The Kantech Advantage Program (KAP) allows you to stay current with your EntraPass software installation using tokens. The number of tokens required is based on the EntraPass options activated.

Video Integration

Real-time monitoring capability is a response to the growing importance of video in access control systems. Integration with Exacq video management systems, American Dynamics DVRs/NVRs (VideoEdge, HDVR, ADTVR, Intellex) and INTEVO integrated security platform provides real-time video monitoring as well as video playback. Video can be linked to access events (such as "door forced open") and recorded from one to sixteen cameras from compatible DVR/NVR simultaneously. All cameras can be called up directly from a floor plan simply by double-clicking on the camera or dome icon.

EntraPass Video Vault

Video Vault offers an alternative to manually saving each video clip one-by-one. Simply pre-define groups for the video clips such as door forced open or access denied. Video Vault then saves the clips to the appropriate group based on whatever schedules are chosen. Video clips can also be organized as .bmp images in lieu of icons. It can connect up to 128 Exacq and/or American Dynamics DVRs/NVRs (VideoEdge, HDVR, ADTvr, Intellex and INTEVO) via integration with EntraPass software and can archive the imported video to as many as 24 digital storage devices.

Take a closer look

Alarm Panel Integration

By integrating all security assets such as intrusion detection, access control, video and telephone entry into one common platform, users can interface with just one system, for greater simplicity and optimum control. Kantech offers integration kits to connect a DSC intrusion alarm panel to a Kantech



access control system to create a single unified solution. Data integration with DSC PowerSeries, PowerSeries NEO* or MAXSYS intrusion alarm panels allows the access control system to receive intrusion events, view

zone status and to manage partitions/user codes. *Please note: NEO Virtual Keypad offering is not available at this time.

The virtual zones feature in DSC PowerSeries NEO allows for the access control events from EntraPass to be sent to the central monitoring center for even better situational awareness.

Telephone Entry Integration

Apartment, condominium and office buildings are just a few of the applications where security and communications are required for controlling resident and visitor traffic. The Kantech Telephone Entry System (KTES) delivers a fully integrated telephone entry and access control solution. The KTES provides visitor/resident entry, tracking and reporting. It uses a touch-tone phone style keypad that offers both familiarity and ease of use. Two-way audio is built-in. Video verification can be integrated to enhance the solution.

Basic System Diagram



Minimum System Requirements

Processor (without video integration) . . .	Intel® Core™ 2Duo 2.6 GHz or more
Processor (with video integration) . . .	Quad Core
RAM	2GB or more (4GB with video integration)
Free Hard Disk Space for Software . . .	50GB
Color Depth.	24-bit (16 million colors), required for video integration
Screen Resolution	1024 x 768
Graphic Adapter Card	PCI Express graphics card with 512MB (1GB with video integration) memory and DirectX 9.0 support
Network Interface Card	10/100 Base-T network adaptor (Gigabit or Greater with Video Integration)

Operating System Compatibility

Windows 7 Pro/Enterprise/Ultimate, Window 8 and 8.1 Enterprise, Windows Server 2008 R2 Standard/Enterprise, Windows Server 2012 R2 Data Center. All operating systems are supported in 32 and 64-bit version. All operating systems should have their latest Service Packs and updates.

For integrations, validate specifications of products used.

Virtual Environment Supported VMware Workstation v7 & higher

System Capacities

Cards	Unlimited
Card Families or Site Codes	Unlimited
Card Readers/Keypad per Multi-Site Gateway KT-400, KT-1, KT-300	Up to 10,000
Monitored Points (Inputs) per Multi-Site Gateway KT-400, KT-1, KT-300	Up to 100,000
Auxiliary Outputs for Reader LEDs and Door Alarms per Multi-Site Gateway KT-400, KT-1, KT-300	Up to 100,000
Elevator Floors per Cab.	64
Card User Access Levels	250 per site
Access levels per cardholder.	KT-300(1) KT-400/KT-1 (5) per site
Access Level Combinations.	Unlimited
Schedules	100/site
Time Intervals per Schedule	KT-300 (4), KT-400/KT-1 (20)
Holidays	366 per system
Operator Workstations	20 + 1 on the server
Concurrent EntraPass Web Logins . . .	50
Multi-Site Gateways.	41
System Operator Passwords.	Unlimited
Operator Security Levels	Unlimited, pre-defined (3)
Concurrent System Languages	Two
Number of Printers	One log printer, one report printer, and one badge printer per workstation
Connections per Multi-Site Gateway . .	Up to 2048 (IP, USB, Dial up)

Integration Capabilities

Intrusion	DSC PowerSeries (PC1616, PC1832, PC1864, PC4020), PowerSeries NEO (HS2016, HS2032, HS2064, HS2128) and MAXSYS (PC4020) Alarm Panels
---------------------	--

Video

Exacq video management systems (v7.2) and American Dynamics DVRs/ NVRs (VideoEdge up to v4.6), HDVR (v1.6), ADTVR (v2.20.05), Intellex (up to v5.0) and the INTEVO platform. Intellex Ultra, DVMS and IP all require EntraPass software v3.1 or higher, Intellex LT requires software v2.6 or higher. Panasonic video recorders (requiring option E-COR-DVR-1): WJ-HD309A/316A/616/716, WJ-ND200/300/400.

Model Numbers

Each EntraPass Corporate Edition software package includes: two additional Workstation licenses, one Server/Workstation license, one Multi-Site Gateway license and one WebStation license.

Software

E-COR-EN-V6.	EntraPass Corporate Edition software and English user manual
E-COR-FR-V6.	EntraPass Corporate Edition software and French user manual
E-COR-V6-LIC	EntraPass Corporate Edition software license
E-COR-V6	EntraPass Corporate Edition software
E-COR-UPG-V6-EN	EntraPass Corporate Edition software upgrade from v3.xx to v6.xx and English user manual
E-COR-UPG-V6-FR.	EntraPass Corporate Edition software upgrade from v3.xx to v6.xx and French user manual
E-COR-UPG-V6-LIC	EntraPass Corporate Edition software upgrade license

Additional Workstation and Gateway Licenses

E-COR-WS1	License for 1 Workstation (v3.xx and higher)
E-COR-WS6	License for 6 Workstations (v3.xx and higher)
E-COR-COM.	License for 40 Multi-Site Gateways (v3.xx and higher)

Options

E-COR-RDN	License for 1 Redundancy Server (v3.xx and higher)
E-COR-SQL	License for 1 Card Gateway - MS SQL Database Interface (v3.xx and higher)
E-COR-VVM	License for 1 EntraPass Video Vault (v3.xx and higher)
E-COR-WEB-1	License for 1 concurrent WebStation login (v4.xx and higher)
E-COR-WEB-3	License for 3 concurrent WebStation logins (v4.xx and higher)
E-COR-WEB-10	License for 10 concurrent WebStation logins (v6.01 and higher)
E-COR-WEB-25	License for 25 concurrent WebStation logins (v6.01 and higher)
E-COR-DVR-1.	License for single 3rd party DVR (v5.02 and higher)

Kantech Advantage Program (KAP) Tokens

E-COR-KTK-1	1 Kantech Token
E-COR-KTK-2	2 Kantech Tokens
E-COR-KTK-3	3 Kantech Tokens
E-COR-KTK-5	5 Kantech Tokens
E-COR-KTK-10.	10 Kantech Tokens

User Manuals

E-COR-MAN-EN	EntraPass Corporate Edition English user manual
------------------------	--

Related Products



DSC PowerSeries and MAXSYS
Alarm Panels



exacqVision



EntraPass Go
Mobile App

Approvals



www.kantech.com