

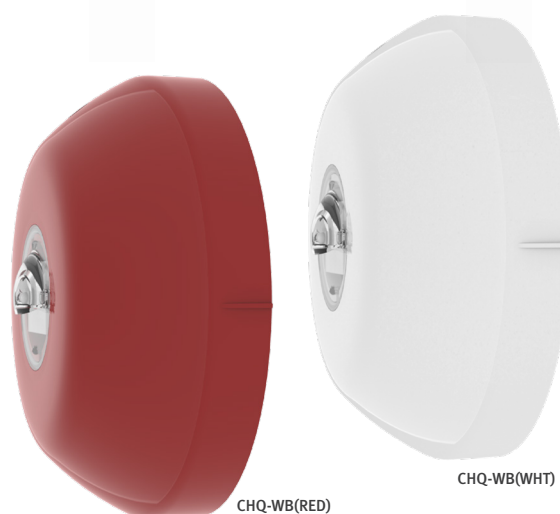
ESP intelligent VADS

CHQ-WB

ADDRESSABLE LOOP-POWERED WALL BEACON

Features

- ▶ Loop powered
- ▶ Single loop address via TCH-B200
- ▶ High Intensity LED technology
- ▶ 0.5/1 Hz flash frequency
- ▶ Choice of 2 LED colours (red or white)
- ▶ Approved to EN54-23:2010 – Category ‘W’
- ▶ High efficiency
- ▶ Selectable light output*1
- ▶ Operating voltage 17-41 V dc
- ▶ PSU Powered option*1.



Description

An addressable loop-powered wall beacon, with a high intensity LED and a custom designed free-form optic which produces a highly visible flash. Coverage includes 5, 5.5 and 7 sqm*2. The unit is designed to fit the YBN-R/3, YBN-R/3(SCI) or the YBO-BS base sounder and is available with an ivory, white or red casing with red or white LEDs.

Specification

Operating Voltage	17 ~ 41 V dc
Quiescent Current (typ)	250 µA
Current when Beacon active	See page 3
Operating Temperature Range	-10 °C to +50 °C
Storage Temperature Range	-30 °C to +70 °C
Maximum Humidity	95% RH - Non Condensing (at 40 °C)
Colour/Case Material	Red, White or Ivory / PC+ABS
Lens Material	PC
Ingress Protection Rating	IP21 (IP33 when used inconjunction with CHQ-WPK Weatherproofing Kit)
Weight (g)/Dimensions (mm)	120 / D100 x H41
Base Fixing Centres (mm)	48 ~ 74

Standards & Approvals

- BS EN 54-7 Smoke Detectors
- BS EN54-25: Components using radio links

- *1 Panel compatibility dependant
- *2 0.5Hz flash frequency white LED

How to choose your Hochiki VAD

Our VAD ratings comprise three parts, X-Y-Z

- ▶ Where X denotes the category, either “O” for Open, “W” for Wall or “C” for ceiling
- ▶ Where Y denotes the maximum mounting height (m)
- ▶ Where Z is the width and length (m) of the coverage floor area.

For example C-3-5 means the VAD is in the Ceiling category, can be mounted at a maximum ceiling height of 3 metres and produce a 5 metre diameter coverage.

What type of VAD?	Which case colour?	Which LED colour	Product	EN54-23 Raings ^{*3}			
Base Sounder Beacon	Ivory case	White LEDs	YBO-BSB2/WL	'O' Rated			
		Red LEDs	YBO-BSB2/RL				
	White case	White LEDs	YBO-BSB2(WHT)/WL				
		Red LEDs	YBO-BSB2(WHT)/RL				
Wall Sounder Beacon	Red case	White LEDs	CHQ-WSB2/WL				
		Red LEDs	CHQ-WSB2/RL				
	White case	White LEDs	CHQ-WSB2(WHT)/WL				
		Red LEDs	CHQ-WSB2(WHT)/RL				
				0	1	2	
Ceiling Beacon	Ivory case	Red LEDs	CHQ-CB/RL	C-3-1.5	C-3-8.6	C-3-10	
		White LEDs	CHQ-CB/WL	C-3-6.5	C-3-7.9	C-3-10	
			CHQ-CB/WL-15	'0'	C-3-11.4	C-3-15.1	
	White case	Red LEDs	CHQ-CB(WHT)/RL	C-3-1.5	C-3-8.6	C-3-10	
		White LEDs	CHQ-CB(WHT)/WL	C-3-6.5	C-3-7.9	C-3-10	
			CHQ-CB(WHT)/WL-15	'0'	C-3-11.4	C-3-15.1	
	Red case	Red LEDs	CHQ-CB(RED)/RL	C-3-1.5	C-3-8.6	C-3-10	
		White LEDs	CHQ-CB(RED)/WL	C-3-6.5	C-3-7.9	C-3-15.1	
			CHQ-CB(RED)/WL-15	'0'	C-3-11.4	C-3-15.1	
	Wall Beacon	Ivory case	Red LEDs	CHQ-CB/RL	'0'	W-2.4-5	W-2.4-5.5
			White LEDs	CHQ-CB/WL	W-2.4-5	W-2.4-5	W-2.4-5.5
		White case	Red LEDs	CHQ-CB(WHT)/RL	'0'	W-2.4-5	W-2.4-5.5
White LEDs			CHQ-CB(WHT)/WL	W-2.4-5	W-2.4-5.5	W-2.4-7	
Red case		Red LEDs	CHQ-CB(RED)/RL	'0'	W-2.4-5	W-2.4-5.5	
		White LEDs	CHQ-CB(RED)/WL	W-2.4-5	W-2.4-5.5	W-2.4-7	

For CHQ-CB / WL & RL Default settings is C-3-7.5, for CHQ-CB / WL-15 Default setting is C-3-15

^{*3} All ratings are all based on 0.5Hz frequency.

^{*4} Full 'O' rating data available in our Application Notes (see below).

Current when Beacon Active

CHQ-CB / WB&RL & CHQ-WB / WL & RL	mA	6	12	17
CHQ-CB / WL-15	mA	6	17	38
CHQ-WSB2 / WL&RL	mA (Beacon Only)	7 (one setting only)		
YBO-BSB2 / WL&RL	mA (Beacon Only)	7 (one setting only)		

Note: Our VAD product codes feature “WL” which means white LEDs and “RL” which means red LEDs.

For details of 'O' Rating data for	Ceiling Beacon and Wall Beacon	See	Application Note AP131
	Wall Sounder Beacon		Application Note AP132
	Base Sounder Beacon		Application Note AP133

All application notes are available to download from our website.



For further information visit www.hochikieurope.com/vads

Hochiki Europe (UK) Ltd. reserves the right to alter the specification of its products from time to time without notice. Although every effort has been made to ensure the accuracy of the information contained in this document it is not warranted or represented by Hochiki Europe (UK) Ltd. to be a complete and up-to-date description.