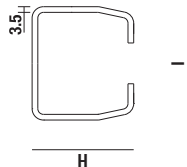


SERIA 900 Poarta: G= 280 Kg / L max = 5 m



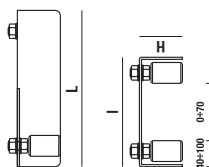
+ SINA ZINCATA
RANFORSATA

COD	P53MZ
Lungime / L	6 (m)
Inaltime / H	60
Latime / I	70



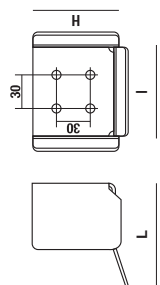
+ GHIDAJ SUPERIOR
REGLABIL

COD	222
Lungime / L	220
Inaltime / H	60
Latime / I	150



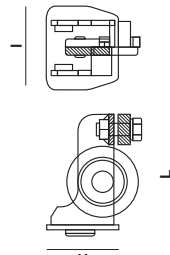
+ OPRITOR
CAPAT CURSA

COD	930
Lungime / L	104
Inaltime / H	89
Latime / I	97



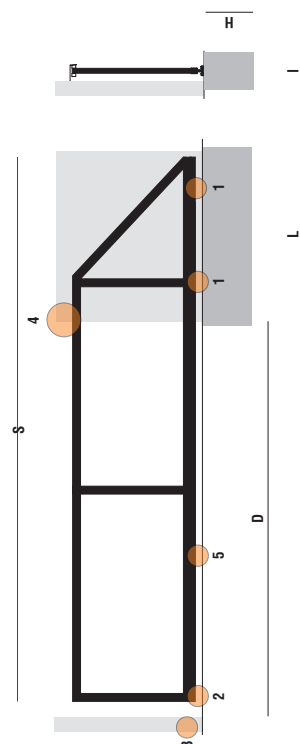
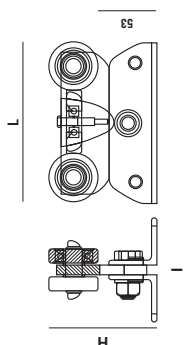
+ RULMENT
CAPAT SINA

COD	920
Lungime / L	97
Inaltime / H	76
Latime / I	70



+ SISTEM
ROLE

COD	910S
Lungime / L	170
Inaltime / H	113
Latime / I	100



LEGENDA

- L x H x I : Dimensiuni fundatie
D : Deschidere poarta
1 : Sistem cu 5 role transport
2 : Rulment capat sina
3 : Opritor capat cursa
4 : Ghidaj superior reglabil
5 : Sina zincata ranforsata

FUNDATIE (m)

D	S	Lungime (L)	Adancime (H)	Latime (I)
4	6	2.5	0.9	0.5
5	7.5	3	0.9	0.5