

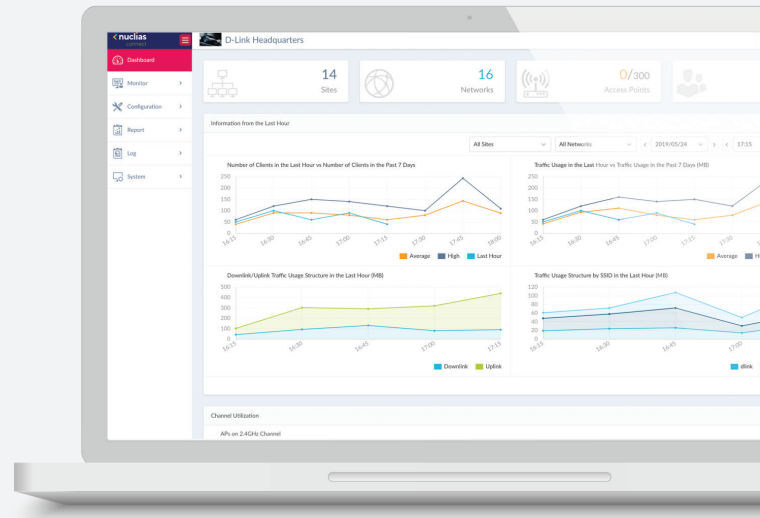
NUCLIAS CONNECT HUB

DNH-100



Nuclias Connect Overview

Welcome to Nuclias Connect, D-Link’s centralized management solution for Small-to-Medium-Sized Business (SMB) networks. Nuclias Connect makes it easier to analyze, automate, configure, optimize, scale, and secure your network – delivering the convenience of an Enterprise-wide management solution, at an SMB price.



▲ Intuitive Dashboard Interface

Solution Features

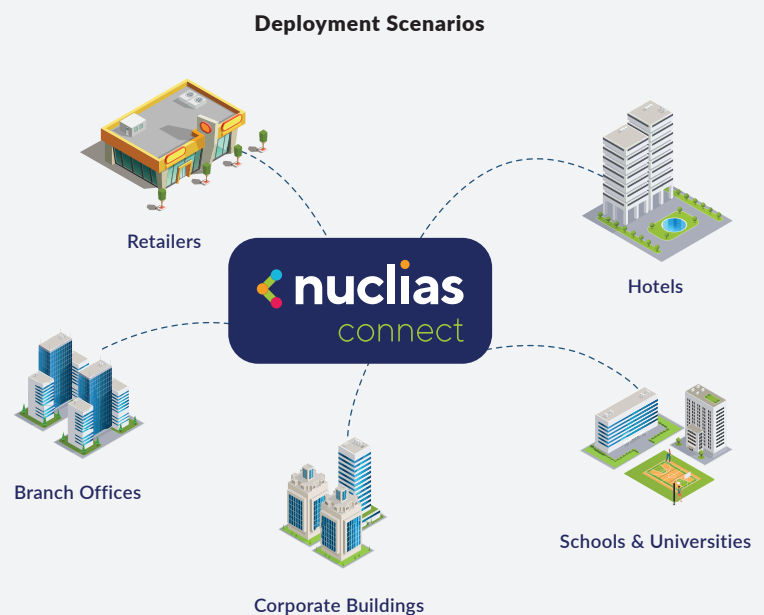
- » Free-to-Download Nuclias Connect Management Software
- » License-Free Access Points
- » Backwards-Compatibility
- » Intuitive Interface
- » Inexpensive Hardware Controller*
- » Traffic Reporting and Analytics
- » Remote Configuration and Batch Configuration.
- » Multi-Tenant and Role-Based Administration
- » Searchable and Auditable Event and Change Logs
- » 802.1x¹ and RADIUS Server, POP3, LDAP
- » Multilingual Support
- » Front-Desk Ticket Management
- » Authentication and Payment Gateway (Paypal) Integration via Customizable Captive Portal

Solution Benefits

1 / Network-Wide Management

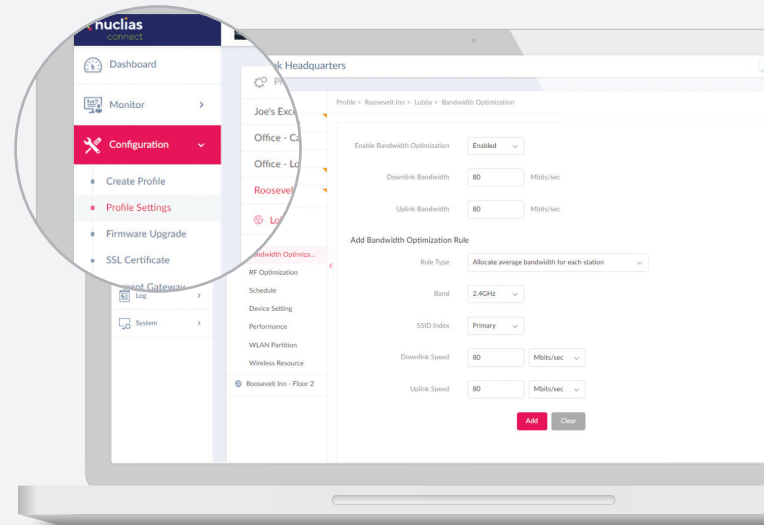
Free to download on Windows server (or Linux via Docker), the Nuclias Connect software currently supports numerous new and legacy D-Link Access Point (AP) models, and is capable of managing up to one thousand APs without the need for additional licensing charges. Coupled with a local lite management Smartphone app and an inexpensive optional hardware controller (The Hub*), Nuclias Connect is even suitable for remote locations where a dedicated PC or server might not be practical.

*Please contact your local D-Link office for availability



2 / Flexibility to Meet Your Needs

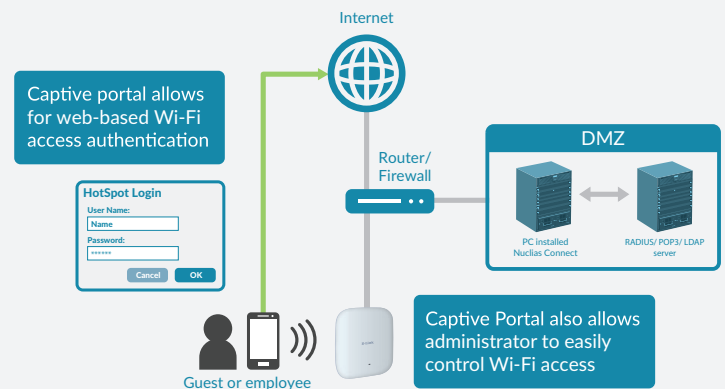
Through software-based monitoring and remote management of all wireless Access Points (APs) on your network, Nuclias Connect offers tremendous flexibility compared to traditional hardware-based management systems. Configuration can be done remotely and management software is customizable. Nuclias Connect enables control and analytics of a broad or fine granularity, presentable in a variety of formats. Additionally, admins can provide and manage a variety of distributed deployments, including the option to configure settings and customize admin accounts in a specific manner for each deployment. Nuclias Connect gives you the financial and technical flexibility to expand from a small network to a large one (up to 1,000 APs), while retaining a robust and centralized management system.



▲ Network-Wide Configuration

3 / Easy Administration

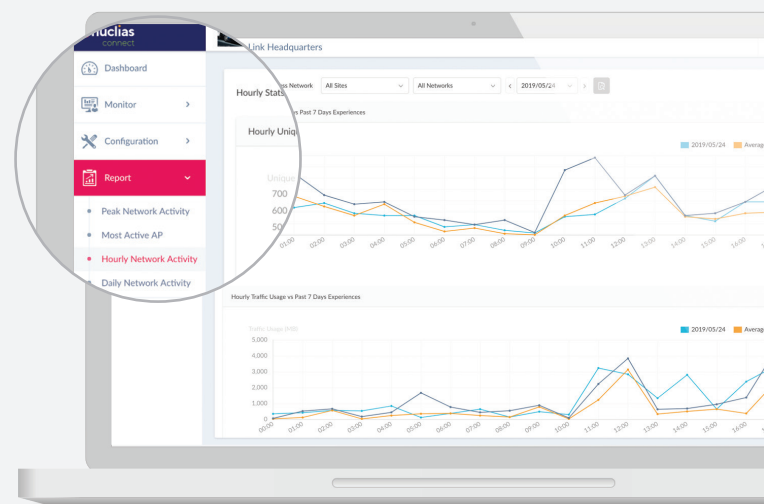
Nuclias Connect supports multi-tenancy, so network admins can grant localized management authority for local networks. In addition, because APs can support eight SSIDs per radio, administrators have the option of using one SSID to create a guest network for visitors. Nuclias Connect allows for multiple user authentications and also makes it possible to configure specific access controls for each SSID, giving admins the option of configuring separate internal networks for different subnets. This means that more advanced Value-Added Services, such as Captive Portal or Wi-Fi Hotspot, can be used to help manage wireless network traffic.



▲ Captive Portal with Customizable Login Page

4 / Insights at a Glance

Gain an extensive understanding of your network through usage analytics and status reports which can be viewed easily at a glance. Insights derived from traffic data can create business value. Traffic can be viewed across the entire network or to the level of a single AP.



▲ Statistics - Hourly Network Activity

5 / Network Security and Data Privacy

Nuclias Connect balances the need for access convenience with the need for security. All communications over the system are encrypted (WPA2/WPA3¹), with your user data never leaving your possession. Additional security measures (such as firewalls) can also be added to your network, with no unneeded technical difficulty.

Product Introduction

The DNH-100 Nuclias Connect Hub is a hardware controller with pre-loaded Nuclias Connect software. It is designed to support small-to-medium business or enterprise environments by providing network administrators the capability to manage D-Link DAP series access points through one single device. The Nuclias Connect Hub can currently manage up to one hundred APs per unit with the potential to extend to other Nuclias Connect products in future firmware updates.

Efficient Administration

- » Local and multi-site access point management
- » Reports system in place to administer and monitor wireless network
- » Single sign-on (SSO) portal supported to manage multiple controllers in one place
- » Accessible through downloadable app or standard web browser

Controller with Nuclias Connect

- » Powerful management, monitoring, and troubleshooting functionalities with Nuclias Connect
- » Flexible access through web (HTTPS), SSH, and Telnet
- » Direct connection with APs; no need for proxy device

Agile Scalability

- » Discover, manage, configure, and monitor up to 100 APs per controller
- » Cost-effective; no extra server needed for AP management
- » Simply add more controllers when you want to scale up your network

Versatile Installation

- » Rack-mountable
- » Small form-factor for easy placement
- » Integrated hardware controller and self-contained application server in one device

Technical Specifications

General		
Device Interfaces	1 x Gigabit LAN 1 x USB 3.0 (offers 5V / 1A power)	1 x MicroSD Slot 1 x RJ45 Console
Standards	IEEE 802.3u/ab	IEEE 802.3x Flow Control
Functionality		
Network Management	D-Link Nuclias Connect Telnet	Web (HTTPS) Secure Telnet (SSH)
LEDs	Power/status	LAN
Physical		
Dimensions	190 x 100 x 31 mm (7.48 x 3.94 x 1.22 in)	
Weight	529 g (1.16 lbs) without microSD card	
Power Supply	Internal power supply	
Maximum Power Consumption	6.5 W	
Temperature	Operating: 0 to 40 °C (32 to 104 °F)	Storage: -20 to 65 °C (-4 to 149 °F)
Humidity	Operating: 10% to 90% non-condensing	Storage: 5% to 95% non-condensing
Meantime Between Failure (MTBF)	> 30,000 hours	
Certifications	FCC CE	UL
Order Information		
Part Number	Description	
DNH-100	Nuclias Connect Hub	

¹ Will be supported in future versions.

Updated 11/28/19