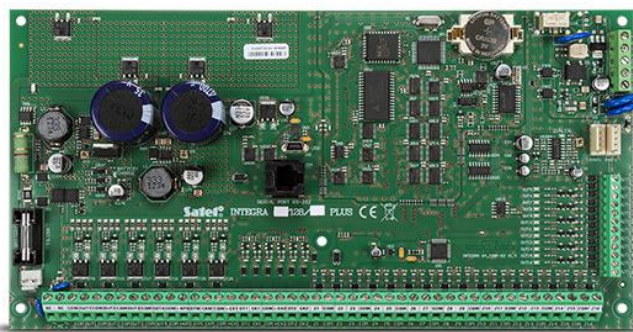


INTEGRA 128 Plus

EN50131 GRADE 3 COMPLIANT ALARM CONTROL PANEL MAIN BOARD, WITH 16 UP TO 128 ZONES AND OUTPUTS

Due to their full compliance with the requirements of EN50131 Grade 3, the **INTEGRA Plus** control units are perfectly fit for implementation of advanced security systems at locations with particularly high risk of burglary, such as banks, jewellery stores or public utility facilities. The control units are characterised by extended functionality, due to which they can be used for implementation of access control systems or even intelligent building solutions.

- full compliance with EN50131 series of standards for Grade 3 equipment
- built-in advanced 2 A+1.5 A power supply with extended autodiagnosics
- up to 128 zones with programmable EOL value and support for 3 EOL configuration
- USB port for programming via PC
- up to 32 partitions, 8 objects
- up to 128 fully programmable outputs
- dedicated buses for communication with keypads and expansion modules
- system operation via LCD keypads, partition keypads, remote control keyfobs or proximity cards
- remote system operation with PC, smartphone or voice-guided telephone menu
- 64 independent timers for automatic control
- access control and home automation features
- non-volatile event log with 22,527 entries, with on-line printing support
- support for 240+8+1 user codes
- firmware upgrades via PC
- option of not reporting possible problems with connecting to the SATEL server as a failure



TECHNICAL DATA

Voice messages	32
Low current programmable outputs rating	50 mA
High current programmable outputs rating	3000 mA
Event log	22527
Objects	8
Partitions	32
Timers	64
Board dimensions	264 x 134 mm
Operating temperature range	-10...+55 °C
Supply voltage (±15%)	20 V AC, 50-60 Hz
Weight	320 g
Maximum humidity	93±3%
Current consumption from battery - standby	130 mA
Recommended transformer type	75 VA
Battery failure voltage threshold (±10%)	11 V
Battery cut-off voltage (±10%)	10,5 V
Environmental class according to EN50130-5	II
Current consumption from the 230V network in standby	135 mA
Maximum current consumption from the 230V network	400 mA
Users + Administrators	240 + 8
Maximum current consumption from the battery	200 mA
Maximum battery charging current	1500 mA
Power supply current efficiency (supplying devices + charging batteries)	2000 + 1500 mA
Power supply output voltage	10,5...14 V DC
Carrying capacity of the +KPD output (±10%)	3000 mA
Carrying capacity of the +EX1 and +EX2 outputs (±10%)	3000 mA
Programmable wired inputs	16
Maximum number of programmable inputs	128
Programmable wired outputs	16
Maximum number of programmable outputs	128
Supplying outputs	3
Communication buses	1 + 2
Keypads	up to 8
Extender circuits	up to 64
Telephone numbers for notification (voice/PAGER + SMS)	16 + 16
Installer-defined text messaged	64
Security grade according to EN 50131	Grade 3