

Rack and pinion closer with link arm L190

Rack and pinion door closer with link arm

Product description

- Certified in compliance with EN 1154, size 3-6
- Rack and pinion closer with link arm L190
- Suitable for fire and smoke protection doors
- For single action doors up to 1400 mm wide

Overview of Advantages

- Can be used with concealed mounting plate, suitable for fire and smoke protection doors
- Can be used for left and right-handed doors
- Axis height adjustable up to 14 mm
- Closing speed, latching speed and backcheck adjustable via front facing regulating valves
- Thermodynamic valves for consistent performance
- Variable adjustable closing force
- Opening angle up to 180°
- Effective backcheck and latching speed range adjustable
- Accessories for established installation types
- Large range of applications
- Standard colours: silver EV1; white, similar to RAL9016; brown, similar to RAL8014; black, similar to RAL9005
- Customised finishes available on request

Characteristics for hold open link arm L191

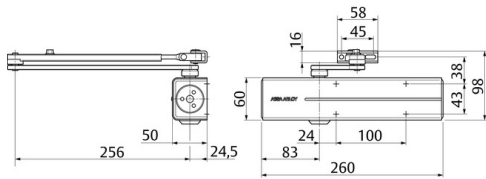
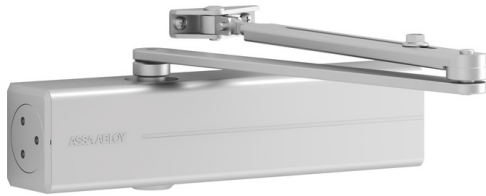
- Hold-open angle adjustable up to 150°
- Hold-open mode can be enabled and disabled as required
- Same installation as link arm
- Cannot be used with fire and smoke protection doors

Accessories/Individual parts

- Link arm L190Silver EV1 (Order number: DCL190-----EV1-)
- Hold-open link arm L191Silver EV1 (Order number: DCL191-----EV1-)
- Mounting plate A120For Door Closer Models DC200/DC300/DC500/DC700, galvanised (Order number: DCA120-----40)
- Mounting plate A121For Door Closer Model DC300 Tandem, silver EV1 (Order number: DCA121-----EV1-)
- Angle bracket A123For Door Closer Model DC300, silver EV1 (Order number: DCA123-----EV1-)
- Parallel arm bracket A154For link arm, silver EV1 (Order number: DCA154-----EV1-)
- Mounting plate A168For link arm, silver EV1 (Order number: DCA168-----EV1-)
- Glass door shoe A165For DC300, silver EV1 (Order number: DCA165-----EV1-)

The advantages at a glance

Customer segment	Advantages
User	No reworking of door element for upgrade to tandem Largely unaffected by temperature fluctuations because of thermodynamic valves Easier door opening and improved accessibility due to rapidly decreasing torque Backcheck feature offers optimum protection for doors and walls
Trade	Reduced inventory costs due to modular product range Reduced inventory costs due to modular product range One single product suitable for a large variety of mounting positions Complementary accessories available for the whole product range
Builders	One drilling template overall Standard door closers DC300 can be used with tandem mounting plates Quick and easy installation Quickly and easily adjustable Suitable for left and right handed doors, in both door and frame mounted applications Easily retrofitted with minimal rework One drilling template overall Adjustable to nearly all door and frame types Quick and easy installation Quickly and easily adjustable Suitable for left and right handed doors, in both door and frame mounted applications
Project planners	Extensive range of uses, also for extra large and heavy doors Extensive range of uses: Fire and smoke protection doors as well as standard doors Modern design Compact design Fulfils barrier-free building requirements Same dimensions and design with and without mounting plate Comprehensive functions, standard



DC300

Rack and pinion closer with link arm L190

and optional

Technical data

Closing force	EN 3-6
Door width up to	1400 mm
Suitable for fire doors	Yes
DIN direction	Left / right handed
Closing speed	Variable between 180°-15°
Latching speed	Variable between 15°-0°
Backcheck effect	Variable above 75°
Delayed closing	No
Hold-open mode (with hold-open link arm L191)	Adjustable 75°-150°, can be enabled and disabled
CE marking for building products	Yes
Certified in compliance with	EN 1154
Length	260 mm
Height	60 mm
Depth	50 mm
Weight	1.9 kg
Color	Silver EV1
Article number	DC300-----DEV1-
EAN	4042203687103