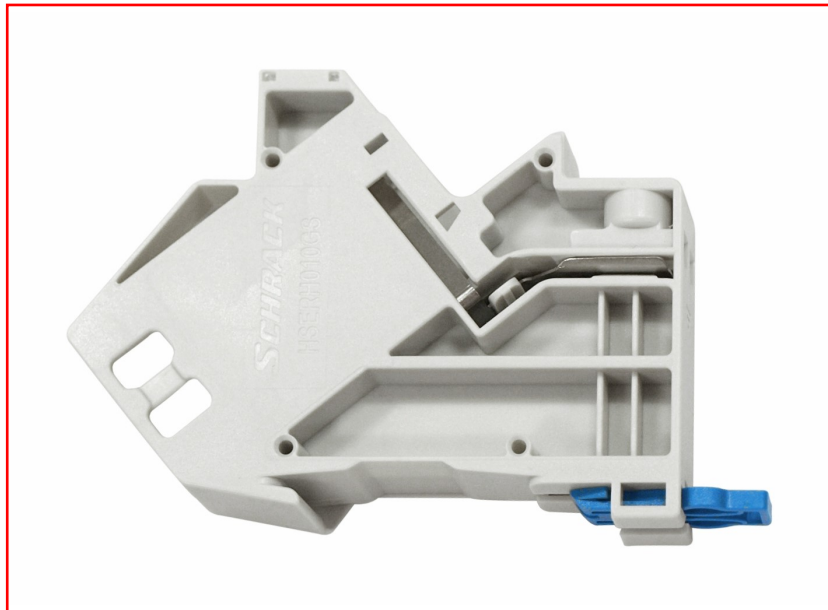


DATA SHEET:
DIN-rail adapter empty for one module (SFA)(SFB)



SCHRACK-INFO

The DIN-rail adapter is suitable for installation of all SCHRACK modules in Schrack Format A (SFA) and Schrack Format B (SFB).

The adapter comes in color RAL7035 (lightgrey). The width equals to one unit (ca. 17.5mm). Shielded RJ45 modules are connected to the potential equalisation clamps during click-in via a spring-type contact. Labelling is possible by a paper behind a window. Each DIN-rail adapter comes with a side-cover. This cover is used as a protection against contact on the most-left and most-right adapter in a row.

- Formats: SFA & SFB
- Color: RAL 7035 light grey
- Labeling field

DIMENSIONS

- 90x 18 x 65mm

PACKAGING INFORMATION

- Single piece in polypack
- Weight: 0,04kg

| DESCRIPTION | ORDER NO. |
|--|------------|
| DIN-rail adapter empty for one module (SFA)(SFB) | HSERH010GS |