

**Physical Specifications**

Part Number: GEL TED12100 - TED004147  
 Length: 330 ± 3 mm (12.99 inches)  
 Width: 173 ± 3 mm (6.81 inches)  
 Container height: 220 ± 3 mm (8.66 inches)  
 Weight: ± 2% 29 kg  
 Height: 212 ± 3 mm (8.35 inches)

Standard case material is flame retardant to (UL94) HBO. The TED Batteries range provide an extremely reliable and versatile valve regulated lead acid battery. Their unique construction and sealing techniques ensures that no electrolyte leakage can occur, and provides safe and effective operation in any orientation, and meets all requirements of the International Air Transport Association Dangerous Goods Regulations to allow transportation by air.



**Specifications**

Terminal Type: Standard M8 (F11/T11) or any suitable terminal (at customer request)

Design Floating Life 20°C (68°F): 12 Years

Maxim Discharge Current: 900A/5sec.

Internal Resistance: Approximative 5mΩ

Cycle Use: Initial Charging Current Less Than 30.0A • Voltage 14.4+14.8 at 25°C (77°F) • Temperature Coefficient -30mV/°C  
 Standby Use: No Limit on Initial Charging Current Voltage 13.5+13.8V at 25°C (77°F) • Temperature Coefficient -20mV/°C  
 Capacity Affected by Temperature 40°C (104°F) 103% 25°C (77°F) 100% 0°C (32°F) 86%

Self Discharge: TED Batteries may be stored for up to 6 months at 25°C (77°F) and than refresh charge is required. For higher temperatures the time interval will be shorter.

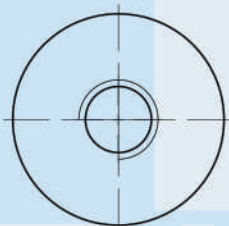
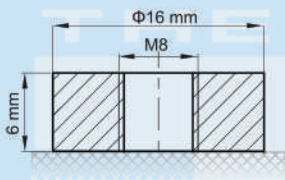
**Rated Capacity**

100Ah	20hr	1.80V/cell 25°C/77°F
98 Ah	10hr	1.80V/cell 25°C/77°F
85 Ah	5hr	1.75V/cell 25°C/77°F
73 Ah	3hr	1.75V/cell 25°C/77°F
55 Ah	1hr	1.60V/cell 25°C/77°F

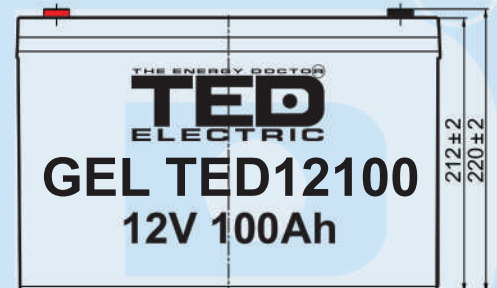
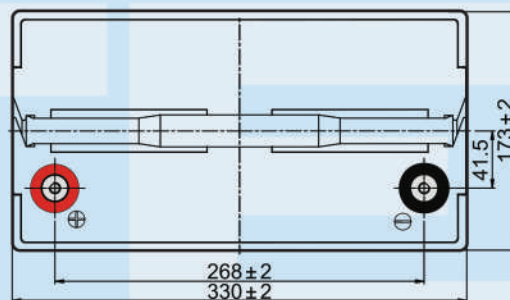
**Discharge Characteristics**

<b>Operating Temperature Range</b>
Charge: 0°C+40°C (5°F+104°F)
Storage: -15°C+40°C (5°F+104°F)
Nominal: 25°C+3°C (77°F±5°F)
Discharge: -15°C+50°C (5°F+122°F)

**Terminal Type:**  
 Standard M8 (F11/T11)



**GEL SERIES**



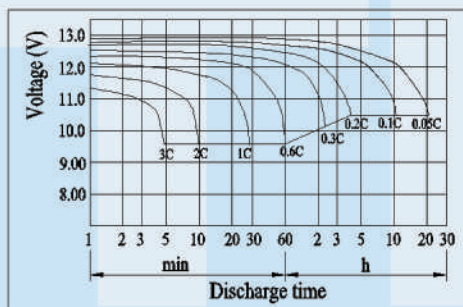
**Constant Current Discharge (Amperes) at 25°C**

F.V/TIME	10min	15min	30min	60min	2h	3h	4h	5h	8h	10h	20h
9.60V	187	154	93.1	57.6	35.4	25.2	19.8	16.8	11.9	9.87	5.23
9.90V	182	150	91.3	56.8	35.2	25.1	19.7	16.7	11.8	9.86	5.22
10.2V	174	144	88.5	55.3	34.9	24.9	19.5	16.6	11.7	9.83	5.21
10.5V	167	140	86.3	53.6	34.4	24.7	19.4	16.5	11.6	9.77	5.18
10.8V	157	132	83.2	51.9	33.5	24.2	18.8	16.0	11.3	9.70	5.14

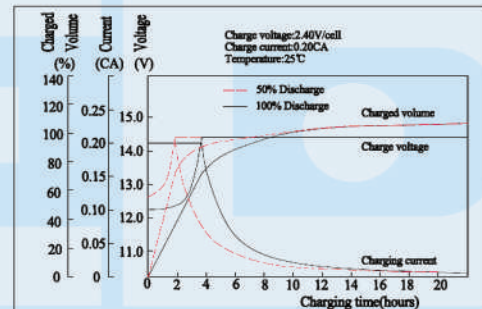
**Constant Power Discharge (Watts) at 25°C**

F.V/TIME	10min	15min	30min	60min	2h	3h	4h	5h	8h	10h	20h
9.60V	2022	1687	1045	657	410	297	233	199	141	118	62.8
9.90V	1962	1647	1024	647	408	295	231	198	140	118	62.7
10.2V	1881	1586	993	631	404	293	230	196	139	117	62.5
10.5V	1800	1532	969	611	398	291	228	195	138	117	62.1
10.8V	1699	1451	933	591	388	285	221	189	134	116	61.7

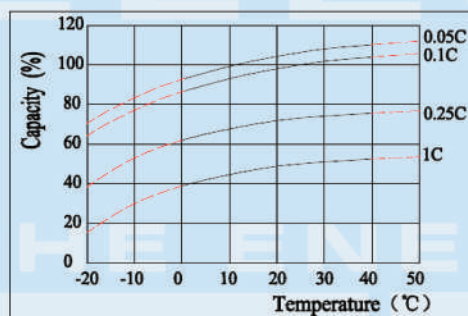
**Discharge Characteristics**



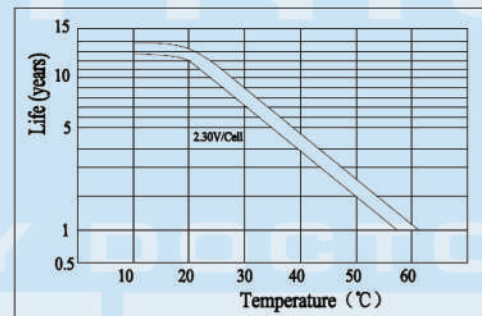
**Float Charging Characteristics**



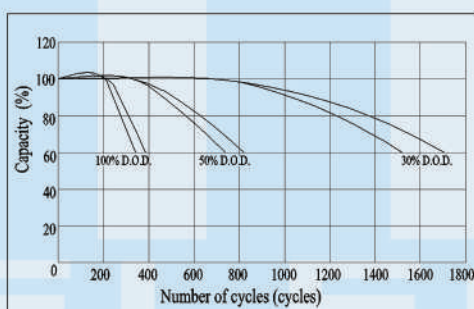
**Temperature Effects in Relation to Battery Capacity**



**Effect of Temperature on Long Term Float Life**



**Cycle Life in Relation to Depth of Discharge**



**Self Discharge Characteristics**

