

01511467

# 中国国际贸易促进委员会



China Council for the Promotion of International Trade  
China Chamber of International Commerce

## 证明书 CERTIFICATE



号码 No.

233705B0/001435



兹证明：在所附文件上的东营大海科林光电有限公司的印章属实。

THIS IS TO CERTIFY THAT: the seal of DONGYING DAHAI KELIN SOLAR POWER CO., LTD on the annexed DOCUMENT is genuine.



China Council for the Promotion of International Trade



张琳琳

授权签字:

Authorized Signature: ZHANGLINLIN

日期: 2023年11月09日  
(Date: Nov. 09, 2023)

证明书查询网址 Website for verifying the certificate: <http://www.rzccpit.com/validate.html>



## EU Declaration of Conformity

**Company:** DONGYING DAHAI KELIN SOLAR POWER CO., LTD

**Manufacturer:** Declare under our sole responsibility that the following product

**Brand:** DAHAI

**Type of product:** PV Module

**Model:**

**Mono-crystalline module:**

1500VDC module types

DHM72T31-XXX/MR (XXX=535-555, in step of 5)

DHM54T31-XXX/TP(XXX=410-435, in step of 5)

DHM60T31-XXX/TP(XXX=455-485, in step of 5)

DHM72T31-XXX/TP(XXX=555-585, in step of 5)

DHM54T35-XXX/TP(XXX=410-435, in step of 5)

DHM60T35-XXX/TP(XXX=455-485, in step of 5)

DHM72T35-XXX/TP(XXX=555-585, in step of 5)

DHM66T31-XXX/MR(XXX=490-510, in step of 5)

DHM66T31-XXX/TP(XXX=510-535, in step of 5)

DHM66T35-XXX/MR(XXX=490-510, in step of 5)

DHM66T35-XXX/TP(XXX=510-535, in step of 5)

XXX is standing for rated output power at STC

Technical specification of product:

Meets the essentials requirements of the following EU-Directives:

Council Directives on the harmonization of laws of Member States relating to

the use of Electrical equipment within specific voltage limits (Low Voltage directive 2014/35/EU

Including amendments)

applied harmonized standards:

EN IEC 61730-1:2018

EN IEC 61730-1:2018/AC:2018-06

EN IEC 61730-2:2018

EN IEC 61730-2:2018/AC:2018-06

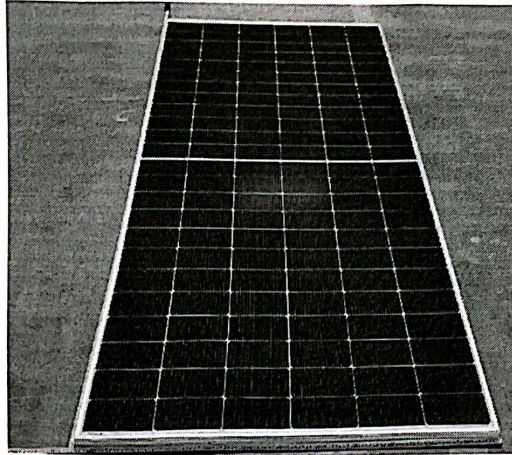
Hongyan Zhu

Address: Yankou Village, Daozhuang Town, Guangrao County, Dongying  
City, Shandong Province

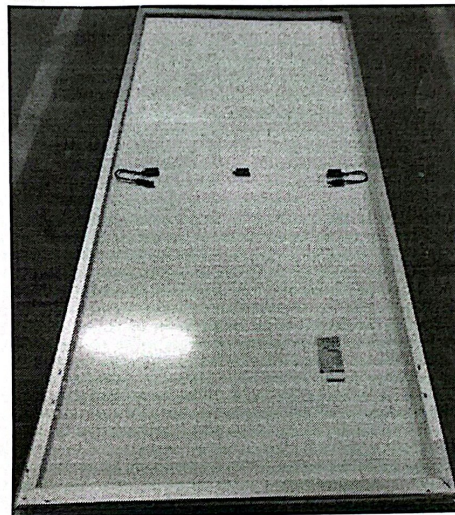




Photo of product:



Front side

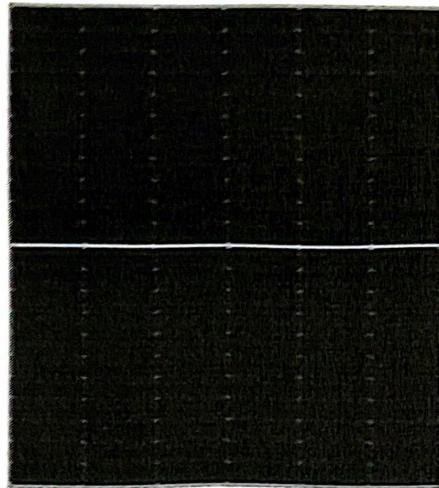


Back side

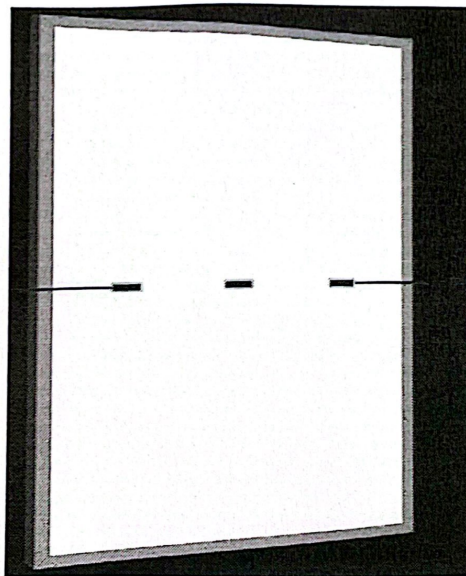
The above photos are for DHM72T31-560/TP (XXX=555-585, in step of 5)  
and the differences of  
DHM72T31-XXX/MR (XXX=535-555, in step of 5)  
DHM54T31-XXX/TP(XXX=410-435, in step of 5)  
DHM60T31-XXX/TP(XXX=455-485, in step of 5)  
DHM54T35-XXX/TP(XXX=410-435, in step of 5)  
DHM60T35-XXX/TP(XXX=455-485, in step of 5)  
DHM72T35-XXX/TP(XXX=555-585, in step of 5)  
modules are cells quantities and dimensions

ELIN SOLAR  
大海科林  
有限公司  
\*





Front side



Back side



The above photos are for DHM66T31-XXX/MR(XXX=490-510, in step of 5)  
and the differences of

DHM66T31-XXX/MR(XXX=490-510, in step of 5)

DHM66T31-XXX/TP(XXX=510-535, in step of 5)

DHM66T35-XXX/MR(XXX=490-510, in step of 5)

DHM66T35-XXX/TP(XXX=510-535, in step of 5)

modules are cells quantities and dimensions

